

Converting Colors

YIQ(55.2870, 27.2330, 7.5610)

Have a look what the booklet for
YIQ(55.2870, 27.2330, 7.5610)
contains.

YIQ(55.2870, 27.2330, 7.5610)	3
<i>Conversions</i>	4
<i>Details</i>	6
<i>Harmonies</i>	12
<i>Previews</i>	24
<i>Color Blindness Simulation</i>	28
<i>CSS Examples</i>	31

Color

**YIQ(55.2870, 27.2330,
7.5610)**

Conversions

Conversions Part 1

Format	Color
Hex	562B26
RGB	86, 43, 38
RGB Percent	34%, 17%, 15%
CMY	0.6626, 0.8314, 0.8509
CMYK	0.00, 0.50, 0.56, 0.66
HSL	6°, 39%, 24%
HSV	6°, 56%, 34%
XYZ	5.0536, 3.8462, 2.3122
YIQ	55.2870, 27.2330, 7.5610

Conversions

Conversions Part 2

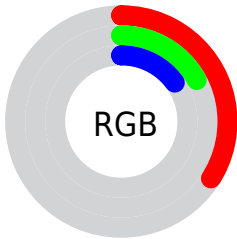
Format	Color
RYB	86, 44, 38
Decimal	5647142
CIELab	23.16, 19.24, 12.13
CIELCh	23, 22.741, 32.227
Yxy	3.8462, 0.4507, 0.3430
Android (android.graphics.Color)	4283837222 (0xFF562B26)
YUV	55.2870, -8.5225, 26.9353
Hunter-Lab	19.6117, 11.6759, 6.7381

Details

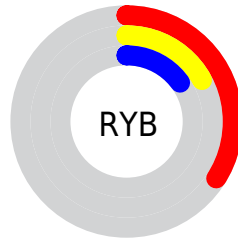
The YIQ color **55.2870, 27.2330, 7.5610** is a dark color, and the websafe version is hex **663333**. A complement of this color would be **68.7130, -27.2330, -7.5610**, and the grayscale version is **55.0000, 0.0000, 0.0000**.

A 20% lighter version of the original color is **102.9670, 31.1300, 8.5220**, and **11.6610, 23.2440, 8.2680** is the 20% darker color. If you saturate the color by 10%, you get **49.5650, 32.3220, 8.9460**, and if you desaturate by 10%, it is **61.0090, 22.1440, 6.1760**.

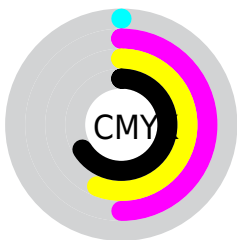
Distribution



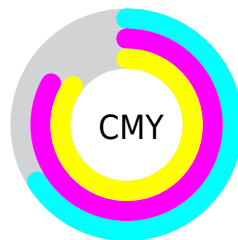
- Red (34%)
- Green (17%)
- Blue (15%)



- Red (34%)
- Yellow (17%)
- Blue (15%)



- Cyan (0%)
- Magenta (50%)
- Yellow (56%)
- Black (66%)



- Cyan (66%)
- Magenta (83%)
- Yellow (85%)

Brightness & Saturation Gradients

These gradients show how the YIQ color 55.2870, 27.2330, 7.5610 changes by changing the brightness by 10 percent. The first figure shows a shift by +10% for each color and the second figure -10%.

Similar to the brightness gradients but the following saturation gradients show a change of the YIQ color 55.2870, 27.2330, 7.5610 by changing the saturation by 10% instead.

■ 55.2870, 27.2330,
7.5610

■ 55.2870, 27.2330,
7.5610

■ 255.0000, -0.0000,
-0.0000

■ 32.6180, 24.8030,
7.5470

■ 102.9670, 31.1300,
8.5220

■ 11.6610, 23.2440,
8.2680

■ 128.4510, 32.6430,
8.6350

■ 0.0000, 0.0000,
0.0000

■ 154.9350, 34.1560,
8.7480

■ 181.8320, 35.9440,
9.3840

■ 210.0170, 36.8610,
9.2850

■ 230.8410, 22.5570,

4.1970

■ 250.4690, 5.8690,
-1.7390

■ 55.2870, 27.2330,
7.5610

■ 55.2870, 27.2330,
7.5610

■ 49.5650, 32.3220,
8.9460

■ 61.0090, 22.1440,
6.1760

■ 44.5440, 36.8150,
10.1190

■ 66.0300, 17.6510,
5.0030

■ 38.8220, 41.9040,
11.5040

■ 71.7520, 12.5620,
3.6180

■ 33.2140, 46.6720,
13.2000

■ 77.3600, 7.7940,
1.9220

■ 30.9970, 48.7810,
13.5250

■ 83.0820, 2.7050,
0.5370

■ 88.2170, -2.1090,
-0.3250

■ 93.8250, -6.8770,
-2.0210

■ 99.5470, -11.9660,
-3.4060

■ 104.5680,
-16.4590, -4.5790

Harmonies

Analogous

The Analogous color harmony consists of three colors that are next to each other on the color wheel.



56.0510, 22.3260, 13.8940



55.2870, 27.2330, 7.5610



54.9350, 24.9880, -1.3160

Triad

The Triadic color harmony groups three colors that are evenly spaced from another and form a triangle on the color wheel.



55.2870, 27.2330, 7.5610



48.6030, -15.5400, -15.7320



51.9770, -27.5560, 3.8040

Complementary

The Complementary color scheme is a pair of colors which are on the opposite of each other on the color wheel.



55.2870, 27.2330, 7.5610



68.7130, -27.2330, -7.5610

Split Complementary

Split-complementary colors differ from the complementary color scheme. The scheme consists of three colors, the original color and two neighbors of the complement color.



45.4970, -44.0600, -5.4680



55.2870, 27.2330, 7.5610



43.9520, -35.5760, -16.0560

Square

The Square scheme is like the rectangle color scheme, but the four colors are evenly spaced on the color wheel.



55.2870, 27.2330, 7.5610



52.1230, 3.4870, -13.6410



45.3030, -40.7580, -10.2460



56.2680, -6.1460, 12.2700

Rectangle

The Rectangle color scheme consists of four colors that form a rectangle on the color wheel.



55.2870, 27.2330, 7.5610



54.1360, 19.8080, -6.5600



45.3030, -40.7580, -10.2460



47.4810, -37.9630, -0.3230

Sweetspot

The Sweet Spot groups the original color and five complimentary colors.



55.2870, 27.2330, 7.5610



99.8550, 10.7740, 2.9820



57.2540, 14.8050, 23.5490



48.8760, 6.2810, 1.8090



184.0000, 0.0000, -0.0000



56.0000, -0.0000, 0.0000

Same Dimension

The Same Dimension uses a secret algorithm to generate beautiful new colors.



55.2870, 27.2330, 7.5610



64.1210, 42.5000, 11.7160



69.3750, 20.6330, -4.9910



40.1960, 2.3840, 0.8480



38.4500, 60.7470, 16.9310



84.3530, 133.4600, 37.2680

Inverse Universe

The Inverse Universe completely reimagines the original color for something new.



68.7130, -27.2330, -7.5610



84.8790, -42.5000, -11.7160



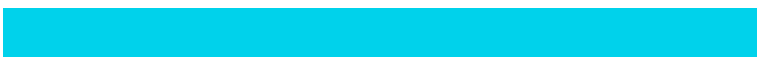
54.6250, -20.6330, 4.9910



41.8040, -2.3840, -0.8480



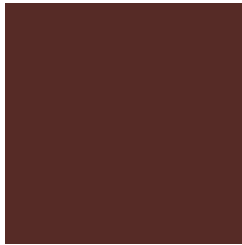
68.5500, -60.7470, -16.9310



150.0600, -133.1850, -36.7450

Previews

White Background



This preview shows how the YIQ color 55.2870, 27.2330, 7.5610 looks on a white background.

Color Contrast Check

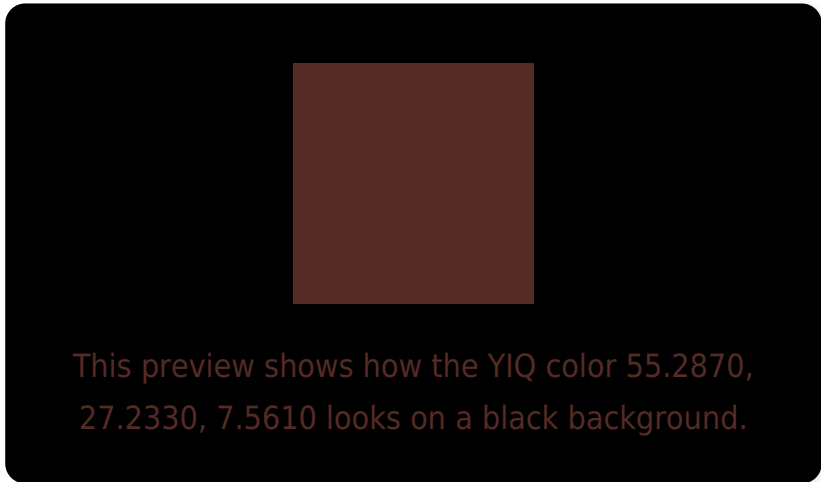
Large Text (above 18pt) WCAG AA ✓ Pass

Any Text WCAG AA ✓ Pass

Large Text (above 18pt) WCAG AAA ✓ Pass

Any Text WCAG AAA ✓ Pass

Black Background



Color Contrast Check

Large Text (above 18pt) WCAG AA × Fail

Any Text WCAG AA × Fail

Large Text (above 18pt) WCAG AAA × Fail

Any Text WCAG AAA × Fail

If you want to check with other color combinations, try the [Color Contrast Checker](#).

YIQ 55.2870, 27.2330, 7.5610

Background



This preview shows how black text looks on a background with the YIQ color 55.2870, 27.2330, 7.5610.

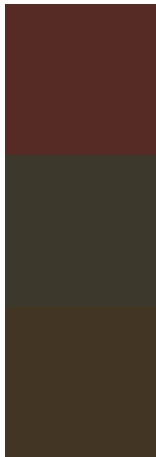


This preview shows how white text looks on a background with the YIQ color 55.2870, 27.2330,

Color Blindness Simulation

Color vision deficiency is a very complex topic, and I could not describe the different causes any better than Wikipedia does, so if you want to learn more, you should check out their [article about color blindness](#).

Dichromacy



Original Color

55.2870, 27.2330, 7.5610

Protanopia

55.8280, 6.2360, -2.8840

Deuteranopia

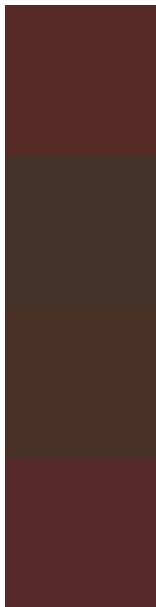
55.2480, 13.8010, -2.3190



Tritanopia

55.4980, 25.2610, 10.2610

Trichromacy



Original Color

55.2870, 27.2330, 7.5610

Protanomaly

55.3560, 13.6170, 1.0170

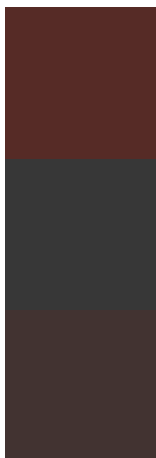
Deuteranomaly

55.1070, 18.7520, 1.5680

Tritanomaly

55.1560, 26.2240, 9.3280

Monochromacy



Original Color

55.2870, 27.2330, 7.5610

Achromatopsia

55.0000, 0.0000, 0.0000

Achromatomaly

55.2570, 9.5820, 2.5580

CSS Examples

Text

The CSS property to change the color of the text to YIQ 55.2870, 27.2330, 7.5610 is called "color". The color property can be set on classes, ids or directly on the HTML element.

This example shows how text in the color `rgb(86, 43, 38)` looks like.

```
.text, #text, p{  
    color:rgb(86, 43, 38)  
}
```

If you want to add a text shadow in that color use the text-shadow property, you can generate a text shadow directly with our [CSS Text Shadow Generator](#).

Here you see how black text with a 4 pixel rgb(86, 43, 38) colored shadow looks like.

```
.shadow{ text-shadow: 4px 4px 2px rgb(86, 43, 38) }
```

Border

The CSS property to change the border of an element to YIQ 55.2870, 27.2330, 7.5610 is called "border". The border property can be set on classes, ids or directly on the HTML element.

This example shows the color as border, it can be applied via the CSS property "border" or "border-color".

```
.border, #border, table{ border:4px solid rgb(86, 43, 38) }
```


If only the border color should be changed use the property border-color.

```
.border{ border-color:rgb(86, 43, 38) }
```

If you want to add a box shadow in that color use:

Here you see how a box with a 4 pixel rgb(86, 43, 38) colored shadow looks like.

```
.boxshadow{ -moz-box-shadow:4px 4px 4px  
4px rgb(86, 43, 38); -webkit-box-  
shadow:4px 4px 4px 4px rgb(86, 43, 38);  
box-shadow:4px 4px 4px 4px rgb(86, 43, 38)  
}
```

Background

The CSS property to change the background color of an element to YIQ 55.2870, 27.2330, 7.5610 is called "background". The background property can be set on classes, ids or directly on the HTML element.

```
.background, #background, body{  
background: rgb(86, 43, 38) }
```

If only the background color should be changed can be used:

```
.background{ background-color: rgb(86, 43,  
38) }
```

This example shows the color as background, it is applied via the CSS property "background".

To optimize and compress your CSS code, you can use our [online CSS compressor and optimizer](#) based on csstidy. If you want to create a linear or radial gradient as background or border, check our [CSS Gradient Generator](#).

Hey! You found this booklet interesting? Support Converting Colors with the new Membership Option!

The pro membership hides all ads, plus gives you double the colors in the color bucket, and more awesome pro features!

[Learn more, Memberships starting at \\$2.50/m!](#)

**Follow me
on Twitter!**

@ConvertingColor