

Converting Colors

YIQ(55.7260, 15.4510, 0.8190)

Have a look what the booklet for
YIQ(55.7260, 15.4510, 0.8190)
contains.

YIQ(55.7260, 15.4510, 0.8190)	3
<i>Conversions</i>	4
<i>Details</i>	6
<i>Harmonies</i>	12
<i>Previews</i>	24
<i>Color Blindness Simulation</i>	28
<i>CSS Examples</i>	31

Color

**YIQ(55.7260, 15.4510,
0.8190)**

Conversions

Conversions Part 1

Format	Color
Hex	473328
RGB	71, 51, 40
RGB Percent	28%, 20%, 16%
CMY	0.7215, 0.8000, 0.8431
CMYK	0.00, 0.28, 0.44, 0.72
HSL	21°, 28%, 22%
HSV	21°, 44%, 28%
XYZ	4.1661, 3.8602, 2.5346
YIQ	55.7260, 15.4510, 0.8190

Conversions

Conversions Part 2

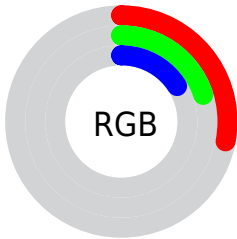
Format	Color
R_{YB}	71, 57, 40
Decimal	4666152
CIE Lab	23.20, 7.31, 10.49
CIE LCh	23, 12.783, 55.123
Yxy	3.8602, 0.3945, 0.3655
Android (android.graphics.Color)	4282856232 (0xFF473328)
YUV	55.7260, -7.7529, 13.3953
Hunter-Lab	19.6475, 3.4662, 6.1046

Details

The YIQ color **55.7260, 15.4510, 0.8190** is a dark color, and the websafe version is hex **333333**. A complement of this color would be **55.2740, -15.4510, -0.8190**, and the grayscale version is **56.0000, -0.0000, 0.0000**.

A 20% lighter version of the original color is **102.5090, 17.5600, 1.1440**, and **11.0080, 14.7170, 3.1090** is the 20% darker color. If you saturate the color by 10%, you get **51.9930, 19.0730, 1.2570**, and if you desaturate by 10%, it is **59.4590, 11.8290, 0.3810**.

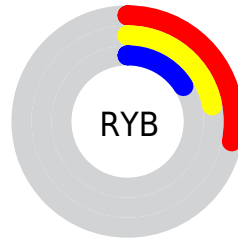
Distribution



Red (28%)

Green (20%)

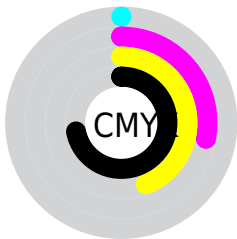
Blue (16%)



Red (28%)

Yellow (22%)

Blue (16%)

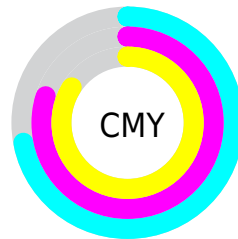


Cyan (0%)

Magenta (28%)

Yellow (44%)

Black (72%)



Cyan (72%)

Magenta (80%)

Yellow (84%)

Brightness & Saturation Gradients

These gradients show how the YIQ color 55.7260, 15.4510, 0.8190 changes by changing the brightness by 10 percent. The first figure shows a shift by +10% for each color and the second figure -10%.

Similar to the brightness gradients but the following saturation gradients show a change of the YIQ color 55.7260, 15.4510, 0.8190 by changing the saturation by 10% instead.

■ 55.7260, 15.4510,
0.8190

■ 55.7260, 15.4510,
0.8190

255.0000, -0.0000,
-0.0000

■ 34.2420, 13.9380,
0.7060

■ 102.5090, 17.5600,
1.1440

■ 11.0080, 14.7170,
3.1090

■ 127.6940, 18.4770,
1.0450

■ 0.0000, 0.0000,
0.0000

■ 153.9930, 19.0730,
1.2570

■ 181.1780, 19.9900,
1.1580

■ 208.4770, 20.5860,
1.3700

■ 235.8790, 19.3940,

0.9460

■ 253.7460, 3.5310,
-3.4210

■ 55.7260, 15.4510,
0.8190

■ 55.7260, 15.4510,
0.8190

■ 51.9930, 19.0730,
1.2570

■ 59.4590, 11.8290,
0.3810

■ 48.8470, 22.4200,
1.1720

■ 62.6050, 8.4820,
0.4660

■ 45.1140, 26.0420,
1.6100

■ 66.3380, 4.8600,
0.0280

■ 41.9680, 29.3890,
1.5250

■ 69.4840, 1.5130,
0.1130

■ 38.2350, 33.0110,
1.9630

■ 73.3310, -2.4300,
-0.0140

■ 35.9040, 35.4410,
1.9770

■ 77.0640, -6.0520,
-0.4520

■ 80.2100, -9.3990,
-0.3670

■ 83.9430, -13.0210,
-0.8050

■ 87.0890, -16.3680,
-0.7200

Harmonies

Analogous

The Analogous color harmony consists of three colors that are next to each other on the color wheel.



56.3610, 15.2210, 4.9890



55.7260, 15.4510, 0.8190



54.9380, 11.7380, -3.4780

Triad

The Triadic color harmony groups three colors that are evenly spaced from another and form a triangle on the color wheel.



55.7260, 15.4510, 0.8190



51.4170, -14.7160, -8.6360



55.8780, -5.2280, 6.6440

Complementary

The Complementary color scheme is a pair of colors which are on the opposite of each other on the color wheel.



55.7260, 15.4510, 0.8190



55.2740, -15.4510, -0.8190

Split Complementary

Split-complementary colors differ from the complementary color scheme. The scheme consists of three colors, the original color and two neighbors of the complement color.



54.1540, -14.9930, 1.8950



55.7260, 15.4510, 0.8190



50.1760, -21.2270, -6.2750

Square

The Square scheme is like the rectangle color scheme, but the four colors are evenly spaced on the color wheel.



55.7260, 15.4510, 0.8190



52.5060, -4.7210, -8.0570



51.3980, -21.7320, -2.6280



56.6080, 4.4000, 8.3680

Rectangle

The Rectangle color scheme consists of four colors that form a rectangle on the color wheel.



55.7260, 15.4510, 0.8190



54.1330, 6.6950, -5.6970



51.3980, -21.7320, -2.6280



55.6710, -9.0790, 4.8490

Sweetspot

The Sweet Spot groups the original color and five complimentary colors.



55.7260, 15.4510, 0.8190



85.9360, 6.0520, 0.4520



51.5490, 12.0560, 12.7920



42.2670, 3.6220, 0.4380



173.0000, -0.0000, 0.0000



46.0000, 0.0000, -0.0000

Same Dimension

The Same Dimension uses a secret algorithm to generate beautiful new colors.



55.7260, 15.4510, 0.8190



68.3310, 23.9330, 1.2850



64.5310, 11.3260, -7.0260



33.7830, 2.1090, 0.3250



50.1460, 49.3790, 2.6830



114.8330, 113.2920, 6.2840

Inverse Universe

The Inverse Universe completely reimagines the original color for something new.



55.2740, -15.4510, -0.8190



67.6690, -23.9330, -1.2850



46.4690, -11.3260, 7.0260



33.6300, -1.8340, 0.1980



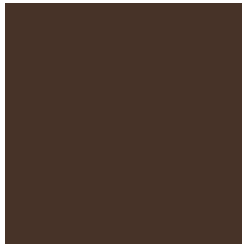
48.8540, -49.3790, -2.6830



112.1670, -113.2920, -6.2840

Previews

White Background



This preview shows how the YIQ color 55.7260, 15.4510, 0.8190 looks on a white background.

Color Contrast Check

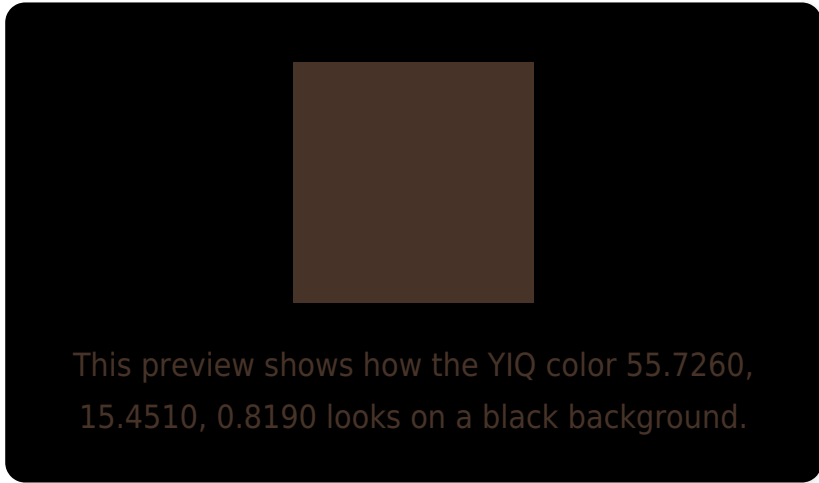
Large Text (above 18pt) WCAG AA ✓ Pass

Any Text WCAG AA ✓ Pass

Large Text (above 18pt) WCAG AAA ✓ Pass

Any Text WCAG AAA ✓ Pass

Black Background



Color Contrast Check

Large Text (above 18pt) WCAG AA × Fail

Any Text WCAG AA × Fail

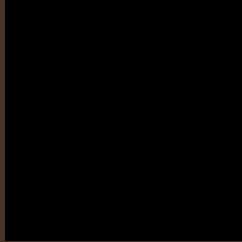
Large Text (above 18pt) WCAG AAA × Fail

Any Text WCAG AAA × Fail

If you want to check with other color combinations, try the [Color Contrast Checker](#).

YIQ 55.7260, 15.4510, 0.8190

Background



This preview shows how black text looks on a background with the YIQ color 55.7260, 15.4510, 0.8190.



This preview shows how white text looks on a background with the YIQ color 55.7260, 15.4510,

Color Blindness Simulation

Color vision deficiency is a very complex topic, and I could not describe the different causes any better than Wikipedia does, so if you want to learn more, you should check out their [article about color blindness](#).

Dichromacy



Original Color

55.7260, 15.4510, 0.8190

Protanopia

54.7140, 6.5570, -3.1950

Deuteranopia

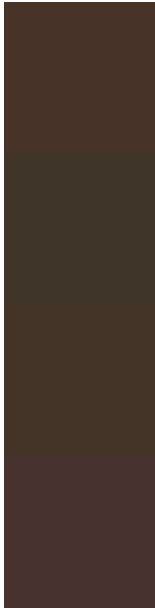
55.4050, 11.9210, -1.2870



Tritanopia

56.3330, 12.4240, 6.1200

Trichromacy



Original Color

55.7260, 15.4510, 0.8190

Protanomaly

55.2090, 9.5370, -2.1350

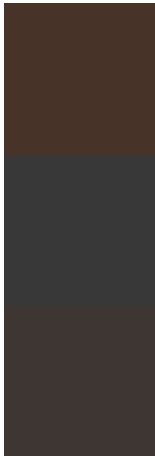
Deuteranomaly

55.4160, 13.3880, -0.3400

Tritanomaly

56.3500, 13.7540, 4.0420

Monochromacy



Original Color

55.7260, 15.4510, 0.8190

Achromatopsia

56.0000, -0.0000, 0.0000

Achromatomaly

55.6370, 5.4560, 0.2400

CSS Examples

Text

The CSS property to change the color of the text to YIQ 55.7260, 15.4510, 0.8190 is called "color". The color property can be set on classes, ids or directly on the HTML element.

This example shows how text in the color `rgb(71, 51, 40)` looks like.

```
.text, #text, p{  
    color:rgb(71, 51, 40)  
}
```

If you want to add a text shadow in that color use the text-shadow property, you can generate a text shadow directly with our [CSS Text Shadow Generator](#).

Here you see how black text with a 4 pixel rgb(71, 51, 40) colored shadow looks like.

```
.shadow{ text-shadow: 4px 4px 2px rgb(71, 51, 40) }
```

Border

The CSS property to change the border of an element to YIQ 55.7260, 15.4510, 0.8190 is called "border". The border property can be set on classes, ids or directly on the HTML element.

This example shows the color as border, it can be applied via the CSS property "border" or "border-color".

```
.border, #border, table{ border:4px solid rgb(71, 51, 40) }
```


If only the border color should be changed use the property `border-color`.

```
.border{ border-color:rgb(71, 51, 40) }
```

If you want to add a box shadow in that color use:

Here you see how a box with a 4 pixel `rgb(71, 51, 40)` colored shadow looks like.

```
.boxshadow{ -moz-box-shadow:4px 4px 4px  
4px rgb(71, 51, 40); -webkit-box-  
shadow:4px 4px 4px 4px rgb(71, 51, 40);  
box-shadow:4px 4px 4px 4px rgb(71, 51, 40)  
}
```

Background

The CSS property to change the background color of an element to YIQ 55.7260, 15.4510, 0.8190 is called "background". The background property can be set on classes, ids or directly on the HTML element.

```
.background, #background, body{  
background: rgb(71, 51, 40) }
```

If only the background color should be changed can be used:

```
.background{ background-color: rgb(71, 51,  
40) }
```

This example shows the color as background, it is applied via the CSS property "background".

To optimize and compress your CSS code, you can use our [online CSS compressor and optimizer](#) based on csstidy. If you want to create a linear or radial gradient as background or border, check our [CSS Gradient Generator](#).

Hey! You found this booklet interesting? Support Converting Colors with the new Membership Option!

The pro membership hides all ads, plus gives you double the colors in the color bucket, and more awesome pro features!

[Learn more, Memberships starting at \\$2.50/m!](#)

**Follow me
on Twitter!**

@ConvertingColor