

Converting Colors

YIQ(55.8560, 18.2010, 6.0490)

Have a look what the booklet for
YIQ(55.8560, 18.2010, 6.0490)
contains.

YIQ(55.8560, 18.2010, 6.0490)	3
<i>Conversions</i>	4
<i>Details</i>	6
<i>Harmonies</i>	12
<i>Previews</i>	24
<i>Color Blindness Simulation</i>	28
<i>CSS Examples</i>	31

Color

**YIQ(55.8560, 18.2010,
6.0490)**

Conversions

Conversions Part 1

Format	Color
Hex	4D2F2E
RGB	77, 47, 46
RGB Percent	30%, 18%, 18%
CMY	0.6980, 0.8157, 0.8195
CMYK	0.00, 0.39, 0.40, 0.70
HSL	2°, 25%, 24%
HSV	2°, 40%, 30%
XYZ	4.5715, 3.8080, 3.0808
YIQ	55.8560, 18.2010, 6.0490

Conversions

Conversions Part 2

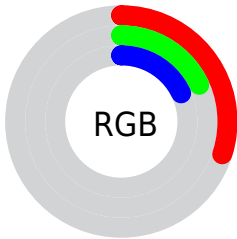
Format	Color
RYB	77, 47, 46
Decimal	5058350
CIELab	23.03, 13.62, 6.34
CIElCh	23, 15.024, 24.972
Yxy	3.8080, 0.3989, 0.3323
Android (android.graphics.Color)	4283248430 (0xFF4D2F2E)
YUV	55.8560, -4.8590, 18.5433
Hunter-Lab	19.5140, 7.6677, 4.2994

Details

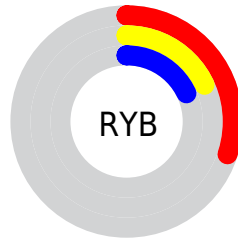
The YIQ color **55.8560, 18.2010, 6.0490** is a dark color, and the websafe version is hex **663333**. A complement of this color would be **67.1440, -18.2010, -6.0490**, and the grayscale version is **56.0000, -0.0000, 0.0000**.

A 20% lighter version of the original color is **103.0520, 20.5850, 6.8970**, and **10.1660, 20.2640, 7.2080** is the 20% darker color. If you saturate the color by 10%, you get **50.8350, 22.6940, 7.2220**, and if you desaturate by 10%, it is **60.8770, 13.7080, 4.8760**.

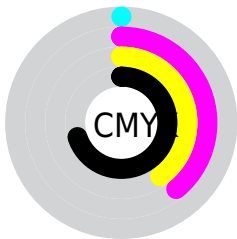
Distribution



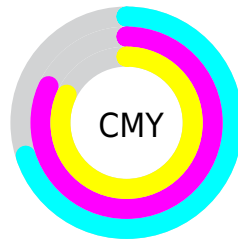
- Red (30%)
- Green (18%)
- Blue (18%)



- Red (30%)
- Yellow (18%)
- Blue (18%)



- Cyan (0%)
- Magenta (39%)
- Yellow (40%)
- Black (70%)



- Cyan (70%)
- Magenta (82%)
- Yellow (82%)

Brightness & Saturation Gradients

These gradients show how the YIQ color 55.8560, 18.2010, 6.0490 changes by changing the brightness by 10 percent. The first figure shows a shift by +10% for each color and the second figure -10%.

Similar to the brightness gradients but the following saturation gradients show a change of the YIQ color 55.8560, 18.2010, 6.0490 by changing the saturation by 10% instead.

■ 55.8560, 18.2010,
6.0490

■ 55.8560, 18.2010,
6.0490

■ 255.0000, -0.0000,
-0.0000

■ 33.9590, 16.4130,
5.4130

■ 103.0520, 20.5850,
6.8970

■ 10.1660, 20.2640,
7.2080

■ 128.5360, 22.0980,
7.0100

■ 0.0000, 0.0000,
0.0000

■ 154.8350, 22.6940,
7.2220

■ 181.4330, 23.8860,
7.6460

■ 209.3190, 24.2070,
7.3350

■ 234.3290, 18.2470,

5.2150

254.0710, 1.2380,
-0.4100

■ 55.8560, 18.2010,
6.0490

■ 55.8560, 18.2010,
6.0490

■ 50.8350, 22.6940,
7.2220

■ 60.8770, 13.7080,
4.8760

■ 45.3410, 27.1410,
9.2290

■ 66.3710, 9.2610,
2.8690

■ 40.3200, 31.6340,
10.4020

■ 71.3920, 4.7680,
1.6960

■ 34.7120, 36.4020,
12.0980

■ 77.0000, -0.0000,
-0.0000

■ 29.8050, 40.5740,
13.5820

■ 82.0210, -4.4930,
-1.1730

■ 24.1970, 45.3420,
15.2780

■ 87.5150, -8.9400,
-3.1800

■ 92.5360, -13.4330,
-4.3530

■ 98.1440, -18.2010,
-6.0490

■ 103.0510,
-22.3730, -7.5330

Harmonies

Analogous

The Analogous color harmony consists of three colors that are next to each other on the color wheel.



56.5120, 13.4780, 9.0460



55.8560, 18.2010, 6.0490



55.3950, 17.8810, 0.8330

Triad

The Triadic color harmony groups three colors that are evenly spaced from another and form a triangle on the color wheel.



55.8560, 18.2010, 6.0490



51.9680, -6.1420, -9.8380



53.3000, -18.3400, 1.9800

Complementary

The Complementary color scheme is a pair of colors which are on the opposite of each other on the color wheel.



55.8560, 18.2010, 6.0490



67.1440, -18.2010, -6.0490

Split Complementary

Split-complementary colors differ from the complementary color scheme. The scheme consists of three colors, the original color and two neighbors of the complement color.



49.2340, -27.1420, -3.7020



55.8560, 18.2010, 6.0490



49.9220, -17.6960, -9.6960

Square

The Square scheme is like the rectangle color scheme, but the four colors are evenly spaced on the color wheel.



55.8560, 18.2010, 6.0490



53.1820, 4.9990, -8.0010



48.1860, -27.1870, -8.3950



55.8070, -6.4660, 7.0540

Rectangle

The Rectangle color scheme consists of four colors that form a rectangle on the color wheel.



55.8560, 18.2010, 6.0490



54.6180, 15.6350, -2.5170



48.1860, -27.1870, -8.3950



51.9790, -21.8700, -0.1260

Sweetspot

The Sweet Spot groups the original color and five complimentary colors.



55.8560, 18.2010, 6.0490



91.2890, 6.5560, 2.3320



58.8030, 8.5250, 16.2130



46.0930, 4.1720, 1.4840



179.0000, -0.0000, -0.0000



51.0000, -0.0000, -0.0000

Same Dimension

The Same Dimension uses a secret algorithm to generate beautiful new colors.



55.8560, 18.2010, 6.0490



66.6400, 27.7370, 9.4410



64.6610, 14.0760, -1.7960



35.7830, 2.1090, 0.3250



32.2590, 59.9670, 20.0550



72.8790, 135.1550, 45.0990

Inverse Universe

The Inverse Universe completely reimagines the original color for something new.



67.1440, -18.2010, -6.0490



84.3600, -27.7370, -9.4410



58.3390, -14.0760, 1.7960



36.8040, -2.3840, -0.8480



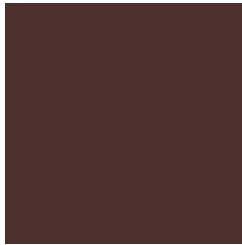
69.7410, -59.9670, -20.0550



156.5340, -134.8800, -44.5760

Previews

White Background



This preview shows how the YIQ color 55.8560, 18.2010, 6.0490 looks on a white background.

Color Contrast Check

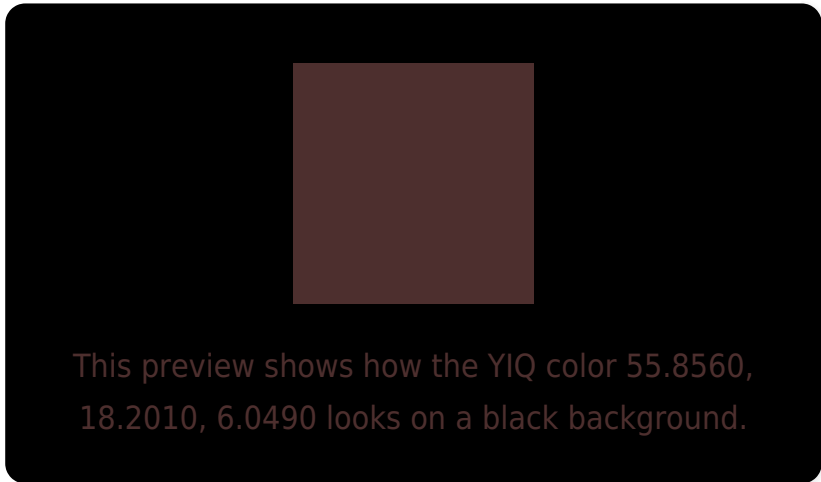
Large Text (above 18pt) WCAG AA ✓ Pass

Any Text WCAG AA ✓ Pass

Large Text (above 18pt) WCAG AAA ✓ Pass

Any Text WCAG AAA ✓ Pass

Black Background



Color Contrast Check

Large Text (above 18pt) WCAG AA × Fail

Any Text WCAG AA × Fail

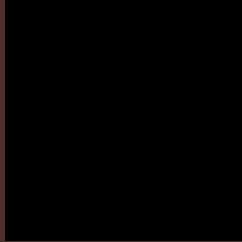
Large Text (above 18pt) WCAG AAA × Fail

Any Text WCAG AAA × Fail

If you want to check with other color combinations, try the [Color Contrast Checker](#).

YIQ 55.8560, 18.2010, 6.0490

Background



This preview shows how black text looks on a background with the YIQ color 55.8560, 18.2010, 6.0490.

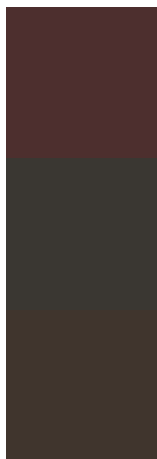


This preview shows how white text looks on a background with the YIQ color 55.8560, 18.2010,

Color Blindness Simulation

Color vision deficiency is a very complex topic, and I could not describe the different causes any better than Wikipedia does, so if you want to learn more, you should check out their [article about color blindness](#).

Dichromacy



Original Color

55.8560, 18.2010, 6.0490

Protanopia

55.3270, 3.3930, -0.9190

Deuteranopia

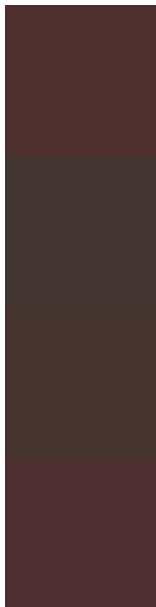
55.3770, 9.1240, -0.1560



Tritanopia

55.7250, 17.1920, 7.8160

Trichromacy



Original Color

55.8560, 18.2010, 6.0490

Protanomaly

55.5450, 8.7110, 1.8230

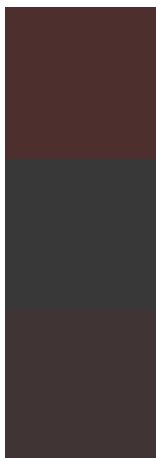
Deuteranomaly

55.6980, 12.6540, 1.9500

Tritanomaly

55.6110, 17.5130, 7.5050

Monochromacy



Original Color

55.8560, 18.2010, 6.0490

Achromatopsia

56.0000, -0.0000, 0.0000

Achromatomaly

56.1750, 6.8770, 2.0210

CSS Examples

Text

The CSS property to change the color of the text to YIQ 55.8560, 18.2010, 6.0490 is called "color". The color property can be set on classes, ids or directly on the HTML element.

This example shows how text in the color `rgb(77, 47, 46)` looks like.

```
.text, #text, p{  
    color:rgb(77, 47, 46)  
}
```

If you want to add a text shadow in that color use the text-shadow property, you can generate a text shadow directly with our [CSS Text Shadow Generator](#).

Here you see how black text with a 4 pixel rgb(77, 47, 46) colored shadow looks like.

```
.shadow{ text-shadow: 4px 4px 2px rgb(77, 47, 46) }
```

Border

The CSS property to change the border of an element to YIQ 55.8560, 18.2010, 6.0490 is called "border". The border property can be set on classes, ids or directly on the HTML element.

This example shows the color as border, it can be applied via the CSS property "border" or "border-color".

```
.border, #border, table{ border:4px solid rgb(77, 47, 46) }
```


If only the border color should be changed use the property `border-color`.

```
.border{ border-color:rgb(77, 47, 46) }
```

If you want to add a box shadow in that color use:

Here you see how a box with a 4 pixel `rgb(77, 47, 46)` colored shadow looks like.

```
.boxshadow{ -moz-box-shadow:4px 4px 4px  
4px rgb(77, 47, 46); -webkit-box-  
shadow:4px 4px 4px 4px rgb(77, 47, 46);  
box-shadow:4px 4px 4px 4px rgb(77, 47, 46)  
}
```

Background

The CSS property to change the background color of an element to YIQ 55.8560, 18.2010, 6.0490 is called "background". The background property can be set on classes, ids or directly on the HTML element.

```
.background, #background, body{  
background: rgb(77, 47, 46) }
```

If only the background color should be changed can be used:

```
.background{ background-color: rgb(77, 47,  
46) }
```

This example shows the color as background, it is applied via the CSS property "background".

To optimize and compress your CSS code, you can use our [online CSS compressor and optimizer](#) based on csstidy. If you want to create a linear or radial gradient as background or border, check our [CSS Gradient Generator](#).

Hey! You found this booklet interesting? Support Converting Colors with the new Membership Option!

The pro membership hides all ads, plus gives you double the colors in the color bucket, and more awesome pro features!

[Learn more, Memberships starting at \\$2.50/m!](#)

**Follow me
on Twitter!**

@ConvertingColor