

Converting Colors

YIQ(56.0570, 13.0210, 0.8050)

Have a look what the booklet for
YIQ(56.0570, 13.0210, 0.8050)
contains.

YIQ(56.0570, 13.0210, 0.8050)	3
<i>Conversions</i>	4
<i>Details</i>	6
<i>Harmonies</i>	12
<i>Previews</i>	24
<i>Color Blindness Simulation</i>	28
<i>CSS Examples</i>	31

Color

**YIQ(56.0570, 13.0210,
0.8050)**

Conversions

Conversions Part 1

Format	Color
Hex	45342B
RGB	69, 52, 43
RGB Percent	27%, 20%, 17%
CMY	0.7294, 0.7961, 0.8313
CMYK	0.00, 0.25, 0.38, 0.73
HSL	21°, 23%, 22%
HSV	21°, 38%, 27%
XYZ	4.1189, 3.8954, 2.8217
YIQ	56.0570, 13.0210, 0.8050

Conversions

Conversions Part 2

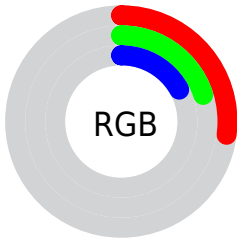
Format	Color
RYB	69, 57, 43
Decimal	4535339
CIELab	23.32, 6.13, 8.61
CIElCh	23, 10.571, 54.558
Yxy	3.8954, 0.3801, 0.3595
Android (android.graphics.Color)	4282725419 (0xFF45342B)
YUV	56.0570, -6.4371, 11.3510
Hunter-Lab	19.7368, 2.7118, 5.3391

Details

The YIQ color **56.0570, 13.0210, 0.8050** is a dark color, and the websafe version is hex **333333**. A complement of this color would be **55.9430, -13.0210, -0.8050**, and the grayscale version is **56.0000, -0.0000, 0.0000**.

A 20% lighter version of the original color is **102.8400, 15.1300, 1.1300**, and **11.8830, 13.5710, 1.8510** is the 20% darker color. If you saturate the color by 10%, you get **52.3240, 16.6430, 1.2430**, and if you desaturate by 10%, it is **59.7900, 9.3990, 0.3670**.

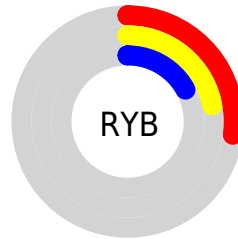
Distribution



Red (27%)

Green (20%)

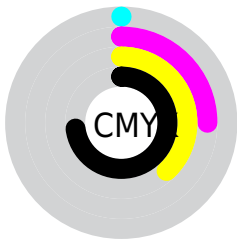
Blue (17%)



Red (27%)

Yellow (22%)

Blue (17%)

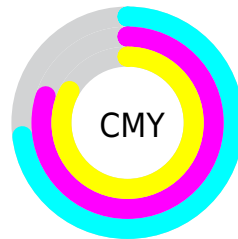


Cyan (0%)

Magenta (25%)

Yellow (38%)

Black (73%)



Cyan (73%)

Magenta (80%)

Yellow (83%)

Brightness & Saturation Gradients

These gradients show how the YIQ color 56.0570, 13.0210, 0.8050 changes by changing the brightness by 10 percent. The first figure shows a shift by +10% for each color and the second figure -10%.

Similar to the brightness gradients but the following saturation gradients show a change of the YIQ color 56.0570, 13.0210, 0.8050 by changing the saturation by 10% instead.

■ 56.0570, 13.0210,
0.8050

■ 56.0570, 13.0210,
0.8050

255.0000, -0.0000,
-0.0000

■ 34.5730, 11.5080,
0.6920

■ 102.8400, 15.1300,
1.1300

■ 11.8830, 13.5710,
1.8510

■ 128.1390, 15.7260,
1.3420

■ 0.0000, 0.0000,
0.0000

■ 154.0250, 16.0470,
1.0310

■ 181.3240, 16.6430,
1.2430

■ 208.6230, 17.2390,
1.4550

■ 236.9220, 17.8350,

1.6670

254.2020, 2.2470,
-2.1770

56.0570, 13.0210,
0.8050

56.0570, 13.0210,
0.8050

52.3240, 16.6430,
1.2430

59.7900, 9.3990,
0.3670

49.1780, 19.9900,
1.1580

62.9360, 6.0520,
0.4520

45.4450, 23.6120,
1.5960

66.6690, 2.4300,
0.0140

42.2990, 26.9590,
1.5110

69.8150, -0.9170,
0.0990

38.6800, 30.2600,
2.2600

73.5480, -4.5390,
-0.3390

■ 35.5340, 33.6070,
2.1750

■ 76.5800, -7.5650,
-0.5650

■ 34.7190, 34.5240,
2.0760

■ 80.3130, -11.1870,
-1.0030

■ 83.4590, -14.5340,
-0.9180

■ 87.1920, -18.1560,
-1.3560

Harmonies

Analogous

The Analogous color harmony consists of three colors that are next to each other on the color wheel.



56.4640, 13.4330, 4.3530



56.0570, 13.0210, 0.8050



55.6820, 9.5830, -2.9690

Triad

The Triadic color harmony groups three colors that are evenly spaced from another and form a triangle on the color wheel.



56.0570, 13.0210, 0.8050



52.4390, -11.7820, -6.7420



56.1230, -4.5400, 5.1880

Complementary

The Complementary color scheme is a pair of colors which are on the opposite of each other on the color wheel.



56.0570, 13.0210, 0.8050



55.9430, -13.0210, -0.8050

Split Complementary

Split-complementary colors differ from the complementary color scheme. The scheme consists of three colors, the original color and two neighbors of the complement color.



54.7090, -12.2420, 1.5980



56.0570, 13.0210, 0.8050



52.1550, -16.7340, -5.1020

Square

The Square scheme is like the rectangle color scheme, but the four colors are evenly spaced on the color wheel.



56.0570, 13.0210, 0.8050



53.6310, -3.5750, -6.7990



53.1490, -16.5970, -2.0770



57.0700, 2.9790, 6.5870

Rectangle

The Rectangle color scheme consists of four colors that form a rectangle on the color wheel.



56.0570, 13.0210, 0.8050



54.4750, 5.7320, -4.7640



53.1490, -16.5970, -2.0770



55.6280, -7.5200, 4.1280

Sweetspot

The Sweet Spot groups the original color and five complimentary colors.



56.0570, 13.0210, 0.8050



84.3380, 4.8600, 0.0280



52.7120, 10.0390, 10.7990



42.9680, 3.0260, 0.2260



173.0000, -0.0000, 0.0000



46.0000, 0.0000, -0.0000

Same Dimension

The Same Dimension uses a secret algorithm to generate beautiful new colors.



56.0570, 13.0210, 0.8050



69.1780, 19.9900, 1.1580



63.6880, 9.4460, -5.9940



33.7830, 2.1090, 0.3250



49.5590, 49.6540, 3.2060



113.6590, 113.8420, 7.3300

Inverse Universe

The Inverse Universe completely reimagines the original color for something new.



55.9430, -13.0210, -0.8050



68.8220, -19.9900, -1.1580



48.3120, -9.4460, 5.9940



33.6300, -1.8340, 0.1980



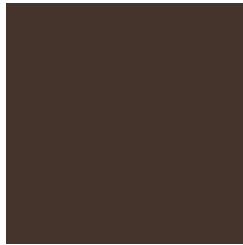
49.4410, -49.6540, -3.2060



113.3410, -113.8420, -7.3300

Previews

White Background



This preview shows how the YIQ color 56.0570, 13.0210, 0.8050 looks on a white background.

Color Contrast Check

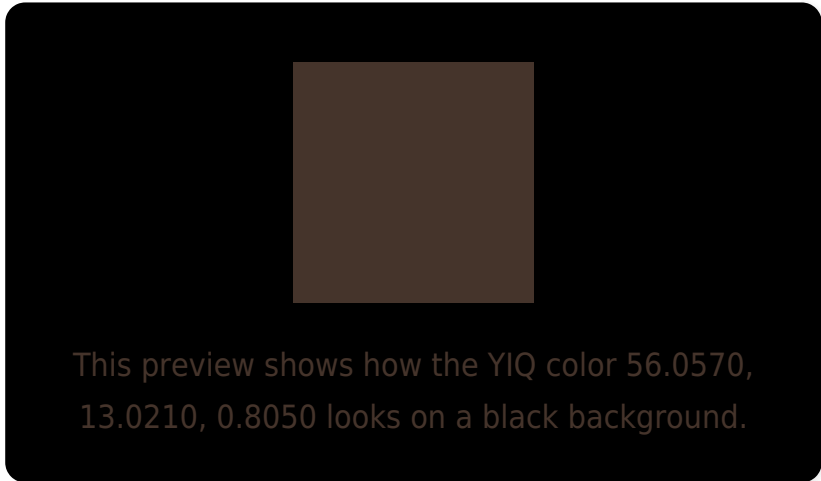
Large Text (above 18pt) WCAG AA ✓ Pass

Any Text WCAG AA ✓ Pass

Large Text (above 18pt) WCAG AAA ✓ Pass

Any Text WCAG AAA ✓ Pass

Black Background



Color Contrast Check

Large Text (above 18pt) WCAG AA × Fail

Any Text WCAG AA × Fail

Large Text (above 18pt) WCAG AAA × Fail

Any Text WCAG AAA × Fail

If you want to check with other color combinations, try the [Color Contrast Checker](#).

YIQ 56.0570, 13.0210, 0.8050

Background



This preview shows how black text looks on a background with the YIQ color 56.0570, 13.0210, 0.8050.



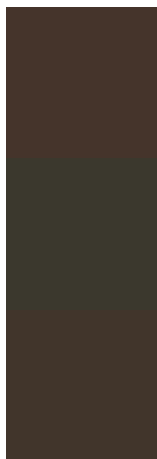
This preview shows how white text looks on a background with the YIQ color 56.0570, 13.0210,

0.8050.

Color Blindness Simulation

Color vision deficiency is a very complex topic, and I could not describe the different causes any better than Wikipedia does, so if you want to learn more, you should check out their [article about color blindness](#).

Dichromacy



Original Color

56.0570, 13.0210, 0.8050

Protanopia

55.6430, 5.3190, -2.7850

Deuteranopia

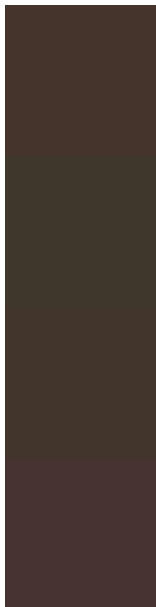
55.4480, 10.3620, -0.5660



Tritanopia

56.4360, 10.6360, 5.4840

Trichromacy



Original Color

56.0570, 13.0210, 0.8050

Protanomaly

56.1380, 8.2990, -1.7250

Deuteranomaly

55.7470, 10.9580, -0.3540

Tritanomaly

56.5670, 11.6450, 3.7170

Monochromacy



Original Color

56.0570, 13.0210, 0.8050

Achromatopsia

56.0000, -0.0000, 0.0000

Achromatomaly

56.3380, 4.8600, 0.0280

CSS Examples

Text

The CSS property to change the color of the text to YIQ 56.0570, 13.0210, 0.8050 is called "color". The color property can be set on classes, ids or directly on the HTML element.

This example shows how text in the color `rgb(69, 52, 43)` looks like.

```
.text, #text, p{  
    color:rgb(69, 52, 43)  
}
```

If you want to add a text shadow in that color use the text-shadow property, you can generate a text shadow directly with our [CSS Text Shadow Generator](#).

Here you see how black text with a 4 pixel rgb(69, 52, 43) colored shadow looks like.

```
.shadow{ text-shadow: 4px 4px 2px rgb(69, 52, 43) }
```

Border

The CSS property to change the border of an element to YIQ 56.0570, 13.0210, 0.8050 is called "border". The border property can be set on classes, ids or directly on the HTML element.

This example shows the color as border, it can be applied via the CSS property "border" or "border-color".

```
.border, #border, table{ border:4px solid rgb(69, 52, 43) }
```


If only the border color should be changed use the property `border-color`.

```
.border{ border-color:rgb(69, 52, 43) }
```

If you want to add a box shadow in that color use:

Here you see how a box with a 4 pixel `rgb(69, 52, 43)` colored shadow looks like.

```
.boxshadow{ -moz-box-shadow:4px 4px 4px  
4px rgb(69, 52, 43); -webkit-box-  
shadow:4px 4px 4px 4px rgb(69, 52, 43);  
box-shadow:4px 4px 4px 4px rgb(69, 52, 43)  
}
```

Background

The CSS property to change the background color of an element to YIQ 56.0570, 13.0210, 0.8050 is called "background". The background property can be set on classes, ids or directly on the HTML element.

```
.background, #background, body{  
background: rgb(69, 52, 43) }
```

If only the background color should be changed can be used:

```
.background{ background-color: rgb(69, 52,  
43) }
```

This example shows the color as background, it is applied via the CSS property "background".

To optimize and compress your CSS code, you can use our [online CSS compressor and optimizer](#) based on csstidy. If you want to create a linear or radial gradient as background or border, check our [CSS Gradient Generator](#).

Hey! You found this booklet interesting? Support Converting Colors with the new Membership Option!

The pro membership hides all ads, plus gives you double the colors in the color bucket, and more awesome pro features!

[Learn more, Memberships starting at \\$2.50/m!](#)

**Follow me
on Twitter!**

@ConvertingColor