

Converting Colors

YIQ(56.3020, 22.8770, 9.4130)

Have a look what the booklet for
YIQ(56.3020, 22.8770, 9.4130)
contains.

YIQ(56.3020, 22.8770, 9.4130)	3
<i>Conversions</i>	4
<i>Details</i>	6
<i>Harmonies</i>	12
<i>Previews</i>	24
<i>Color Blindness Simulation</i>	28
<i>CSS Examples</i>	31

Color

**YIQ(56.3020, 22.8770,
9.4130)**

Conversions

Conversions Part 1

Format	Color
Hex	542C2F
RGB	84, 44, 47
RGB Percent	33%, 17%, 18%
CMY	0.6705, 0.8275, 0.8156
CMYK	0.00, 0.48, 0.44, 0.67
HSL	355°, 31%, 25%
HSV	355°, 48%, 33%
XYZ	5.0720, 3.8915, 3.1755
YIQ	56.3020, 22.8770, 9.4130

Conversions

Conversions Part 2

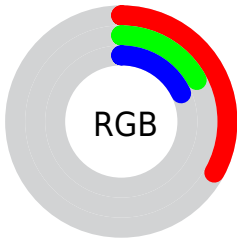
Format	Color
RYB	84, 44, 47
Decimal	5516335
CIELab	23.31, 18.80, 6.21
CIElCh	23, 19.804, 18.282
Yxy	3.8915, 0.4178, 0.3206
Android (android.graphics.Color)	4283706415 (0xFF542C2F)
YUV	56.3020, -4.5859, 24.2911
Hunter-Lab	19.7269, 11.3721, 4.2646

Details

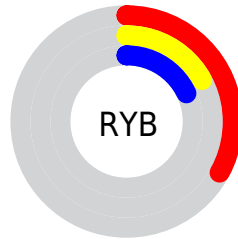
The YIQ color **56.3020, 22.8770, 9.4130** is a dark color, and the websafe version is hex **663333**. A complement of this color would be **71.6980, -22.8770, -9.4130**, and the grayscale version is **56.0000, -0.0000, 0.0000**.

A 20% lighter version of the original color is **104.3840, 25.5820, 9.9500**, and **11.6610, 23.2440, 8.2680** is the 20% darker color. If you saturate the color by 10%, you get **50.6940, 27.6450, 11.1090**, and if you desaturate by 10%, it is **61.9100, 18.1090, 7.7170**.

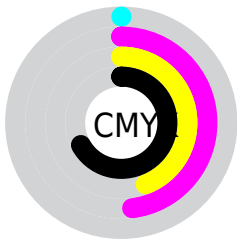
Distribution



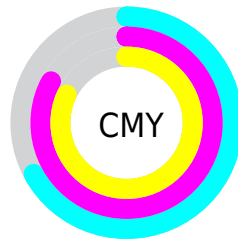
- Red (33%)
- Green (17%)
- Blue (18%)



- Red (33%)
- Yellow (17%)
- Blue (18%)



- Cyan (0%)
- Magenta (48%)
- Yellow (44%)
- Black (67%)



- Cyan (67%)
- Magenta (83%)
- Yellow (82%)

Brightness & Saturation Gradients

These gradients show how the YIQ color 56.3020, 22.8770, 9.4130 changes by changing the brightness by 10 percent. The first figure shows a shift by +10% for each color and the second figure -10%.

Similar to the brightness gradients but the following saturation gradients show a change of the YIQ color 56.3020, 22.8770, 9.4130 by changing the saturation by 10% instead.

■ 56.3020, 22.8770,
9.4130

■ 56.3020, 22.8770,
9.4130

■ 255.0000, -0.0000,
-0.0000

■ 33.8180, 21.3640,
9.3000

■ 103.7970, 25.8570,
10.4730

■ 11.6610, 23.2440,
8.2680

■ 129.2810, 27.3700,
10.5860

■ 0.0000, 0.0000,
0.0000

■ 155.8790, 28.5620,
11.0100

■ 183.0640, 29.4790,
10.9110

■ 210.7760, 30.3500,
11.6460

■ 232.7960, 18.4300,

7.4060

253.0110, 1.4670,
0.9470

56.3020, 22.8770,
9.4130

56.3020, 22.8770,
9.4130

50.6940, 27.6450,
11.1090

61.9100, 18.1090,
7.7170

44.4990, 32.6880,
13.3280

68.1050, 13.0660,
5.4980

39.0050, 37.1350,
15.3350

73.5990, 8.6190,
3.4910

32.8100, 42.1780,
17.5540

79.7940, 3.5760,
1.2720

27.2020, 46.9460,
19.2500

85.4020, -1.1920,
-0.4240

■ 25.8000, 48.1380,
19.6740

■ 91.0100, -5.9600,
-2.1200

■ 97.0910, -10.6820,
-4.6500

■ 102.6990,
-15.4500, -6.3460

■ 108.8940,
-20.4930, -8.5650

Harmonies

Analogous

The Analogous color harmony consists of three colors that are next to each other on the color wheel.



56.8160, 15.6780, 13.2300



56.3020, 22.8770, 9.4130



55.3850, 23.8410, 2.9530

Triad

The Triadic color harmony groups three colors that are evenly spaced from another and form a triangle on the color wheel.



56.3020, 22.8770, 9.4130



51.4580, -4.7660, -12.7500



50.1890, -31.2690, -0.4930

Complementary

The Complementary color scheme is a pair of colors which are on the opposite of each other on the color wheel.



56.3020, 22.8770, 9.4130



71.6980, -22.8770, -9.4130

Split Complementary

Split-complementary colors differ from the complementary color scheme. The scheme consists of three colors, the original color and two neighbors of the complement color.



45.1720, -41.7670, -8.4790



56.3020, 22.8770, 9.4130



47.9490, -22.3260, -13.8940

Square

The Square scheme is like the rectangle color scheme, but the four colors are evenly spaced on the color wheel.



56.3020, 22.8770, 9.4130



53.8680, 8.7590, -10.0650



44.2770, -37.8690, -13.0450



55.6260, -13.2060, 8.0580

Rectangle

The Rectangle color scheme consists of four colors that form a rectangle on the color wheel.



56.3020, 22.8770, 9.4130



55.2550, 21.0910, -2.2770



44.2770, -37.8690, -13.0450



46.4760, -39.5670, -4.2950

Sweetspot

The Sweet Spot groups the original color and five complimentary colors.



56.3020, 22.8770, 9.4130



98.8980, 9.2150, 3.7030



59.6230, 9.2120, 20.2840



49.6910, 5.3640, 1.9080



184.0000, 0.0000, -0.0000



56.0000, -0.0000, 0.0000

Same Dimension

The Same Dimension uses a secret algorithm to generate beautiful new colors.



56.3020, 22.8770, 9.4130



66.4070, 35.9430, 14.9110



65.9390, 19.1650, -0.4110



38.1960, 2.3840, 0.8480



32.3070, 60.0120, 24.7480



71.4200, 132.4940, 54.7820

Inverse Universe

The Inverse Universe completely reimagines the original color for something new.



56.3020, 22.8770, 9.4130



66.4070, 35.9430, 14.9110



62.0610, -19.1650, 0.4110



38.1960, 2.3840, 0.8480



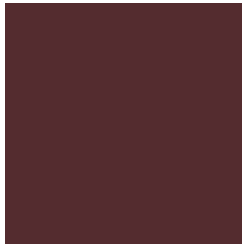
32.3070, 60.0120, 24.7480



71.4200, 132.4940, 54.7820

Previews

White Background



This preview shows how the YIQ color 56.3020, 22.8770, 9.4130 looks on a white background.

Color Contrast Check

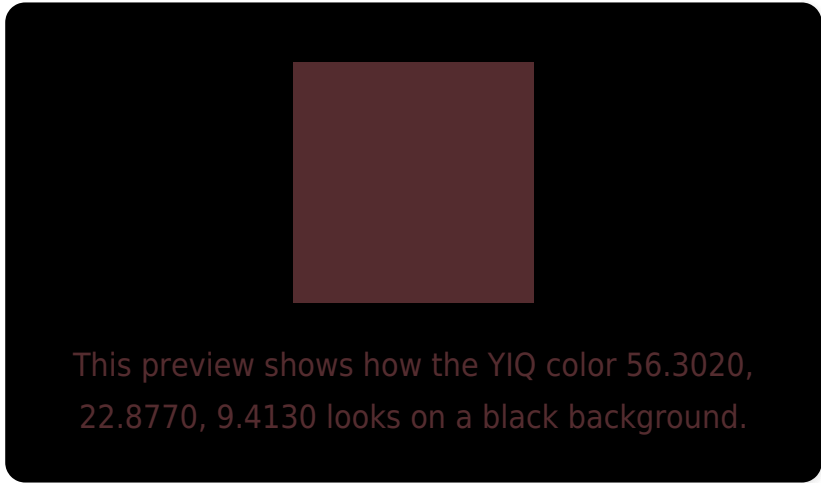
Large Text (above 18pt) WCAG AA ✓ Pass

Any Text WCAG AA ✓ Pass

Large Text (above 18pt) WCAG AAA ✓ Pass

Any Text WCAG AAA ✓ Pass

Black Background



Color Contrast Check

Large Text (above 18pt) WCAG AA × Fail

Any Text WCAG AA × Fail

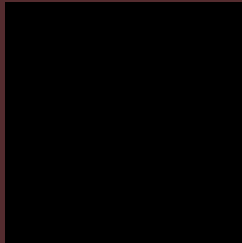
Large Text (above 18pt) WCAG AAA × Fail

Any Text WCAG AAA × Fail

If you want to check with other color combinations, try the [Color Contrast Checker](#).

YIQ 56.3020, 22.8770, 9.4130

Background



This preview shows how black text looks on a background with the YIQ color 56.3020, 22.8770, 9.4130.



This preview shows how white text looks on a background with the YIQ color 56.3020, 22.8770,

Color Blindness Simulation

Color vision deficiency is a very complex topic, and I could not describe the different causes any better than Wikipedia does, so if you want to learn more, you should check out their [article about color blindness](#).

Dichromacy



Original Color

56.3020, 22.8770, 9.4130

Protanopia

56.2560, 2.1550, -0.5090

Deuteranopia

56.2630, 9.4450, -0.4670



Tritanopia

56.3020, 22.8770, 9.4130

Trichromacy



Original Color

56.3020, 22.8770, 9.4130

Protanomaly

56.3710, 9.2610, 2.8690

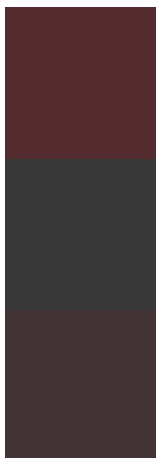
Deuteranomaly

56.1220, 14.3960, 3.4200

Tritanomaly

56.3020, 22.8770, 9.4130

Monochromacy



Original Color

56.3020, 22.8770, 9.4130

Achromatopsia

56.0000, -0.0000, 0.0000

Achromatomaly

56.3000, 8.0230, 3.2790

CSS Examples

Text

The CSS property to change the color of the text to YIQ 56.3020, 22.8770, 9.4130 is called "color". The color property can be set on classes, ids or directly on the HTML element.

This example shows how text in the color `rgb(84, 44, 47)` looks like.

```
.text, #text, p{  
    color:rgb(84, 44, 47)  
}
```

If you want to add a text shadow in that color use the text-shadow property, you can generate a text shadow directly with our [CSS Text Shadow Generator](#).

Here you see how black text with a 4 pixel rgb(84, 44, 47) colored shadow looks like.

```
.shadow{ text-shadow: 4px 4px 2px rgb(84, 44, 47) }
```

Border

The CSS property to change the border of an element to YIQ 56.3020, 22.8770, 9.4130 is called "border". The border property can be set on classes, ids or directly on the HTML element.

This example shows the color as border, it can be applied via the CSS property "border" or "border-color".

```
.border, #border, table{ border:4px solid rgb(84, 44, 47) }
```


If only the border color should be changed use the property `border-color`.

```
.border{ border-color:rgb(84, 44, 47) }
```

If you want to add a box shadow in that color use:

Here you see how a box with a 4 pixel `rgb(84, 44, 47)` colored shadow looks like.

```
.boxshadow{ -moz-box-shadow:4px 4px 4px  
4px rgb(84, 44, 47); -webkit-box-  
shadow:4px 4px 4px 4px rgb(84, 44, 47);  
box-shadow:4px 4px 4px 4px rgb(84, 44, 47)  
}
```

Background

The CSS property to change the background color of an element to YIQ 56.3020, 22.8770, 9.4130 is called "background". The background property can be set on classes, ids or directly on the HTML element.

```
.background, #background, body{  
background: rgb(84, 44, 47) }
```

If only the background color should be changed can be used:

```
.background{ background-color: rgb(84, 44,  
47) }
```

This example shows the color as background, it is applied via the CSS property "background".

To optimize and compress your CSS code, you can use our [online CSS compressor and optimizer](#) based on csstidy. If you want to create a linear or radial gradient as background or border, check our [CSS Gradient Generator](#).

Hey! You found this booklet interesting? Support Converting Colors with the new Membership Option!

The pro membership hides all ads, plus gives you double the colors in the color bucket, and more awesome pro features!

[Learn more, Memberships starting at \\$2.50/m!](#)

**Follow me
on Twitter!**

@ConvertingColor