

Converting Colors

YIQ(57.0340, 11.8280, 5.9080)

Have a look what the booklet for
YIQ(57.0340, 11.8280, 5.9080)
contains.

YIQ(57.0340, 11.8280, 5.9080)	3
<i>Conversions</i>	4
<i>Details</i>	6
<i>Harmonies</i>	12
<i>Previews</i>	24
<i>Color Blindness Simulation</i>	28
<i>CSS Examples</i>	31

Color

**YIQ(57.0340, 11.8280,
5.9080)**

Conversions

Conversions Part 1

Format	Color
Hex	483236
RGB	72, 50, 54
RGB Percent	28%, 20%, 21%
CMY	0.7176, 0.8039, 0.7882
CMYK	0.00, 0.31, 0.25, 0.72
HSL	349°, 18%, 24%
HSV	349°, 31%, 28%
XYZ	4.4799, 3.9251, 4.0129
YIQ	57.0340, 11.8280, 5.9080

Conversions

Conversions Part 2

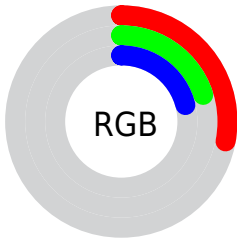
Format	Color
R_{YB}	72, 50, 54
Decimal	4731446
CIE Lab	23.42, 10.69, 1.41
CIE LCh	23, 10.780, 7.527
Yxy	3.9251, 0.3608, 0.3161
Android (android.graphics.Color)	4282921526 (0xFF483236)
YUV	57.0340, -1.4958, 13.1252
Hunter-Lab	19.8119, 5.6915, 1.8591

Details

The YIQ color **57.0340, 11.8280, 5.9080** is a dark color, and the websafe version is hex **333333**. A complement of this color would be **64.9660, -11.8280, -5.9080**, and the grayscale version is **57.0000, 0.0000, 0.0000**.

A 20% lighter version of the original color is **104.0450, 13.2950, 6.8550**, and **12.4580, 13.5700, 7.3780** is the 20% darker color. If you saturate the color by 10%, you get **52.2410, 15.6790, 7.7030**, and if you desaturate by 10%, it is **61.8270, 7.9770, 4.1130**.

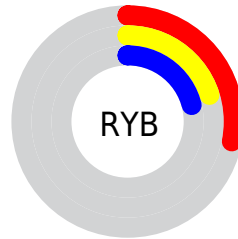
Distribution



Red (28%)

Green (20%)

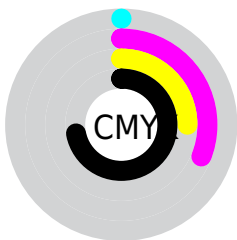
Blue (21%)



Red (28%)

Yellow (20%)

Blue (21%)

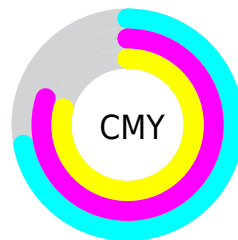


Cyan (0%)

Magenta (31%)

Yellow (25%)

Black (72%)



Cyan (72%)

Magenta (80%)

Yellow (79%)

Brightness & Saturation Gradients

These gradients show how the YIQ color 57.0340, 11.8280, 5.9080 changes by changing the brightness by 10 percent. The first figure shows a shift by +10% for each color and the second figure -10%.

Similar to the brightness gradients but the following saturation gradients show a change of the YIQ color 57.0340, 11.8280, 5.9080 by changing the saturation by 10% instead.

■ 57.0340, 11.8280,
5.9080

■ 57.0340, 11.8280,
5.9080

■ 255.0000, -0.0000,
-0.0000

■ 35.4360, 10.6360,
5.4840

■ 104.0450, 13.2950,
6.8550

■ 12.4580, 13.5700,
7.3780

■ 129.3440, 13.8910,
7.0670

■ 0.0000, 0.0000,
0.0000

■ 155.5290, 14.8080,
6.9680

■ 182.5290, 14.8080,
6.9680

■ 209.9420, 15.0830,
7.4910

■ 237.3440, 13.8910,

7.0670

■ 57.0340, 11.8280,
5.9080

■ 57.0340, 11.8280,
5.9080

■ 52.2410, 15.6790,
7.7030

■ 61.8270, 7.9770,
4.1130

■ 47.4480, 19.5300,
9.4980

■ 66.6200, 4.1260,
2.3180

■ 42.0680, 23.6560,
11.8160

■ 72.0000, -0.0000,
0.0000

■ 37.2750, 27.5070,
13.6110

■ 76.7930, -3.8510,
-1.7950

■ 32.5960, 31.0370,
15.7170

■ 81.4720, -7.3810,
-3.9010

■ 27.8030, 34.8880,
17.5120

■ 86.2650, -11.2320,
-5.6960

■ 23.0100, 38.7390,
19.3070

■ 91.0580, -15.0830,
-7.4910

■ 96.4380, -19.2090,
-9.8090

■ 101.2310,
-23.0600, -11.6040

Harmonies

Analogous

The Analogous color harmony consists of three colors that are next to each other on the color wheel.



57.3370, 6.6010, 7.0250



57.0340, 11.8280, 5.9080



56.7090, 14.1210, 2.8970

Triad

The Triadic color harmony groups three colors that are evenly spaced from another and form a triangle on the color wheel.



57.0340, 11.8280, 5.9080



54.1970, 0.6430, -6.1490



53.6870, -15.1760, -0.2960

Complementary

The Complementary color scheme is a pair of colors which are on the opposite of each other on the color wheel.



57.0340, 11.8280, 5.9080



64.9660, -11.8280, -5.9080

Split Complementary

Split-complementary colors differ from the complementary color scheme. The scheme consists of three colors, the original color and two neighbors of the complement color.



52.4970, -17.6970, -4.1690



57.0340, 11.8280, 5.9080



53.3640, -7.1970, -7.2370

Square

The Square scheme is like the rectangle color scheme, but the four colors are evenly spaced on the color wheel.



57.0340, 11.8280, 5.9080



55.3720, 7.5200, -4.1280



52.2970, -14.2580, -5.9220



55.7310, -9.3080, 3.4920

Rectangle

The Rectangle color scheme consists of four colors that form a rectangle on the color wheel.



57.0340, 11.8280, 5.9080



55.9430, 13.3420, 0.4940



52.2970, -14.2580, -5.9220



53.2630, -16.9180, -1.7660

Sweetspot

The Sweet Spot groups the original color and five complimentary colors.



57.0340, 11.8280, 5.9080



88.5060, 4.4470, 2.0070



57.8900, 3.6660, 10.6580



44.6090, 2.6590, 1.3710



176.0000, -0.0000, -0.0000



48.0000, -0.0000, 0.0000

Same Dimension

The Same Dimension uses a secret algorithm to generate beautiful new colors.



57.0340, 11.8280, 5.9080



70.2630, 18.6130, 9.5970



60.6870, 11.1870, 1.0030



33.3100, 2.0630, 1.1590



31.6530, 53.2260, 26.5860



72.5470, 122.1310, 60.8750

Inverse Universe

The Inverse Universe completely reimagines the original color for something new.



57.0340, 11.8280, 5.9080



70.2630, 18.6130, 9.5970



61.3130, -11.1870, -1.0030



33.3100, 2.0630, 1.1590



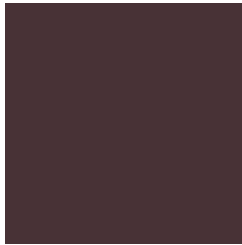
31.6530, 53.2260, 26.5860



72.5470, 122.1310, 60.8750

Previews

White Background



This preview shows how the YIQ color 57.0340, 11.8280, 5.9080 looks on a white background.

Color Contrast Check

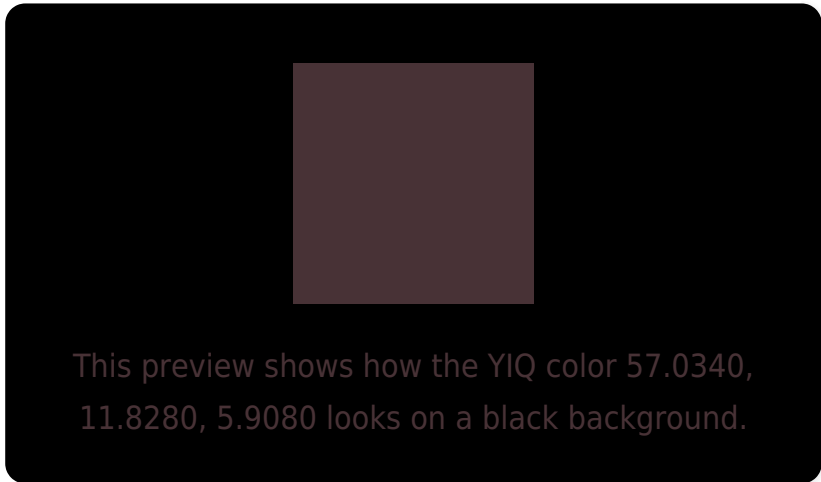
Large Text (above 18pt) WCAG AA ✓ Pass

Any Text WCAG AA ✓ Pass

Large Text (above 18pt) WCAG AAA ✓ Pass

Any Text WCAG AAA ✓ Pass

Black Background



Color Contrast Check

Large Text (above 18pt) WCAG AA × Fail

Any Text WCAG AA × Fail

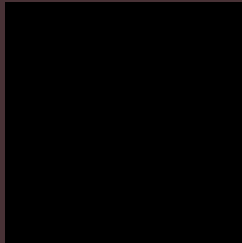
Large Text (above 18pt) WCAG AAA × Fail

Any Text WCAG AAA × Fail

If you want to check with other color combinations, try the [Color Contrast Checker](#).

YIQ 57.0340, 11.8280, 5.9080

Background



This preview shows how black text looks on a background with the YIQ color 57.0340, 11.8280, 5.9080.

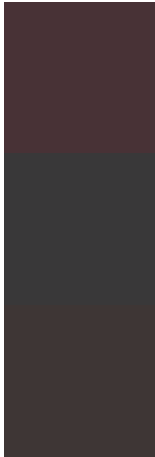


This preview shows how white text looks on a background with the YIQ color 57.0340, 11.8280,

Color Blindness Simulation

Color vision deficiency is a very complex topic, and I could not describe the different causes any better than Wikipedia does, so if you want to learn more, you should check out their [article about color blindness](#).

Dichromacy



Original Color

57.0340, 11.8280, 5.9080

Protanopia

56.4130, 0.2750, 0.5230

Deuteranopia

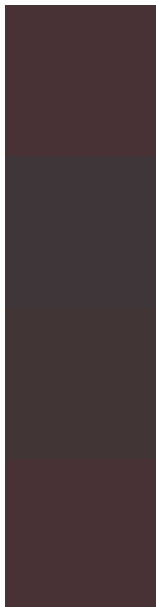
56.2780, 5.0890, 1.3850



Tritanopia

57.0340, 11.8280, 5.9080

Trichromacy



Original Color

57.0340, 11.8280, 5.9080

Protanomaly

56.6200, 4.1260, 2.3180

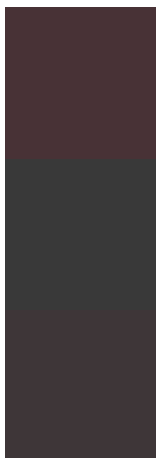
Deuteranomaly

56.8870, 7.7480, 2.7560

Tritanomaly

57.0340, 11.8280, 5.9080

Monochromacy



Original Color

57.0340, 11.8280, 5.9080

Achromatopsia

57.0000, 0.0000, 0.0000

Achromatomaly

56.6200, 4.1260, 2.3180

CSS Examples

Text

The CSS property to change the color of the text to YIQ 57.0340, 11.8280, 5.9080 is called "color". The color property can be set on classes, ids or directly on the HTML element.

This example shows how text in the color `rgb(72, 50, 54)` looks like.

```
.text, #text, p{  
    color:rgb(72, 50, 54)  
}
```

If you want to add a text shadow in that color use the text-shadow property, you can generate a text shadow directly with our [CSS Text Shadow Generator](#).

Here you see how black text with a 4 pixel rgb(72, 50, 54) colored shadow looks like.

```
.shadow{ text-shadow: 4px 4px 2px rgb(72, 50, 54) }
```

Border

The CSS property to change the border of an element to YIQ 57.0340, 11.8280, 5.9080 is called "border". The border property can be set on classes, ids or directly on the HTML element.

This example shows the color as border, it can be applied via the CSS property "border" or "border-color".

```
.border, #border, table{ border:4px solid rgb(72, 50, 54) }
```


If only the border color should be changed use the property `border-color`.

```
.border{ border-color:rgb(72, 50, 54) }
```

If you want to add a box shadow in that color use:

Here you see how a box with a 4 pixel `rgb(72, 50, 54)` colored shadow looks like.

```
.boxshadow{ -moz-box-shadow:4px 4px 4px  
4px rgb(72, 50, 54); -webkit-box-  
shadow:4px 4px 4px 4px rgb(72, 50, 54);  
box-shadow:4px 4px 4px 4px rgb(72, 50, 54)  
}
```

Background

The CSS property to change the background color of an element to YIQ 57.0340, 11.8280, 5.9080 is called "background". The background property can be set on classes, ids or directly on the HTML element.

```
.background, #background, body{  
background: rgb(72, 50, 54) }
```

If only the background color should be changed can be used:

```
.background{ background-color: rgb(72, 50,  
54) }
```

This example shows the color as background, it is applied via the CSS property "background".

To optimize and compress your CSS code, you can use our [online CSS compressor and optimizer](#) based on csstidy. If you want to create a linear or radial gradient as background or border, check our [CSS Gradient Generator](#).

Hey! You found this booklet
interesting? Support Converting
Colors with the new Membership
Option!

The pro membership hides all ads, plus gives you
double the colors in the color bucket, and more
awesome pro features!

[Learn more, Memberships starting at \\$2.50/m!](#)

**Follow me
on Twitter!**

@ConvertingColor