

Converting Colors

YIQ(57.4760, 13.1590, -1.6970)

Have a look what the booklet for
YIQ(57.4760, 13.1590, -1.6970)
contains.

YIQ(57.4760, 13.1590, -1.6970)	3
<i>Conversions</i>	4
<i>Details</i>	6
<i>Harmonies</i>	12
<i>Previews</i>	24
<i>Color Blindness Simulation</i>	28
<i>CSS Examples</i>	31

Color

**YIQ(57.4760, 13.1590,
-1.6970)**

Conversions

Conversions Part 1

Format	Color
Hex	453728
RGB	69, 55, 40
RGB Percent	27%, 22%, 16%
CMY	0.7294, 0.7843, 0.8431
CMYK	0.00, 0.20, 0.42, 0.73
HSL	31°, 27%, 21%
HSV	31°, 42%, 27%
XYZ	4.2039, 4.1506, 2.5885
YIQ	57.4760, 13.1590, -1.6970

Conversions

Conversions Part 2

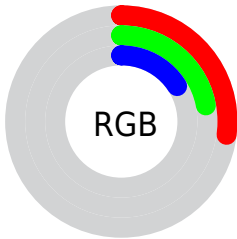
Format	Color
R_{YB}	67, 69, 40
Decimal	4536104
CIE Lab	24.16, 3.71, 11.74
CIE LCh	24, 12.310, 72.475
Yxy	4.1506, 0.3842, 0.3793
Android (android.graphics.Color)	4282726184 (0xFF453728)
YUV	57.4760, -8.6157, 10.1065
Hunter-Lab	20.3729, 1.1801, 6.7279

Details

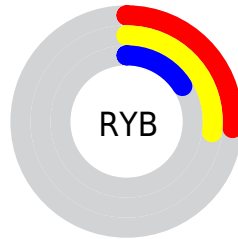
The YIQ color **57.4760, 13.1590, -1.6970** is a dark color, and the websafe version is hex **333333**. A complement of this color would be **51.5240, -13.1590, 1.6970**, and the grayscale version is **58.0000, -0.0000, 0.0000**.

A 20% lighter version of the original color is **104.8460, 14.9930, -1.8950**, and **14.8180, 12.1960, -0.7640** is the 20% darker color. If you saturate the color by 10%, you get **54.9170, 16.2310, -2.3050**, and if you desaturate by 10%, it is **60.0350, 10.0870, -1.0890**.

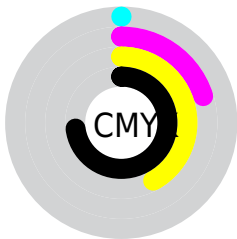
Distribution



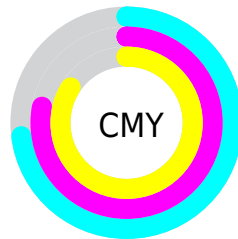
- Red (27%)
- Green (22%)
- Blue (16%)



- Red (26%)
- Yellow (27%)
- Blue (16%)



- Cyan (0%)
- Magenta (20%)
- Yellow (42%)
- Black (73%)



- Cyan (73%)
- Magenta (78%)
- Yellow (84%)

Brightness & Saturation Gradients

These gradients show how the YIQ color 57.4760, 13.1590, -1.6970 changes by changing the brightness by 10 percent. The first figure shows a shift by +10% for each color and the second figure -10%.

Similar to the brightness gradients but the following saturation gradients show a change of the YIQ color 57.4760, 13.1590, -1.6970 by changing the saturation by 10% instead.

■ 57.4760, 13.1590,
-1.6970

■ 57.4760, 13.1590,
-1.6970

■ 255.0000, -0.0000,
-0.0000

■ 35.9920, 11.6460,
-1.8100

■ 104.8460, 14.9930,
-1.8950

■ 14.8180, 12.1960,
-0.7640

■ 130.1450, 15.5890,
-1.6830

■ 0.0000, 0.0000,
0.0000

■ 156.3300, 16.5060,
-1.7820

■ 182.6290, 17.1020,
-1.5700

■ 210.5150, 17.4230,
-1.8810

■ 238.8140, 18.0190,

-1.6690

253.7460, 3.5310,
-3.4210

57.4760, 13.1590,
-1.6970

57.4760, 13.1590,
-1.6970

54.9170, 16.2310,
-2.3050

60.0350, 10.0870,
-1.0890

51.7710, 19.5780,
-2.3900

63.1810, 6.7400,
-1.0040

49.2120, 22.6500,
-2.9980

65.7400, 3.6680,
-0.3960

46.6530, 25.7220,
-3.6060

68.2990, 0.5960,
0.2120

43.6210, 28.7480,
-3.3800

71.4450, -2.7510,
0.2970

■ 41.7630, 31.2240,
-4.2000

■ 73.8900, -5.5020,
0.5940

■ 76.4490, -8.5740,
1.2020

■ 79.5950, -11.9210,
1.2870

■ 82.1540, -14.9930,
1.8950

Harmonies

Analogous

The Analogous color harmony consists of three colors that are next to each other on the color wheel.



58.0790, 15.9550, 2.6990



57.4760, 13.1590, -1.6970



56.4320, 7.2910, -5.4850

Triad

The Triadic color harmony groups three colors that are evenly spaced from another and form a triangle on the color wheel.



57.4760, 13.1590, -1.6970



53.2040, -18.4300, -7.4060



58.9280, 0.5030, 7.4070

Complementary

The Complementary color scheme is a pair of colors which are on the opposite of each other on the color wheel.



57.4760, 13.1590, -1.6970



51.5240, -13.1590, 1.6970

Split Complementary

Split-complementary colors differ from the complementary color scheme. The scheme consists of three colors, the original color and two neighbors of the complement color.



57.2580, -9.3540, 4.3260



57.4760, 13.1590, -1.6970



53.3440, -21.6400, -4.2960

Square

The Square scheme is like the rectangle color scheme, but the four colors are evenly spaced on the color wheel.



57.4760, 13.1590, -1.6970



53.9830, -10.4980, -7.9860



55.4310, -17.3310, 0.2130



58.6470, 8.6640, 8.1840

Rectangle

The Rectangle color scheme consists of four colors that form a rectangle on the color wheel.



57.4760, 13.1590, -1.6970



55.8550, 1.6060, -7.0820



55.4310, -17.3310, 0.2130



58.5470, -2.7980, 6.6580

Sweetspot

The Sweet Spot groups the original color and five complimentary colors.



57.4760, 13.1590, -1.6970



84.8110, 4.9060, -0.8060



50.2670, 12.7900, 10.5020



42.8540, 3.3470, -0.0850



173.0000, -0.0000, 0.0000



46.0000, 0.0000, -0.0000

Same Dimension

The Same Dimension uses a secret algorithm to generate beautiful new colors.



57.4760, 13.1590, -1.6970



71.6570, 19.8990, -2.7010



65.6940, 9.3090, -9.0190



34.3700, 1.8340, -0.1980



59.5380, 44.9790, -5.6850



136.5520, 103.1170, -13.0670

Inverse Universe

The Inverse Universe completely reimagines the original color for something new.



51.5240, -13.1590, 1.6970



62.3430, -19.8990, 2.7010



43.6050, -8.7130, 9.2310



33.6300, -1.8340, 0.1980



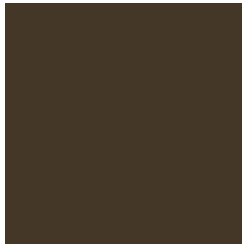
39.4620, -44.9790, 5.6850



90.4480, -103.1170, 13.0670

Previews

White Background



This preview shows how the YIQ color 57.4760, 13.1590, -1.6970 looks on a white background.

Color Contrast Check

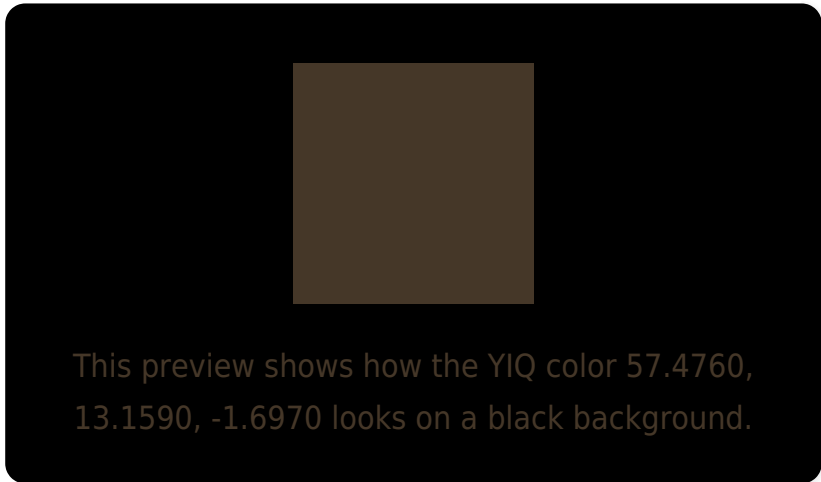
Large Text (above 18pt) WCAG AA ✓ Pass

Any Text WCAG AA ✓ Pass

Large Text (above 18pt) WCAG AAA ✓ Pass

Any Text WCAG AAA ✓ Pass

Black Background



Color Contrast Check

Large Text (above 18pt) WCAG AA × Fail

Any Text WCAG AA × Fail

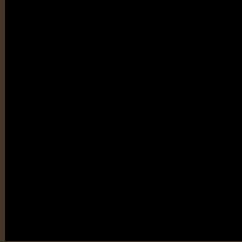
Large Text (above 18pt) WCAG AAA × Fail

Any Text WCAG AAA × Fail

If you want to check with other color combinations, try the [Color Contrast Checker](#).

YIQ 57.4760, 13.1590, -1.6970

Background



This preview shows how black text looks on a background with the YIQ color 57.4760, 13.1590, -1.6970.



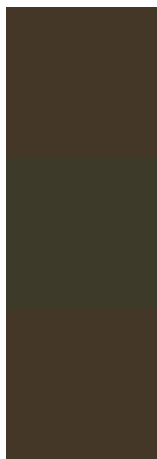
This preview shows how white text looks on a background with the YIQ color 57.4760, 13.1590,

-1.6970.

Color Blindness Simulation

Color vision deficiency is a very complex topic, and I could not describe the different causes any better than Wikipedia does, so if you want to learn more, you should check out their [article about color blindness](#).

Dichromacy



Original Color

57.4760, 13.1590, -1.6970

Protanopia

57.2580, 7.8410, -4.4390

Deuteranopia

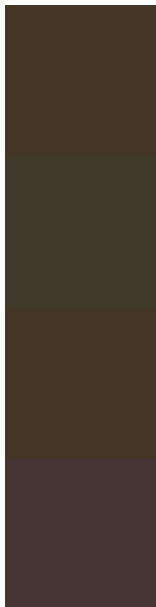
57.4760, 13.1590, -1.6970



Tritanopia

58.8380, 9.4440, 5.0600

Trichromacy



Original Color

57.4760, 13.1590, -1.6970

Protanomaly

57.5680, 9.9040, -3.2800

Deuteranomaly

57.4760, 13.1590, -1.6970

Tritanomaly

58.4420, 10.4990, 2.4590

Monochromacy



Original Color

57.4760, 13.1590, -1.6970

Achromatopsia

57.0000, 0.0000, 0.0000

Achromatomaly

56.9250, 4.5850, -0.4950

CSS Examples

Text

The CSS property to change the color of the text to YIQ 57.4760, 13.1590, -1.6970 is called "color". The color property can be set on classes, ids or directly on the HTML element.

This example shows how text in the color `rgb(69, 55, 40)` looks like.

```
.text, #text, p{  
    color:rgb(69, 55, 40)  
}
```

If you want to add a text shadow in that color use the text-shadow property, you can generate a text shadow directly with our [CSS Text Shadow Generator](#).

Here you see how black text with a 4 pixel rgb(69, 55, 40) colored shadow looks like.

```
.shadow{ text-shadow: 4px 4px 2px rgb(69, 55, 40) }
```

Border

The CSS property to change the border of an element to YIQ 57.4760, 13.1590, -1.6970 is called "border". The border property can be set on classes, ids or directly on the HTML element.

This example shows the color as border, it can be applied via the CSS property "border" or "border-color".

```
.border, #border, table{ border:4px solid rgb(69, 55, 40) }
```


If only the border color should be changed use the property `border-color`.

```
.border{ border-color:rgb(69, 55, 40) }
```

If you want to add a box shadow in that color use:

Here you see how a box with a 4 pixel `rgb(69, 55, 40)` colored shadow looks like.

```
.boxshadow{ -moz-box-shadow:4px 4px 4px  
4px rgb(69, 55, 40); -webkit-box-  
shadow:4px 4px 4px 4px rgb(69, 55, 40);  
box-shadow:4px 4px 4px 4px rgb(69, 55, 40)  
}
```

Background

The CSS property to change the background color of an element to YIQ 57.4760, 13.1590, -1.6970 is called "background". The background property can be set on classes, ids or directly on the HTML element.

```
.background, #background, body{  
background: rgb(69, 55, 40) }
```

If only the background color should be changed can be used:

```
.background{ background-color: rgb(69, 55,  
40) }
```

This example shows the color as background, it is applied via the CSS property "background".

To optimize and compress your CSS code, you can use our [online CSS compressor and optimizer](#) based on csstidy. If you want to create a linear or radial gradient as background or border, check our [CSS Gradient Generator](#).

Hey! You found this booklet interesting? Support Converting Colors with the new Membership Option!

The pro membership hides all ads, plus gives you double the colors in the color bucket, and more awesome pro features!

[Learn more, Memberships starting at \\$2.50/m!](#)

**Follow me
on Twitter!**

@ConvertingColor