

# Converting Colors

YIQ(57.5960, 21.8690, 5.6530)

Have a look what the booklet for  
YIQ(57.5960, 21.8690, 5.6530)  
contains.

<b>YIQ(57.5960, 21.8690, 5.6530)</b> .....	3
<b><i>Conversions</i></b> .....	4
<b><i>Details</i></b> .....	6
<b><i>Harmonies</i></b> .....	12
<b><i>Previews</i></b> .....	24
<b><i>Color Blindness Simulation</i></b> .....	28
<b><i>CSS Examples</i></b> .....	31

# Color

**YIQ(57.5960, 21.8690,  
5.6530)**

# Conversions

## Conversions Part 1

Format	Color
Hex	52302B
RGB	82, 48, 43
RGB Percent	32%, 19%, 17%
CMY	0.6784, 0.8118, 0.8313
CMYK	0.00, 0.41, 0.48, 0.68
HSL	8°, 31%, 25%
HSV	8°, 48%, 32%
XYZ	4.9742, 4.0821, 2.8135
YIQ	57.5960, 21.8690, 5.6530

# Conversions

## Conversions Part 2

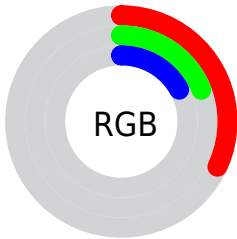
<b>Format</b>	<b>Color</b>
<b>R<sub>Y</sub>B</b>	82, 49, 43
Decimal	5386283
CIE Lab	23.94, 14.87, 9.74
CIE LCh	24, 17.770, 33.221
Yxy	4.0821, 0.4191, 0.3439
Android (android.graphics.Color)	4283576363 (0xFF52302B)
YUV	57.5960, -7.1958, 21.4023
Hunter-Lab	20.2041, 8.5895, 5.8866

# Details

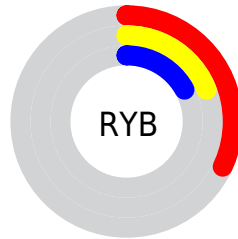
The YIQ color **57.5960, 21.8690, 5.6530** is a dark color, and the websafe version is hex **663333**. A complement of this color would be **67.4040, -21.8690, -5.6530**, and the grayscale version is **58.0000, -0.0000, 0.0000**.

A 20% lighter version of the original color is **105.5640, 24.8950, 5.8790**, and **12.2370, 21.5020, 6.7980** is the 20% darker color. If you saturate the color by 10%, you get **52.5750, 26.3620, 6.8260**, and if you desaturate by 10%, it is **62.6170, 17.3760, 4.4800**.

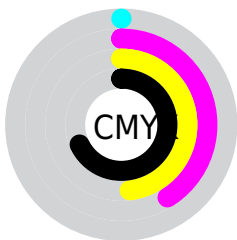
# Distribution



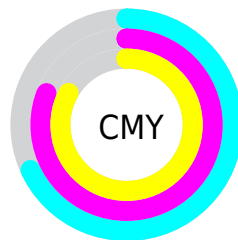
- Red (32%)
- Green (19%)
- Blue (17%)



- Red (32%)
- Yellow (19%)
- Blue (17%)



- Cyan (0%)
- Magenta (41%)
- Yellow (48%)
- Black (68%)



- Cyan (68%)
- Magenta (81%)
- Yellow (83%)

# Brightness & Saturation Gradients

These gradients show how the YIQ color 57.5960, 21.8690, 5.6530 changes by changing the brightness by 10 percent. The first figure shows a shift by +10% for each color and the second figure -10%.

Similar to the brightness gradients but the following saturation gradients show a change of the YIQ color 57.5960, 21.8690, 5.6530 by changing the saturation by 10% instead.



■ 57.5960, 21.8690,  
5.6530

■ 57.5960, 21.8690,  
5.6530

■ 255.0000, -0.0000,  
-0.0000

■ 35.8130, 19.7600,  
5.3280

■ 104.9770, 25.1700,  
6.4020

■ 12.2370, 21.5020,  
6.7980

■ 130.5750, 26.3620,  
6.8260

■ 0.0000, 0.0000,  
0.0000

■ 156.7600, 27.2790,  
6.7270

■ 184.0590, 27.8750,  
6.9390

■ 211.6570, 29.0670,  
7.3630

■ 234.5740, 18.9350,

3.7590

254.2020, 2.2470,  
-2.1770

57.5960, 21.8690,  
5.6530

57.5960, 21.8690,  
5.6530

52.5750, 26.3620,  
6.8260

62.6170, 17.3760,  
4.4800

47.5540, 30.8550,  
7.9990

67.6380, 12.8830,  
3.3070

42.4190, 35.6690,  
8.8610

72.7730, 8.0690,  
2.4450

36.8110, 40.4370,  
10.5570

78.3810, 3.3010,  
0.7490

31.7900, 44.9300,  
11.7300

83.4020, -1.1920,  
-0.4240

■ 30.3880, 46.1220,  
12.1540

■ 88.4230, -5.6850,  
-1.5970

■ 93.4440, -10.1780,  
-2.7700

■ 98.5790, -14.9920,  
-3.6320

■ 103.6000,  
-19.4850, -4.8050

# Harmonies

## Analogous

The Analogous color harmony consists of three colors that are next to each other on the color wheel.



58.4910, 17.9710, 10.2190



57.5960, 21.8690, 5.6530



56.7110, 19.8070, -1.0330

# Triad

The Triadic color harmony groups three colors that are evenly spaced from another and form a triangle on the color wheel.



57.5960, 21.8690, 5.6530



52.2770, -11.5060, -11.7460



55.4680, -18.7530, 3.9590

# Complementary

The Complementary color scheme is a pair of colors which are on the opposite of each other on the color wheel.



57.5960, 21.8690, 5.6530



67.4040, -21.8690, -5.6530

# Split Complementary

Split-complementary colors differ from the complementary color scheme. The scheme consists of three colors, the original color and two neighbors of the complement color.



49.9990, -33.7900, -4.3660



57.5960, 21.8690, 5.6530



48.6650, -27.2780, -12.2540

# Square

The Square scheme is like the rectangle color scheme, but the four colors are evenly spaced on the color wheel.



57.5960, 21.8690, 5.6530



54.0460, 2.3860, -10.2060



45.9610, -39.7950, -11.1790



58.0570, -4.1740, 9.5700



# Rectangle

The Rectangle color scheme consists of four colors that form a rectangle on the color wheel.



57.5960, 21.8690, 5.6530



56.0370, 15.7730, -5.0190



45.9610, -39.7950, -11.1790



53.6630, -23.7960, 1.7400

# Sweetspot

The Sweet Spot groups the original color and five complimentary colors.



57.5960, 21.8690, 5.6530



97.6590, 8.3900, 2.1340



58.5370, 12.3300, 18.8420



48.1640, 5.4100, 1.0740



181.0000, -0.0000, 0.0000



54.0000, -0.0000, 0.0000



# Same Dimension

The Same Dimension uses a secret algorithm to generate beautiful new colors.



57.5960, 21.8690, 5.6530



68.9350, 34.1560, 8.7480



68.7490, 16.6440, -4.2840



38.1960, 2.3840, 0.8480



39.0260, 59.0050, 15.4610



86.9780, 130.0220, 33.4940



# Inverse Universe

The Inverse Universe completely reimagines the original color for something new.



67.4040, -21.8690, -5.6530



84.0650, -34.1560, -8.7480



56.2510, -16.6440, 4.2840



39.2170, -2.1090, -0.3250



65.3870, -58.7300, -14.9380

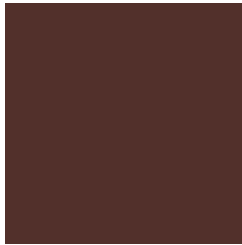


145.6090, -130.2970, -34.0170



# Previews

## White Background



This preview shows how the YIQ color 57.5960, 21.8690, 5.6530 looks on a white background.

## Color Contrast Check

Large Text (above 18pt) WCAG AA ✓ Pass

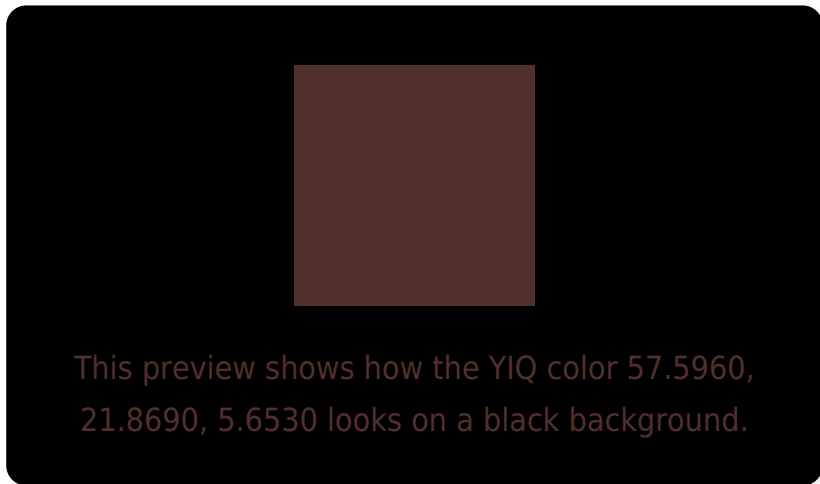
Any Text WCAG AA ✓ Pass

Large Text (above 18pt) WCAG AAA ✓ Pass

Any Text WCAG AAA ✓ Pass



# Black Background



## Color Contrast Check

Large Text (above 18pt) WCAG AA × Fail

Any Text WCAG AA × Fail

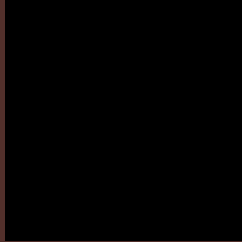
Large Text (above 18pt) WCAG AAA × Fail

Any Text WCAG AAA × Fail

If you want to check with other color combinations, try the [Color Contrast Checker](#).

**YIQ 57.5960, 21.8690, 5.6530**

## **Background**



This preview shows how black text looks on a background with the YIQ color 57.5960, 21.8690, 5.6530.



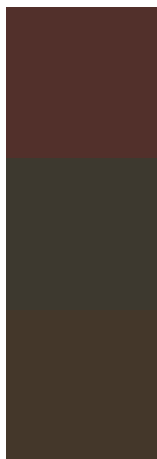
This preview shows how white text looks on a background with the YIQ color 57.5960, 21.8690,



# Color Blindness Simulation

Color vision deficiency is a very complex topic, and I could not describe the different causes any better than Wikipedia does, so if you want to learn more, you should check out their [article about color blindness](#).

## Dichromacy



### Original Color

57.5960, 21.8690, 5.6530

### Protanopia

57.0560, 5.5940, -2.2620

### Deuteranopia

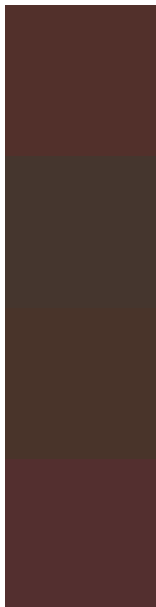
57.4050, 11.9210, -1.2870



## Tritanopia

58.1060, 20.4930, 8.5650

# Trichromacy



## Original Color

57.5960, 21.8690, 5.6530

## Protanomaly

57.5730, 11.5080, 0.6920

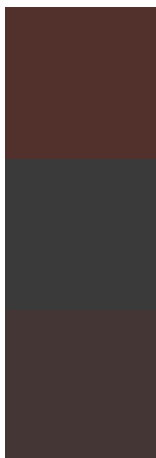
## Deuteranomaly

57.1390, 15.7260, 1.3420

## Tritanomaly

57.7640, 21.4560, 7.6320

# Monochromacy



## Original Color

57.5960, 21.8690, 5.6530

## Achromatopsia

58.0000, -0.0000, 0.0000

## Achromatomaly

57.7730, 8.0690, 2.4450

# CSS Examples

## Text

The CSS property to change the color of the text to YIQ 57.5960, 21.8690, 5.6530 is called "color". The color property can be set on classes, ids or directly on the HTML element.

This example shows how text in the color `rgb(82, 48, 43)` looks like.

```
.text, #text, p{  
    color:rgb(82, 48, 43)  
}
```

If you want to add a text shadow in that color use the text-shadow property, you can generate a text shadow directly with our [CSS Text Shadow Generator](#).

Here you see how black text with a 4 pixel rgb(82, 48, 43) colored shadow looks like.

```
.shadow{ text-shadow: 4px 4px 2px rgb(82, 48, 43) }
```

## Border

The CSS property to change the border of an element to YIQ 57.5960, 21.8690, 5.6530 is called "border". The border property can be set on classes, ids or directly on the HTML element.

This example shows the color as border, it can be applied via the CSS property "border" or "border-color".

```
.border, #border, table{ border:4px solid rgb(82, 48, 43) }
```



If only the border color should be changed use the property border-color.

```
.border{ border-color:rgb(82, 48, 43) }
```

If you want to add a box shadow in that color use:

Here you see how a box with a 4 pixel rgb(82, 48, 43) colored shadow looks like.

```
.boxshadow{ -moz-box-shadow:4px 4px 4px  
4px rgb(82, 48, 43); -webkit-box-  
shadow:4px 4px 4px 4px rgb(82, 48, 43);  
box-shadow:4px 4px 4px 4px rgb(82, 48, 43)  
}
```

# Background

The CSS property to change the background color of an element to YIQ 57.5960, 21.8690, 5.6530 is called "background". The background property can be set on classes, ids or directly on the HTML element.

```
.background, #background, body{  
background: rgb(82, 48, 43) }
```

If only the background color should be changed can be used:

```
.background{ background-color: rgb(82, 48,  
43) }
```

This example shows the color as background, it is applied via the CSS property "background".

To optimize and compress your CSS code, you can use our [online CSS compressor and optimizer](#) based on csstidy. If you want to create a linear or radial gradient as background or border, check our [CSS Gradient Generator](#).

Hey! You found this booklet interesting? Support Converting Colors with the new Membership Option!

The pro membership hides all ads, plus gives you double the colors in the color bucket, and more awesome pro features!

**[Learn more, Memberships starting at \\$2.50/m!](#)**

**Follow me  
on Twitter!**

@ConvertingColor