

Converting Colors

YIQ(58.5970, 29.2960, 8.7200)

Have a look what the booklet for
YIQ(58.5970, 29.2960, 8.7200)
contains.

YIQ(58.5970, 29.2960, 8.7200)	3
<i>Conversions</i>	4
<i>Details</i>	6
<i>Harmonies</i>	12
<i>Previews</i>	24
<i>Color Blindness Simulation</i>	28
<i>CSS Examples</i>	31

Color

**YIQ(58.5970, 29.2960,
8.7200)**

Conversions

Conversions Part 1

Format	Color
Hex	5C2D29
RGB	92, 45, 41
RGB Percent	36%, 18%, 16%
CMY	0.6391, 0.8236, 0.8391
CMYK	0.00, 0.51, 0.55, 0.64
HSL	5°, 38%, 26%
HSV	5°, 55%, 36%
XYZ	5.7548, 4.3123, 2.6297
YIQ	58.5970, 29.2960, 8.7200

Conversions

Conversions Part 2

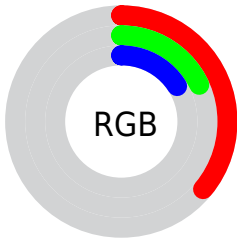
Format	Color
R_{YB}	92, 45, 41
Decimal	6040873
CIE Lab	24.68, 21.00, 12.32
CIE LCh	25, 24.349, 30.407
Yxy	4.3123, 0.4532, 0.3396
Android (android.graphics.Color)	4284230953 (0xFF5C2D29)
YUV	58.5970, -8.6753, 29.2944
Hunter-Lab	20.7661, 13.1262, 7.0283

Details

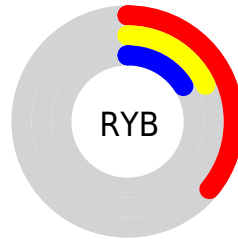
The YIQ color **58.5970, 29.2960, 8.7200** is a dark color, and the websafe version is hex **663333**. A complement of this color would be **74.4030, -29.2960, -8.7200**, and the grayscale version is **59.0000, 0.0000, -0.0000**.

A 20% lighter version of the original color is **107.1630, 33.5140, 9.3700**, and **13.1560, 26.2240, 9.3280** is the 20% darker color. If you saturate the color by 10%, you get **52.2880, 34.6600, 10.6280**, and if you desaturate by 10%, it is **64.3190, 24.2070, 7.3350**.

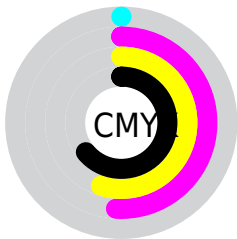
Distribution



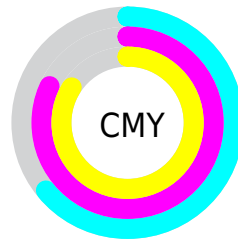
- Red (36%)
- Green (18%)
- Blue (16%)



- Red (36%)
- Yellow (18%)
- Blue (16%)



- Cyan (0%)
- Magenta (51%)
- Yellow (55%)
- Black (64%)



- Cyan (64%)
- Magenta (82%)
- Yellow (84%)

Brightness & Saturation Gradients

These gradients show how the YIQ color 58.5970, 29.2960, 8.7200 changes by changing the brightness by 10 percent. The first figure shows a shift by +10% for each color and the second figure -10%.

Similar to the brightness gradients but the following saturation gradients show a change of the YIQ color 58.5970, 29.2960, 8.7200 by changing the saturation by 10% instead.

■ 58.5970, 29.2960,
8.7200

■ 58.5970, 29.2960,
8.7200

255.0000, -0.0000,
-0.0000

■ 35.9280, 26.8660,
8.7060

■ 107.1630, 33.5140,
9.3700

■ 13.1560, 26.2240,
9.3280

■ 132.7610, 34.7060,
9.7940

■ 0.0000, 0.0000,
0.0000

■ 159.2450, 36.2190,
9.9070

■ 186.1420, 38.0070,
10.5430

■ 213.4300, 37.1360,
9.8080

■ 233.0580, 20.4480,

3.8720

■ 253.2730, 3.4850,
-2.5870

■ 58.5970, 29.2960,
8.7200

■ 58.5970, 29.2960,
8.7200

■ 52.2880, 34.6600,
10.6280

■ 64.3190, 24.2070,
7.3350

■ 46.5660, 39.7490,
12.0130

■ 70.6280, 18.8430,
5.4270

■ 40.7300, 45.1590,
13.0870

■ 76.4640, 13.4330,
4.3530

■ 34.4210, 50.5230,
14.9950

■ 82.7730, 8.0690,
2.4450

■ 31.6170, 52.9070,
15.8430

■ 88.4950, 2.9800,
1.0600

■ 94.8040, -2.3840,
-0.8480

■ 100.5260, -7.4730,
-2.2330

■ 106.9490,
-13.1580, -3.8300

■ 112.6710,
-18.2470, -5.2150

Harmonies

Analogous

The Analogous color harmony consists of three colors that are next to each other on the color wheel.



59.4750, 24.0680, 15.3640



58.5970, 29.2960, 8.7200



58.1310, 27.3720, -0.4680

Triad

The Triadic color harmony groups three colors that are evenly spaced from another and form a triangle on the color wheel.



58.5970, 29.2960, 8.7200



51.3750, -14.8980, -16.3540



53.5250, -32.0950, 3.4650

Complementary

The Complementary color scheme is a pair of colors which are on the opposite of each other on the color wheel.



58.5970, 29.2960, 8.7200



74.4030, -29.2960, -8.7200

Split Complementary

Split-complementary colors differ from the complementary color scheme. The scheme consists of three colors, the original color and two neighbors of the complement color.



48.4150, -46.7650, -6.0050



58.5970, 29.2960, 8.7200



46.5280, -37.3180, -17.5260

Square

The Square scheme is like the rectangle color scheme, but the four colors are evenly spaced on the color wheel.



58.5970, 29.2960, 8.7200



54.8950, 4.1290, -14.2630



48.6940, -43.4170, -11.6170



59.8980, -7.9800, 12.4680

Rectangle

The Rectangle color scheme consists of four colors that form a rectangle on the color wheel.



58.5970, 29.2960, 8.7200



57.5060, 21.6420, -6.7580



48.6940, -43.4170, -11.6170



48.1210, -45.7570, -2.2450

Sweetspot

The Sweet Spot groups the original color and five complimentary colors.



58.5970, 29.2960, 8.7200



106.4530, 11.9660, 3.4060



61.7210, 14.9880, 25.7400



53.1750, 6.8770, 2.0210



189.0000, -0.0000, -0.0000



61.0000, 0.0000, -0.0000

Same Dimension

The Same Dimension uses a secret algorithm to generate beautiful new colors.



58.5970, 29.2960, 8.7200



68.1430, 45.4340, 13.6100



73.2720, 22.4210, -4.3550



43.0820, 2.7050, 0.5370



37.5860, 63.3600, 19.1360



81.4290, 136.3020, 40.8300

Inverse Universe

The Inverse Universe completely reimagines the original color for something new.



74.4030, -29.2960, -8.7200



92.8570, -45.4340, -13.6100



59.7280, -22.4210, 4.3550



44.5050, -2.9800, -1.0600



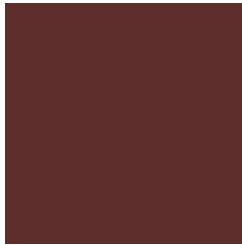
71.8270, -63.0850, -18.6130



155.5710, -136.3020, -40.8300

Previews

White Background



This preview shows how the YIQ color 58.5970, 29.2960, 8.7200 looks on a white background.

Color Contrast Check

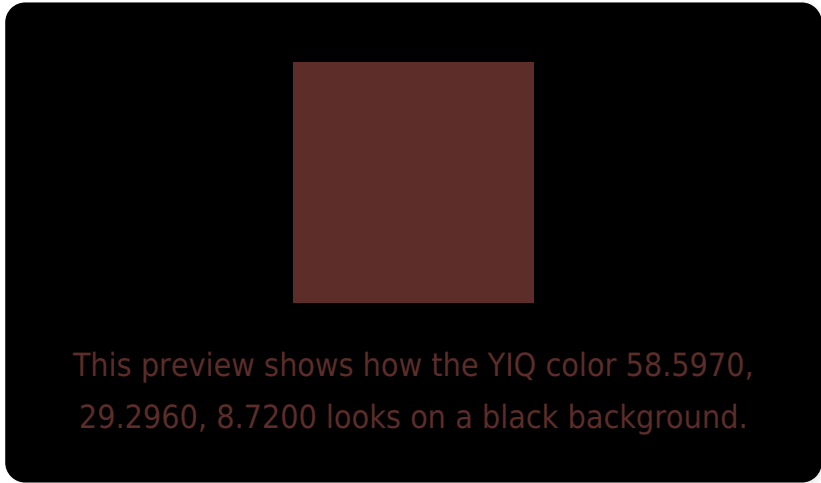
Large Text (above 18pt) WCAG AA ✓ Pass

Any Text WCAG AA ✓ Pass

Large Text (above 18pt) WCAG AAA ✓ Pass

Any Text WCAG AAA ✓ Pass

Black Background



Color Contrast Check

Large Text (above 18pt) WCAG AA × Fail

Any Text WCAG AA × Fail

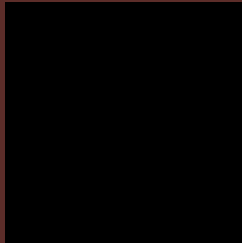
Large Text (above 18pt) WCAG AAA × Fail

Any Text WCAG AAA × Fail

If you want to check with other color combinations, try the [Color Contrast Checker](#).

YIQ 58.5970, 29.2960, 8.7200

Background



This preview shows how black text looks on a background with the YIQ color 58.5970, 29.2960, 8.7200.



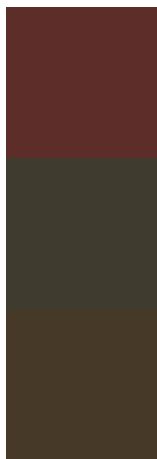
This preview shows how white text looks on a background with the YIQ color 58.5970, 29.2960,

8.7200.

Color Blindness Simulation

Color vision deficiency is a very complex topic, and I could not describe the different causes any better than Wikipedia does, so if you want to learn more, you should check out their [article about color blindness](#).

Dichromacy



Original Color

58.5970, 29.2960, 8.7200

Protanopia

58.8280, 6.2360, -2.8840

Deuteranopia

59.1340, 14.1220, -2.6300



Tritanopia

58.6940, 27.6450, 11.1090

Trichromacy



Original Color

58.5970, 29.2960, 8.7200

Protanomaly

58.9540, 14.8090, 1.4410

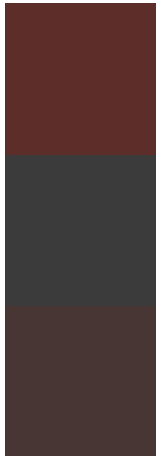
Deuteranomaly

59.2920, 19.6690, 1.4690

Tritanomaly

58.4660, 28.2870, 10.4870

Monochromacy



Original Color

58.5970, 29.2960, 8.7200

Achromatopsia

59.0000, 0.0000, -0.0000

Achromatomaly

58.8550, 10.7740, 2.9820

CSS Examples

Text

The CSS property to change the color of the text to YIQ 58.5970, 29.2960, 8.7200 is called "color". The color property can be set on classes, ids or directly on the HTML element.

This example shows how text in the color `rgb(92, 45, 41)` looks like.

```
.text, #text, p{  
    color:rgb(92, 45, 41)  
}
```

If you want to add a text shadow in that color use the text-shadow property, you can generate a text shadow directly with our [CSS Text Shadow Generator](#).

Here you see how black text with a 4 pixel rgb(92, 45, 41) colored shadow looks like.

```
.shadow{ text-shadow: 4px 4px 2px rgb(92, 45, 41) }
```

Border

The CSS property to change the border of an element to YIQ 58.5970, 29.2960, 8.7200 is called "border". The border property can be set on classes, ids or directly on the HTML element.

This example shows the color as border, it can be applied via the CSS property "border" or "border-color".

```
.border, #border, table{ border:4px solid rgb(92, 45, 41) }
```


If only the border color should be changed use the property `border-color`.

```
.border{ border-color:rgb(92, 45, 41) }
```

If you want to add a box shadow in that color use:

Here you see how a box with a 4 pixel `rgb(92, 45, 41)` colored shadow looks like.

```
.boxshadow{ -moz-box-shadow:4px 4px 4px  
4px rgb(92, 45, 41); -webkit-box-  
shadow:4px 4px 4px 4px rgb(92, 45, 41);  
box-shadow:4px 4px 4px 4px rgb(92, 45, 41)  
}
```

Background

The CSS property to change the background color of an element to YIQ 58.5970, 29.2960, 8.7200 is called "background". The background property can be set on classes, ids or directly on the HTML element.

```
.background, #background, body{  
background: rgb(92, 45, 41) }
```

If only the background color should be changed can be used:

```
.background{ background-color: rgb(92, 45,  
41) }
```

This example shows the color as background, it is applied via the CSS property "background".

To optimize and compress your CSS code, you can use our [online CSS compressor and optimizer](#) based on csstidy. If you want to create a linear or radial gradient as background or border, check our [CSS Gradient Generator](#).

Hey! You found this booklet interesting? Support Converting Colors with the new Membership Option!

The pro membership hides all ads, plus gives you double the colors in the color bucket, and more awesome pro features!

[Learn more, Memberships starting at \\$2.50/m!](#)

**Follow me
on Twitter!**

@ConvertingColor