

Converting Colors

YIQ(58.6570, 29.0670, 7.3630)

Have a look what the booklet for
YIQ(58.6570, 29.0670, 7.3630)
contains.

YIQ(58.6570, 29.0670, 7.3630)	3
<i>Conversions</i>	4
<i>Details</i>	6
<i>Harmonies</i>	12
<i>Previews</i>	24
<i>Color Blindness Simulation</i>	28
<i>CSS Examples</i>	31

Color

**YIQ(58.6570, 29.0670,
7.3630)**

Conversions

Conversions Part 1

Format	Color
Hex	5B2E27
RGB	91, 46, 39
RGB Percent	36%, 18%, 15%
CMY	0.6430, 0.8197, 0.8469
CMYK	0.00, 0.49, 0.57, 0.64
HSL	8°, 40%, 26%
HSV	8°, 57%, 36%
XYZ	5.6599, 4.3247, 2.4586
YIQ	58.6570, 29.0670, 7.3630

Conversions

Conversions Part 2

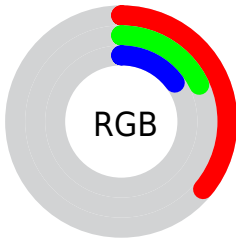
Format	Color
RYB	91, 47, 39
Decimal	5975591
CIELab	24.72, 19.75, 13.67
CIELCh	25, 24.019, 34.698
Yxy	4.3247, 0.4549, 0.3476
Android (android.graphics.Color)	4284165671 (0xFF5B2E27)
YUV	58.6570, -9.6909, 28.3648
Hunter-Lab	20.7959, 12.1890, 7.5476

Details

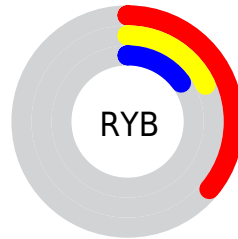
The YIQ color **58.6570, 29.0670, 7.3630** is a dark color, and the websafe version is hex **663333**. A complement of this color would be **71.3430, -29.0670, -7.3630**, and the grayscale version is **59.0000, 0.0000, -0.0000**.

A 20% lighter version of the original color is **107.2230, 33.2850, 8.0130**, and **13.4440, 25.3530, 8.5930** is the 20% darker color. If you saturate the color by 10%, you get **52.9350, 34.1560, 8.7480**, and if you desaturate by 10%, it is **64.3790, 23.9780, 5.9780**.

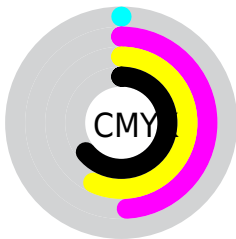
Distribution



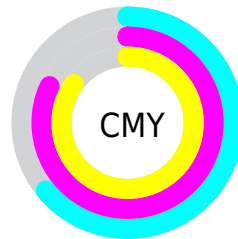
- Red (36%)
- Green (18%)
- Blue (15%)



- Red (36%)
- Yellow (18%)
- Blue (15%)



- Cyan (0%)
- Magenta (49%)
- Yellow (57%)
- Black (64%)



- Cyan (64%)
- Magenta (82%)
- Yellow (85%)

Brightness & Saturation Gradients

These gradients show how the YIQ color 58.6570, 29.0670, 7.3630 changes by changing the brightness by 10 percent. The first figure shows a shift by +10% for each color and the second figure -10%.

Similar to the brightness gradients but the following saturation gradients show a change of the YIQ color 58.6570, 29.0670, 7.3630 by changing the saturation by 10% instead.

■ 58.6570, 29.0670,
7.3630

■ 58.6570, 29.0670,
7.3630

■ 255.0000, -0.0000,
-0.0000

■ 35.9880, 26.6370,
7.3490

■ 107.2230, 33.2850,
8.0130

■ 13.4440, 25.3530,
8.5930

■ 132.7070, 34.7980,
8.1260

■ 0.0000, 0.0000,
0.0000

■ 159.3050, 35.9900,
8.5500

■ 186.2020, 37.7780,
9.1860

■ 213.7890, 37.5030,
8.6630

■ 233.3030, 21.1360,

2.4160

■ 253.0450, 4.1270,
-3.2090

■ 58.6570, 29.0670,
7.3630

■ 58.6570, 29.0670,
7.3630

■ 52.9350, 34.1560,
8.7480

■ 64.3790, 23.9780,
5.9780

■ 47.2130, 39.2450,
10.1330

■ 70.1010, 18.8890,
4.5930

■ 41.4910, 44.3340,
11.5180

■ 75.8230, 13.8000,
3.2080

■ 35.7690, 49.4230,
12.9030

■ 81.5450, 8.7110,
1.8230

■ 34.2530, 50.9360,
13.0160

■ 86.7940, 3.5760,
1.2720

■ 92.5160, -1.5130,
-0.1130

■ 98.2380, -6.6020,
-1.4980

■ 103.9600,
-11.6910, -2.8830

■ 109.6820,
-16.7800, -4.2680

Harmonies

Analogous

The Analogous color harmony consists of three colors that are next to each other on the color wheel.



59.2470, 24.7100, 14.7420



58.6570, 29.0670, 7.3630



58.0060, 26.2260, -1.7260

Triad

The Triadic color harmony groups three colors that are evenly spaced from another and form a triangle on the color wheel.



58.6570, 29.0670, 7.3630



51.1080, -18.5200, -16.7920



55.6180, -27.9230, 4.9490

Complementary

The Complementary color scheme is a pair of colors which are on the opposite of each other on the color wheel.



58.6570, 29.0670, 7.3630



71.3430, -29.0670, -7.3630

Split Complementary

Split-complementary colors differ from the complementary color scheme. The scheme consists of three colors, the original color and two neighbors of the complement color.



48.5290, -47.0860, -5.6940



58.6570, 29.0670, 7.3630



46.8700, -38.2810, -16.5930

Square

The Square scheme is like the rectangle color scheme, but the four colors are evenly spaced on the color wheel.



58.6570, 29.0670, 7.3630



55.1120, 2.0200, -14.5880



48.3350, -43.7840, -10.4720



60.3930, -5.0000, 13.5280

Rectangle

The Rectangle color scheme consists of four colors that form a rectangle on the color wheel.



58.6570, 29.0670, 7.3630



57.4950, 20.1750, -7.7050



48.3350, -43.7840, -10.4720



52.0080, -38.0090, 0.5110

Sweetspot

The Sweet Spot groups the original color and five complimentary colors.



58.6570, 29.0670, 7.3630



104.7410, 11.0950, 2.6710



59.6780, 16.5470, 25.0190



51.1750, 6.8770, 2.0210



186.0000, -0.0000, -0.0000



59.0000, 0.0000, -0.0000

Same Dimension

The Same Dimension uses a secret algorithm to generate beautiful new colors.



58.6570, 29.0670, 7.3630



66.6760, 45.2510, 11.4190



73.9190, 21.9170, -6.2350



43.0820, 2.7050, 0.5370



41.6950, 61.4350, 15.4750



89.6470, 132.4520, 33.5080

Inverse Universe

The Inverse Universe completely reimagines the original color for something new.



71.3430, -29.0670, -7.3630



86.3240, -45.2510, -11.4190



56.0810, -21.9170, 6.2350



43.9180, -2.7050, -0.5370



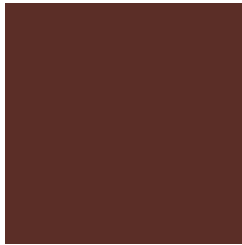
68.3050, -61.4350, -15.4750



147.3530, -132.4520, -33.5080

Previews

White Background



This preview shows how the YIQ color 58.6570, 29.0670, 7.3630 looks on a white background.

Color Contrast Check

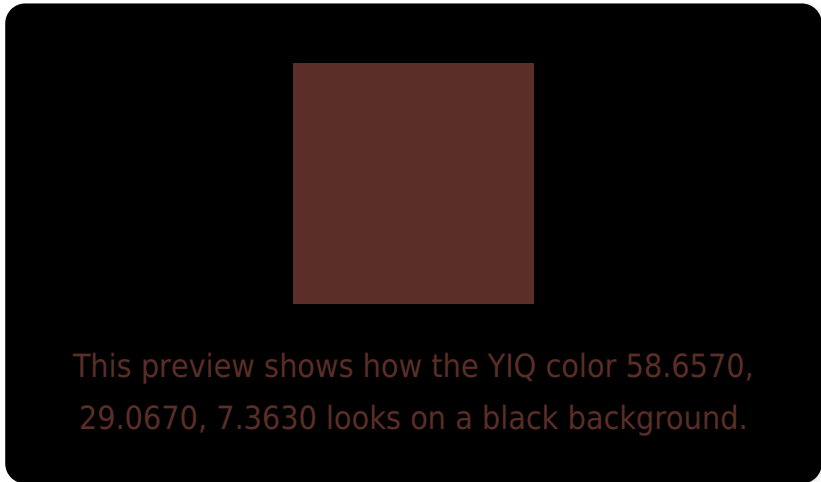
Large Text (above 18pt) WCAG AA ✓ Pass

Any Text WCAG AA ✓ Pass

Large Text (above 18pt) WCAG AAA ✓ Pass

Any Text WCAG AAA ✓ Pass

Black Background



Color Contrast Check

Large Text (above 18pt) WCAG AA × Fail

Any Text WCAG AA × Fail

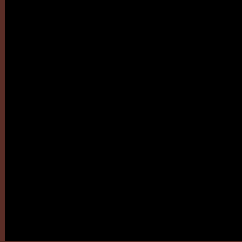
Large Text (above 18pt) WCAG AAA × Fail

Any Text WCAG AAA × Fail

If you want to check with other color combinations, try the [Color Contrast Checker](#).

YIQ 58.6570, 29.0670, 7.3630

Background



This preview shows how black text looks on a background with the YIQ color 58.6570, 29.0670, 7.3630.

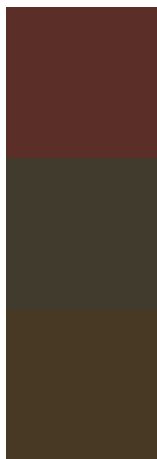


This preview shows how white text looks on a background with the YIQ color 58.6570, 29.0670,

Color Blindness Simulation

Color vision deficiency is a very complex topic, and I could not describe the different causes any better than Wikipedia does, so if you want to learn more, you should check out their [article about color blindness](#).

Dichromacy



Original Color

58.6570, 29.0670, 7.3630

Protanopia

58.8990, 7.4740, -3.2940

Deuteranopia

59.2050, 15.3600, -3.0400



Tritanopia

59.3950, 27.0490, 10.8970

Trichromacy



Original Color

58.6570, 29.0670, 7.3630

Protanomaly

58.7260, 15.4510, 0.8190

Deuteranomaly

59.0640, 20.3110, 0.8470

Tritanomaly

59.0530, 28.0120, 9.9640

Monochromacy



Original Color

58.6570, 29.0670, 7.3630

Achromatopsia

59.0000, 0.0000, -0.0000

Achromatomaly

58.8550, 10.7740, 2.9820

CSS Examples

Text

The CSS property to change the color of the text to YIQ 58.6570, 29.0670, 7.3630 is called "color". The color property can be set on classes, ids or directly on the HTML element.

This example shows how text in the color rgb(91, 46, 39) looks like.

```
.text, #text, p{  
    color:rgb(91, 46, 39)  
}
```

If you want to add a text shadow in that color use the text-shadow property, you can generate a text shadow directly with our [CSS Text Shadow Generator](#).

Here you see how black text with a 4 pixel rgb(91, 46, 39) colored shadow looks like.

```
.shadow{ text-shadow: 4px 4px 2px rgb(91, 46, 39) }
```

Border

The CSS property to change the border of an element to YIQ 58.6570, 29.0670, 7.3630 is called "border". The border property can be set on classes, ids or directly on the HTML element.

This example shows the color as border, it can be applied via the CSS property "border" or "border-color".

```
.border, #border, table{ border:4px solid rgb(91, 46, 39) }
```


If only the border color should be changed use the property `border-color`.

```
.border{ border-color:rgb(91, 46, 39) }
```

If you want to add a box shadow in that color use:

Here you see how a box with a 4 pixel `rgb(91, 46, 39)` colored shadow looks like.

```
.boxshadow{ -moz-box-shadow:4px 4px 4px  
4px rgb(91, 46, 39); -webkit-box-  
shadow:4px 4px 4px 4px rgb(91, 46, 39);  
box-shadow:4px 4px 4px 4px rgb(91, 46, 39)  
}
```

Background

The CSS property to change the background color of an element to YIQ 58.6570, 29.0670, 7.3630 is called "background". The background property can be set on classes, ids or directly on the HTML element.

```
.background, #background, body{  
background: rgb(91, 46, 39) }
```

If only the background color should be changed can be used:

```
.background{ background-color: rgb(91, 46,  
39) }
```

This example shows the color as background, it is applied via the CSS property "background".

To optimize and compress your CSS code, you can use our [online CSS compressor and optimizer](#) based on csstidy. If you want to create a linear or radial gradient as background or border, check our [CSS Gradient Generator](#).

Hey! You found this booklet interesting? Support Converting Colors with the new Membership Option!

The pro membership hides all ads, plus gives you double the colors in the color bucket, and more awesome pro features!

[Learn more, Memberships starting at \\$2.50/m!](#)

**Follow me
on Twitter!**

@ConvertingColor