

# Converting Colors

YIQ(58.8780, 21.1350, 7.9430)

Have a look what the booklet for  
YIQ(58.8780, 21.1350, 7.9430)  
contains.

<b>YIQ(58.8780, 21.1350, 7.9430)</b> .....	3
<b><i>Conversions</i></b> .....	4
<b><i>Details</i></b> .....	6
<b><i>Harmonies</i></b> .....	12
<b><i>Previews</i></b> .....	24
<b><i>Color Blindness Simulation</i></b> .....	28
<b><i>CSS Examples</i></b> .....	31

# Color

**YIQ(58.8780, 21.1350,  
7.9430)**

# Conversions

## Conversions Part 1

Format	Color
Hex	543031
RGB	84, 48, 49
RGB Percent	33%, 19%, 19%
CMY	0.6705, 0.8118, 0.8078
CMYK	0.00, 0.43, 0.42, 0.67
HSL	358°, 27%, 26%
HSV	358°, 43%, 33%
XYZ	5.2693, 4.2204, 3.4450
YIQ	58.8780, 21.1350, 7.9430

# Conversions

## Conversions Part 2

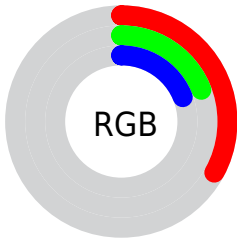
<b>Format</b>	<b>Color</b>
<b>RYB</b>	84, 48, 49
Decimal	5517361
CIELab	24.39, 16.57, 6.38
CIELCh	24, 17.754, 21.049
Yxy	4.2204, 0.4074, 0.3263
Android (android.graphics.Color)	4283707441 (0xFF543031)
YUV	58.8780, -4.8699, 22.0320
Hunter-Lab	20.5437, 9.8323, 4.4382

# Details

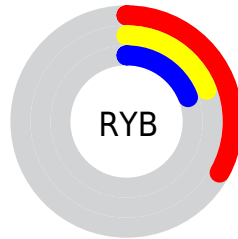
The YIQ color **58.8780, 21.1350, 7.9430** is a dark color, and the websafe version is hex **663333**. A complement of this color would be **73.1220, -21.1350, -7.9430**, and the grayscale version is **59.0000, 0.0000, -0.0000**.

A 20% lighter version of the original color is **106.9600, 23.8400, 8.4800**, and **12.9490, 22.3730, 7.5330** is the 20% darker color. If you saturate the color by 10%, you get **53.2700, 25.9030, 9.6390**, and if you desaturate by 10%, it is **64.4860, 16.3670, 6.2470**.

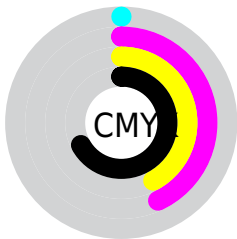
# Distribution



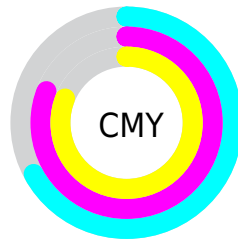
- Red (33%)
- Green (19%)
- Blue (19%)



- Red (33%)
- Yellow (19%)
- Blue (19%)



- Cyan (0%)
- Magenta (43%)
- Yellow (42%)
- Black (67%)



- Cyan (67%)
- Magenta (81%)
- Yellow (81%)

# Brightness & Saturation Gradients

These gradients show how the YIQ color 58.8780, 21.1350, 7.9430 changes by changing the brightness by 10 percent. The first figure shows a shift by +10% for each color and the second figure -10%.

Similar to the brightness gradients but the following saturation gradients show a change of the YIQ color 58.8780, 21.1350, 7.9430 by changing the saturation by 10% instead.



■ 58.8780, 21.1350,  
7.9430

■ 58.8780, 21.1350,  
7.9430

■ 255.0000, -0.0000,  
-0.0000

■ 36.3940, 19.6220,  
7.8300

■ 106.9600, 23.8400,  
8.4800

■ 12.9490, 22.3730,  
7.5330

■ 132.5580, 25.0320,  
8.9040

■ 0.0000, 0.0000,  
0.0000

■ 158.1560, 26.2240,  
9.3280

■ 185.4550, 26.8200,  
9.5400

■ 213.0530, 28.0120,  
9.9640

■ 235.9590, 16.4130,

5.4130

■ 58.8780, 21.1350,  
7.9430

■ 58.8780, 21.1350,  
7.9430

■ 53.2700, 25.9030,  
9.6390

■ 64.4860, 16.3670,  
6.2470

■ 47.0750, 30.9460,  
11.8580

■ 70.6810, 11.3240,  
4.0280

■ 41.4670, 35.7140,  
13.5540

■ 76.4030, 6.2350,  
2.6430

■ 35.1580, 41.0780,  
15.4620

■ 82.5980, 1.1920,  
0.4240

■ 29.5500, 45.8460,  
17.1580

■ 88.2060, -3.5760,  
-1.2720

■ 25.3440, 49.4220,  
18.4300

■ 93.8140, -8.3440,  
-2.9680

■ 100.0090,  
-13.3870, -5.1870

■ 105.6170,  
-18.1550, -6.8830

■ 111.8120,  
-23.1980, -9.1020

# Harmonies

## Analogous

The Analogous color harmony consists of three colors that are next to each other on the color wheel.



59.5770, 14.8530, 11.6610



58.8780, 21.1350, 7.9430



58.1890, 21.4570, 2.1050

# Triad

The Triadic color harmony groups three colors that are evenly spaced from another and form a triangle on the color wheel.



58.8780, 21.1350, 7.9430



54.2130, -5.4540, -11.2940



54.3640, -24.3920, 1.5280

# Complementary

The Complementary color scheme is a pair of colors which are on the opposite of each other on the color wheel.



58.8780, 21.1350, 7.9430



73.1220, -21.1350, -7.9430

# Split Complementary

Split-complementary colors differ from the complementary color scheme. The scheme consists of three colors, the original color and two neighbors of the complement color.



48.5530, -38.4660, -7.7300



58.8780, 21.1350, 7.9430



51.3730, -20.5840, -12.4240

# Square

The Square scheme is like the rectangle color scheme, but the four colors are evenly spaced on the color wheel.



58.8780, 21.1350, 7.9430



56.0250, 6.8790, -9.0330



47.2880, -36.4020, -12.0980



58.4800, -9.8590, 7.9730



# Rectangle

The Rectangle color scheme consists of four colors that form a rectangle on the color wheel.



58.8780, 21.1350, 7.9430



57.5860, 18.6610, -2.2910



47.2880, -36.4020, -12.0980



52.7330, -29.9850, -1.7370

# Sweetspot

The Sweet Spot groups the original color and five complimentary colors.



58.8780, 21.1350, 7.9430



99.5990, 8.6190, 3.4910



62.5690, 9.3040, 18.6160



49.6910, 5.3640, 1.9080



184.0000, 0.0000, -0.0000



56.0000, -0.0000, 0.0000



# Same Dimension

The Same Dimension uses a secret algorithm to generate beautiful new colors.



58.8780, 21.1350, 7.9430



70.8580, 33.0550, 12.1830



68.7430, 16.7810, -1.2590



38.1960, 2.3840, 0.8480



31.7370, 61.6170, 23.1930



70.1660, 136.0250, 51.3610



# Inverse Universe

The Inverse Universe completely reimagines the original color for something new.



58.8780, 21.1350, 7.9430



70.8580, 33.0550, 12.1830



63.2570, -16.7810, 1.2590



38.1960, 2.3840, 0.8480



31.7370, 61.6170, 23.1930

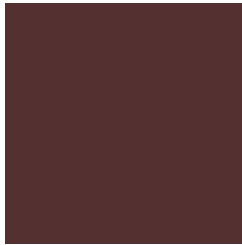


70.1660, 136.0250, 51.3610



# Previews

## White Background



This preview shows how the YIQ color 58.8780, 21.1350, 7.9430 looks on a white background.

## Color Contrast Check

Large Text (above 18pt) WCAG AA ✓ Pass

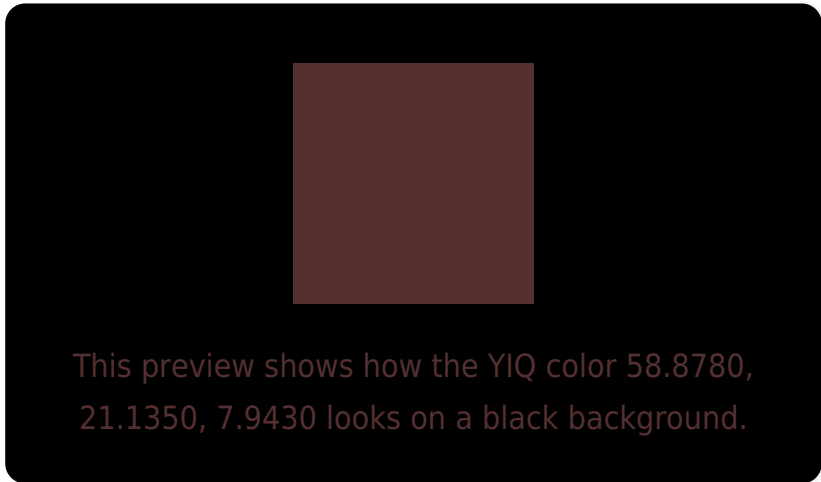
Any Text WCAG AA ✓ Pass

Large Text (above 18pt) WCAG AAA ✓ Pass

Any Text WCAG AAA ✓ Pass



# Black Background



## Color Contrast Check

Large Text (above 18pt) WCAG AA × Fail

Any Text WCAG AA × Fail

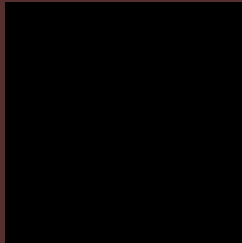
Large Text (above 18pt) WCAG AAA × Fail

Any Text WCAG AAA × Fail

If you want to check with other color combinations, try the [Color Contrast Checker](#).

**YIQ 58.8780, 21.1350, 7.9430**

## **Background**



This preview shows how black text looks on a background with the YIQ color 58.8780, 21.1350, 7.9430.



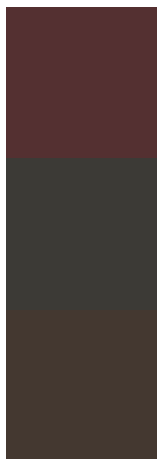
This preview shows how white text looks on a background with the YIQ color 58.8780, 21.1350,



# Color Blindness Simulation

Color vision deficiency is a very complex topic, and I could not describe the different causes any better than Wikipedia does, so if you want to learn more, you should check out their [article about color blindness](#).

## Dichromacy



### Original Color

58.8780, 21.1350, 7.9430

### Protanopia

58.1420, 2.4760, -0.8200

### Deuteranopia

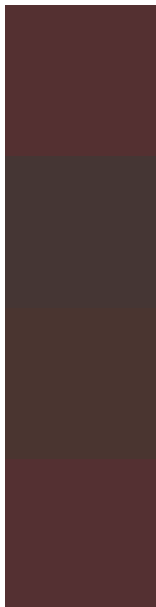
58.6760, 9.7200, 0.0560



## Tritanopia

59.1060, 20.4930, 8.5650

# Trichromacy



## Original Color

58.8780, 21.1350, 7.9430

## Protanomaly

58.2570, 9.5820, 2.5580

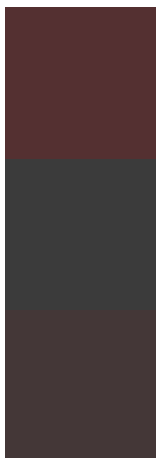
## Deuteranomaly

58.7090, 14.1210, 2.8970

## Tritanomaly

58.9920, 20.8140, 8.2540

# Monochromacy



## Original Color

58.8780, 21.1350, 7.9430

## Achromatopsia

59.0000, 0.0000, -0.0000

## Achromatomaly

58.8870, 7.7480, 2.7560

# CSS Examples

## Text

The CSS property to change the color of the text to YIQ 58.8780, 21.1350, 7.9430 is called "color". The color property can be set on classes, ids or directly on the HTML element.

This example shows how text in the color rgb(84, 48, 49) looks like.

```
.text, #text, p{  
    color:rgb(84, 48, 49)  
}
```

If you want to add a text shadow in that color use the text-shadow property, you can generate a text shadow directly with our [CSS Text Shadow Generator](#).

Here you see how black text with a 4 pixel rgb(84, 48, 49) colored shadow looks like.

```
.shadow{ text-shadow: 4px 4px 2px rgb(84, 48, 49) }
```

## Border

The CSS property to change the border of an element to YIQ 58.8780, 21.1350, 7.9430 is called "border". The border property can be set on classes, ids or directly on the HTML element.

This example shows the color as border, it can be applied via the CSS property "border" or "border-color".

```
.border, #border, table{ border:4px solid rgb(84, 48, 49) }
```



If only the border color should be changed use the property `border-color`.

```
.border{ border-color:rgb(84, 48, 49) }
```

If you want to add a box shadow in that color use:

Here you see how a box with a 4 pixel `rgb(84, 48, 49)` colored shadow looks like.

```
.boxshadow{ -moz-box-shadow:4px 4px 4px  
4px rgb(84, 48, 49); -webkit-box-  
shadow:4px 4px 4px 4px rgb(84, 48, 49);  
box-shadow:4px 4px 4px 4px rgb(84, 48, 49)  
}
```

# Background

The CSS property to change the background color of an element to YIQ 58.8780, 21.1350, 7.9430 is called "background". The background property can be set on classes, ids or directly on the HTML element.

```
.background, #background, body{  
background: rgb(84, 48, 49) }
```

If only the background color should be changed can be used:

```
.background{ background-color: rgb(84, 48,  
49) }
```

This example shows the color as background, it is applied via the CSS property "background".

To optimize and compress your CSS code, you can use our [online CSS compressor and optimizer](#) based on csstidy. If you want to create a linear or radial gradient as background or border, check our [CSS Gradient Generator](#).

# Hey! You found this booklet interesting? Support Converting Colors with the new Membership Option!

The pro membership hides all ads, plus gives you double the colors in the color bucket, and more awesome pro features!

**[Learn more, Memberships starting at \\$2.50/m!](#)**

**Follow me  
on Twitter!**

@ConvertingColor