

Converting Colors

YIQ(58.9750, 10.3160, 0.2680)

Have a look what the booklet for
YIQ(58.9750, 10.3160, 0.2680)
contains.

YIQ(58.9750, 10.3160, 0.2680)	3
<i>Conversions</i>	4
<i>Details</i>	6
<i>Harmonies</i>	12
<i>Previews</i>	24
<i>Color Blindness Simulation</i>	28
<i>CSS Examples</i>	31

Color

**YIQ(58.9750, 10.3160,
0.2680)**

Conversions

Conversions Part 1

Format	Color
Hex	453830
RGB	69, 56, 48
RGB Percent	27%, 22%, 19%
CMY	0.7294, 0.7804, 0.8117
CMYK	0.00, 0.19, 0.30, 0.73
HSL	23°, 18%, 23%
HSV	23°, 30%, 27%
XYZ	4.4024, 4.3068, 3.3969
YIQ	58.9750, 10.3160, 0.2680

Conversions

Conversions Part 2

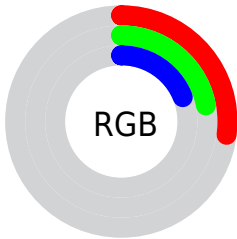
Format	Color
RYB	69, 61, 48
Decimal	4536368
CIELab	24.66, 4.30, 7.14
CIELCh	25, 8.339, 58.943
Yxy	4.3068, 0.3637, 0.3558
Android (android.graphics.Color)	4282726448 (0xFF453830)
YUV	58.9750, -5.4107, 8.7919
Hunter-Lab	20.7527, 1.5487, 4.8222

Details

The YIQ color **58.9750, 10.3160, 0.2680** is a dark color, and the websafe version is hex **333333**. A complement of this color would be **58.0250, -10.3160, -0.2680**, and the grayscale version is **59.0000, 0.0000, -0.0000**.

A 20% lighter version of the original color is **106.4590, 11.8290, 0.3810**, and **15.7040, 12.5170, -1.0750** is the 20% darker color. If you saturate the color by 10%, you get **55.8290, 13.6630, 0.1830**, and if you desaturate by 10%, it is **62.1210, 6.9690, 0.3530**.

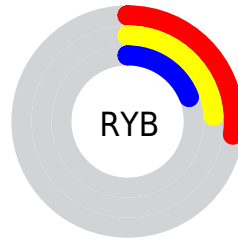
Distribution



Red (27%)

Green (22%)

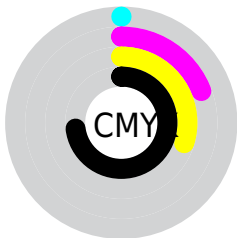
Blue (19%)



Red (27%)

Yellow (24%)

Blue (19%)

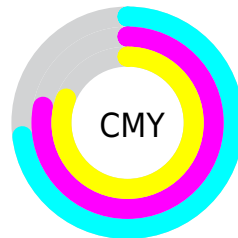


Cyan (0%)

Magenta (19%)

Yellow (30%)

Black (73%)



Cyan (73%)

Magenta (78%)

Yellow (81%)

Brightness & Saturation Gradients

These gradients show how the YIQ color 58.9750, 10.3160, 0.2680 changes by changing the brightness by 10 percent. The first figure shows a shift by +10% for each color and the second figure -10%.

Similar to the brightness gradients but the following saturation gradients show a change of the YIQ color 58.9750, 10.3160, 0.2680 by changing the saturation by 10% instead.

■ 58.9750, 10.3160,
0.2680

■ 58.9750, 10.3160,
0.2680

255.0000, -0.0000,
-0.0000

■ 37.3770, 9.1240,
-0.1560

■ 106.4590, 11.8290,
0.3810

■ 15.7040, 12.5170,
-1.0750

■ 131.4590, 11.8290,
0.3810

■ 0.0000, 0.0000,
0.0000

■ 157.6440, 12.7460,
0.2820

■ 184.6440, 12.7460,
0.2820

■ 211.9430, 13.3420,
0.4940

■ 240.2420, 13.9380,

0.7060

■ 58.9750, 10.3160,
0.2680

■ 58.9750, 10.3160,
0.2680

■ 55.8290, 13.6630,
0.1830

■ 62.1210, 6.9690,
0.3530

■ 52.0960, 17.2850,
0.6210

■ 65.8540, 3.3470,
-0.0850

■ 48.9500, 20.6320,
0.5360

■ 69.0000, -0.0000,
-0.0000

■ 45.8040, 23.9790,
0.4510

■ 72.1460, -3.3470,
0.0850

■ 42.7720, 27.0050,
0.6770

■ 75.2920, -6.6940,
0.1700

■ 39.0390, 30.6270,
1.1150

■ 78.9110, -9.9950,
-0.5790

■ 35.8930, 33.9740,
1.0300

■ 82.0570, -13.3420,
-0.4940

■ 85.2030, -16.6890,
-0.4090

■ 88.3490, -20.0360,
-0.3240

Harmonies

Analogous

The Analogous color harmony consists of three colors that are next to each other on the color wheel.



59.8550, 10.7740, 2.9820



58.9750, 10.3160, 0.2680



58.4260, 7.4280, -2.4600

Triad

The Triadic color harmony groups three colors that are evenly spaced from another and form a triangle on the color wheel.



58.9750, 10.3160, 0.2680



56.1620, -9.4440, -5.0600



58.9660, -2.6600, 4.1560

Complementary

The Complementary color scheme is a pair of colors which are on the opposite of each other on the color wheel.



58.9750, 10.3160, 0.2680



58.0250, -10.3160, -0.2680

Split Complementary

Split-complementary colors differ from the complementary color scheme. The scheme consists of three colors, the original color and two neighbors of the complement color.



57.9760, -8.6200, 2.0360



58.9750, 10.3160, 0.2680



56.2480, -12.5620, -3.6180

Square

The Square scheme is like the rectangle color scheme, but the four colors are evenly spaced on the color wheel.



58.9750, 10.3160, 0.2680



56.6850, -3.6670, -5.1310



56.8290, -12.7000, -1.1160



59.7280, 3.9420, 5.6540

Rectangle

The Rectangle color scheme consists of four colors that form a rectangle on the color wheel.



58.9750, 10.3160, 0.2680



57.6320, 3.8520, -3.7320



56.8290, -12.7000, -1.1160



59.0690, -4.4480, 3.5200

Sweetspot

The Sweet Spot groups the original color and five complimentary colors.



58.9750, 10.3160, 0.2680



85.1530, 3.9430, 0.1270



55.7610, 8.3430, 8.4950



43.6690, 2.4300, 0.0140



173.0000, -0.0000, 0.0000



46.0000, 0.0000, -0.0000

Same Dimension

The Same Dimension uses a secret algorithm to generate beautiful new colors.



58.9750, 10.3160, 0.2680



73.4980, 16.0930, 0.1970



64.8450, 7.5660, -4.9620



33.7830, 2.1090, 0.3250



51.9070, 48.5540, 1.1140



118.3550, 111.6420, 3.1460

Inverse Universe

The Inverse Universe completely reimagines the original color for something new.



58.0250, -10.3160, -0.2680



72.0890, -16.3680, -0.7200



52.1550, -7.5660, 4.9620



33.6300, -1.8340, 0.1980



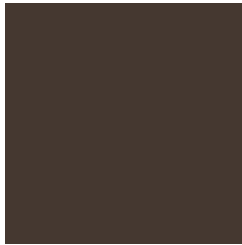
47.6800, -48.8290, -1.6370



108.6450, -111.6420, -3.1460

Previews

White Background



This preview shows how the YIQ color 58.9750, 10.3160, 0.2680 looks on a white background.

Color Contrast Check

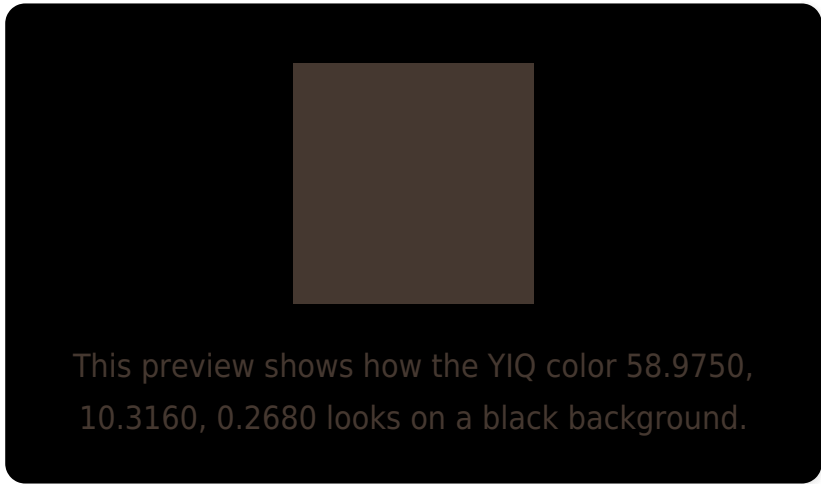
Large Text (above 18pt) WCAG AA ✓ Pass

Any Text WCAG AA ✓ Pass

Large Text (above 18pt) WCAG AAA ✓ Pass

Any Text WCAG AAA ✓ Pass

Black Background



Color Contrast Check

Large Text (above 18pt) WCAG AA × Fail

Any Text WCAG AA × Fail

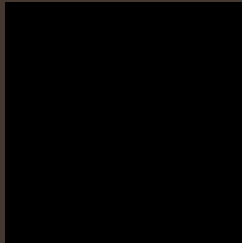
Large Text (above 18pt) WCAG AAA × Fail

Any Text WCAG AAA × Fail

If you want to check with other color combinations, try the [Color Contrast Checker](#).

YIQ 58.9750, 10.3160, 0.2680

Background



This preview shows how black text looks on a background with the YIQ color 58.9750, 10.3160, 0.2680.



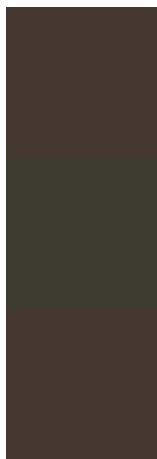
This preview shows how white text looks on a background with the YIQ color 58.9750, 10.3160,

0.2680.

Color Blindness Simulation

Color vision deficiency is a very complex topic, and I could not describe the different causes any better than Wikipedia does, so if you want to learn more, you should check out their [article about color blindness](#).

Dichromacy



Original Color

58.9750, 10.3160, 0.2680

Protanopia

58.7570, 4.9980, -2.4740

Deuteranopia

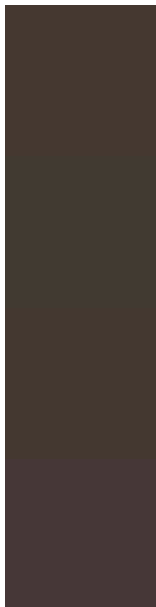
58.6760, 9.7200, 0.0560



Tritanopia

59.3540, 7.9310, 4.9470

Trichromacy



Original Color

58.9750, 10.3160, 0.2680

Protanomaly

59.0670, 7.0610, -1.3150

Deuteranomaly

58.6760, 9.7200, 0.0560

Tritanomaly

59.4850, 8.9400, 3.1800

Monochromacy



Original Color

58.9750, 10.3160, 0.2680

Achromatopsia

59.0000, 0.0000, -0.0000

Achromatomaly

59.1530, 3.9430, 0.1270

CSS Examples

Text

The CSS property to change the color of the text to YIQ 58.9750, 10.3160, 0.2680 is called "color". The color property can be set on classes, ids or directly on the HTML element.

This example shows how text in the color `rgb(69, 56, 48)` looks like.

```
.text, #text, p{  
    color:rgb(69, 56, 48)  
}
```

If you want to add a text shadow in that color use the text-shadow property, you can generate a text shadow directly with our [CSS Text Shadow Generator](#).

Here you see how black text with a 4 pixel rgb(69, 56, 48) colored shadow looks like.

```
.shadow{ text-shadow: 4px 4px 2px rgb(69, 56, 48) }
```

Border

The CSS property to change the border of an element to YIQ 58.9750, 10.3160, 0.2680 is called "border". The border property can be set on classes, ids or directly on the HTML element.

This example shows the color as border, it can be applied via the CSS property "border" or "border-color".

```
.border, #border, table{ border:4px solid rgb(69, 56, 48) }
```


If only the border color should be changed use the property `border-color`.

```
.border{ border-color:rgb(69, 56, 48) }
```

If you want to add a box shadow in that color use:

Here you see how a box with a 4 pixel `rgb(69, 56, 48)` colored shadow looks like.

```
.boxshadow{ -moz-box-shadow:4px 4px 4px  
4px rgb(69, 56, 48); -webkit-box-  
shadow:4px 4px 4px 4px rgb(69, 56, 48);  
box-shadow:4px 4px 4px 4px rgb(69, 56, 48)  
}
```

Background

The CSS property to change the background color of an element to YIQ 58.9750, 10.3160, 0.2680 is called "background". The background property can be set on classes, ids or directly on the HTML element.

```
.background, #background, body{  
background: rgb(69, 56, 48) }
```

If only the background color should be changed can be used:

```
.background{ background-color: rgb(69, 56,  
48) }
```

This example shows the color as background, it is applied via the CSS property "background".

To optimize and compress your CSS code, you can use our [online CSS compressor and optimizer](#) based on csstidy. If you want to create a linear or radial gradient as background or border, check our [CSS Gradient Generator](#).

Hey! You found this booklet interesting? Support Converting Colors with the new Membership Option!

The pro membership hides all ads, plus gives you double the colors in the color bucket, and more awesome pro features!

[Learn more, Memberships starting at \\$2.50/m!](#)

**Follow me
on Twitter!**

@ConvertingColor