

Converting Colors

YIQ(59.7250, 17.1920, 7.8160)

Have a look what the booklet for
YIQ(59.7250, 17.1920, 7.8160)
contains.

YIQ(59.7250, 17.1920, 7.8160)	3
<i>Conversions</i>	4
<i>Details</i>	6
<i>Harmonies</i>	12
<i>Previews</i>	24
<i>Color Blindness Simulation</i>	28
<i>CSS Examples</i>	31

Color

**YIQ(59.7250, 17.1920,
7.8160)**

Conversions

Conversions Part 1

Format	Color
Hex	513236
RGB	81, 50, 54
RGB Percent	32%, 20%, 21%
CMY	0.6823, 0.8040, 0.7882
CMYK	0.00, 0.38, 0.33, 0.68
HSL	352°, 24%, 26%
HSV	352°, 38%, 32%
XYZ	5.2013, 4.2968, 4.0473
YIQ	59.7250, 17.1920, 7.8160

Conversions

Conversions Part 2

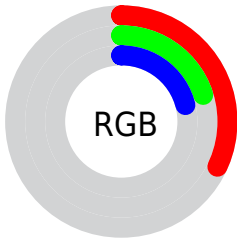
Format	Color
R_{YB}	81, 50, 54
Decimal	5321270
CIE Lab	24.63, 14.70, 3.30
CIE LCh	25, 15.069, 12.664
Yxy	4.2968, 0.3840, 0.3172
Android (android.graphics.Color)	4283511350 (0xFF513236)
YUV	59.7250, -2.8224, 18.6582
Hunter-Lab	20.7287, 8.5145, 2.9336

Details

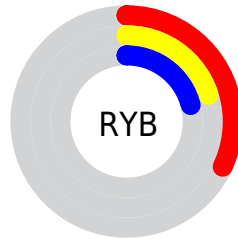
The YIQ color **59.7250, 17.1920, 7.8160** is a dark color, and the websafe version is hex **663333**. A complement of this color would be **71.2750, -17.1920, -7.8160**, and the grayscale version is **60.0000, -0.0000, -0.0000**.

A 20% lighter version of the original color is **107.6220, 18.9800, 8.4520**, and **14.7250, 17.1920, 7.8160** is the 20% darker color. If you saturate the color by 10%, you get **54.2310, 21.6390, 9.8230**, and if you desaturate by 10%, it is **65.2190, 12.7450, 5.8090**.

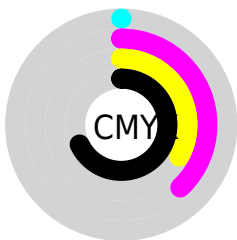
Distribution



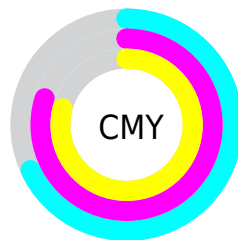
- Red (32%)
- Green (20%)
- Blue (21%)



- Red (32%)
- Yellow (20%)
- Blue (21%)



- Cyan (0%)
- Magenta (38%)
- Yellow (33%)
- Black (68%)



- Cyan (68%)
- Magenta (80%)
- Yellow (79%)

Brightness & Saturation Gradients

These gradients show how the YIQ color 59.7250, 17.1920, 7.8160 changes by changing the brightness by 10 percent. The first figure shows a shift by +10% for each color and the second figure -10%.

Similar to the brightness gradients but the following saturation gradients show a change of the YIQ color 59.7250, 17.1920, 7.8160 by changing the saturation by 10% instead.

■ 59.7250, 17.1920,
7.8160

■ 59.7250, 17.1920,
7.8160

■ 255.0000, -0.0000,
-0.0000

■ 37.2410, 15.6790,
7.7030

■ 107.6220, 18.9800,
8.4520

■ 14.7250, 17.1920,
7.8160

■ 133.2200, 20.1720,
8.8760

■ 0.0000, 0.0000,
0.0000

■ 158.8180, 21.3640,
9.3000

■ 186.1170, 21.9600,
9.5120

■ 214.4160, 22.5560,
9.7240

■ 237.9310, 13.6160,

6.5440

■ 59.7250, 17.1920,
7.8160

■ 59.7250, 17.1920,
7.8160

■ 54.2310, 21.6390,
9.8230

■ 65.2190, 12.7450,
5.8090

■ 48.7370, 26.0860,
11.8300

■ 70.7130, 8.2980,
3.8020

■ 43.2430, 30.5330,
13.8370

■ 76.2070, 3.8510,
1.7950

■ 37.7490, 34.9800,
15.8440

■ 81.7010, -0.5960,
-0.2120

■ 31.6680, 39.7020,
18.3740

■ 87.1950, -5.0430,
-2.2190

■ 26.1740, 44.1490,
20.3810

■ 93.2760, -9.7650,
-4.7490

■ 25.4730, 44.7450,
20.5930

■ 98.7700, -14.2120,
-6.7560

■ 104.2640,
-18.6590, -8.7630

■ 109.7580,
-23.1060, -10.7700

Harmonies

Analogous

The Analogous color harmony consists of three colors that are next to each other on the color wheel.



60.4840, 10.6810, 10.1770



59.7250, 17.1920, 7.8160



59.1610, 18.6600, 3.2360

Triad

The Triadic color harmony groups three colors that are evenly spaced from another and form a triangle on the color wheel.



59.7250, 17.1920, 7.8160



55.7190, -1.0070, -9.2870



54.7940, -22.7870, -0.0270

Complementary

The Complementary color scheme is a pair of colors which are on the opposite of each other on the color wheel.



59.7250, 17.1920, 7.8160



71.2750, -17.1920, -7.8160

Split Complementary

Split-complementary colors differ from the complementary color scheme. The scheme consists of three colors, the original color and two neighbors of the complement color.



52.1690, -28.5170, -6.3170



59.7250, 17.1920, 7.8160



53.8470, -13.1110, -10.1910

Square

The Square scheme is like the rectangle color scheme, but the four colors are evenly spaced on the color wheel.



59.7250, 17.1920, 7.8160



57.2750, 9.1710, -6.5170



52.5130, -23.7940, -9.3140



58.4150, -11.2340, 5.3580

Rectangle

The Rectangle color scheme consists of four colors that form a rectangle on the color wheel.



59.7250, 17.1920, 7.8160



58.5690, 17.3310, -0.2130



52.5130, -23.7940, -9.3140



53.6580, -25.4000, -2.2320

Sweetspot

The Sweet Spot groups the original color and five complimentary colors.



59.7250, 17.1920, 7.8160



96.8160, 6.5100, 3.1660



61.6070, 6.1410, 15.3650



49.0930, 4.1720, 1.4840



181.0000, -0.0000, 0.0000



54.0000, -0.0000, 0.0000

Same Dimension

The Same Dimension uses a secret algorithm to generate beautiful new colors.



59.7250, 17.1920, 7.8160



71.4490, 26.9570, 12.5650



65.7260, 15.4510, 0.8190



38.1960, 2.3840, 0.8480



32.9910, 58.0860, 26.6140



72.7880, 128.6420, 58.5140

Inverse Universe

The Inverse Universe completely reimagines the original color for something new.



59.7250, 17.1920, 7.8160



71.4490, 26.9570, 12.5650



65.2740, -15.4510, -0.8190



38.1960, 2.3840, 0.8480



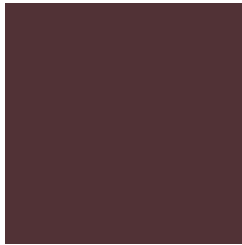
32.9910, 58.0860, 26.6140



72.7880, 128.6420, 58.5140

Previews

White Background



This preview shows how the YIQ color 59.7250, 17.1920, 7.8160 looks on a white background.

Color Contrast Check

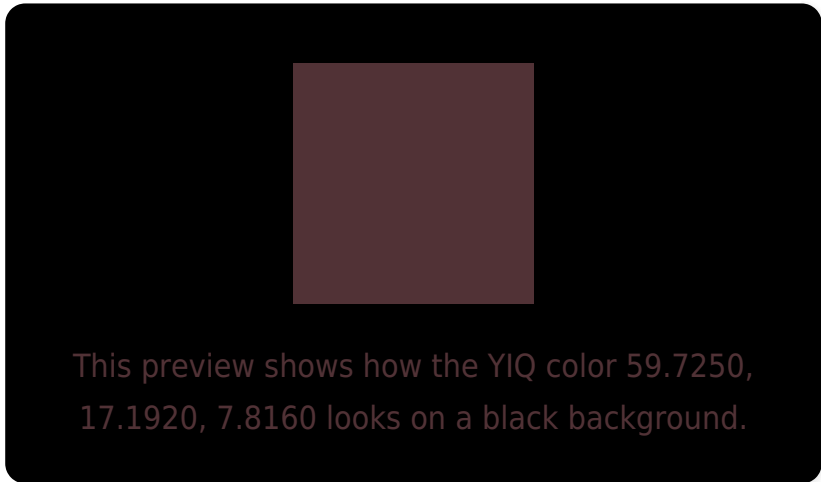
Large Text (above 18pt) WCAG AA ✓ Pass

Any Text WCAG AA ✓ Pass

Large Text (above 18pt) WCAG AAA ✓ Pass

Any Text WCAG AAA ✓ Pass

Black Background



Color Contrast Check

Large Text (above 18pt) WCAG AA × Fail

Any Text WCAG AA × Fail

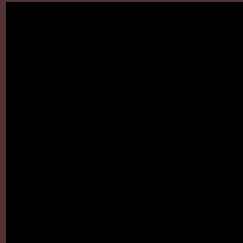
Large Text (above 18pt) WCAG AAA × Fail

Any Text WCAG AAA × Fail

If you want to check with other color combinations, try the [Color Contrast Checker](#).

YIQ 59.7250, 17.1920, 7.8160

Background



This preview shows how black text looks on a background with the YIQ color 59.7250, 17.1920, 7.8160.

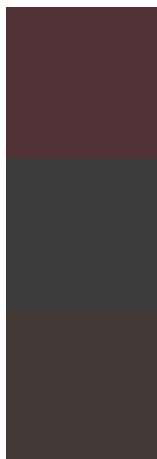


This preview shows how white text looks on a background with the YIQ color 59.7250, 17.1920,

Color Blindness Simulation

Color vision deficiency is a very complex topic, and I could not describe the different causes any better than Wikipedia does, so if you want to learn more, you should check out their [article about color blindness](#).

Dichromacy



Original Color

59.7250, 17.1920, 7.8160

Protanopia

59.2990, 0.5960, 0.2120

Deuteranopia

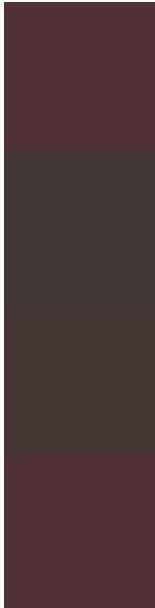
59.5340, 7.2440, 0.8760



Tritanopia

59.7250, 17.1920, 7.8160

Trichromacy



Original Color

59.7250, 17.1920, 7.8160

Protanomaly

59.7020, 6.8310, 2.8550

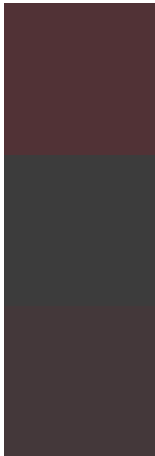
Deuteranomaly

59.2680, 11.0490, 3.5050

Tritanomaly

59.7250, 17.1920, 7.8160

Monochromacy



Original Color

59.7250, 17.1920, 7.8160

Achromatopsia

60.0000, -0.0000, -0.0000

Achromatomaly

59.8160, 6.5100, 3.1660

CSS Examples

Text

The CSS property to change the color of the text to YIQ 59.7250, 17.1920, 7.8160 is called "color". The color property can be set on classes, ids or directly on the HTML element.

This example shows how text in the color `rgb(81, 50, 54)` looks like.

```
.text, #text, p{  
    color:rgb(81, 50, 54)  
}
```

If you want to add a text shadow in that color use the text-shadow property, you can generate a text shadow directly with our [CSS Text Shadow Generator](#).

Here you see how black text with a 4 pixel rgb(81, 50, 54) colored shadow looks like.

```
.shadow{ text-shadow: 4px 4px 2px rgb(81, 50, 54) }
```

Border

The CSS property to change the border of an element to YIQ 59.7250, 17.1920, 7.8160 is called "border". The border property can be set on classes, ids or directly on the HTML element.

This example shows the color as border, it can be applied via the CSS property "border" or "border-color".

```
.border, #border, table{ border:4px solid rgb(81, 50, 54) }
```


If only the border color should be changed use the property `border-color`.

```
.border{ border-color:rgb(81, 50, 54) }
```

If you want to add a box shadow in that color use:

Here you see how a box with a 4 pixel `rgb(81, 50, 54)` colored shadow looks like.

```
.boxshadow{ -moz-box-shadow:4px 4px 4px  
4px rgb(81, 50, 54); -webkit-box-  
shadow:4px 4px 4px 4px rgb(81, 50, 54);  
box-shadow:4px 4px 4px 4px rgb(81, 50, 54)  
}
```

Background

The CSS property to change the background color of an element to YIQ 59.7250, 17.1920, 7.8160 is called "background". The background property can be set on classes, ids or directly on the HTML element.

```
.background, #background, body{  
background: rgb(81, 50, 54) }
```

If only the background color should be changed can be used:

```
.background{ background-color: rgb(81, 50,  
54) }
```

This example shows the color as background, it is applied via the CSS property "background".

To optimize and compress your CSS code, you can use our [online CSS compressor and optimizer](#) based on csstidy. If you want to create a linear or radial gradient as background or border, check our [CSS Gradient Generator](#).

Hey! You found this booklet interesting? Support Converting Colors with the new Membership Option!

The pro membership hides all ads, plus gives you double the colors in the color bucket, and more awesome pro features!

[Learn more, Memberships starting at \\$2.50/m!](#)

**Follow me
on Twitter!**

@ConvertingColor