

Converting Colors

YIQ(61.1880, 14.0300, -0.9620)

Have a look what the booklet for
YIQ(61.1880, 14.0300, -0.9620)
contains.

YIQ(61.1880, 14.0300, -0.9620)	3
<i>Conversions</i>	4
<i>Details</i>	6
<i>Harmonies</i>	12
<i>Previews</i>	24
<i>Color Blindness Simulation</i>	28
<i>CSS Examples</i>	31

Color

**YIQ(61.1880, 14.0300,
-0.9620)**

Conversions

Conversions Part 1

Format	Color
Hex	4A3A2C
RGB	74, 58, 44
RGB Percent	29%, 23%, 17%
CMY	0.7098, 0.7726, 0.8274
CMYK	0.00, 0.22, 0.41, 0.71
HSL	28°, 25%, 23%
HSV	28°, 41%, 29%
XYZ	4.7923, 4.6635, 3.0321
YIQ	61.1880, 14.0300, -0.9620

Conversions

Conversions Part 2

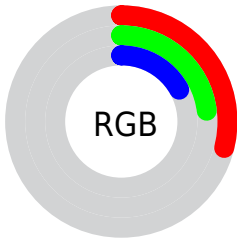
Format	Color
R_{YB}	74, 70, 44
Decimal	4864556
CIE Lab	25.75, 4.74, 11.37
CIE LCh	26, 12.318, 67.356
Yxy	4.6635, 0.3838, 0.3734
Android (android.graphics.Color)	4283054636 (0xFF4A3A2C)
YUV	61.1880, -8.4737, 11.2361
Hunter-Lab	21.5953, 1.8198, 6.7920

Details

The YIQ color **61.1880, 14.0300, -0.9620** is a dark color, and the websafe version is hex **333333**. A complement of this color would be **56.8120, -14.0300, 0.9620**, and the grayscale version is **61.0000, 0.0000, -0.0000**.

A 20% lighter version of the original color is **108.6720, 15.5430, -0.8490**, and **18.0740, 14.3510, -1.2730** is the 20% darker color. If you saturate the color by 10%, you get **58.0420, 17.3770, -1.0470**, and if you desaturate by 10%, it is **64.3340, 10.6830, -0.8770**.

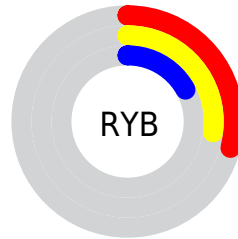
Distribution



Red (29%)

Green (23%)

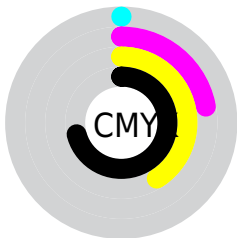
Blue (17%)



Red (29%)

Yellow (27%)

Blue (17%)

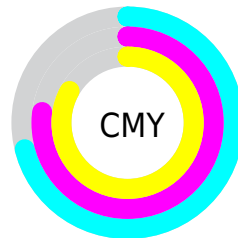


Cyan (0%)

Magenta (22%)

Yellow (41%)

Black (71%)



Cyan (71%)

Magenta (77%)

Yellow (83%)

Brightness & Saturation Gradients

These gradients show how the YIQ color 61.1880, 14.0300, -0.9620 changes by changing the brightness by 10 percent. The first figure shows a shift by +10% for each color and the second figure -10%.

Similar to the brightness gradients but the following saturation gradients show a change of the YIQ color 61.1880, 14.0300, -0.9620 by changing the saturation by 10% instead.

■ 61.1880, 14.0300,
-0.9620

■ 61.1880, 14.0300,
-0.9620

■ 255.0000, -0.0000,
-0.0000

■ 39.0030, 13.1130,
-0.8630

■ 108.6720, 15.5430,
-0.8490

■ 18.0740, 14.3510,
-1.2730

■ 134.1560, 17.0560,
-0.7360

■ 0.0000, 0.0000,
0.0000

■ 160.1560, 17.0560,
-0.7360

■ 187.3410, 17.9730,
-0.8350

■ 215.2270, 18.2940,
-1.1460

■ 241.7320, 15.3140,

-2.2060

254.4300, 1.6050,
-1.5550

■ 61.1880, 14.0300,
-0.9620

■ 61.1880, 14.0300,
-0.9620

■ 58.0420, 17.3770,
-1.0470

■ 64.3340, 10.6830,
-0.8770

■ 54.7820, 21.0450,
-1.4430

■ 67.5940, 7.0150,
-0.4810

■ 51.6360, 24.3920,
-1.5280

■ 70.7400, 3.6680,
-0.3960

■ 48.3760, 28.0600,
-1.9240

■ 74.0000, -0.0000,
0.0000

■ 45.2300, 31.4070,
-2.0090

■ 77.1460, -3.3470,
0.0850

■ 42.0840, 34.7540,
-2.0940

■ 80.2920, -6.6940,
0.1700

■ 83.5520, -10.3620,
0.5660

■ 86.6980, -13.7090,
0.6510

■ 89.9580, -17.3770,
1.0470

Harmonies

Analogous

The Analogous color harmony consists of three colors that are next to each other on the color wheel.



61.6060, 15.9090, 3.5330



61.1880, 14.0300, -0.9620



60.3290, 9.0790, -4.8490

Triad

The Triadic color harmony groups three colors that are evenly spaced from another and form a triangle on the color wheel.



61.1880, 14.0300, -0.9620



56.6880, -16.9170, -7.2930



62.1450, -1.6060, 7.0820

Complementary

The Complementary color scheme is a pair of colors which are on the opposite of each other on the color wheel.



61.1880, 14.0300, -0.9620



56.8120, -14.0300, 0.9620

Split Complementary

Split-complementary colors differ from the complementary color scheme. The scheme consists of three colors, the original color and two neighbors of the complement color.



60.6600, -10.5460, 3.9020



61.1880, 14.0300, -0.9620



57.1160, -20.9980, -4.9180

Square

The Square scheme is like the rectangle color scheme, but the four colors are evenly spaced on the color wheel.



61.1880, 14.0300, -0.9620



58.3530, -8.6640, -8.1840



58.4200, -18.7980, -0.7340



62.4620, 7.7470, 8.2830

Rectangle

The Rectangle color scheme consists of four colors that form a rectangle on the color wheel.



61.1880, 14.0300, -0.9620



59.6380, 3.7150, -6.7570



58.4200, -18.7980, -0.7340



61.7640, -4.9070, 6.3330

Sweetspot

The Sweet Spot groups the original color and five complimentary colors.



61.1880, 14.0300, -0.9620



92.1100, 5.5020, -0.5940



54.9080, 12.4230, 11.6470



45.5550, 2.7510, -0.2970



176.0000, -0.0000, -0.0000



48.0000, -0.0000, 0.0000

Same Dimension

The Same Dimension uses a secret algorithm to generate beautiful new colors.



61.1880, 14.0300, -0.9620



76.8530, 22.2830, -1.8530



69.9930, 9.9050, -8.8070



36.3700, 1.8340, -0.1980



58.6740, 47.5920, -3.4800



131.5790, 107.6550, -7.2010

Inverse Universe

The Inverse Universe completely reimagines the original color for something new.



56.8120, -14.0300, 0.9620



69.7340, -22.5580, 1.3300



48.5940, -10.1800, 8.2840



35.6300, -1.8340, 0.1980



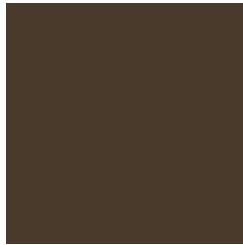
43.3260, -47.5920, 3.4800



98.4210, -107.6550, 7.2010

Previews

White Background



This preview shows how the YIQ color 61.1880, 14.0300, -0.9620 looks on a white background.

Color Contrast Check

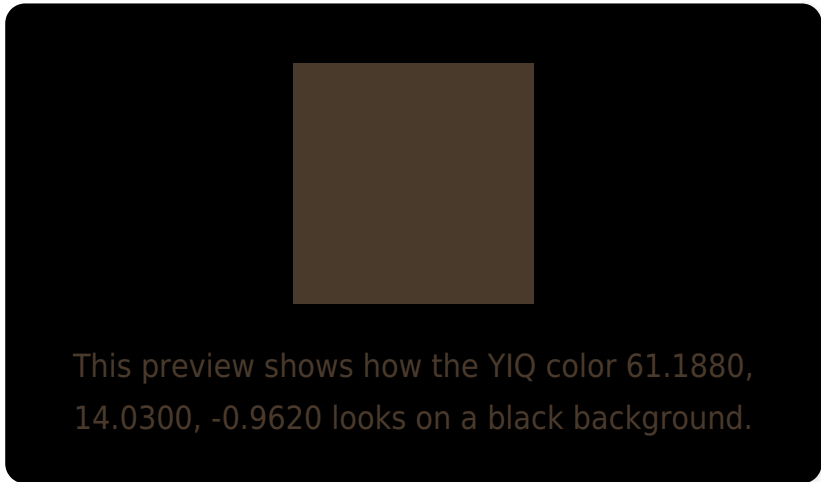
Large Text (above 18pt) WCAG AA ✓ Pass

Any Text WCAG AA ✓ Pass

Large Text (above 18pt) WCAG AAA ✓ Pass

Any Text WCAG AAA ✓ Pass

Black Background



Color Contrast Check

Large Text (above 18pt) WCAG AA × Fail

Any Text WCAG AA × Fail

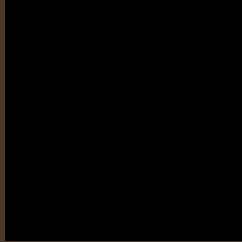
Large Text (above 18pt) WCAG AAA × Fail

Any Text WCAG AAA × Fail

If you want to check with other color combinations, try the [Color Contrast Checker](#).

YIQ 61.1880, 14.0300, -0.9620

Background



This preview shows how black text looks on a background with the YIQ color 61.1880, 14.0300, -0.9620.



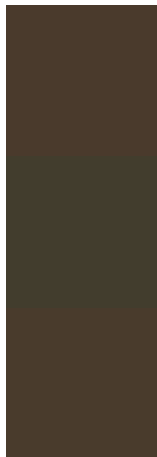
This preview shows how white text looks on a background with the YIQ color 61.1880, 14.0300,

-0.9620.

Color Blindness Simulation

Color vision deficiency is a very complex topic, and I could not describe the different causes any better than Wikipedia does, so if you want to learn more, you should check out their [article about color blindness](#).

Dichromacy



Original Color

61.1880, 14.0300, -0.9620

Protanopia

60.6710, 8.1160, -3.9160

Deuteranopia

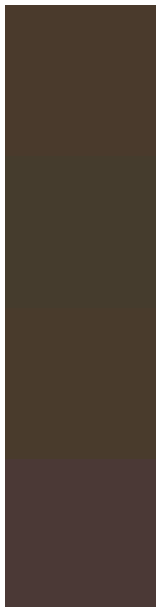
61.4760, 13.1590, -1.6970



Tritanopia

62.4360, 10.6360, 5.4840

Trichromacy



Original Color

61.1880, 14.0300, -0.9620

Protanomaly

60.9810, 10.1790, -2.7570

Deuteranomaly

61.4760, 13.1590, -1.6970

Tritanomaly

62.0400, 11.6910, 2.8830

Monochromacy



Original Color

61.1880, 14.0300, -0.9620

Achromatopsia

61.0000, 0.0000, -0.0000

Achromatomaly

61.2240, 5.1810, -0.2830

CSS Examples

Text

The CSS property to change the color of the text to YIQ 61.1880, 14.0300, -0.9620 is called "color". The color property can be set on classes, ids or directly on the HTML element.

This example shows how text in the color `rgb(74, 58, 44)` looks like.

```
.text, #text, p{  
    color:rgb(74, 58, 44)  
}
```

If you want to add a text shadow in that color use the text-shadow property, you can generate a text shadow directly with our [CSS Text Shadow Generator](#).

Here you see how black text with a 4 pixel rgb(74, 58, 44) colored shadow looks like.

```
.shadow{ text-shadow: 4px 4px 2px rgb(74, 58, 44) }
```

Border

The CSS property to change the border of an element to YIQ 61.1880, 14.0300, -0.9620 is called "border". The border property can be set on classes, ids or directly on the HTML element.

This example shows the color as border, it can be applied via the CSS property "border" or "border-color".

```
.border, #border, table{ border:4px solid rgb(74, 58, 44) }
```


If only the border color should be changed use the property `border-color`.

```
.border{ border-color:rgb(74, 58, 44) }
```

If you want to add a box shadow in that color use:

Here you see how a box with a 4 pixel `rgb(74, 58, 44)` colored shadow looks like.

```
.boxshadow{ -moz-box-shadow:4px 4px 4px  
4px rgb(74, 58, 44); -webkit-box-  
shadow:4px 4px 4px 4px rgb(74, 58, 44);  
box-shadow:4px 4px 4px 4px rgb(74, 58, 44)  
}
```

Background

The CSS property to change the background color of an element to YIQ 61.1880, 14.0300, -0.9620 is called "background". The background property can be set on classes, ids or directly on the HTML element.

```
.background, #background, body{  
background: rgb(74, 58, 44) }
```

If only the background color should be changed can be used:

```
.background{ background-color: rgb(74, 58,  
44) }
```

This example shows the color as background, it is applied via the CSS property "background".

To optimize and compress your CSS code, you can use our [online CSS compressor and optimizer](#) based on csstidy. If you want to create a linear or radial gradient as background or border, check our [CSS Gradient Generator](#).

Hey! You found this booklet interesting? Support Converting Colors with the new Membership Option!

The pro membership hides all ads, plus gives you double the colors in the color bucket, and more awesome pro features!

[Learn more, Memberships starting at \\$2.50/m!](#)

**Follow me
on Twitter!**

@ConvertingColor