

Converting Colors

YIQ(62.7680, 15.6330, 8.5370)

Have a look what the booklet for
YIQ(62.7680, 15.6330, 8.5370)
contains.

YIQ(62.7680, 15.6330, 8.5370)	3
<i>Conversions</i>	4
<i>Details</i>	6
<i>Harmonies</i>	12
<i>Previews</i>	24
<i>Color Blindness Simulation</i>	28
<i>CSS Examples</i>	31

Color

**YIQ(62.7680, 15.6330,
8.5370)**

Conversions

Conversions Part 1

Format	Color
Hex	53353C
RGB	83, 53, 60
RGB Percent	33%, 21%, 24%
CMY	0.6744, 0.7922, 0.7646
CMYK	0.00, 0.36, 0.28, 0.67
HSL	346°, 22%, 27%
HSV	346°, 36%, 33%
XYZ	5.6575, 4.7113, 4.8882
YIQ	62.7680, 15.6330, 8.5370

Conversions

Conversions Part 2

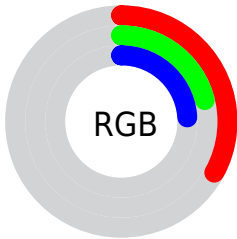
Format	Color
R_{YB}	83, 53, 60
Decimal	5453116
CIE Lab	25.90, 14.64, 1.15
CIE LCh	26, 14.683, 4.503
Yxy	4.7113, 0.3708, 0.3088
Android (android.graphics.Color)	4283643196 (0xFF53353C)
YUV	62.7680, -1.3646, 17.7435
Hunter-Lab	21.7056, 8.5407, 1.8417

Details

The YIQ color **62.7680, 15.6330, 8.5370** is a dark color, and the websafe version is hex **663333**. A complement of this color would be **73.2320, -15.6330, -8.5370**, and the grayscale version is **63.0000, 0.0000, 0.0000**.

A 20% lighter version of the original color is **110.6650, 17.4210, 9.1730**, and **18.9850, 13.5240, 8.2120** is the 20% darker color. If you saturate the color by 10%, you get **57.3880, 19.7590, 10.8550**, and if you desaturate by 10%, it is **68.1480, 11.5070, 6.2190**.

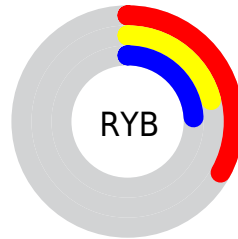
Distribution



Red (33%)

Green (21%)

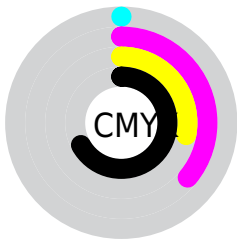
Blue (24%)



Red (33%)

Yellow (21%)

Blue (24%)

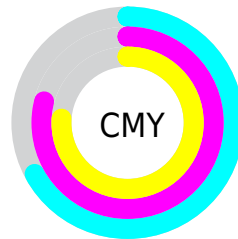


Cyan (0%)

Magenta (36%)

Yellow (28%)

Black (67%)



Cyan (67%)

Magenta (79%)

Yellow (76%)

Brightness & Saturation Gradients

These gradients show how the YIQ color 62.7680, 15.6330, 8.5370 changes by changing the brightness by 10 percent. The first figure shows a shift by +10% for each color and the second figure -10%.

Similar to the brightness gradients but the following saturation gradients show a change of the YIQ color 62.7680, 15.6330, 8.5370 by changing the saturation by 10% instead.

62.7680, 15.6330,
8.5370

62.7680, 15.6330,
8.5370

255.0000, -0.0000,
-0.0000

40.1700, 14.4410,
8.1130

110.6650, 17.4210,
9.1730

18.9850, 13.5240,
8.2120

136.2630, 18.6130,
9.5970

0.0000, 0.0000,
0.0000

162.6760, 18.8880,
10.1200

189.8610, 19.8050,
10.0210

217.5730, 20.6760,
10.7560

241.0770, 10.2690,

6.6290

■ 62.7680, 15.6330,
8.5370

■ 62.7680, 15.6330,
8.5370

■ 57.3880, 19.7590,
10.8550

■ 68.1480, 11.5070,
6.2190

■ 51.3070, 24.4810,
13.3850

■ 74.2290, 6.7850,
3.6890

■ 45.9270, 28.6070,
15.7030

■ 79.6090, 2.6590,
1.3710

■ 40.5470, 32.7330,
18.0210

■ 84.9890, -1.4670,
-0.9470

■ 34.4660, 37.4550,
20.5510

■ 90.4830, -5.9140,
-2.9540

■ 29.0860, 41.5810,
22.8690

■ 96.4500, -10.3150,
-5.7950

■ 26.9830, 43.3690,
23.5050

■ 101.9440,
-14.7620, -7.8020

■ 107.3240,
-18.8880, -10.1200

■ 113.2910,
-23.2890, -12.9610

Harmonies

Analogous

The Analogous color harmony consists of three colors that are next to each other on the color wheel.



62.8150, 8.2510, 10.1630



62.7680, 15.6330, 8.5370



62.1010, 18.8890, 4.5930

Triad

The Triadic color harmony groups three colors that are evenly spaced from another and form a triangle on the color wheel.



62.7680, 15.6330, 8.5370



58.9150, 1.3770, -8.4390



57.2560, -24.2080, -1.8080

Complementary

The Complementary color scheme is a pair of colors which are on the opposite of each other on the color wheel.



62.7680, 15.6330, 8.5370



73.2320, -15.6330, -8.5370

Split Complementary

Split-complementary colors differ from the complementary color scheme. The scheme consists of three colors, the original color and two neighbors of the complement color.



55.2400, -27.2790, -6.7270



62.7680, 15.6330, 8.5370



57.7010, -9.7640, -10.2760

Square

The Square scheme is like the rectangle color scheme, but the four colors are evenly spaced on the color wheel.



62.7680, 15.6330, 8.5370



60.2860, 10.6380, -5.5700



55.7800, -20.1720, -8.8760



60.5070, -14.4890, 3.7750

Rectangle

The Rectangle color scheme consists of four colors that form a rectangle on the color wheel.



62.7680, 15.6330, 8.5370



61.8080, 18.1560, 1.3560



55.7800, -20.1720, -8.8760



56.4190, -26.2250, -3.8010

Sweetspot

The Sweet Spot groups the original color and five complimentary colors.



62.7680, 15.6330, 8.5370



98.9300, 6.1890, 3.4770



63.2970, 4.0780, 14.2060



49.2070, 3.8510, 1.7950



181.0000, -0.0000, 0.0000



54.0000, -0.0000, 0.0000

Same Dimension

The Same Dimension uses a secret algorithm to generate beautiful new colors.



62.7680, 15.6330, 8.5370



76.0080, 23.8850, 13.1730



66.0790, 15.9550, 2.6990



38.3100, 2.0630, 1.1590



34.1310, 54.8760, 29.7240



75.5240, 120.9380, 65.9780

Inverse Universe

The Inverse Universe completely reimagines the original color for something new.



62.7680, 15.6330, 8.5370



76.0080, 23.8850, 13.1730



69.9210, -15.9550, -2.6990



38.3100, 2.0630, 1.1590



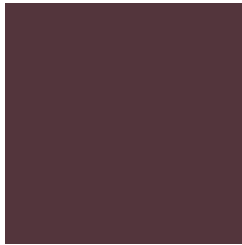
34.1310, 54.8760, 29.7240



75.5240, 120.9380, 65.9780

Previews

White Background



This preview shows how the YIQ color 62.7680, 15.6330, 8.5370 looks on a white background.

Color Contrast Check

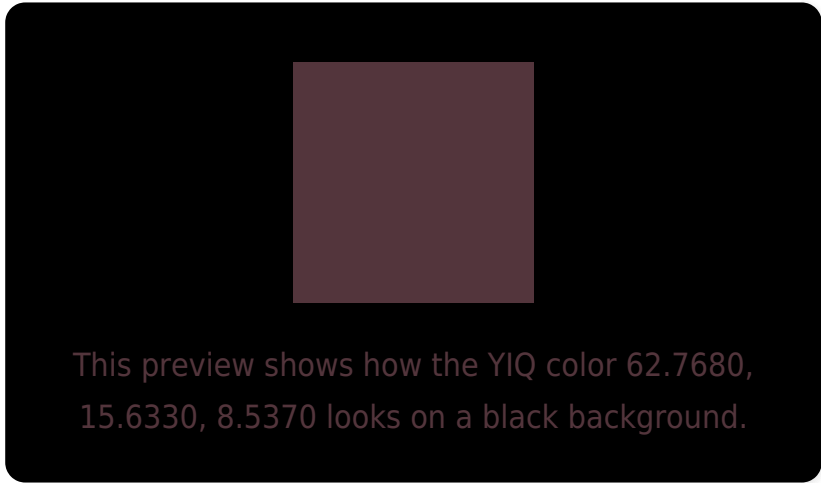
Large Text (above 18pt) WCAG AA ✓ Pass

Any Text WCAG AA ✓ Pass

Large Text (above 18pt) WCAG AAA ✓ Pass

Any Text WCAG AAA ✓ Pass

Black Background



Color Contrast Check

Large Text (above 18pt) WCAG AA × Fail

Any Text WCAG AA × Fail

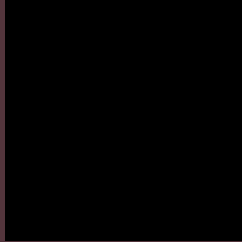
Large Text (above 18pt) WCAG AAA × Fail

Any Text WCAG AAA × Fail

If you want to check with other color combinations, try the [Color Contrast Checker](#).

YIQ 62.7680, 15.6330, 8.5370

Background



This preview shows how black text looks on a background with the YIQ color 62.7680, 15.6330, 8.5370.



This preview shows how white text looks on a background with the YIQ color 62.7680, 15.6330,

Color Blindness Simulation

Color vision deficiency is a very complex topic, and I could not describe the different causes any better than Wikipedia does, so if you want to learn more, you should check out their [article about color blindness](#).

Dichromacy



Original Color

62.7680, 15.6330, 8.5370

Protanopia

61.7550, -0.6880, 1.4560

Deuteranopia

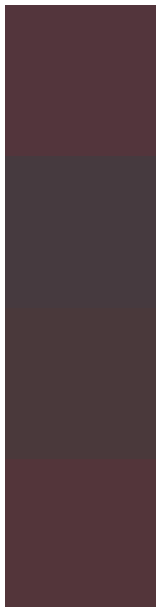
62.5770, 5.6850, 1.5970



Tritanopia

62.4260, 16.5960, 7.6040

Trichromacy



Original Color

62.7680, 15.6330, 8.5370

Protanomaly

62.1580, 5.5470, 4.0990

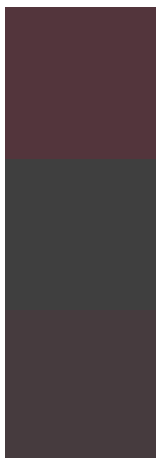
Deuteranomaly

62.3110, 9.4900, 4.2260

Tritanomaly

62.5400, 16.2750, 7.9150

Monochromacy



Original Color

62.7680, 15.6330, 8.5370

Achromatopsia

63.0000, 0.0000, 0.0000

Achromatomaly

62.6310, 5.5930, 3.2650

CSS Examples

Text

The CSS property to change the color of the text to YIQ 62.7680, 15.6330, 8.5370 is called "color". The color property can be set on classes, ids or directly on the HTML element.

This example shows how text in the color `rgb(83, 53, 60)` looks like.

```
.text, #text, p{  
    color:rgb(83, 53, 60)  
}
```

If you want to add a text shadow in that color use the text-shadow property, you can generate a text shadow directly with our [CSS Text Shadow Generator](#).

Here you see how black text with a 4 pixel rgb(83, 53, 60) colored shadow looks like.

```
.shadow{ text-shadow: 4px 4px 2px rgb(83, 53, 60) }
```

Border

The CSS property to change the border of an element to YIQ 62.7680, 15.6330, 8.5370 is called "border". The border property can be set on classes, ids or directly on the HTML element.

This example shows the color as border, it can be applied via the CSS property "border" or "border-color".

```
.border, #border, table{ border:4px solid rgb(83, 53, 60) }
```


If only the border color should be changed use the property `border-color`.

```
.border{ border-color:rgb(83, 53, 60) }
```

If you want to add a box shadow in that color use:

Here you see how a box with a 4 pixel `rgb(83, 53, 60)` colored shadow looks like.

```
.boxshadow{ -moz-box-shadow:4px 4px 4px  
4px rgb(83, 53, 60); -webkit-box-  
shadow:4px 4px 4px 4px rgb(83, 53, 60);  
box-shadow:4px 4px 4px 4px rgb(83, 53, 60)  
}
```

Background

The CSS property to change the background color of an element to YIQ 62.7680, 15.6330, 8.5370 is called "background". The background property can be set on classes, ids or directly on the HTML element.

```
.background, #background, body{  
background: rgb(83, 53, 60) }
```

If only the background color should be changed can be used:

```
.background{ background-color: rgb(83, 53,  
60) }
```

This example shows the color as background, it is applied via the CSS property "background".

To optimize and compress your CSS code, you can use our [online CSS compressor and optimizer](#) based on csstidy. If you want to create a linear or radial gradient as background or border, check our [CSS Gradient Generator](#).

Hey! You found this booklet interesting? Support Converting Colors with the new Membership Option!

The pro membership hides all ads, plus gives you double the colors in the color bucket, and more awesome pro features!

[Learn more, Memberships starting at \\$2.50/m!](#)

**Follow me
on Twitter!**

@ConvertingColor