

Converting Colors

YIQ(63.4850, 8.9400, 3.1800)

Have a look what the booklet for
YIQ(63.4850, 8.9400, 3.1800)
contains.

YIQ(63.4850, 8.9400, 3.1800)	3
<i>Conversions</i>	4
<i>Details</i>	6
<i>Harmonies</i>	12
<i>Previews</i>	24
<i>Color Blindness Simulation</i>	27
<i>CSS Examples</i>	30

Color

YIQ(63.4850, 8.9400, 3.1800)

Conversions

Conversions Part 1

Format	Color
Hex	4A3B3B
RGB	74, 59, 59
RGB Percent	29%, 23%, 23%
CMY	0.7098, 0.7686, 0.7686
CMYK	0.00, 0.20, 0.20, 0.71
HSL	360°, 11%, 26%
HSV	360°, 20%, 29%
XYZ	5.1780, 4.8993, 4.8117
YIQ	63.4850, 8.9400, 3.1800

Conversions

Conversions Part 2

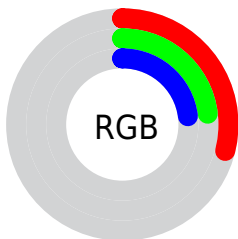
Format	Color
R_{YB}	74, 59, 59
Decimal	4864827
CIE Lab	26.45, 6.59, 2.47
CIE LCh	26, 7.037, 20.582
Yxy	4.8993, 0.3478, 0.3291
Android (android.graphics.Color)	4283054907 (0xFF4A3B3B)
YUV	63.4850, -2.2111, 9.2217
Hunter-Lab	22.1345, 3.0221, 2.6055

Details

The YIQ color **63.4850, 8.9400, 3.1800** is a dark color, and the websafe version is hex **333333**. A complement of this color would be **69.5150, -8.9400, -3.1800**, and the grayscale version is **64.0000, -0.0000, -0.0000**.

A 20% lighter version of the original color is **111.0830, 10.1320, 3.6040**, and **20.8870, 7.7480, 2.7560** is the 20% darker color. If you saturate the color by 10%, you get **58.5780, 13.1120, 4.6640**, and if you desaturate by 10%, it is **68.3920, 4.7680, 1.6960**.

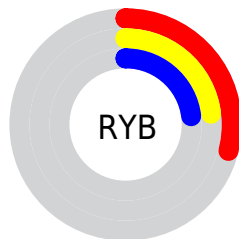
Distribution



Red (29%)

Green (23%)

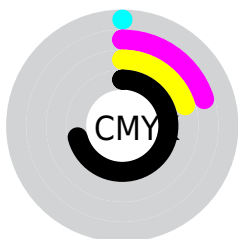
Blue (23%)



Red (29%)

Yellow (23%)

Blue (23%)

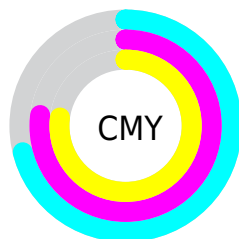


Cyan (0%)

Magenta (20%)

Yellow (20%)

Black (71%)



Cyan (71%)

Magenta (77%)

Yellow (77%)

Brightness & Saturation Gradients

These gradients show how the YIQ color 63.4850, 8.9400, 3.1800 changes by changing the brightness by 10 percent. The first figure shows a shift by +10% for each color and the second figure -10%.

Similar to the brightness gradients but the following saturation gradients show a change of the YIQ color 63.4850, 8.9400, 3.1800 by changing the saturation by 10% instead.

■ 63.4850, 8.9400,
3.1800

■ 63.4850, 8.9400,
3.1800

■ 255.0000, -0.0000,
-0.0000

■ 41.1860, 8.3440,
2.9680

■ 111.0830, 10.1320,
3.6040

■ 20.8870, 7.7480,
2.7560

■ 136.3820, 10.7280,
3.8160

■ 0.0000, 0.0000,
0.0000

■ 162.6810, 11.3240,
4.0280

■ 189.6810, 11.3240,
4.0280

■ 217.6810, 11.3240,
4.0280

■ 244.4850, 8.9400,

3.1800

■ 63.4850, 8.9400,
3.1800

■ 63.4850, 8.9400,
3.1800

■ 58.5780, 13.1120,
4.6640

■ 68.3920, 4.7680,
1.6960

■ 52.9700, 17.8800,
6.3600

■ 74.0000, -0.0000,
0.0000

■ 48.0630, 22.0520,
7.8440

■ 78.9070, -4.1720,
-1.4840

■ 42.4550, 26.8200,
9.5400

■ 84.5150, -8.9400,
-3.1800

■ 37.5480, 30.9920,
11.0240

■ 89.4220, -13.1120,
-4.6640

■ 32.6410, 35.1640,
12.5080

■ 94.3290, -17.2840,
-6.1480

■ 27.0330, 39.9320,
14.2040

■ 99.9370, -22.0520,
-7.8440

■ 22.1260, 44.1040,
15.6880

■ 104.8440,
-26.2240, -9.3280

■ 110.4520,
-30.9920, -11.0240

Harmonies

Analogous

The Analogous color harmony consists of three colors that are next to each other on the color wheel.



63.4570, 6.1430, 4.3110



63.4850, 8.9400, 3.1800



63.2030, 9.6740, 0.8900

Triad

The Triadic color harmony groups three colors that are evenly spaced from another and form a triangle on the color wheel.



63.4850, 8.9400, 3.1800



61.5820, -1.8790, -4.4950



62.3350, -8.2530, 0.8910

Complementary

The Complementary color scheme is a pair of colors which are on the opposite of each other on the color wheel.



63.4850, 8.9400, 3.1800



69.5150, -8.9400, -3.1800

Split Complementary

Split-complementary colors differ from the complementary color scheme. The scheme consists of three colors, the original color and two neighbors of the complement color.



61.1990, -10.8660, -1.3140



63.4850, 8.9400, 3.1800



60.9450, -7.3350, -4.7350

Square

The Square scheme is like the rectangle color scheme, but the four colors are evenly spaced on the color wheel.



63.4850, 8.9400, 3.1800



61.8600, 3.2100, -3.1100



60.9170, -10.1320, -3.6040



62.9550, -4.1270, 3.2090

Rectangle

The Rectangle color scheme consists of four colors that form a rectangle on the color wheel.



63.4850, 8.9400, 3.1800



62.7790, 7.9320, -0.5800



60.9170, -10.1320, -3.6040



61.6230, -9.1240, 0.1560

Sweetspot

The Sweet Spot groups the original color and five complimentary colors.



63.4850, 8.9400, 3.1800



92.7940, 3.5760, 1.2720



65.1950, 4.1250, 7.8450



45.8970, 1.7880, 0.6360



176.0000, -0.0000, -0.0000



48.0000, -0.0000, 0.0000

Same Dimension

The Same Dimension uses a secret algorithm to generate beautiful new colors.



63.4850, 8.9400, 3.1800



80.8770, 13.7080, 4.8760



67.5940, 7.0150, -0.4810



35.1960, 2.3840, 0.8480



30.4980, 60.7920, 21.6240



68.7700, 137.0800, 48.7600

Inverse Universe

The Inverse Universe completely reimagines the original color for something new.



63.4850, 8.9400, 3.1800



80.8770, 13.7080, 4.8760



65.4060, -7.0150, 0.4810



35.1960, 2.3840, 0.8480



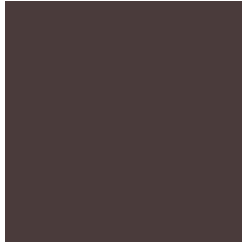
30.4980, 60.7920, 21.6240



68.7700, 137.0800, 48.7600

Previews

White Background



This preview shows how the YIQ color 63.4850, 8.9400, 3.1800 looks on a white background.

Color Contrast Check

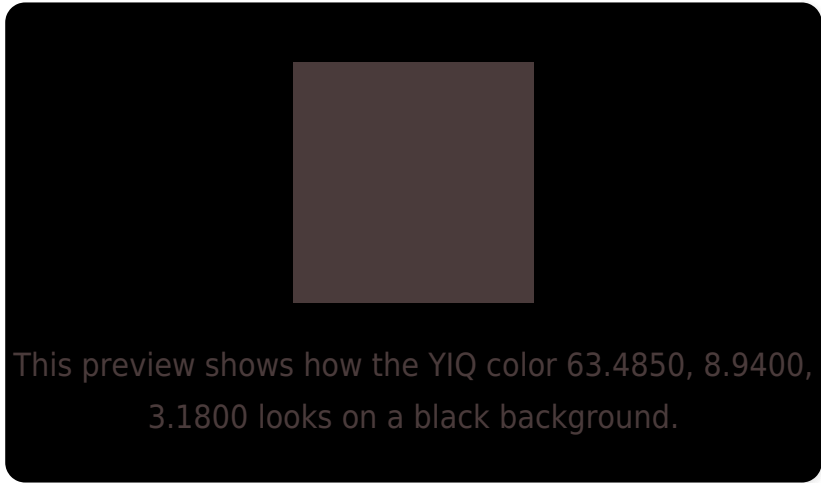
Large Text (above 18pt) WCAG AA ✓ Pass

Any Text WCAG AA ✓ Pass

Large Text (above 18pt) WCAG AAA ✓ Pass

Any Text WCAG AAA ✓ Pass

Black Background



Color Contrast Check

Large Text (above 18pt) WCAG AA × Fail

Any Text WCAG AA × Fail

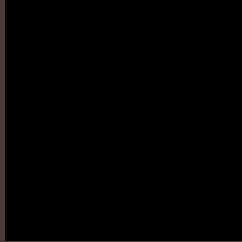
Large Text (above 18pt) WCAG AAA × Fail

Any Text WCAG AAA × Fail

If you want to check with other color combinations, try the [Color Contrast Checker](#).

YIQ 63.4850, 8.9400, 3.1800

Background



This preview shows how black text looks on a background with the YIQ color 63.4850, 8.9400, 3.1800.

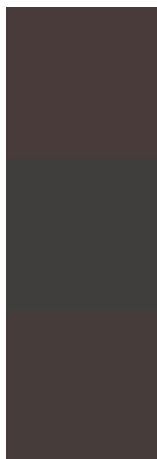


This preview shows how white text looks on a background with the YIQ color 63.4850, 8.9400, 3.1800.

Color Blindness Simulation

Color vision deficiency is a very complex topic, and I could not describe the different causes any better than Wikipedia does, so if you want to learn more, you should check out their [article about color blindness](#).

Dichromacy



Original Color

63.4850, 8.9400, 3.1800

Protanopia

62.4840, 1.5130, 0.1130

Deuteranopia

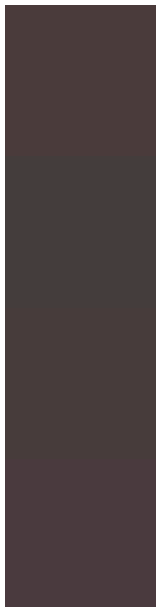
63.4630, 6.0060, 1.2860



Tritanopia

63.3540, 7.9310, 4.9470

Trichromacy



Original Color

63.4850, 8.9400, 3.1800

Protanomaly

62.9790, 4.4930, 1.1730

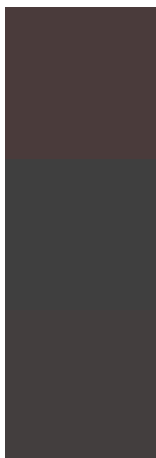
Deuteranomaly

63.1750, 6.8770, 2.0210

Tritanomaly

63.2400, 8.2520, 4.6360

Monochromacy



Original Color

63.4850, 8.9400, 3.1800

Achromatopsia

63.0000, 0.0000, 0.0000

Achromatomaly

63.4950, 2.9800, 1.0600

CSS Examples

Text

The CSS property to change the color of the text to YIQ 63.4850, 8.9400, 3.1800 is called "color". The color property can be set on classes, ids or directly on the HTML element.

This example shows how text in the color `rgb(74, 59, 59)` looks like.

```
.text, #text, p{  
    color:rgb(74, 59, 59)  
}
```

If you want to add a text shadow in that color use the text-shadow property, you can generate a text shadow directly with our [CSS Text Shadow Generator](#).

Here you see how black text with a 4 pixel rgb(74, 59, 59) colored shadow looks like.

```
.shadow{ text-shadow: 4px 4px 2px rgb(74, 59, 59) }
```

Border

The CSS property to change the border of an element to YIQ 63.4850, 8.9400, 3.1800 is called "border". The border property can be set on classes, ids or directly on the HTML element.

This example shows the color as border, it can be applied via the CSS property "border" or "border-color".

```
.border, #border, table{ border:4px solid rgb(74, 59, 59) }
```

If only the border color should be changed use the property `border-color`.

```
.border{ border-color:rgb(74, 59, 59) }
```

If you want to add a box shadow in that color use:

Here you see how a box with a 4 pixel `rgb(74, 59, 59)` colored shadow looks like.

```
.boxshadow{ -moz-box-shadow:4px 4px 4px  
4px rgb(74, 59, 59); -webkit-box-  
shadow:4px 4px 4px 4px rgb(74, 59, 59);  
box-shadow:4px 4px 4px 4px rgb(74, 59, 59)  
}
```


Background

The CSS property to change the background color of an element to YIQ 63.4850, 8.9400, 3.1800 is called "background". The background property can be set on classes, ids or directly on the HTML element.

```
.background, #background, body{  
background: rgb(74, 59, 59) }
```

If only the background color should be changed can be used:

```
.background{ background-color: rgb(74, 59,  
59) }
```

This example shows the color as background, it is applied via the CSS property "background".

To optimize and compress your CSS code, you can use our [online CSS compressor and optimizer](#) based on csstidy. If you want to create a linear or radial gradient as background or border, check our [CSS Gradient Generator](#).

Hey! You found this booklet interesting? Support Converting Colors with the new Membership Option!

The pro membership hides all ads, plus gives you double the colors in the color bucket, and more awesome pro features!

[Learn more, Memberships starting at \\$2.50/m!](#)

**Follow me
on Twitter!**

@ConvertingColor