

Converting Colors

YIQ(67.7040, 12.5170, -1.0750)

Have a look what the booklet for
YIQ(67.7040, 12.5170, -1.0750)
contains.

YIQ(67.7040, 12.5170, -1.0750)	3
<i>Conversions</i>	4
<i>Details</i>	6
<i>Harmonies</i>	12
<i>Previews</i>	24
<i>Color Blindness Simulation</i>	28
<i>CSS Examples</i>	31

Color

**YIQ(67.7040, 12.5170,
-1.0750)**

Conversions

Conversions Part 1

Format	Color
Hex	4F4134
RGB	79, 65, 52
RGB Percent	31%, 25%, 20%
CMY	0.6902, 0.7451, 0.7960
CMYK	0.00, 0.18, 0.34, 0.69
HSL	29°, 21%, 26%
HSV	29°, 34%, 31%
XYZ	5.7351, 5.6905, 4.0467
YIQ	67.7040, 12.5170, -1.0750

Conversions

Conversions Part 2

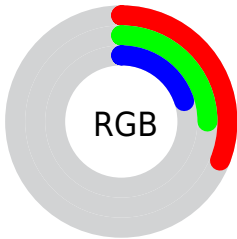
Format	Color
R_YB	79, 77, 52
Decimal	5194036
CIE Lab	28.62, 3.79, 10.18
CIE LCh	29, 10.867, 69.567
Yxy	5.6905, 0.3707, 0.3678
Android (android.graphics.Color)	4283384116 (0xFF4F4134)
YUV	67.7040, -7.7421, 9.9066
Hunter-Lab	23.8548, 1.1686, 6.6405

Details

The YIQ color **67.7040, 12.5170, -1.0750** is a dark color, and the websafe version is hex **333333**. A complement of this color would be **63.2960, -12.5170, 1.0750**, and the grayscale version is **68.0000, -0.0000, 0.0000**.

A 20% lighter version of the original color is **116.0740, 14.3510, -1.2730**, and **23.8780, 11.9670, -2.1210** is the 20% darker color. If you saturate the color by 10%, you get **64.4440, 16.1850, -1.4710**, and if you desaturate by 10%, it is **70.9640, 8.8490, -0.6790**.

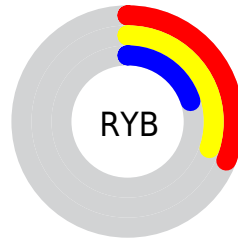
Distribution



 Red (31%)

 Green (25%)

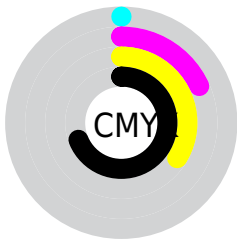
 Blue (20%)



 Red (31%)

 Yellow (30%)

 Blue (20%)

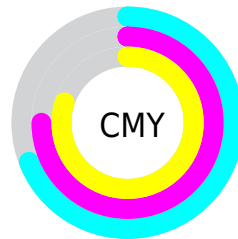


 Cyan (0%)

 Magenta (18%)

 Yellow (34%)

 Black (69%)



 Cyan (69%)

 Magenta (75%)

 Yellow (80%)

Brightness & Saturation Gradients

These gradients show how the YIQ color 67.7040, 12.5170, -1.0750 changes by changing the brightness by 10 percent. The first figure shows a shift by +10% for each color and the second figure -10%.

Similar to the brightness gradients but the following saturation gradients show a change of the YIQ color 67.7040, 12.5170, -1.0750 by changing the saturation by 10% instead.

■ 67.7040, 12.5170,
-1.0750

■ 67.7040, 12.5170,
-1.0750

■ 255.0000, -0.0000,
-0.0000

■ 45.5190, 11.6000,
-0.9760

■ 116.1880, 14.0300,
-0.9620

■ 23.8780, 11.9670,
-2.1210

■ 141.3730, 14.9470,
-1.0610

■ 0.0000, 0.0000,
0.0000

■ 167.6720, 15.5430,
-0.8490

■ 195.5580, 15.8640,
-1.1600

■ 222.8570, 16.4600,
-0.9480

■ 248.1550, 9.6290,

-3.8030

■ 67.7040, 12.5170,
-1.0750

■ 67.7040, 12.5170,
-1.0750

■ 64.4440, 16.1850,
-1.4710

■ 70.9640, 8.8490,
-0.6790

■ 61.1840, 19.8530,
-1.8670

■ 74.2240, 5.1810,
-0.2830

■ 57.9240, 23.5210,
-2.2630

■ 77.4840, 1.5130,
0.1130

■ 54.6640, 27.1890,
-2.6590

■ 80.7440, -2.1550,
0.5090

■ 50.9310, 30.8110,
-2.2210

■ 84.5910, -6.0980,
0.3820

■ 47.6710, 34.4790,
-2.6170

■ 87.7370, -9.4450,
0.4670

■ 45.9270, 36.6340,
-3.1260

■ 90.9970, -13.1130,
0.8630

■ 94.2570, -16.7810,
1.2590

■ 97.5170, -20.4490,
1.6550

Harmonies

Analogous

The Analogous color harmony consists of three colors that are next to each other on the color wheel.



68.5950, 14.4420, 2.5860



67.7040, 12.5170, -1.0750



66.9590, 7.2450, -4.6510

Triad

The Triadic color harmony groups three colors that are evenly spaced from another and form a triangle on the color wheel.



67.7040, 12.5170, -1.0750



63.9980, -14.8540, -6.1340



68.2160, -0.3680, 6.6720

Complementary

The Complementary color scheme is a pair of colors which are on the opposite of each other on the color wheel.



67.7040, 12.5170, -1.0750



63.2960, -12.5170, 1.0750

Split Complementary

Split-complementary colors differ from the complementary color scheme. The scheme consists of three colors, the original color and two neighbors of the complement color.



67.1440, -9.0330, 4.0150



67.7040, 12.5170, -1.0750



64.6110, -18.0180, -3.8580

Square

The Square scheme is like the rectangle color scheme, but the four colors are evenly spaced on the color wheel.



67.7040, 12.5170, -1.0750



64.7660, -8.3890, -7.6610



65.8010, -15.4970, 0.0150



69.0490, 7.4720, 7.7600

Rectangle

The Rectangle color scheme consists of four colors that form a rectangle on the color wheel.



67.7040, 12.5170, -1.0750



65.9800, 2.7520, -5.8240



65.8010, -15.4970, 0.0150



68.1340, -3.0730, 6.1350

Sweetspot

The Sweet Spot groups the original color and five complimentary colors.



67.7040, 12.5170, -1.0750



97.9250, 4.5850, -0.4950



61.6690, 11.5980, 10.0780



48.5550, 2.7510, -0.2970



179.0000, -0.0000, -0.0000



51.0000, -0.0000, -0.0000

Same Dimension

The Same Dimension uses a secret algorithm to generate beautiful new colors.



67.7040, 12.5170, -1.0750



84.2980, 19.5320, -1.5560



75.3350, 8.9420, -7.8740



36.3700, 1.8340, -0.1980



59.2610, 47.3170, -4.0030



133.3400, 106.8300, -8.7700

Inverse Universe

The Inverse Universe completely reimagines the original color for something new.



63.2960, -12.5170, 1.0750



77.7020, -19.5320, 1.5560



55.6650, -8.9420, 7.8740



35.6300, -1.8340, 0.1980



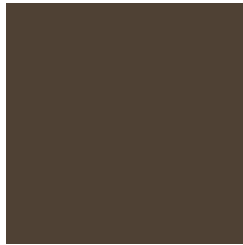
42.7390, -47.3170, 4.0030



96.0730, -106.5550, 9.2930

Previews

White Background



This preview shows how the YIQ color 67.7040, 12.5170, -1.0750 looks on a white background.

Color Contrast Check

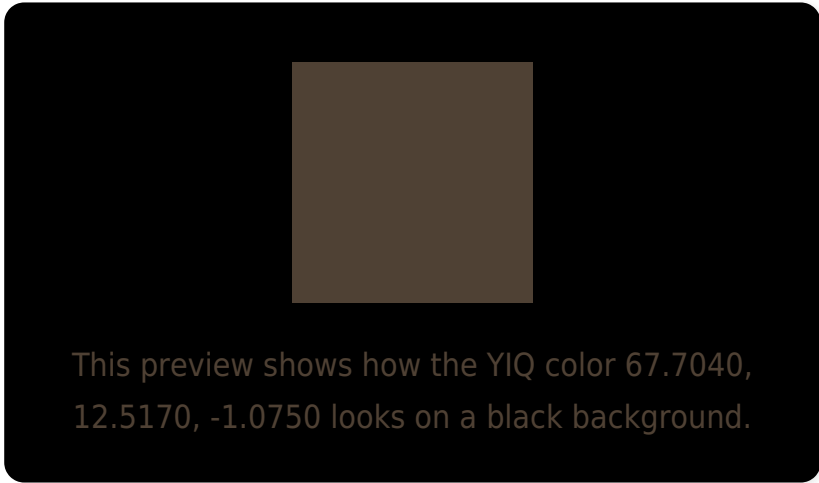
Large Text (above 18pt) WCAG AA ✓ Pass

Any Text WCAG AA ✓ Pass

Large Text (above 18pt) WCAG AAA ✓ Pass

Any Text WCAG AAA ✓ Pass

Black Background



Color Contrast Check

Large Text (above 18pt) WCAG AA × Fail

Any Text WCAG AA × Fail

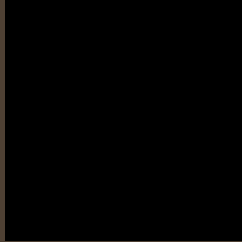
Large Text (above 18pt) WCAG AAA × Fail

Any Text WCAG AAA × Fail

If you want to check with other color combinations, try the [Color Contrast Checker](#).

YIQ 67.7040, 12.5170, -1.0750

Background



This preview shows how black text looks on a background with the YIQ color 67.7040, 12.5170, -1.0750.



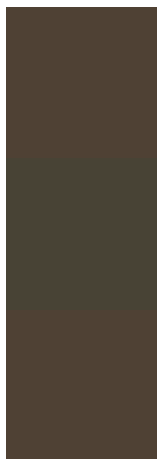
This preview shows how white text looks on a background with the YIQ color 67.7040, 12.5170,

-1.0750.

Color Blindness Simulation

Color vision deficiency is a very complex topic, and I could not describe the different causes any better than Wikipedia does, so if you want to learn more, you should check out their [article about color blindness](#).

Dichromacy



Original Color

67.7040, 12.5170, -1.0750

Protanopia

66.8990, 7.4740, -3.2940

Deuteranopia

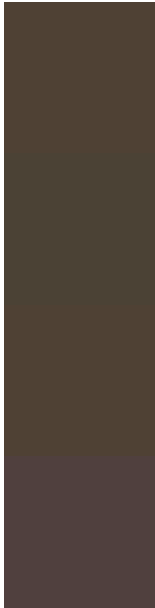
67.7040, 12.5170, -1.0750



Tritanopia

68.9520, 9.1230, 5.3710

Trichromacy



Original Color

67.7040, 12.5170, -1.0750

Protanomaly

67.2090, 9.5370, -2.1350

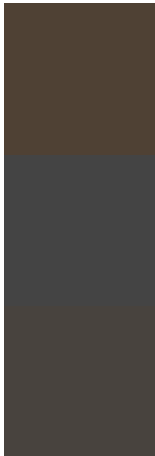
Deuteranomaly

67.7040, 12.5170, -1.0750

Tritanomaly

68.5560, 10.1780, 2.7700

Monochromacy



Original Color

67.7040, 12.5170, -1.0750

Achromatopsia

68.0000, -0.0000, 0.0000

Achromatomaly

67.9250, 4.5850, -0.4950

CSS Examples

Text

The CSS property to change the color of the text to YIQ 67.7040, 12.5170, -1.0750 is called "color". The color property can be set on classes, ids or directly on the HTML element.

This example shows how text in the color `rgb(79, 65, 52)` looks like.

```
.text, #text, p{  
    color:rgb(79, 65, 52)  
}
```

If you want to add a text shadow in that color use the text-shadow property, you can generate a text shadow directly with our [CSS Text Shadow Generator](#).

Here you see how black text with a 4 pixel rgb(79, 65, 52) colored shadow looks like.

```
.shadow{ text-shadow: 4px 4px 2px rgb(79, 65, 52) }
```

Border

The CSS property to change the border of an element to YIQ 67.7040, 12.5170, -1.0750 is called "border". The border property can be set on classes, ids or directly on the HTML element.

This example shows the color as border, it can be applied via the CSS property "border" or "border-color".

```
.border, #border, table{ border:4px solid rgb(79, 65, 52) }
```


If only the border color should be changed use the property `border-color`.

```
.border{ border-color:rgb(79, 65, 52) }
```

If you want to add a box shadow in that color use:

Here you see how a box with a 4 pixel `rgb(79, 65, 52)` colored shadow looks like.

```
.boxshadow{ -moz-box-shadow:4px 4px 4px  
4px rgb(79, 65, 52); -webkit-box-  
shadow:4px 4px 4px 4px rgb(79, 65, 52);  
box-shadow:4px 4px 4px 4px rgb(79, 65, 52)  
}
```

Background

The CSS property to change the background color of an element to YIQ 67.7040, 12.5170, -1.0750 is called "background". The background property can be set on classes, ids or directly on the HTML element.

```
.background, #background, body{  
background: rgb(79, 65, 52) }
```

If only the background color should be changed can be used:

```
.background{ background-color: rgb(79, 65,  
52) }
```

This example shows the color as background, it is applied via the CSS property "background".

To optimize and compress your CSS code, you can use our [online CSS compressor and optimizer](#) based on csstidy. If you want to create a linear or radial gradient as background or border, check our [CSS Gradient Generator](#).

Hey! You found this booklet interesting? Support Converting Colors with the new Membership Option!

The pro membership hides all ads, plus gives you double the colors in the color bucket, and more awesome pro features!

[Learn more, Memberships starting at \\$2.50/m!](#)

**Follow me
on Twitter!**

@ConvertingColor