

Converting Colors

YIQ(69.8610, 10.6370, -0.0430)

Have a look what the booklet for
YIQ(69.8610, 10.6370, -0.0430)
contains.

YIQ(69.8610, 10.6370, -0.0430)	3
<i>Conversions</i>	4
<i>Details</i>	6
<i>Harmonies</i>	12
<i>Previews</i>	24
<i>Color Blindness Simulation</i>	28
<i>CSS Examples</i>	31

Color

**YIQ(69.8610, 10.6370,
-0.0430)**

Conversions

Conversions Part 1

Format	Color
Hex	50433A
RGB	80, 67, 58
RGB Percent	31%, 26%, 23%
CMY	0.6862, 0.7373, 0.7725
CMYK	0.00, 0.16, 0.27, 0.69
HSL	25°, 16%, 27%
HSV	25°, 27%, 31%
XYZ	6.0797, 6.0250, 4.8472
YIQ	69.8610, 10.6370, -0.0430

Conversions

Conversions Part 2

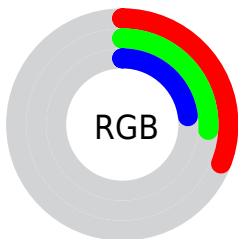
Format	Color
R_{YB}	80, 73, 58
Decimal	5260090
CIE Lab	29.48, 3.95, 7.52
CIE LCh	29, 8.497, 62.309
Yxy	6.0250, 0.3586, 0.3554
Android (android.graphics.Color)	4283450170 (0xFF50433A)
YUV	69.8610, -5.8475, 8.8919
Hunter-Lab	24.5459, 1.2565, 5.4739

Details

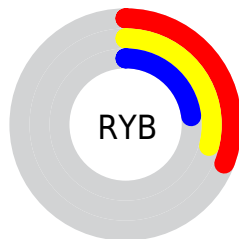
The YIQ color **69.8610, 10.6370, -0.0430** is a dark color, and the websafe version is hex **333333**. A complement of this color would be **68.1390, -10.6370, 0.0430**, and the grayscale version is **70.0000, 0.0000, 0.0000**.

A 20% lighter version of the original color is **118.3450, 12.1500, 0.0700**, and **26.2630, 9.4450, -0.4670** is the 20% darker color. If you saturate the color by 10%, you get **66.0140, 14.5800, 0.0840**, and if you desaturate by 10%, it is **73.7080, 6.6940, -0.1700**.

Distribution



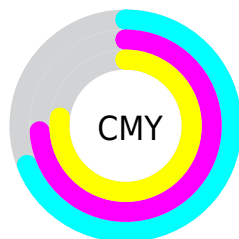
- Red (31%)
- Green (26%)
- Blue (23%)



- Red (31%)
- Yellow (29%)
- Blue (23%)



- Cyan (0%)
- Magenta (16%)
- Yellow (27%)
- Black (69%)



- Cyan (69%)
- Magenta (74%)
- Yellow (77%)

Brightness & Saturation Gradients

These gradients show how the YIQ color 69.8610, 10.6370, -0.0430 changes by changing the brightness by 10 percent. The first figure shows a shift by +10% for each color and the second figure -10%.

Similar to the brightness gradients but the following saturation gradients show a change of the YIQ color 69.8610, 10.6370, -0.0430 by changing the saturation by 10% instead.

■ 69.8610, 10.6370,
-0.0430

■ 69.8610, 10.6370,
-0.0430

■ 255.0000, -0.0000,
-0.0000

■ 47.5620, 10.0410,
-0.2550

■ 118.3450, 12.1500,
0.0700

■ 26.2630, 9.4450,
-0.4670

■ 143.6440, 12.7460,
0.2820

■ 1.1960, 2.3840,
0.8480

■ 170.5300, 13.0670,
-0.0290

■ 0.0000, 0.0000,
0.0000

■ 197.5300, 13.0670,
-0.0290

■ 225.8290, 13.6630,
0.1830

■ 250.2410, 6.5110,

-2.3610

■ 69.8610, 10.6370,
-0.0430

■ 69.8610, 10.6370,
-0.0430

■ 66.0140, 14.5800,
0.0840

■ 73.7080, 6.6940,
-0.1700

■ 62.7540, 18.2480,
-0.3120

■ 76.9680, 3.0260,
0.2260

■ 58.9070, 22.1910,
-0.1850

■ 80.8150, -0.9170,
0.0990

■ 55.0600, 26.1340,
-0.0580

■ 84.6620, -4.8600,
-0.0280

■ 51.2130, 30.0770,
0.0690

■ 88.5090, -8.8030,
-0.1550

■ 47.9530, 33.7450,
-0.3270

■ 91.7690, -12.4710,
0.2410

■ 44.1060, 37.6880,
-0.2000

■ 95.6160, -16.4140,
0.1140

■ 43.2910, 38.6050,
-0.2990

■ 99.4630, -20.3570,
-0.0130

■ 103.3100,
-24.3000, -0.1400

Harmonies

Analogous

The Analogous color harmony consists of three colors that are next to each other on the color wheel.



70.1540, 11.3700, 3.1940



69.8610, 10.6370, -0.0430



69.0130, 7.1530, -2.9830

Triad

The Triadic color harmony groups three colors that are evenly spaced from another and form a triangle on the color wheel.



69.8610, 10.6370, -0.0430



66.9770, -10.3610, -4.9610



70.3790, -2.3850, 4.6790

Complementary

The Complementary color scheme is a pair of colors which are on the opposite of each other on the color wheel.



69.8610, 10.6370, -0.0430



68.1390, -10.6370, 0.0430

Split Complementary

Split-complementary colors differ from the complementary color scheme. The scheme consists of three colors, the original color and two neighbors of the complement color.



69.2750, -8.0240, 2.2480



69.8610, 10.6370, -0.0430



67.0630, -13.4790, -3.5190

Square

The Square scheme is like the rectangle color scheme, but the four colors are evenly spaced on the color wheel.



69.8610, 10.6370, -0.0430



67.6740, -5.1340, -6.0780



68.2420, -12.4250, -0.5930



71.0270, 4.5380, 5.8660

Rectangle

The Rectangle color scheme consists of four colors that form a rectangle on the color wheel.



69.8610, 10.6370, -0.0430



68.8060, 3.3020, -4.7780



68.2420, -12.4250, -0.5930



69.8950, -3.8980, 4.5660

Sweetspot

The Sweet Spot groups the original color and five complimentary colors.



69.8610, 10.6370, -0.0430



101.0390, 4.2640, -0.1840



66.0600, 8.9390, 8.7070



50.9680, 3.0260, 0.2260



181.0000, -0.0000, 0.0000



54.0000, -0.0000, 0.0000

Same Dimension

The Same Dimension uses a secret algorithm to generate beautiful new colors.



69.8610, 10.6370, -0.0430



88.6830, 17.0100, 0.0980



76.3180, 7.6120, -5.7960



38.7830, 2.1090, 0.3250



56.6360, 50.7550, -0.2290



125.1330, 112.1470, -0.5010

Inverse Universe

The Inverse Universe completely reimagines the original color for something new.



68.1390, -10.6370, 0.0430



85.7300, -16.7350, 0.4250



61.6820, -7.6120, 5.7960



38.6300, -1.8340, 0.1980



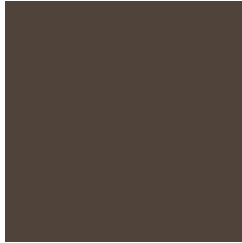
48.3640, -50.7550, 0.2290



106.8670, -112.1470, 0.5010

Previews

White Background



This preview shows how the YIQ color 69.8610, 10.6370, -0.0430 looks on a white background.

Color Contrast Check

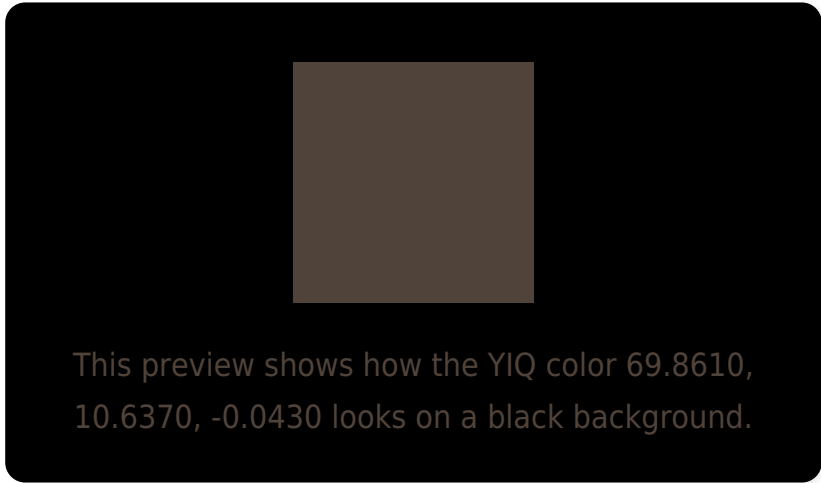
Large Text (above 18pt) WCAG AA ✓ Pass

Any Text WCAG AA ✓ Pass

Large Text (above 18pt) WCAG AAA ✓ Pass

Any Text WCAG AAA ✓ Pass

Black Background



Color Contrast Check

Large Text (above 18pt) WCAG AA × Fail

Any Text WCAG AA × Fail

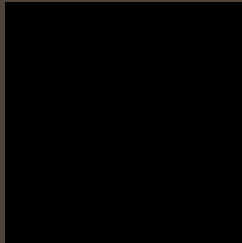
Large Text (above 18pt) WCAG AAA × Fail

Any Text WCAG AAA × Fail

If you want to check with other color combinations, try the [Color Contrast Checker](#).

YIQ 69.8610, 10.6370, -0.0430

Background



This preview shows how black text looks on a background with the YIQ color 69.8610, 10.6370, -0.0430.



This preview shows how white text looks on a background with the YIQ color 69.8610, 10.6370,

-0.0430.

Color Blindness Simulation

Color vision deficiency is a very complex topic, and I could not describe the different causes any better than Wikipedia does, so if you want to learn more, you should check out their [article about color blindness](#).

Dichromacy



Original Color

69.8610, 10.6370, -0.0430

Protanopia

69.0560, 5.5940, -2.2620

Deuteranopia

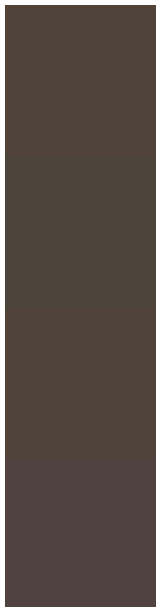
69.8610, 10.6370, -0.0430



Tritanopia

70.3540, 7.9310, 4.9470

Trichromacy



Original Color

69.8610, 10.6370, -0.0430

Protanomaly

69.3660, 7.6570, -1.1030

Deuteranomaly

69.8610, 10.6370, -0.0430

Tritanomaly

70.4850, 8.9400, 3.1800

Monochromacy



Original Color

69.8610, 10.6370, -0.0430

Achromatopsia

70.0000, 0.0000, 0.0000

Achromatomaly

70.1530, 3.9430, 0.1270

CSS Examples

Text

The CSS property to change the color of the text to YIQ 69.8610, 10.6370, -0.0430 is called "color". The color property can be set on classes, ids or directly on the HTML element.

This example shows how text in the color `rgb(80, 67, 58)` looks like.

```
.text, #text, p{  
    color:rgb(80, 67, 58)  
}
```

If you want to add a text shadow in that color use the text-shadow property, you can generate a text shadow directly with our [CSS Text Shadow Generator](#).

Here you see how black text with a 4 pixel rgb(80, 67, 58) colored shadow looks like.

```
.shadow{ text-shadow: 4px 4px 2px rgb(80, 67, 58) }
```

Border

The CSS property to change the border of an element to YIQ 69.8610, 10.6370, -0.0430 is called "border". The border property can be set on classes, ids or directly on the HTML element.

This example shows the color as border, it can be applied via the CSS property "border" or "border-color".

```
.border, #border, table{ border:4px solid rgb(80, 67, 58) }
```


If only the border color should be changed use the property `border-color`.

```
.border{ border-color:rgb(80, 67, 58) }
```

If you want to add a box shadow in that color use:

Here you see how a box with a 4 pixel `rgb(80, 67, 58)` colored shadow looks like.

```
.boxshadow{ -moz-box-shadow:4px 4px 4px  
4px rgb(80, 67, 58); -webkit-box-  
shadow:4px 4px 4px 4px rgb(80, 67, 58);  
box-shadow:4px 4px 4px 4px rgb(80, 67, 58)  
}
```

Background

The CSS property to change the background color of an element to YIQ 69.8610, 10.6370, -0.0430 is called "background". The background property can be set on classes, ids or directly on the HTML element.

```
.background, #background, body{  
background: rgb(80, 67, 58) }
```

If only the background color should be changed can be used:

```
.background{ background-color: rgb(80, 67,  
58) }
```

This example shows the color as background, it is applied via the CSS property "background".

To optimize and compress your CSS code, you can use our [online CSS compressor and optimizer](#) based on csstidy. If you want to create a linear or radial gradient as background or border, check our [CSS Gradient Generator](#).

Hey! You found this booklet interesting? Support Converting Colors with the new Membership Option!

The pro membership hides all ads, plus gives you double the colors in the color bucket, and more awesome pro features!

[Learn more, Memberships starting at \\$2.50/m!](#)

**Follow me
on Twitter!**

@ConvertingColor