

Converting Colors

YIQ(70.3770, 9.1240, -0.1560)

Have a look what the booklet for
YIQ(70.3770, 9.1240, -0.1560)
contains.

YIQ(70.3770, 9.1240, -0.1560)	3
<i>Conversions</i>	4
<i>Details</i>	6
<i>Harmonies</i>	12
<i>Previews</i>	24
<i>Color Blindness Simulation</i>	28
<i>CSS Examples</i>	31

Color

**YIQ(70.3770, 9.1240,
-0.1560)**

Conversions

Conversions Part 1

Format	Color
Hex	4F443C
RGB	79, 68, 60
RGB Percent	31%, 27%, 24%
CMY	0.6902, 0.7333, 0.7647
CMYK	0.00, 0.14, 0.24, 0.69
HSL	25°, 14%, 27%
HSV	25°, 24%, 31%
XYZ	6.1076, 6.1225, 5.1363
YIQ	70.3770, 9.1240, -0.1560

Conversions

Conversions Part 2

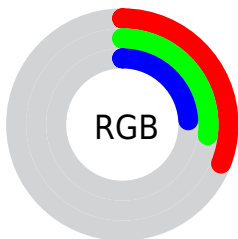
Format	Color
RYB	79, 74, 60
Decimal	5194812
CIELab	29.72, 3.20, 6.56
CIElCh	30, 7.302, 63.985
Yxy	6.1225, 0.3517, 0.3525
Android (android.graphics.Color)	4283384892 (0xFF4F443C)
YUV	70.3770, -5.1159, 7.5624
Hunter-Lab	24.7438, 0.7585, 5.0132

Details

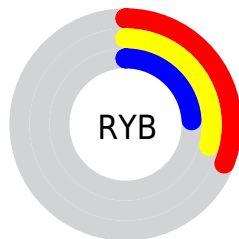
The YIQ color **70.3770, 9.1240, -0.1560** is a dark color, and the websafe version is hex **333333**. A complement of this color would be **68.6230, -9.1240, 0.1560**, and the grayscale version is **70.0000, 0.0000, 0.0000**.

A 20% lighter version of the original color is **118.5620, 10.0410, -0.2550**, and **26.8930, 7.6110, -0.2690** is the 20% darker color. If you saturate the color by 10%, you get **66.5300, 13.0670, -0.0290**, and if you desaturate by 10%, it is **74.2240, 5.1810, -0.2830**.

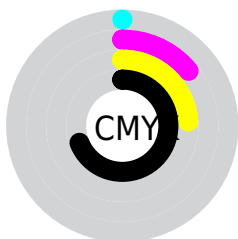
Distribution



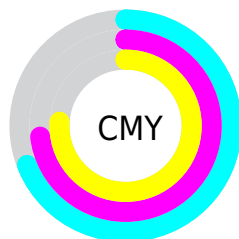
- Red (31%)
- Green (27%)
- Blue (24%)



- Red (31%)
- Yellow (29%)
- Blue (24%)



- Cyan (0%)
- Magenta (14%)
- Yellow (24%)
- Black (69%)



- Cyan (69%)
- Magenta (73%)
- Yellow (76%)

Brightness & Saturation Gradients

These gradients show how the YIQ color 70.3770, 9.1240, -0.1560 changes by changing the brightness by 10 percent. The first figure shows a shift by +10% for each color and the second figure -10%.

Similar to the brightness gradients but the following saturation gradients show a change of the YIQ color 70.3770, 9.1240, -0.1560 by changing the saturation by 10% instead.

■ 70.3770, 9.1240,
-0.1560

■ 70.3770, 9.1240,
-0.1560

■ 255.0000, -0.0000,
-0.0000

■ 48.0780, 8.5280,
-0.3680

■ 118.5620, 10.0410,
-0.2550

■ 26.8930, 7.6110,
-0.2690

■ 144.5620, 10.0410,
-0.2550

■ 1.4950, 2.9800,
1.0600

■ 170.8610, 10.6370,
-0.0430

■ 0.0000, 0.0000,
0.0000

■ 198.1600, 11.2330,
0.1690

■ 226.0460, 11.5540,
-0.1420

■ 251.7570, 4.9980,

-2.4740

■ 70.3770, 9.1240,
-0.1560

■ 70.3770, 9.1240,
-0.1560

■ 66.5300, 13.0670,
-0.0290

■ 74.2240, 5.1810,
-0.2830

■ 63.2700, 16.7350,
-0.4250

■ 77.4840, 1.5130,
0.1130

■ 59.4230, 20.6780,
-0.2980

■ 81.3310, -2.4300,
-0.0140

■ 56.1630, 24.3460,
-0.6940

■ 84.5910, -6.0980,
0.3820

■ 52.4300, 27.9680,
-0.2560

■ 88.4380, -10.0410,
0.2550

■ 49.1700, 31.6360,
-0.6520

■ 91.5840, -13.3880,
0.3400

■ 45.3230, 35.5790,
-0.5250

■ 95.4310, -17.3310,
0.2130

■ 42.9920, 38.0090,
-0.5110

■ 99.2780, -21.2740,
0.0860

■ 102.5380,
-24.9420, 0.4820

Harmonies

Analogous

The Analogous color harmony consists of three colors that are next to each other on the color wheel.



71.1430, 9.9030, 2.2470



70.3770, 9.1240, -0.1560



69.9420, 5.9150, -2.5730

Triad

The Triadic color harmony groups three colors that are evenly spaced from another and form a triangle on the color wheel.



70.3770, 9.1240, -0.1560



67.9880, -8.8940, -4.0140



70.4500, -1.1470, 4.2690

Complementary

The Complementary color scheme is a pair of colors which are on the opposite of each other on the color wheel.



70.3770, 9.1240, -0.1560



68.6230, -9.1240, 0.1560

Split Complementary

Split-complementary colors differ from the complementary color scheme. The scheme consists of three colors, the original color and two neighbors of the complement color.



69.7590, -6.5110, 2.3610



70.3770, 9.1240, -0.1560



68.2590, -11.0950, -2.6710

Square

The Square scheme is like the rectangle color scheme, but the four colors are evenly spaced on the color wheel.



70.3770, 9.1240, -0.1560



68.5000, -4.5840, -5.0320



69.0250, -10.3160, -0.2680



71.2010, 3.9880, 4.8200

Rectangle

The Rectangle color scheme consists of four colors that form a rectangle on the color wheel.



70.3770, 9.1240, -0.1560



69.4470, 2.9350, -3.6330



69.0250, -10.3160, -0.2680



70.5530, -2.9350, 3.6330

Sweetspot

The Sweet Spot groups the original color and five complimentary colors.



70.3770, 9.1240, -0.1560



98.8540, 3.3470, -0.0850



66.9350, 7.7930, 7.4490



49.3700, 1.8340, -0.1980



179.0000, -0.0000, -0.0000



51.0000, -0.0000, -0.0000

Same Dimension

The Same Dimension uses a secret algorithm to generate beautiful new colors.



70.3770, 9.1240, -0.1560



88.6010, 14.3050, -0.4390



75.6600, 6.6490, -4.8630



36.3700, 1.8340, -0.1980



55.7390, 48.9670, -0.8650



125.1220, 110.6800, -1.4480

Inverse Universe

The Inverse Universe completely reimagines the original color for something new.



68.6230, -9.1240, 0.1560



85.9860, -14.5800, -0.0840



63.3400, -6.6490, 4.8630



36.2170, -2.1090, -0.3250



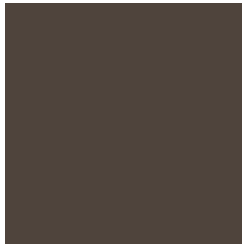
46.2610, -48.9670, 0.8650



104.2910, -110.4050, 1.9710

Previews

White Background



This preview shows how the YIQ color 70.3770, 9.1240, -0.1560 looks on a white background.

Color Contrast Check

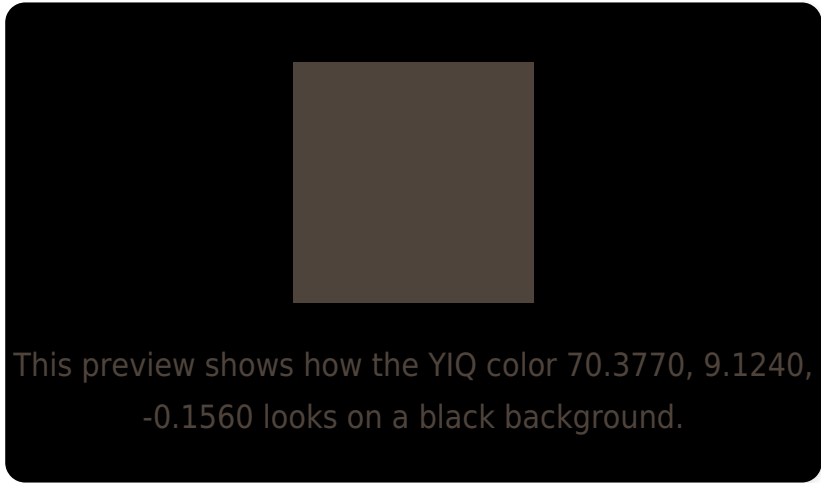
Large Text (above 18pt) WCAG AA ✓ Pass

Any Text WCAG AA ✓ Pass

Large Text (above 18pt) WCAG AAA ✓ Pass

Any Text WCAG AAA ✓ Pass

Black Background



Color Contrast Check

Large Text (above 18pt) WCAG AA × Fail

Any Text WCAG AA × Fail

Large Text (above 18pt) WCAG AAA × Fail

Any Text WCAG AAA × Fail

If you want to check with other color combinations, try the [Color Contrast Checker](#).

YIQ 70.3770, 9.1240, -0.1560

Background



This preview shows how black text looks on a background with the YIQ color 70.3770, 9.1240, -0.1560.



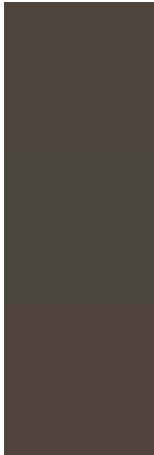
This preview shows how white text looks on a background with the YIQ color 70.3770, 9.1240,

-0.1560.

Color Blindness Simulation

Color vision deficiency is a very complex topic, and I could not describe the different causes any better than Wikipedia does, so if you want to learn more, you should check out their [article about color blindness](#).

Dichromacy



Original Color

70.3770, 9.1240, -0.1560

Protanopia

69.8710, 4.6770, -2.1630

Deuteranopia

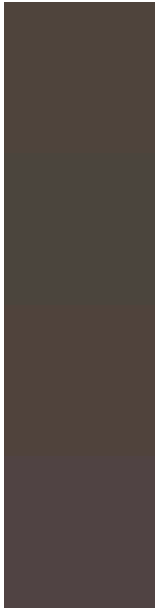
70.0890, 9.9950, 0.5790



Tritanopia

70.7560, 6.7390, 4.5230

Trichromacy



Original Color

70.3770, 9.1240, -0.1560

Protanomaly

69.8820, 6.1440, -1.2160

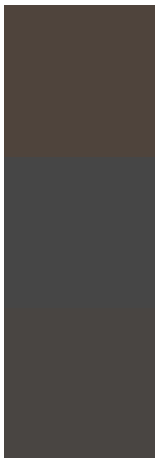
Deuteranomaly

70.0890, 9.9950, 0.5790

Tritanomaly

70.8870, 7.7480, 2.7560

Monochromacy



Original Color

70.3770, 9.1240, -0.1560

Achromatopsia

70.0000, 0.0000, 0.0000

Achromatomaly

69.8540, 3.3470, -0.0850

CSS Examples

Text

The CSS property to change the color of the text to YIQ 70.3770, 9.1240, -0.1560 is called "color". The color property can be set on classes, ids or directly on the HTML element.

This example shows how text in the color `rgb(79, 68, 60)` looks like.

```
.text, #text, p{  
    color:rgb(79, 68, 60)  
}
```

If you want to add a text shadow in that color use the text-shadow property, you can generate a text shadow directly with our [CSS Text Shadow Generator](#).

Here you see how black text with a 4 pixel rgb(79, 68, 60) colored shadow looks like.

```
.shadow{ text-shadow: 4px 4px 2px rgb(79, 68, 60) }
```

Border

The CSS property to change the border of an element to YIQ 70.3770, 9.1240, -0.1560 is called "border". The border property can be set on classes, ids or directly on the HTML element.

This example shows the color as border, it can be applied via the CSS property "border" or "border-color".

```
.border, #border, table{ border:4px solid rgb(79, 68, 60) }
```


If only the border color should be changed use the property `border-color`.

```
.border{ border-color:rgb(79, 68, 60) }
```

If you want to add a box shadow in that color use:

Here you see how a box with a 4 pixel `rgb(79, 68, 60)` colored shadow looks like.

```
.boxshadow{ -moz-box-shadow:4px 4px 4px  
4px rgb(79, 68, 60); -webkit-box-  
shadow:4px 4px 4px 4px rgb(79, 68, 60);  
box-shadow:4px 4px 4px 4px rgb(79, 68, 60)  
}
```

Background

The CSS property to change the background color of an element to YIQ 70.3770, 9.1240, -0.1560 is called "background". The background property can be set on classes, ids or directly on the HTML element.

```
.background, #background, body{  
background: rgb(79, 68, 60) }
```

If only the background color should be changed can be used:

```
.background{ background-color: rgb(79, 68,  
60) }
```

This example shows the color as background, it is applied via the CSS property "background".

To optimize and compress your CSS code, you can use our [online CSS compressor and optimizer](#) based on csstidy. If you want to create a linear or radial gradient as background or border, check our [CSS Gradient Generator](#).

Hey! You found this booklet interesting? Support Converting Colors with the new Membership Option!

The pro membership hides all ads, plus gives you double the colors in the color bucket, and more awesome pro features!

[Learn more, Memberships starting at \\$2.50/m!](#)

**Follow me
on Twitter!**

@ConvertingColor