

Converting Colors

YIQ(71.7320, 24.4820, 7.8580)

Have a look what the booklet for
YIQ(71.7320, 24.4820, 7.8580)
contains.

YIQ(71.7320, 24.4820, 7.8580)	3
<i>Conversions</i>	4
<i>Details</i>	6
<i>Harmonies</i>	12
<i>Previews</i>	24
<i>Color Blindness Simulation</i>	28
<i>CSS Examples</i>	31

Color

**YIQ(71.7320, 24.4820,
7.8580)**

Conversions

Conversions Part 1

Format	Color
Hex	643C3A
RGB	100, 60, 58
RGB Percent	39%, 24%, 23%
CMY	0.6077, 0.7648, 0.7724
CMYK	0.00, 0.40, 0.42, 0.61
HSL	3°, 27%, 31%
HSV	3°, 42%, 39%
XYZ	7.6375, 6.2464, 4.8095
YIQ	71.7320, 24.4820, 7.8580

Conversions

Conversions Part 2

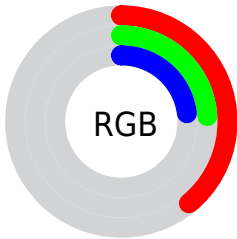
Format	Color
RYB	100, 60, 58
Decimal	6569018
CIELab	30.03, 17.37, 8.66
CIELCh	30, 19.412, 26.483
Yxy	6.2464, 0.4086, 0.3341
Android (android.graphics.Color)	4284759098 (0xFF643C3A)
YUV	71.7320, -6.7699, 24.7910
Hunter-Lab	24.9928, 10.8103, 6.0855

Details

The YIQ color **71.7320, 24.4820, 7.8580** is a dark color, and the websafe version is hex **663333**. A complement of this color would be **86.2680, -24.4820, -7.8580**, and the grayscale version is **72.0000, -0.0000, 0.0000**.

A 20% lighter version of the original color is **120.8140, 27.1870, 8.3950**, and **27.0520, 20.5850, 6.8970** is the 20% darker color. If you saturate the color by 10%, you get **64.7220, 30.4420, 9.9780**, and if you desaturate by 10%, it is **78.7420, 18.5220, 5.7380**.

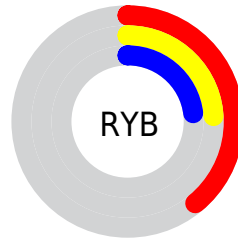
Distribution



Red (39%)

Green (24%)

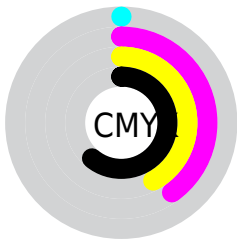
Blue (23%)



Red (39%)

Yellow (24%)

Blue (23%)

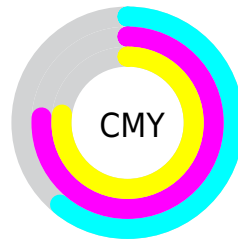


Cyan (0%)

Magenta (40%)

Yellow (42%)

Black (61%)



Cyan (61%)

Magenta (76%)

Yellow (77%)

Brightness & Saturation Gradients

These gradients show how the YIQ color 71.7320, 24.4820, 7.8580 changes by changing the brightness by 10 percent. The first figure shows a shift by +10% for each color and the second figure -10%.

Similar to the brightness gradients but the following saturation gradients show a change of the YIQ color 71.7320, 24.4820, 7.8580 by changing the saturation by 10% instead.

■ 71.7320, 24.4820,
7.8580

■ 71.7320, 24.4820,
7.8580

■ 255.0000, -0.0000,
-0.0000

■ 48.8350, 22.6940,
7.2220

■ 120.8140, 27.1870,
8.3950

■ 27.0520, 20.5850,
6.8970

■ 146.7110, 28.9750,
9.0310

■ 9.3830, 18.1550,
6.8830

■ 173.8960, 29.8920,
8.9320

■ 0.0000, 0.0000,
0.0000

■ 201.1950, 30.4880,
9.1440

■ 225.9170, 25.3990,
7.7590

■ 246.1320, 8.4360,

1.3000

■ 71.7320, 24.4820,
7.8580

■ 71.7320, 24.4820,
7.8580

■ 64.7220, 30.4420,
9.9780

■ 78.7420, 18.5220,
5.7380

■ 58.2990, 36.1270,
11.5750

■ 85.1650, 12.8370,
4.1410

■ 51.2890, 42.0870,
13.6950

■ 92.1750, 6.8770,
2.0210

■ 44.8660, 47.7720,
15.2920

■ 98.5980, 1.1920,
0.4240

■ 37.8560, 53.7320,
17.4120

■ 105.6080, -4.7680,
-1.6960

■ 32.8350, 58.2250,
18.5850

■ 112.0310,
-10.4530, -3.2930

■ 119.0410,
-16.4130, -5.4130

■ 125.4640,
-22.0980, -7.0100

■ 132.4740,
-28.0580, -9.1300

Harmonies

Analogous

The Analogous color harmony consists of three colors that are next to each other on the color wheel.



72.2570, 18.7500, 12.6220



71.7320, 24.4820, 7.8580



70.9180, 23.6580, 0.7620

Triad

The Triadic color harmony groups three colors that are evenly spaced from another and form a triangle on the color wheel.



71.7320, 24.4820, 7.8580



66.0060, -9.3050, -13.0890



68.1190, -25.0800, 2.9840

Complementary

The Complementary color scheme is a pair of colors which are on the opposite of each other on the color wheel.



71.7320, 24.4820, 7.8580



86.2680, -24.4820, -7.8580

Split Complementary

Split-complementary colors differ from the complementary color scheme. The scheme consists of three colors, the original color and two neighbors of the complement color.



62.3080, -39.1540, -6.2740



71.7320, 24.4820, 7.8580



63.0950, -25.6730, -13.8090

Square

The Square scheme is like the rectangle color scheme, but the four colors are evenly spaced on the color wheel.



71.7320, 24.4820, 7.8580



68.3730, 5.7790, -11.1250



59.8360, -40.9410, -12.4370



71.4310, -8.1630, 10.2770

Rectangle

The Rectangle color scheme consists of four colors that form a rectangle on the color wheel.



71.7320, 24.4820, 7.8580



70.0160, 20.2660, -3.8460



59.8360, -40.9410, -12.4370



66.2000, -29.8020, 0.4540

Sweetspot

The Sweet Spot groups the original color and five complimentary colors.



71.7320, 24.4820, 7.8580



118.6700, 9.8570, 3.0810



75.2320, 11.8710, 21.6550



58.9900, 5.9600, 2.1200



194.0000, -0.0000, 0.0000



66.0000, -0.0000, -0.0000

Same Dimension

The Same Dimension uses a secret algorithm to generate beautiful new colors.



71.7320, 24.4820, 7.8580



86.1960, 37.9150, 12.2110



83.4720, 18.9820, -2.6020



47.4950, 2.9800, 1.0600



37.3200, 67.1650, 21.7650



78.8150, 141.2070, 45.5510

Inverse Universe

The Inverse Universe completely reimagines the original color for something new.



86.2680, -24.4820, -7.8580



108.8040, -37.9150, -12.2110



74.5280, -18.9820, 2.6020



49.5050, -2.9800, -1.0600



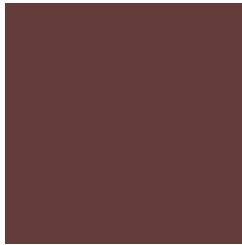
77.0930, -66.8900, -21.2420



163.1850, -141.2070, -45.5510

Previews

White Background



This preview shows how the YIQ color 71.7320, 24.4820, 7.8580 looks on a white background.

Color Contrast Check

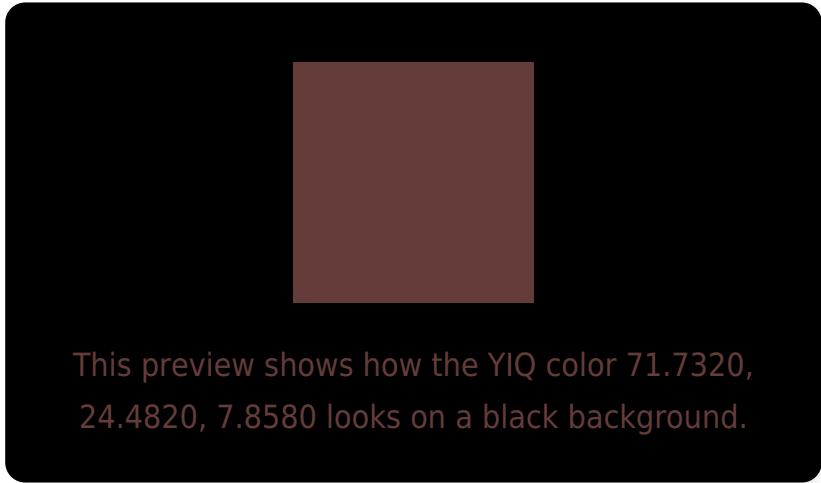
Large Text (above 18pt) WCAG AA ✓ Pass

Any Text WCAG AA ✓ Pass

Large Text (above 18pt) WCAG AAA ✓ Pass

Any Text WCAG AAA ✓ Pass

Black Background



Color Contrast Check

Large Text (above 18pt) WCAG AA × Fail

Any Text WCAG AA × Fail

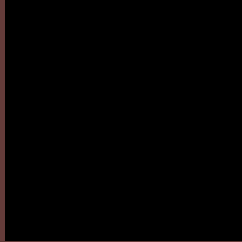
Large Text (above 18pt) WCAG AAA × Fail

Any Text WCAG AAA × Fail

If you want to check with other color combinations, try the [Color Contrast Checker](#).

YIQ 71.7320, 24.4820, 7.8580

Background



This preview shows how black text looks on a background with the YIQ color 71.7320, 24.4820, 7.8580.



This preview shows how white text looks on a background with the YIQ color 71.7320, 24.4820,

Color Blindness Simulation

Color vision deficiency is a very complex topic, and I could not describe the different causes any better than Wikipedia does, so if you want to learn more, you should check out their [article about color blindness](#).

Dichromacy



Original Color

71.7320, 24.4820, 7.8580

Protanopia

70.9850, 4.3560, -1.8520

Deuteranopia

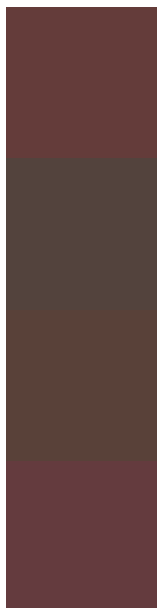
71.2310, 12.4710, -0.2410



Tritanopia

71.8290, 22.8310, 10.2470

Trichromacy



Original Color

71.7320, 24.4820, 7.8580

Protanomaly

71.1000, 11.4620, 1.5260

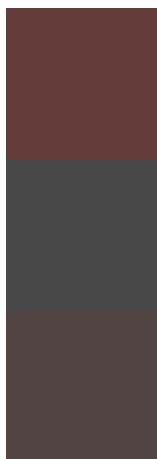
Deuteranomaly

71.2640, 16.8720, 2.6000

Tritanomaly

71.6010, 23.4730, 9.6250

Monochromacy



Original Color

71.7320, 24.4820, 7.8580

Achromatopsia

72.0000, -0.0000, 0.0000

Achromatomaly

72.0720, 8.6650, 2.6570

CSS Examples

Text

The CSS property to change the color of the text to YIQ 71.7320, 24.4820, 7.8580 is called "color". The color property can be set on classes, ids or directly on the HTML element.

This example shows how text in the color `rgb(100, 60, 58)` looks like.

```
.text, #text, p{  
    color:rgb(100, 60, 58)  
}
```

If you want to add a text shadow in that color use the text-shadow property, you can generate a text shadow directly with our [CSS Text Shadow Generator](#).

Here you see how black text with a 4 pixel rgb(100, 60, 58) colored shadow looks like.

```
.shadow{ text-shadow: 4px 4px 2px rgb(100, 60, 58) }
```

Border

The CSS property to change the border of an element to YIQ 71.7320, 24.4820, 7.8580 is called "border". The border property can be set on classes, ids or directly on the HTML element.

This example shows the color as border, it can be applied via the CSS property "border" or "border-color".

```
.border, #border, table{ border:4px solid rgb(100, 60, 58) }
```


If only the border color should be changed use the property `border-color`.

```
.border{ border-color:rgb(100, 60, 58) }
```

If you want to add a box shadow in that color use:

Here you see how a box with a 4 pixel `rgb(100, 60, 58)` colored shadow looks like.

```
.boxshadow{ -moz-box-shadow:4px 4px 4px  
4px rgb(100, 60, 58); -webkit-box-  
shadow:4px 4px 4px 4px rgb(100, 60, 58);  
box-shadow:4px 4px 4px 4px rgb(100, 60,  
58) }
```

Background

The CSS property to change the background color of an element to YIQ 71.7320, 24.4820, 7.8580 is called "background". The background property can be set on classes, ids or directly on the HTML element.

```
.background, #background, body{  
background: rgb(100, 60, 58) }
```

If only the background color should be changed can be used:

```
.background{ background-color: rgb(100, 60,  
58) }
```

This example shows the color as background, it is applied via the CSS property "background".

To optimize and compress your CSS code, you can use our [online CSS compressor and optimizer](#) based on csstidy. If you want to create a linear or radial gradient as background or border, check our [CSS Gradient Generator](#).

Hey! You found this booklet interesting? Support Converting Colors with the new Membership Option!

The pro membership hides all ads, plus gives you double the colors in the color bucket, and more awesome pro features!

[Learn more, Memberships starting at \\$2.50/m!](#)

**Follow me
on Twitter!**

@ConvertingColor