

Converting Colors

YIQ(72.3870, 12.3320, 7.7880)

Have a look what the booklet for
YIQ(72.3870, 12.3320, 7.7880)
contains.

YIQ(72.3870, 12.3320, 7.7880)	3
<i>Conversions</i>	4
<i>Details</i>	6
<i>Harmonies</i>	12
<i>Previews</i>	24
<i>Color Blindness Simulation</i>	28
<i>CSS Examples</i>	31

Color

**YIQ(72.3870, 12.3320,
7.7880)**

Conversions

Conversions Part 1

Format	Color
Hex	594048
RGB	89, 64, 72
RGB Percent	35%, 25%, 28%
CMY	0.6509, 0.7491, 0.7176
CMYK	0.00, 0.28, 0.19, 0.65
HSL	341°, 16%, 30%
HSV	341°, 28%, 35%
XYZ	7.1243, 6.2583, 6.9652
YIQ	72.3870, 12.3320, 7.7880

Conversions

Conversions Part 2

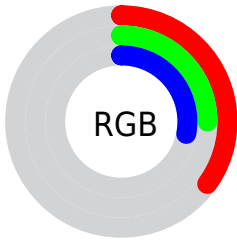
Format	Color
R_{YB}	89, 64, 72
Decimal	5849160
CIE Lab	30.05, 12.30, -0.58
CIE LCh	30, 12.317, 357.290
Yxy	6.2583, 0.3501, 0.3076
Android (android.graphics.Color)	4284039240 (0xFF594048)
YUV	72.3870, -0.1908, 14.5696
Hunter-Lab	25.0166, 7.0545, 1.0038

Details

The YIQ color **72.3870, 12.3320, 7.7880** is a dark color, and the websafe version is hex **333333**. A complement of this color would be **80.6130, -12.3320, -7.7880**, and the grayscale version is **72.0000, -0.0000, 0.0000**.

A 20% lighter version of the original color is **120.9850, 13.5240, 8.2120**, and **28.4900, 10.5440, 7.1520** is the 20% darker color. If you saturate the color by 10%, you get **66.4200, 16.7330, 10.6290**, and if you desaturate by 10%, it is **78.3540, 7.9310, 4.9470**.

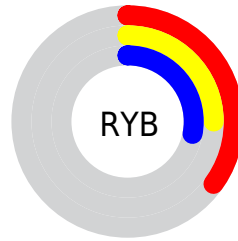
Distribution



 Red (35%)

 Green (25%)

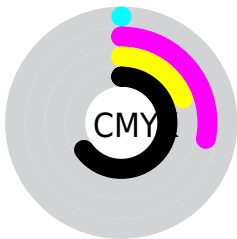
 Blue (28%)



 Red (35%)

 Yellow (25%)

 Blue (28%)

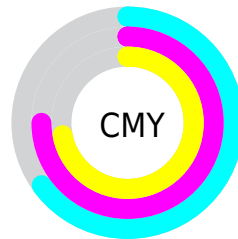


 Cyan (0%)

 Magenta (28%)

 Yellow (19%)

 Black (65%)



 Cyan (65%)

 Magenta (75%)

 Yellow (72%)

Brightness & Saturation Gradients

These gradients show how the YIQ color 72.3870, 12.3320, 7.7880 changes by changing the brightness by 10 percent. The first figure shows a shift by +10% for each color and the second figure -10%.

Similar to the brightness gradients but the following saturation gradients show a change of the YIQ color 72.3870, 12.3320, 7.7880 by changing the saturation by 10% instead.

■ 72.3870, 12.3320,
7.7880

■ 72.3870, 12.3320,
7.7880

■ 255.0000, -0.0000,
-0.0000

■ 49.7890, 11.1400,
7.3640

■ 120.9850, 13.5240,
8.2120

■ 28.4900, 10.5440,
7.1520

■ 146.6970, 14.3950,
8.9470

■ 7.7030, 14.2580,
5.9220

■ 173.6970, 14.3950,
8.9470

■ 0.0000, 0.0000,
0.0000

■ 200.9960, 14.9910,
9.1590

■ 229.2950, 15.5870,
9.3710

■ 250.3040, 2.2000,

4.1840

■ 72.3870, 12.3320,
7.7880

■ 72.3870, 12.3320,
7.7880

■ 66.4200, 16.7330,
10.6290

■ 78.3540, 7.9310,
4.9470

■ 60.4530, 21.1340,
13.4700

■ 84.3210, 3.5300,
2.1060

■ 54.4860, 25.5350,
16.3110

■ 90.2880, -0.8710,
-0.7350

■ 48.5190, 29.9360,
19.1520

■ 96.2550, -5.2720,
-3.5760

■ 42.5520, 34.3370,
21.9930

■ 102.2220, -9.6730,
-6.4170

■ 37.1720, 38.4630,
24.3110

■ 107.6020,
-13.7990, -8.7350

■ 31.2050, 42.8640,
27.1520

■ 113.5690,
-18.2000, -11.5760

■ 29.9170, 43.7350,
27.8870

■ 119.5360,
-22.6010, -14.4170

■ 125.5030,
-27.0020, -17.2580

Harmonies

Analogous

The Analogous color harmony consists of three colors that are next to each other on the color wheel.



72.4940, 4.7210, 8.0570



72.3870, 12.3320, 7.7880



71.5460, 16.1380, 4.8900

Triad

The Triadic color harmony groups three colors that are evenly spaced from another and form a triangle on the color wheel.



72.3870, 12.3320, 7.7880



69.6380, 3.7150, -6.7570



67.9960, -20.5400, -2.2040

Complementary

The Complementary color scheme is a pair of colors which are on the opposite of each other on the color wheel.



72.3870, 12.3320, 7.7880



80.6130, -12.3320, -7.7880

Split Complementary

Split-complementary colors differ from the complementary color scheme. The scheme consists of three colors, the original color and two neighbors of the complement color.



66.4750, -20.6310, -6.0630



72.3870, 12.3320, 7.7880



68.2070, -5.3170, -8.2690

Square

The Square scheme is like the rectangle color scheme, but the four colors are evenly spaced on the color wheel.



72.3870, 12.3320, 7.7880



70.6390, 11.1420, -3.6900



66.9440, -14.7620, -7.8020



69.8660, -14.1220, 2.6300

Rectangle

The Rectangle color scheme consists of four colors that form a rectangle on the color wheel.



72.3870, 12.3320, 7.7880



71.5520, 16.0010, 1.8650



66.9440, -14.7620, -7.8020



67.0560, -20.7690, -3.5610

Sweetspot

The Sweet Spot groups the original color and five complimentary colors.



72.3870, 12.3320, 7.7880



109.0330, 4.4010, 2.8410



71.9330, 2.1070, 11.3790



55.0220, 2.9340, 1.8940



186.0000, -0.0000, -0.0000



59.0000, 0.0000, -0.0000

Same Dimension

The Same Dimension uses a secret algorithm to generate beautiful new colors.



72.3870, 12.3320, 7.7880



89.0290, 19.3920, 12.0000



73.8230, 13.8000, 3.2080



40.3100, 2.0630, 1.1590



35.8690, 52.8580, 33.2580



78.8150, 115.9850, 73.1450

Inverse Universe

The Inverse Universe completely reimagines the original color for something new.



72.3870, 12.3320, 7.7880



89.0290, 19.3920, 12.0000



79.1770, -13.8000, -3.2080



40.3100, 2.0630, 1.1590



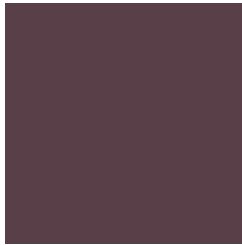
35.8690, 52.8580, 33.2580



78.8150, 115.9850, 73.1450

Previews

White Background



This preview shows how the YIQ color 72.3870, 12.3320, 7.7880 looks on a white background.

Color Contrast Check

Large Text (above 18pt) WCAG AA ✓ Pass

Any Text WCAG AA ✓ Pass

Large Text (above 18pt) WCAG AAA ✓ Pass

Any Text WCAG AAA ✓ Pass

Black Background



This preview shows how the YIQ color 72.3870, 12.3320, 7.7880 looks on a black background.

Color Contrast Check

Large Text (above 18pt) WCAG AA × Fail

Any Text WCAG AA × Fail

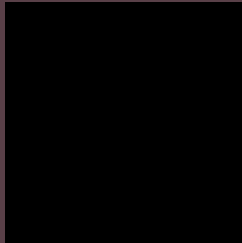
Large Text (above 18pt) WCAG AAA × Fail

Any Text WCAG AAA × Fail

If you want to check with other color combinations, try the [Color Contrast Checker](#).

YIQ 72.3870, 12.3320, 7.7880

Background



This preview shows how black text looks on a background with the YIQ color 72.3870, 12.3320, 7.7880.



This preview shows how white text looks on a background with the YIQ color 72.3870, 12.3320,

Color Blindness Simulation

Color vision deficiency is a very complex topic, and I could not describe the different causes any better than Wikipedia does, so if you want to learn more, you should check out their [article about color blindness](#).

Dichromacy



Original Color

72.3870, 12.3320, 7.7880

Protanopia

71.5700, -1.6050, 1.5550

Deuteranopia

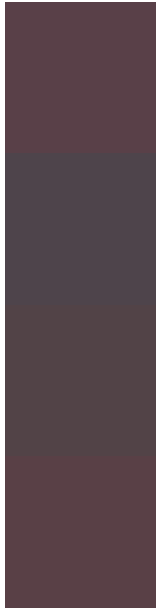
71.9190, 4.7220, 2.5300



Tritanopia

72.0450, 13.2950, 6.8550

Trichromacy



Original Color

72.3870, 12.3320, 7.7880

Protanomaly

71.7880, 3.7130, 4.2970

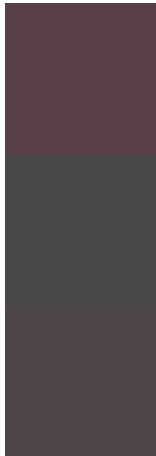
Deuteranomaly

71.9410, 7.6560, 4.4240

Tritanomaly

72.1590, 12.9740, 7.1660

Monochromacy



Original Color

72.3870, 12.3320, 7.7880

Achromatopsia

72.0000, -0.0000, 0.0000

Achromatomaly

72.0330, 4.4010, 2.8410

CSS Examples

Text

The CSS property to change the color of the text to YIQ 72.3870, 12.3320, 7.7880 is called "color". The color property can be set on classes, ids or directly on the HTML element.

This example shows how text in the color `rgb(89, 64, 72)` looks like.

```
.text, #text, p{  
    color:rgb(89, 64, 72)  
}
```

If you want to add a text shadow in that color use the text-shadow property, you can generate a text shadow directly with our [CSS Text Shadow Generator](#).

Here you see how black text with a 4 pixel rgb(89, 64, 72) colored shadow looks like.

```
.shadow{ text-shadow: 4px 4px 2px rgb(89, 64, 72) }
```

Border

The CSS property to change the border of an element to YIQ 72.3870, 12.3320, 7.7880 is called "border". The border property can be set on classes, ids or directly on the HTML element.

This example shows the color as border, it can be applied via the CSS property "border" or "border-color".

```
.border, #border, table{ border:4px solid rgb(89, 64, 72) }
```


If only the border color should be changed use the property `border-color`.

```
.border{ border-color:rgb(89, 64, 72) }
```

If you want to add a box shadow in that color use:

Here you see how a box with a 4 pixel `rgb(89, 64, 72)` colored shadow looks like.

```
.boxshadow{ -moz-box-shadow:4px 4px 4px  
4px rgb(89, 64, 72); -webkit-box-  
shadow:4px 4px 4px 4px rgb(89, 64, 72);  
box-shadow:4px 4px 4px 4px rgb(89, 64, 72)  
}
```

Background

The CSS property to change the background color of an element to YIQ 72.3870, 12.3320, 7.7880 is called "background". The background property can be set on classes, ids or directly on the HTML element.

```
.background, #background, body{  
background: rgb(89, 64, 72) }
```

If only the background color should be changed can be used:

```
.background{ background-color: rgb(89, 64,  
72) }
```

This example shows the color as background, it is applied via the CSS property "background".

To optimize and compress your CSS code, you can use our [online CSS compressor and optimizer](#) based on csstidy. If you want to create a linear or radial gradient as background or border, check our [CSS Gradient Generator](#).

Hey! You found this booklet interesting? Support Converting Colors with the new Membership Option!

The pro membership hides all ads, plus gives you double the colors in the color bucket, and more awesome pro features!

[Learn more, Memberships starting at \\$2.50/m!](#)

**Follow me
on Twitter!**

@ConvertingColor