

Converting Colors

YIQ(73.9130, 22.0540, -3.2100)

Have a look what the booklet for
YIQ(73.9130, 22.0540, -3.2100)
contains.

YIQ(73.9130, 22.0540, -3.2100)	3
<i>Conversions</i>	4
<i>Details</i>	6
<i>Harmonies</i>	12
<i>Previews</i>	24
<i>Color Blindness Simulation</i>	28
<i>CSS Examples</i>	31

Color

**YIQ(73.9130, 22.0540,
-3.2100)**

Conversions

Conversions Part 1

Format	Color
Hex	5D462C
RGB	93, 70, 44
RGB Percent	36%, 27%, 17%
CMY	0.6353, 0.7255, 0.8273
CMYK	0.00, 0.25, 0.53, 0.64
HSL	32°, 36%, 27%
HSV	32°, 53%, 36%
XYZ	7.1599, 6.8888, 3.3379
YIQ	73.9130, 22.0540, -3.2100

Conversions

Conversions Part 2

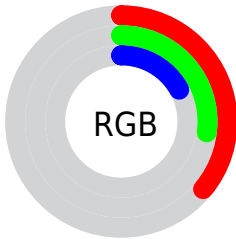
Format	Color
R _Y B	87, 93, 44
Decimal	6112812
CIE Lab	31.55, 6.20, 19.39
CIE LCh	32, 20.360, 72.272
Yxy	6.8888, 0.4118, 0.3962
Android (android.graphics.Color)	4284302892 (0xFF5D462C)
YUV	73.9130, -14.7471, 16.7393
Hunter-Lab	26.2466, 2.7621, 10.8324

Details

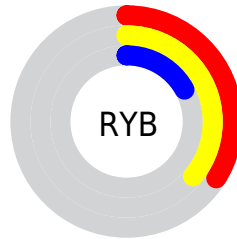
The YIQ color **73.9130, 22.0540, -3.2100** is a dark color, and the websafe version is hex **663333**. A complement of this color would be **63.0870, -22.0540, 3.2100**, and the grayscale version is **74.0000, -0.0000, 0.0000**.

A 20% lighter version of the original color is **122.8810, 25.0800, -2.9840**, and **29.6030, 19.9910, -4.3690** is the 20% darker color. If you saturate the color by 10%, you get **70.5390, 26.0430, -3.9170**, and if you desaturate by 10%, it is **77.2870, 18.0650, -2.5030**.

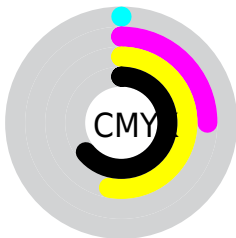
Distribution



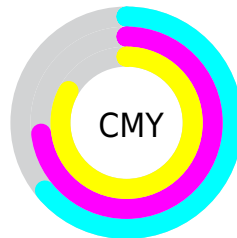
- Red (36%)
- Green (27%)
- Blue (17%)



- Red (34%)
- Yellow (36%)
- Blue (17%)



- Cyan (0%)
- Magenta (25%)
- Yellow (53%)
- Black (64%)



- Cyan (64%)
- Magenta (73%)
- Yellow (83%)

Brightness & Saturation Gradients

These gradients show how the YIQ color 73.9130, 22.0540, -3.2100 changes by changing the brightness by 10 percent. The first figure shows a shift by +10% for each color and the second figure -10%.

Similar to the brightness gradients but the following saturation gradients show a change of the YIQ color 73.9130, 22.0540, -3.2100 by changing the saturation by 10% instead.

■ 73.9130, 22.0540,
-3.2100

■ 73.9130, 22.0540,
-3.2100

■ 255.0000, -0.0000,
-0.0000

■ 51.1300, 19.9450,
-3.5350

■ 122.8810, 25.0800,
-2.9840

■ 29.6030, 19.9910,
-4.3690

■ 149.0660, 25.9970,
-3.0830

■ 6.8660, 12.2410,
3.9290

■ 175.5500, 27.5100,
-2.9700

■ 0.0000, 0.0000,
0.0000

■ 203.4360, 27.8310,
-3.2810

■ 231.0230, 27.5560,
-3.8040

■ 250.6510, 10.8680,

-9.7400

254.5440, 1.2840,
-1.2440

■ 73.9130, 22.0540,
-3.2100

■ 73.9130, 22.0540,
-3.2100

■ 70.5390, 26.0430,
-3.9170

■ 77.2870, 18.0650,
-2.5030

■ 66.4640, 30.6280,
-4.4120

■ 81.3620, 13.4800,
-2.0080

■ 63.0900, 34.6170,
-5.1190

■ 84.7360, 9.4910,
-1.3010

■ 59.7160, 38.6060,
-5.8260

■ 88.1100, 5.5020,
-0.5940

■ 56.5700, 41.9530,
-5.9110

■ 92.1850, 0.9170,
-0.0990

■ 95.5590, -3.0720,
0.6080

■ 99.5200, -7.3360,
0.7920

■ 102.8940,
-11.3250, 1.4990

■ 106.3820,
-15.6350, 2.5170

Harmonies

Analogous

The Analogous color harmony consists of three colors that are next to each other on the color wheel.



75.1080, 26.1790, 4.6350



73.9130, 22.0540, -3.2100



72.2490, 12.0600, -9.3160

Triad

The Triadic color harmony groups three colors that are evenly spaced from another and form a triangle on the color wheel.



73.9130, 22.0540, -3.2100



63.5220, -37.1810, -14.5010



76.2040, -0.0940, 12.7220

Complementary

The Complementary color scheme is a pair of colors which are on the opposite of each other on the color wheel.



73.9130, 22.0540, -3.2100



63.0870, -22.0540, 3.2100

Split Complementary

Split-complementary colors differ from the complementary color scheme. The scheme consists of three colors, the original color and two neighbors of the complement color.



73.9460, -17.1030, 7.0970



73.9130, 22.0540, -3.2100



62.2530, -46.4890, -11.0090

Square

The Square scheme is like the rectangle color scheme, but the four colors are evenly spaced on the color wheel.



73.9130, 22.0540, -3.2100



67.6890, -18.6580, -14.2900



68.6940, -34.2490, -1.5530



76.1580, 14.7150, 14.1630

Rectangle

The Rectangle color scheme consists of four colors that form a rectangle on the color wheel.



73.9130, 22.0540, -3.2100



71.1770, 3.3950, -11.9730



68.6940, -34.2490, -1.5530



75.9260, -5.1830, 11.3370

Sweetspot

The Sweet Spot groups the original color and five complimentary colors.



73.9130, 22.0540, -3.2100



112.5510, 8.5740, -1.2020



61.3870, 21.5000, 17.8520



56.8110, 4.9060, -0.8060



189.0000, -0.0000, -0.0000



61.0000, 0.0000, -0.0000

Same Dimension

The Same Dimension uses a secret algorithm to generate beautiful new colors.



73.9130, 22.0540, -3.2100



90.2040, 34.2960, -4.8080



87.1150, 15.1330, -15.4510



44.2560, 2.1550, -0.5090



66.9360, 49.6100, -7.0140



144.8250, 106.6020, -15.6540

Inverse Universe

The Inverse Universe completely reimagines the original color for something new.



63.0870, -22.0540, 3.2100



73.7960, -34.2960, 4.8080



49.8850, -15.1330, 15.4510



42.7440, -2.1550, 0.5090



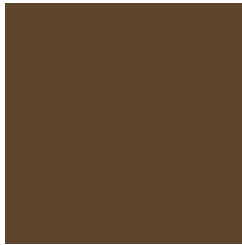
43.0640, -49.6100, 7.0140



92.1750, -106.6020, 15.6540

Previews

White Background



This preview shows how the YIQ color 73.9130, 22.0540, -3.2100 looks on a white background.

Color Contrast Check

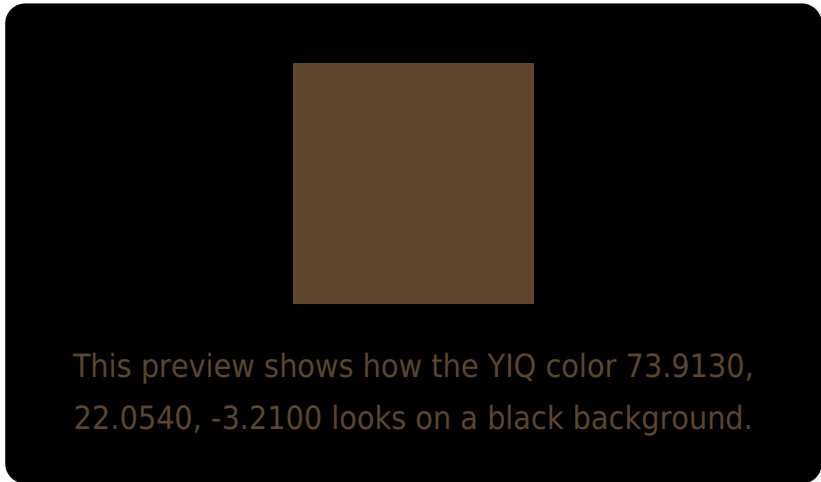
Large Text (above 18pt) WCAG AA ✓ Pass

Any Text WCAG AA ✓ Pass

Large Text (above 18pt) WCAG AAA ✓ Pass

Any Text WCAG AAA ✓ Pass

Black Background



Color Contrast Check

Large Text (above 18pt) WCAG AA × Fail

Any Text WCAG AA × Fail

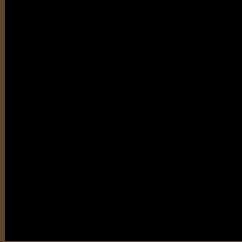
Large Text (above 18pt) WCAG AAA × Fail

Any Text WCAG AAA × Fail

If you want to check with other color combinations, try the [Color Contrast Checker](#).

YIQ 73.9130, 22.0540, -3.2100

Background



This preview shows how black text looks on a background with the YIQ color 73.9130, 22.0540, -3.2100.



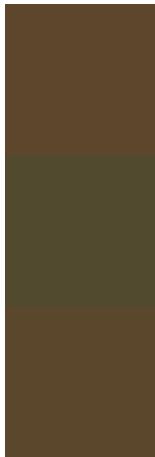
This preview shows how white text looks on a background with the YIQ color 73.9130, 22.0540,

-3.2100.

Color Blindness Simulation

Color vision deficiency is a very complex topic, and I could not describe the different causes any better than Wikipedia does, so if you want to learn more, you should check out their [article about color blindness](#).

Dichromacy



Original Color

73.9130, 22.0540, -3.2100

Protanopia

72.9010, 13.1600, -7.2240

Deuteranopia

73.9020, 20.5870, -4.1570



Tritanopia

75.9420, 15.0830, 7.4910

Trichromacy



Original Color

73.9130, 22.0540, -3.2100

Protanomaly

73.3960, 16.1400, -6.1640

Deuteranomaly

74.2010, 21.1830, -3.9450

Tritanomaly

75.0900, 17.4220, 3.6460

Monochromacy



Original Color

73.9130, 22.0540, -3.2100

Achromatopsia

74.0000, -0.0000, 0.0000

Achromatomaly

74.2520, 7.9780, -1.4140

CSS Examples

Text

The CSS property to change the color of the text to YIQ 73.9130, 22.0540, -3.2100 is called "color". The color property can be set on classes, ids or directly on the HTML element.

This example shows how text in the color `rgb(93, 70, 44)` looks like.

```
.text, #text, p{  
    color:rgb(93, 70, 44)  
}
```

If you want to add a text shadow in that color use the text-shadow property, you can generate a text shadow directly with our [CSS Text Shadow Generator](#).

Here you see how black text with a 4 pixel rgb(93, 70, 44) colored shadow looks like.

```
.shadow{ text-shadow: 4px 4px 2px rgb(93, 70, 44) }
```

Border

The CSS property to change the border of an element to YIQ 73.9130, 22.0540, -3.2100 is called "border". The border property can be set on classes, ids or directly on the HTML element.

This example shows the color as border, it can be applied via the CSS property "border" or "border-color".

```
.border, #border, table{ border:4px solid rgb(93, 70, 44) }
```


If only the border color should be changed use the property `border-color`.

```
.border{ border-color:rgb(93, 70, 44) }
```

If you want to add a box shadow in that color use:

Here you see how a box with a 4 pixel `rgb(93, 70, 44)` colored shadow looks like.

```
.boxshadow{ -moz-box-shadow:4px 4px 4px  
4px rgb(93, 70, 44); -webkit-box-  
shadow:4px 4px 4px 4px rgb(93, 70, 44);  
box-shadow:4px 4px 4px 4px rgb(93, 70, 44)  
}
```

Background

The CSS property to change the background color of an element to YIQ 73.9130, 22.0540, -3.2100 is called "background". The background property can be set on classes, ids or directly on the HTML element.

```
.background, #background, body{  
background: rgb(93, 70, 44) }
```

If only the background color should be changed can be used:

```
.background{ background-color: rgb(93, 70,  
44) }
```

This example shows the color as background, it is applied via the CSS property "background".

To optimize and compress your CSS code, you can use our [online CSS compressor and optimizer](#) based on csstidy. If you want to create a linear or radial gradient as background or border, check our [CSS Gradient Generator](#).

Hey! You found this booklet interesting? Support Converting Colors with the new Membership Option!

The pro membership hides all ads, plus gives you double the colors in the color bucket, and more awesome pro features!

[Learn more, Memberships starting at \\$2.50/m!](#)

**Follow me
on Twitter!**

@ConvertingColor