

Converting Colors

YIQ(74.6650, 8.2530, -0.8910)

Have a look what the booklet for
YIQ(74.6650, 8.2530, -0.8910)
contains.

YIQ(74.6650, 8.2530, -0.8910)	3
<i>Conversions</i>	4
<i>Details</i>	6
<i>Harmonies</i>	12
<i>Previews</i>	24
<i>Color Blindness Simulation</i>	28
<i>CSS Examples</i>	31

Color

**YIQ(74.6650, 8.2530,
-0.8910)**

Conversions

Conversions Part 1

Format	Color
Hex	524940
RGB	82, 73, 64
RGB Percent	32%, 29%, 25%
CMY	0.6784, 0.7137, 0.7490
CMYK	0.00, 0.11, 0.22, 0.68
HSL	30°, 12%, 29%
HSV	30°, 22%, 32%
XYZ	6.7880, 6.9289, 5.8316
YIQ	74.6650, 8.2530, -0.8910

Conversions

Conversions Part 2

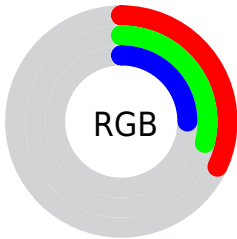
Format	Color
RYB	82, 82, 64
Decimal	5392704
CIELab	31.64, 2.08, 6.76
CIELCh	32, 7.070, 72.875
Yxy	6.9289, 0.3472, 0.3544
Android (android.graphics.Color)	4283582784 (0xFF524940)
YUV	74.6650, -5.2578, 6.4328
Hunter-Lab	26.3228, -0.0339, 5.2906

Details

The YIQ color **74.6650, 8.2530, -0.8910** is a dark color, and the websafe version is hex **333333**. A complement of this color would be **71.3350, -8.2530, 0.8910**, and the grayscale version is **75.0000, -0.0000, -0.0000**.

A 20% lighter version of the original color is **123.8500, 9.1700, -0.9900**, and **31.1810, 6.7400, -1.0040** is the 20% darker color. If you saturate the color by 10%, you get **71.4050, 11.9210, -1.2870**, and if you desaturate by 10%, it is **77.9250, 4.5850, -0.4950**.

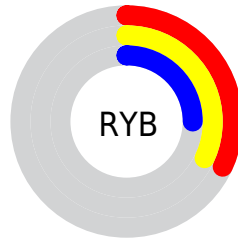
Distribution



Red (32%)

Green (29%)

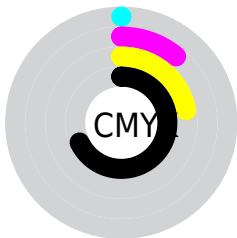
Blue (25%)



Red (32%)

Yellow (32%)

Blue (25%)

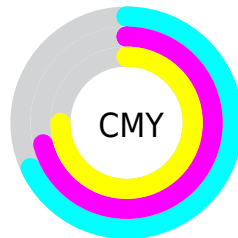


Cyan (0%)

Magenta (11%)

Yellow (22%)

Black (68%)



Cyan (68%)

Magenta (71%)

Yellow (75%)

Brightness & Saturation Gradients

These gradients show how the YIQ color 74.6650, 8.2530, -0.8910 changes by changing the brightness by 10 percent. The first figure shows a shift by +10% for each color and the second figure -10%.

Similar to the brightness gradients but the following saturation gradients show a change of the YIQ color 74.6650, 8.2530, -0.8910 by changing the saturation by 10% instead.

■ 74.6650, 8.2530,
-0.8910

■ 74.6650, 8.2530,
-0.8910

■ 255.0000, -0.0000,
-0.0000

■ 52.3660, 7.6570,
-1.1030

■ 123.8500, 9.1700,
-0.9900

■ 31.1810, 6.7400,
-1.0040

■ 149.1490, 9.7660,
-0.7780

■ 6.5340, 7.2440,
0.8760

■ 176.0350, 10.0870,
-1.0890

■ 0.0000, 0.0000,
0.0000

■ 203.0350, 10.0870,
-1.0890

■ 231.3340, 10.6830,
-0.8770

■ 254.0880, 2.5680,

-2.4880

■ 74.6650, 8.2530,
-0.8910

■ 74.6650, 8.2530,
-0.8910

■ 71.4050, 11.9210,
-1.2870

■ 77.9250, 4.5850,
-0.4950

■ 68.1450, 15.5890,
-1.6830

■ 81.1850, 0.9170,
-0.0990

■ 64.7710, 19.5780,
-2.3900

■ 84.5590, -3.0720,
0.6080

■ 61.5110, 23.2460,
-2.7860

■ 87.8190, -6.7400,
1.0040

■ 57.6640, 27.1890,
-2.6590

■ 91.6660, -10.6830,
0.8770

■ 54.4040, 30.8570,
-3.0550

■ 94.9260, -14.3510,
1.2730

■ 51.1440, 34.5250,
-3.4510

■ 98.1860, -18.0190,
1.6690

■ 48.5850, 37.5970,
-4.0590

■ 101.5600,
-22.0080, 2.3760

■ 104.8200,
-25.6760, 2.7720

Harmonies

Analogous

The Analogous color harmony consists of three colors that are next to each other on the color wheel.



75.0290, 10.2240, 1.9360



74.6650, 8.2530, -0.8910



74.0450, 4.1270, -3.2090

Triad

The Triadic color harmony groups three colors that are evenly spaced from another and form a triangle on the color wheel.



74.6650, 8.2530, -0.8910



72.8030, -9.8110, -3.9150



75.0480, 0.0450, 4.6930

Complementary

The Complementary color scheme is a pair of colors which are on the opposite of each other on the color wheel.



74.6650, 8.2530, -0.8910



71.3350, -8.2530, 0.8910

Split Complementary

Split-complementary colors differ from the complementary color scheme. The scheme consists of three colors, the original color and two neighbors of the complement color.



74.6560, -4.7230, 2.9970



74.6650, 8.2530, -0.8910



72.7860, -11.1410, -1.8370

Square

The Square scheme is like the rectangle color scheme, but the four colors are evenly spaced on the color wheel.



74.6650, 8.2530, -0.8910



72.4290, -5.8220, -4.6220



73.7370, -9.4450, 0.4670



75.6850, 5.5010, 4.9330

Rectangle

The Rectangle color scheme consists of four colors that form a rectangle on the color wheel.



74.6650, 8.2530, -0.8910



73.5500, 1.1470, -4.2690



73.7370, -9.4450, 0.4670



75.1510, -1.7430, 4.0570

Sweetspot

The Sweet Spot groups the original color and five complimentary colors.



74.6650, 8.2530, -0.8910



103.8540, 3.3470, -0.0850



70.4080, 7.8390, 6.6150



51.6690, 2.4300, 0.0140



181.0000, -0.0000, 0.0000



54.0000, -0.0000, 0.0000

Same Dimension

The Same Dimension uses a secret algorithm to generate beautiful new colors.



74.6650, 8.2530, -0.8910



95.5900, 12.8380, -1.3860



79.9480, 5.7780, -5.5980



39.3700, 1.8340, -0.1980



61.9190, 48.2800, -4.9360



137.4600, 106.3720, -11.4840

Inverse Universe

The Inverse Universe completely reimagines the original color for something new.



71.3350, -8.2530, 0.8910



90.4100, -12.8380, 1.3860



66.0520, -5.7780, 5.5980



38.6300, -1.8340, 0.1980



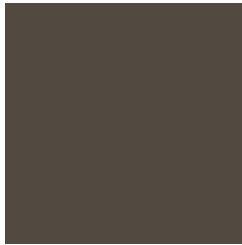
42.4940, -48.0050, 5.4590



94.5400, -106.3720, 11.4840

Previews

White Background



This preview shows how the YIQ color 74.6650, 8.2530, -0.8910 looks on a white background.

Color Contrast Check

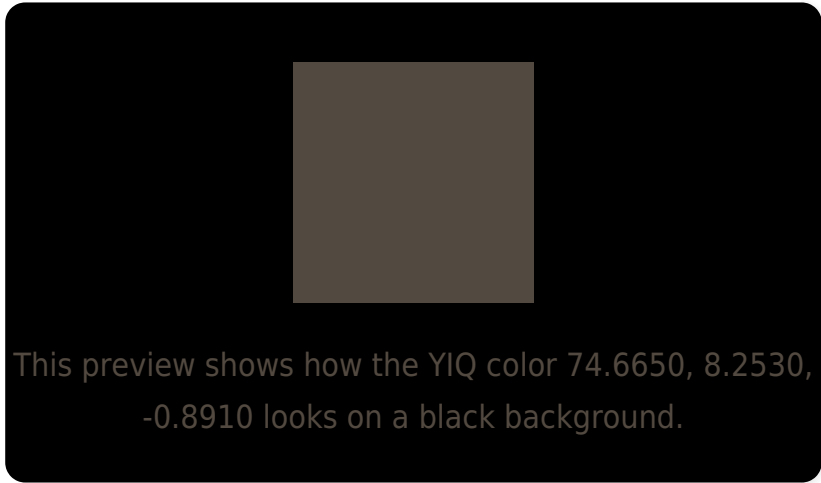
Large Text (above 18pt) WCAG AA ✓ Pass

Any Text WCAG AA ✓ Pass

Large Text (above 18pt) WCAG AAA ✓ Pass

Any Text WCAG AAA ✓ Pass

Black Background



Color Contrast Check

Large Text (above 18pt) WCAG AA × Fail

Any Text WCAG AA × Fail

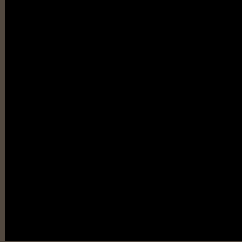
Large Text (above 18pt) WCAG AAA × Fail

Any Text WCAG AAA × Fail

If you want to check with other color combinations, try the [Color Contrast Checker](#).

YIQ 74.6650, 8.2530, -0.8910

Background



This preview shows how black text looks on a background with the YIQ color 74.6650, 8.2530, -0.8910.



This preview shows how white text looks on a background with the YIQ color 74.6650, 8.2530,

-0.8910.

Color Blindness Simulation

Color vision deficiency is a very complex topic, and I could not describe the different causes any better than Wikipedia does, so if you want to learn more, you should check out their [article about color blindness](#).

Dichromacy



Original Color

74.6650, 8.2530, -0.8910

Protanopia

74.1700, 5.2730, -1.9510

Deuteranopia

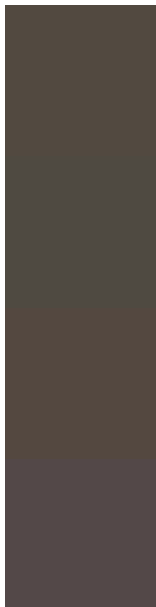
74.9750, 10.3160, 0.2680



Tritanopia

75.5710, 5.8220, 4.6220

Trichromacy



Original Color

74.6650, 8.2530, -0.8910

Protanomaly

74.4690, 5.8690, -1.7390

Deuteranomaly

74.6760, 9.7200, 0.0560

Tritanomaly

75.2890, 6.5560, 2.3320

Monochromacy



Original Color

74.6650, 8.2530, -0.8910

Achromatopsia

75.0000, -0.0000, -0.0000

Achromatomaly

74.8540, 3.3470, -0.0850

CSS Examples

Text

The CSS property to change the color of the text to YIQ 74.6650, 8.2530, -0.8910 is called "color". The color property can be set on classes, ids or directly on the HTML element.

This example shows how text in the color `rgb(82, 73, 64)` looks like.

```
.text, #text, p{  
    color:rgb(82, 73, 64)  
}
```

If you want to add a text shadow in that color use the text-shadow property, you can generate a text shadow directly with our [CSS Text Shadow Generator](#).

Here you see how black text with a 4 pixel rgb(82, 73, 64) colored shadow looks like.

```
.shadow{ text-shadow: 4px 4px 2px rgb(82, 73, 64) }
```

Border

The CSS property to change the border of an element to YIQ 74.6650, 8.2530, -0.8910 is called "border". The border property can be set on classes, ids or directly on the HTML element.

This example shows the color as border, it can be applied via the CSS property "border" or "border-color".

```
.border, #border, table{ border:4px solid rgb(82, 73, 64) }
```


If only the border color should be changed use the property `border-color`.

```
.border{ border-color:rgb(82, 73, 64) }
```

If you want to add a box shadow in that color use:

Here you see how a box with a 4 pixel `rgb(82, 73, 64)` colored shadow looks like.

```
.boxshadow{ -moz-box-shadow:4px 4px 4px  
4px rgb(82, 73, 64); -webkit-box-  
shadow:4px 4px 4px 4px rgb(82, 73, 64);  
box-shadow:4px 4px 4px 4px rgb(82, 73, 64)  
}
```

Background

The CSS property to change the background color of an element to YIQ 74.6650, 8.2530, -0.8910 is called "background". The background property can be set on classes, ids or directly on the HTML element.

```
.background, #background, body{  
background: rgb(82, 73, 64) }
```

If only the background color should be changed can be used:

```
.background{ background-color: rgb(82, 73,  
64) }
```

This example shows the color as background, it is applied via the CSS property "background".

To optimize and compress your CSS code, you can use our [online CSS compressor and optimizer](#) based on csstidy. If you want to create a linear or radial gradient as background or border, check our [CSS Gradient Generator](#).

Hey! You found this booklet interesting? Support Converting Colors with the new Membership Option!

The pro membership hides all ads, plus gives you double the colors in the color bucket, and more awesome pro features!

[Learn more, Memberships starting at \\$2.50/m!](#)

**Follow me
on Twitter!**

@ConvertingColor