

Converting Colors

YIQ(76.6930, 20.2180, 8.0420)

Have a look what the booklet for
YIQ(76.6930, 20.2180, 8.0420)
contains.

YIQ(76.6930, 20.2180, 8.0420)	3
<i>Conversions</i>	4
<i>Details</i>	6
<i>Harmonies</i>	12
<i>Previews</i>	24
<i>Color Blindness Simulation</i>	28
<i>CSS Examples</i>	31

Color

**YIQ(76.6930, 20.2180,
8.0420)**

Conversions

Conversions Part 1

Format	Color
Hex	654244
RGB	101, 66, 68
RGB Percent	40%, 26%, 27%
CMY	0.6038, 0.7412, 0.7333
CMYK	0.00, 0.35, 0.33, 0.60
HSL	357°, 21%, 33%
HSV	357°, 35%, 40%
XYZ	8.3606, 7.0803, 6.3980
YIQ	76.6930, 20.2180, 8.0420

Conversions

Conversions Part 2

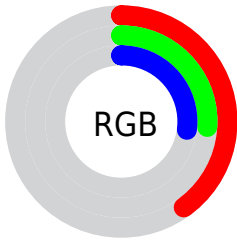
Format	Color
R_{YB}	101, 66, 68
Decimal	6636100
CIE _{Lab}	31.99, 15.52, 4.99
CIE _{LCh}	32, 16.299, 17.809
Yxy	7.0803, 0.3828, 0.3242
Android (android.graphics.Color)	4284826180 (0xFF654244)
YUV	76.6930, -4.2856, 21.3172
Hunter-Lab	26.6088, 9.5202, 4.3700

Details

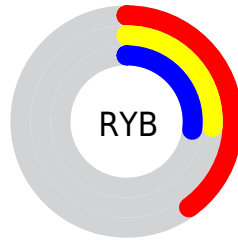
The YIQ color **76.6930, 20.2180, 8.0420** is a dark color, and the websafe version is hex **663333**. A complement of this color would be **90.3070, -20.2180, -8.0420**, and the grayscale version is **77.0000, -0.0000, -0.0000**.

A 20% lighter version of the original color is **125.8890, 22.6020, 8.8900**, and **31.6110, 17.5130, 7.5050** is the 20% darker color. If you saturate the color by 10%, you get **69.7970, 25.8570, 10.4730**, and if you desaturate by 10%, it is **83.7030, 14.2580, 5.9220**.

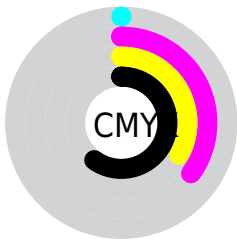
Distribution



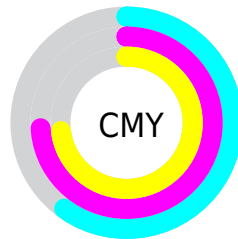
- Red (40%)
- Green (26%)
- Blue (27%)



- Red (40%)
- Yellow (26%)
- Blue (27%)



- Cyan (0%)
- Magenta (35%)
- Yellow (33%)
- Black (60%)



- Cyan (60%)
- Magenta (74%)
- Yellow (73%)

Brightness & Saturation Gradients

These gradients show how the YIQ color 76.6930, 20.2180, 8.0420 changes by changing the brightness by 10 percent. The first figure shows a shift by +10% for each color and the second figure -10%.

Similar to the brightness gradients but the following saturation gradients show a change of the YIQ color 76.6930, 20.2180, 8.0420 by changing the saturation by 10% instead.

■ 76.6930, 20.2180,
8.0420

■ 76.6930, 20.2180,
8.0420

■ 255.0000, -0.0000,
-0.0000

■ 53.7960, 18.4300,
7.4060

■ 125.8890, 22.6020,
8.8900

■ 31.6110, 17.5130,
7.5050

■ 152.1880, 23.1980,
9.1020

■ 10.1660, 20.2640,
7.2080

■ 178.7860, 24.3900,
9.5260

■ 0.0000, 0.0000,
0.0000

■ 206.9710, 25.3070,
9.4270

■ 231.9810, 19.3470,
7.3070

■ 251.7230, 2.3380,

1.6820

■ 76.6930, 20.2180,
8.0420

■ 76.6930, 20.2180,
8.0420

■ 69.7970, 25.8570,
10.4730

■ 83.7030, 14.2580,
5.9220

■ 62.7870, 31.8170,
12.5930

■ 90.5990, 8.6190,
3.4910

■ 55.7770, 37.7770,
14.7130

■ 97.6090, 2.6590,
1.3710

■ 48.8810, 43.4160,
17.1440

■ 104.5050, -2.9800,
-1.0600

■ 41.2840, 49.6510,
19.7870

■ 111.5150, -8.9400,
-3.1800

■ 34.3880, 55.2900,
22.2180

■ 118.9980,
-14.8540, -6.1340

■ 30.8830, 58.2700,
23.2780

■ 126.0080,
-20.8140, -8.2540

■ 132.9040,
-26.4530, -10.6850

■ 139.9140,
-32.4130, -12.8050

Harmonies

Analogous

The Analogous color harmony consists of three colors that are next to each other on the color wheel.



76.9790, 13.6610, 11.2370



76.6930, 20.2180, 8.0420



76.3030, 21.1360, 2.4160

Triad

The Triadic color harmony groups three colors that are evenly spaced from another and form a triangle on the color wheel.



76.6930, 20.2180, 8.0420



72.1100, -3.6660, -10.6580



72.4350, -23.1540, 1.1180

Complementary

The Complementary color scheme is a pair of colors which are on the opposite of each other on the color wheel.



76.6930, 20.2180, 8.0420



90.3070, -20.2180, -8.0420

Split Complementary

Split-complementary colors differ from the complementary color scheme. The scheme consists of three colors, the original color and two neighbors of the complement color.



69.3260, -30.3970, -5.2850



76.6930, 20.2180, 8.0420



70.0530, -16.6870, -11.4630

Square

The Square scheme is like the rectangle color scheme, but the four colors are evenly spaced on the color wheel.



76.6930, 20.2180, 8.0420



73.7370, 7.7500, -8.2980



68.3600, -27.7370, -9.4410



75.6540, -10.4090, 6.9270

Rectangle

The Rectangle color scheme consists of four colors that form a rectangle on the color wheel.



76.6930, 20.2180, 8.0420



75.4120, 19.2110, -1.2450



68.3600, -27.7370, -9.4410



71.4130, -26.0880, -0.7760

Sweetspot

The Sweet Spot groups the original color and five complimentary colors.



76.6930, 20.2180, 8.0420



123.3000, 8.0230, 3.2790



79.8570, 8.4330, 17.8810



60.5060, 4.4470, 2.0070



194.0000, -0.0000, 0.0000



66.0000, -0.0000, -0.0000

Same Dimension

The Same Dimension uses a secret algorithm to generate beautiful new colors.



76.6930, 20.2180, 8.0420



94.0860, 32.4130, 12.8050



85.2700, 16.7350, -0.4250



47.4950, 2.9800, 1.0600



35.1830, 66.2930, 26.5570



73.9540, 139.7380, 55.6580

Inverse Universe

The Inverse Universe completely reimagines the original color for something new.



76.6930, 20.2180, 8.0420



94.0860, 32.4130, 12.8050



81.7300, -16.7350, 0.4250



47.4950, 2.9800, 1.0600



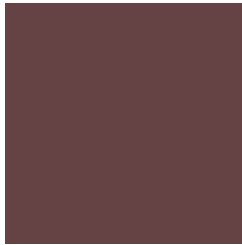
35.1830, 66.2930, 26.5570



73.9540, 139.7380, 55.6580

Previews

White Background



This preview shows how the YIQ color 76.6930, 20.2180, 8.0420 looks on a white background.

Color Contrast Check

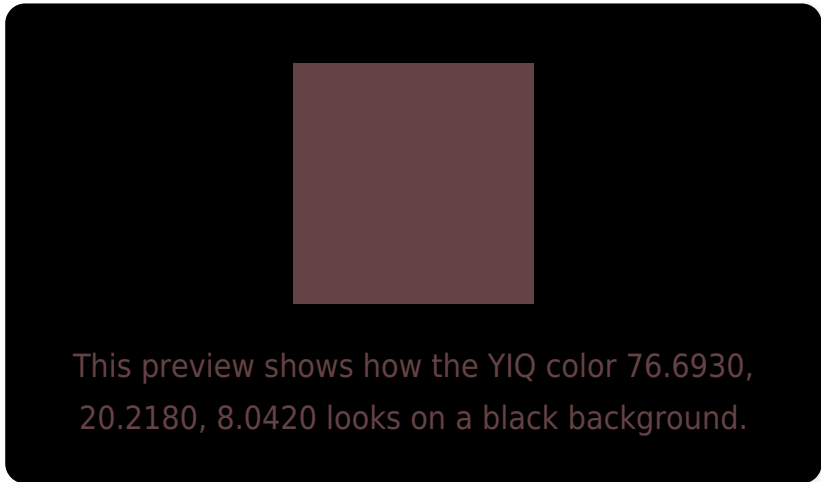
Large Text (above 18pt) WCAG AA ✓ Pass

Any Text WCAG AA ✓ Pass

Large Text (above 18pt) WCAG AAA ✓ Pass

Any Text WCAG AAA ✓ Pass

Black Background



Color Contrast Check

Large Text (above 18pt) WCAG AA × Fail

Any Text WCAG AA × Fail

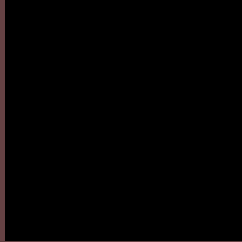
Large Text (above 18pt) WCAG AAA × Fail

Any Text WCAG AAA × Fail

If you want to check with other color combinations, try the [Color Contrast Checker](#).

YIQ 76.6930, 20.2180, 8.0420

Background



This preview shows how black text looks on a background with the YIQ color 76.6930, 20.2180, 8.0420.



This preview shows how white text looks on a background with the YIQ color 76.6930, 20.2180,

Color Blindness Simulation

Color vision deficiency is a very complex topic, and I could not describe the different causes any better than Wikipedia does, so if you want to learn more, you should check out their [article about color blindness](#).

Dichromacy



Original Color

76.6930, 20.2180, 8.0420

Protanopia

75.6690, 2.4300, 0.0140

Deuteranopia

76.2030, 9.6740, 0.8900



Tritanopia

77.0350, 19.2550, 8.9750

Trichromacy



Original Color

76.6930, 20.2180, 8.0420

Protanomaly

76.0720, 8.6650, 2.6570

Deuteranomaly

75.9370, 13.4790, 3.5190

Tritanomaly

76.9210, 19.5760, 8.6640

Monochromacy



Original Color

76.6930, 20.2180, 8.0420

Achromatopsia

77.0000, -0.0000, -0.0000

Achromatomaly

77.0010, 7.4270, 3.0670

CSS Examples

Text

The CSS property to change the color of the text to YIQ 76.6930, 20.2180, 8.0420 is called "color". The color property can be set on classes, ids or directly on the HTML element.

This example shows how text in the color `rgb(101, 66, 68)` looks like.

```
.text, #text, p{  
    color:rgb(101, 66, 68)  
}
```

If you want to add a text shadow in that color use the text-shadow property, you can generate a text shadow directly with our [CSS Text Shadow Generator](#).

Here you see how black text with a 4 pixel rgb(101, 66, 68) colored shadow looks like.

```
.shadow{ text-shadow: 4px 4px 2px rgb(101, 66, 68) }
```

Border

The CSS property to change the border of an element to YIQ 76.6930, 20.2180, 8.0420 is called "border". The border property can be set on classes, ids or directly on the HTML element.

This example shows the color as border, it can be applied via the CSS property "border" or "border-color".

```
.border, #border, table{ border:4px solid rgb(101, 66, 68) }
```


If only the border color should be changed use the property `border-color`.

```
.border{ border-color:rgb(101, 66, 68) }
```

If you want to add a box shadow in that color use:

Here you see how a box with a 4 pixel `rgb(101, 66, 68)` colored shadow looks like.

```
.boxshadow{ -moz-box-shadow:4px 4px 4px  
4px rgb(101, 66, 68); -webkit-box-  
shadow:4px 4px 4px 4px rgb(101, 66, 68);  
box-shadow:4px 4px 4px 4px rgb(101, 66,  
68) }
```

Background

The CSS property to change the background color of an element to YIQ 76.6930, 20.2180, 8.0420 is called "background". The background property can be set on classes, ids or directly on the HTML element.

```
.background, #background, body{  
background: rgb(101, 66, 68) }
```

If only the background color should be changed can be used:

```
.background{ background-color: rgb(101, 66,  
68) }
```

This example shows the color as background, it is applied via the CSS property "background".

To optimize and compress your CSS code, you can use our [online CSS compressor and optimizer](#) based on csstidy. If you want to create a linear or radial gradient as background or border, check our [CSS Gradient Generator](#).

Hey! You found this booklet interesting? Support Converting Colors with the new Membership Option!

The pro membership hides all ads, plus gives you double the colors in the color bucket, and more awesome pro features!

[Learn more, Memberships starting at \\$2.50/m!](#)

**Follow me
on Twitter!**

@ConvertingColor