

Converting Colors

YIQ(77.1590, 12.9740, 7.1660)

Have a look what the booklet for
YIQ(77.1590, 12.9740, 7.1660)
contains.

YIQ(77.1590, 12.9740, 7.1660)	3
<i>Conversions</i>	4
<i>Details</i>	6
<i>Harmonies</i>	12
<i>Previews</i>	24
<i>Color Blindness Simulation</i>	28
<i>CSS Examples</i>	31

Color

**YIQ(77.1590, 12.9740,
7.1660)**

Conversions

Conversions Part 1

Format	Color
Hex	5E454B
RGB	94, 69, 75
RGB Percent	37%, 27%, 29%
CMY	0.6313, 0.7294, 0.7058
CMYK	0.00, 0.27, 0.20, 0.63
HSL	346°, 15%, 32%
HSV	346°, 27%, 37%
XYZ	8.0156, 7.1437, 7.6151
YIQ	77.1590, 12.9740, 7.1660

Conversions

Conversions Part 2

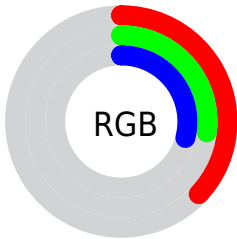
Format	Color
RYB	94, 69, 75
Decimal	6178123
CIELab	32.13, 11.80, 0.58
CIElCh	32, 11.815, 2.833
Yxy	7.1437, 0.3520, 0.3137
Android (android.graphics.Color)	4284368203 (0xFF5E454B)
YUV	77.1590, -1.0644, 14.7696
Hunter-Lab	26.7276, 6.7590, 1.8166

Details

The YIQ color **77.1590, 12.9740, 7.1660** is a dark color, and the websafe version is hex **663333**. A complement of this color would be **85.8410, -12.9740, -7.1660**, and the grayscale version is **77.0000, -0.0000, -0.0000**.

A 20% lighter version of the original color is **126.1700, 14.4410, 8.1130**, and **32.8490, 10.9110, 6.0070** is the 20% darker color. If you saturate the color by 10%, you get **71.0780, 17.6960, 9.6960**, and if you desaturate by 10%, it is **83.2400, 8.2520, 4.6360**.

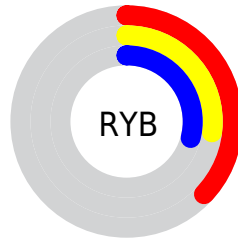
Distribution



 Red (37%)

 Green (27%)

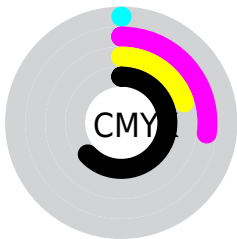
 Blue (29%)



 Red (37%)

 Yellow (27%)

 Blue (29%)

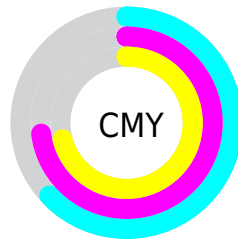


 Cyan (0%)

 Magenta (27%)

 Yellow (20%)

 Black (63%)



 Cyan (63%)

 Magenta (73%)

 Yellow (71%)

Brightness & Saturation Gradients

These gradients show how the YIQ color 77.1590, 12.9740, 7.1660 changes by changing the brightness by 10 percent. The first figure shows a shift by +10% for each color and the second figure -10%.

Similar to the brightness gradients but the following saturation gradients show a change of the YIQ color 77.1590, 12.9740, 7.1660 by changing the saturation by 10% instead.

■ 77.1590, 12.9740,
7.1660

■ 77.1590, 12.9740,
7.1660

255.0000, -0.0000,
-0.0000

■ 54.4470, 12.1030,
6.4310

■ 126.1700, 14.4410,
8.1130

■ 32.2620, 11.1860,
6.5300

■ 152.3550, 15.3580,
8.0140

■ 9.1700, 14.4410,
8.1130

■ 179.3550, 15.3580,
8.0140

■ 0.0000, 0.0000,
0.0000

■ 206.7680, 15.6330,
8.5370

■ 234.7680, 15.6330,
8.5370

253.8260, 0.5500,

1.0460

■ 77.1590, 12.9740,
7.1660

■ 77.1590, 12.9740,
7.1660

■ 71.0780, 17.6960,
9.6960

■ 83.2400, 8.2520,
4.6360

■ 64.4100, 22.6930,
12.7490

■ 89.9080, 3.2550,
1.5830

■ 58.3290, 27.4150,
15.2790

■ 95.9890, -1.4670,
-0.9470

■ 51.5470, 32.7330,
18.0210

■ 102.7710, -6.7850,
-3.6890

■ 45.4660, 37.4550,
20.5510

■ 108.8520,
-11.5070, -6.2190

■ 39.3850, 42.1770,
23.0810

■ 114.9330,
-16.2290, -8.7490

■ 32.7170, 47.1740,
26.1340

■ 121.6010,
-21.2260, -11.8020

■ 30.7280, 48.6410,
27.0810

■ 127.6820,
-25.9480, -14.3320

■ 134.3500,
-30.9450, -17.3850

Harmonies

Analogous

The Analogous color harmony consists of three colors that are next to each other on the color wheel.



76.9780, 6.2340, 8.1700



77.1590, 12.9740, 7.1660



76.7200, 15.5880, 3.8440

Triad

The Triadic color harmony groups three colors that are evenly spaced from another and form a triangle on the color wheel.



77.1590, 12.9740, 7.1660



74.1540, 2.2020, -6.8700



73.3060, -18.4770, -1.0450

Complementary

The Complementary color scheme is a pair of colors which are on the opposite of each other on the color wheel.



77.1590, 12.9740, 7.1660



85.8410, -12.9740, -7.1660

Split Complementary

Split-complementary colors differ from the complementary color scheme. The scheme consists of three colors, the original color and two neighbors of the complement color.



72.1870, -19.7600, -5.3280



77.1590, 12.9740, 7.1660



72.8370, -7.1510, -8.0710

Square

The Square scheme is like the rectangle color scheme, but the four colors are evenly spaced on the color wheel.



77.1590, 12.9740, 7.1660



75.0410, 9.9500, -4.1140



72.0580, -15.0830, -7.4910



75.0620, -11.7380, 3.4780

Rectangle

The Rectangle color scheme consists of four colors that form a rectangle on the color wheel.



77.1590, 12.9740, 7.1660



76.1390, 15.7260, 1.3420



72.0580, -15.0830, -7.4910



72.7680, -19.8980, -2.8260

Sweetspot

The Sweet Spot groups the original color and five complimentary colors.



77.1590, 12.9740, 7.1660



115.9190, 4.7220, 2.5300



77.5310, 3.2990, 11.8030



57.0220, 2.9340, 1.8940



189.0000, -0.0000, -0.0000



61.0000, 0.0000, -0.0000

Same Dimension

The Same Dimension uses a secret algorithm to generate beautiful new colors.



77.1590, 12.9740, 7.1660



95.8010, 20.0340, 11.3780



79.9970, 13.2500, 2.1620



42.6090, 2.6590, 1.3710



35.8540, 57.2140, 31.4060



77.3610, 122.9550, 67.9710

Inverse Universe

The Inverse Universe completely reimagines the original color for something new.



77.1590, 12.9740, 7.1660



95.8010, 20.0340, 11.3780



83.0030, -13.2500, -2.1620



42.6090, 2.6590, 1.3710



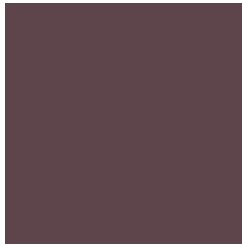
35.8540, 57.2140, 31.4060



77.3610, 122.9550, 67.9710

Previews

White Background



This preview shows how the YIQ color 77.1590, 12.9740, 7.1660 looks on a white background.

Color Contrast Check

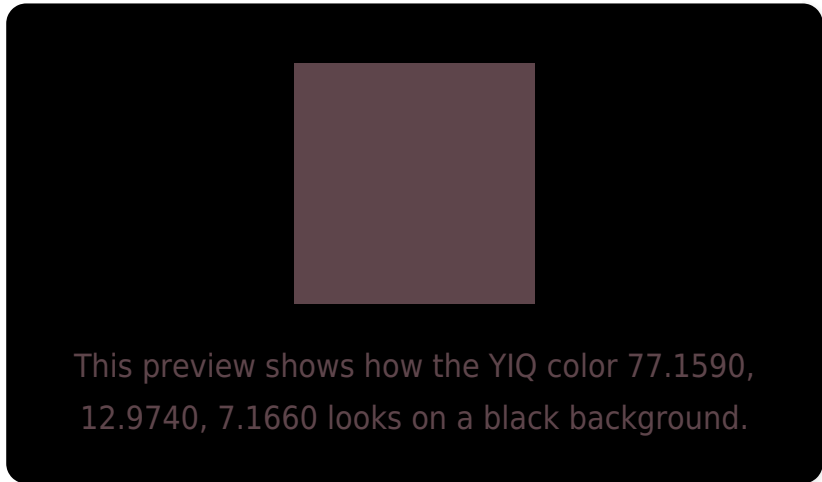
Large Text (above 18pt) WCAG AA ✓ Pass

Any Text WCAG AA ✓ Pass

Large Text (above 18pt) WCAG AAA ✓ Pass

Any Text WCAG AAA ✓ Pass

Black Background



Color Contrast Check

Large Text (above 18pt) WCAG AA × Fail

Any Text WCAG AA × Fail

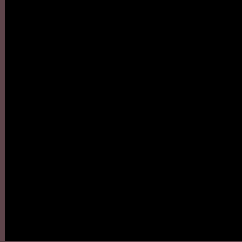
Large Text (above 18pt) WCAG AAA × Fail

Any Text WCAG AAA × Fail

If you want to check with other color combinations, try the [Color Contrast Checker](#).

YIQ 77.1590, 12.9740, 7.1660

Background



This preview shows how black text looks on a background with the YIQ color 77.1590, 12.9740, 7.1660.

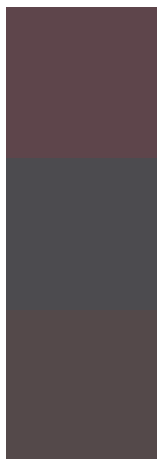


This preview shows how white text looks on a background with the YIQ color 77.1590, 12.9740,

Color Blindness Simulation

Color vision deficiency is a very complex topic, and I could not describe the different causes any better than Wikipedia does, so if you want to learn more, you should check out their [article about color blindness](#).

Dichromacy



Original Color

77.1590, 12.9740, 7.1660

Protanopia

75.7550, -0.6880, 1.4560

Deuteranopia

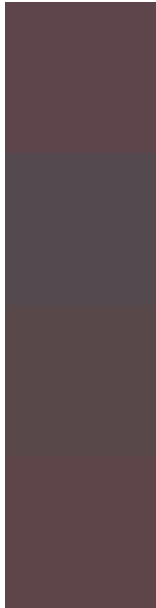
76.4030, 6.2350, 2.6430



Tritanopia

77.0450, 13.2950, 6.8550

Trichromacy



Original Color

77.1590, 12.9740, 7.1660

Protanomaly

76.5600, 4.3550, 3.6750

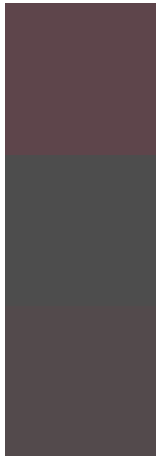
Deuteranomaly

77.0120, 8.8940, 4.0140

Tritanomaly

77.0450, 13.2950, 6.8550

Monochromacy



Original Color

77.1590, 12.9740, 7.1660

Achromatopsia

77.0000, -0.0000, -0.0000

Achromatomaly

76.9190, 4.7220, 2.5300

CSS Examples

Text

The CSS property to change the color of the text to YIQ 77.1590, 12.9740, 7.1660 is called "color". The color property can be set on classes, ids or directly on the HTML element.

This example shows how text in the color `rgb(94, 69, 75)` looks like.

```
.text, #text, p{  
    color:rgb(94, 69, 75)  
}
```

If you want to add a text shadow in that color use the text-shadow property, you can generate a text shadow directly with our [CSS Text Shadow Generator](#).

Here you see how black text with a 4 pixel rgb(94, 69, 75) colored shadow looks like.

```
.shadow{ text-shadow: 4px 4px 2px rgb(94, 69, 75) }
```

Border

The CSS property to change the border of an element to YIQ 77.1590, 12.9740, 7.1660 is called "border". The border property can be set on classes, ids or directly on the HTML element.

This example shows the color as border, it can be applied via the CSS property "border" or "border-color".

```
.border, #border, table{ border:4px solid rgb(94, 69, 75) }
```


If only the border color should be changed use the property border-color.

```
.border{ border-color:rgb(94, 69, 75) }
```

If you want to add a box shadow in that color use:

Here you see how a box with a 4 pixel rgb(94, 69, 75) colored shadow looks like.

```
.boxshadow{ -moz-box-shadow:4px 4px 4px  
4px rgb(94, 69, 75); -webkit-box-  
shadow:4px 4px 4px 4px rgb(94, 69, 75);  
box-shadow:4px 4px 4px 4px rgb(94, 69, 75)  
}
```

Background

The CSS property to change the background color of an element to YIQ 77.1590, 12.9740, 7.1660 is called "background". The background property can be set on classes, ids or directly on the HTML element.

```
.background, #background, body{  
background: rgb(94, 69, 75) }
```

If only the background color should be changed can be used:

```
.background{ background-color: rgb(94, 69,  
75) }
```

This example shows the color as background, it is applied via the CSS property "background".

To optimize and compress your CSS code, you can use our [online CSS compressor and optimizer](#) based on csstidy. If you want to create a linear or radial gradient as background or border, check our [CSS Gradient Generator](#).

Hey! You found this booklet interesting? Support Converting Colors with the new Membership Option!

The pro membership hides all ads, plus gives you double the colors in the color bucket, and more awesome pro features!

[Learn more, Memberships starting at \\$2.50/m!](#)

**Follow me
on Twitter!**

@ConvertingColor