

Converting Colors

YIQ(78.2130, 12.8820, 8.8340)

Have a look what the booklet for
YIQ(78.2130, 12.8820, 8.8340)
contains.

YIQ(78.2130, 12.8820, 8.8340)	3
<i>Conversions</i>	4
<i>Details</i>	6
<i>Harmonies</i>	12
<i>Previews</i>	24
<i>Color Blindness Simulation</i>	28
<i>CSS Examples</i>	31

Color

**YIQ(78.2130, 12.8820,
8.8340)**

Conversions

Conversions Part 1

Format	Color
Hex	60454F
RGB	96, 69, 79
RGB Percent	38%, 27%, 31%
CMY	0.6235, 0.7294, 0.6902
CMYK	0.00, 0.28, 0.18, 0.62
HSL	338°, 16%, 32%
HSV	338°, 28%, 38%
XYZ	8.3649, 7.3073, 8.3688
YIQ	78.2130, 12.8820, 8.8340

Conversions

Conversions Part 2

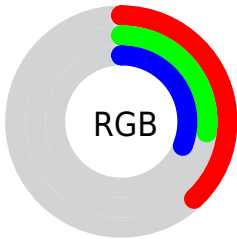
Format	Color
R_{YB}	96, 69, 79
Decimal	6309199
CIE Lab	32.50, 13.37, -1.42
CIE LCh	32, 13.443, 353.935
Yxy	7.3073, 0.3479, 0.3040
Android (android.graphics.Color)	4284499279 (0xFF60454F)
YUV	78.2130, 0.3880, 15.5992
Hunter-Lab	27.0320, 7.9296, 0.5669

Details

The YIQ color **78.2130, 12.8820, 8.8340** is a dark color, and the websafe version is hex **663333**. A complement of this color would be **86.7870, -12.8820, -8.8340**, and the grayscale version is **78.0000, -0.0000, -0.0000**.

A 20% lighter version of the original color is **127.2240, 14.3490, 9.7810**, and **33.3160, 11.0940, 8.1980** is the 20% darker color. If you saturate the color by 10%, you get **71.6590, 17.5580, 12.1980**, and if you desaturate by 10%, it is **84.7670, 8.2060, 5.4700**.

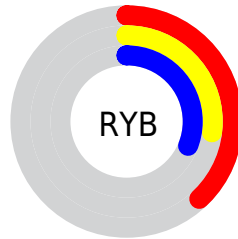
Distribution



 Red (38%)

 Green (27%)

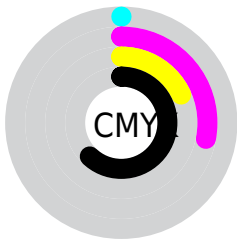
 Blue (31%)




 Red (38%)

 Yellow (27%)

 Blue (31%)

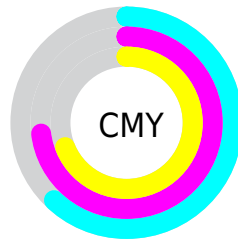


 Cyan (0%)

 Magenta (28%)

 Yellow (18%)

 Black (62%)



 Cyan (62%)

 Magenta (73%)

 Yellow (69%)

Brightness & Saturation Gradients

These gradients show how the YIQ color 78.2130, 12.8820, 8.8340 changes by changing the brightness by 10 percent. The first figure shows a shift by +10% for each color and the second figure -10%.

Similar to the brightness gradients but the following saturation gradients show a change of the YIQ color 78.2130, 12.8820, 8.8340 by changing the saturation by 10% instead.

■ 78.2130, 12.8820,
8.8340

■ 78.2130, 12.8820,
8.8340

255.0000, -0.0000,
-0.0000

■ 54.9140, 12.2860,
8.6220

■ 127.2240, 14.3490,
9.7810

■ 33.3160, 11.0940,
8.1980

■ 153.5230, 14.9450,
9.9930

■ 10.4520, 13.7070,
10.4030

■ 180.5230, 14.9450,
9.9930

■ 0.0000, 0.0000,
0.0000

■ 208.1210, 16.1370,
10.4170

■ 235.3380, 14.0280,
10.0920

254.4130, 0.2750,

0.5230

■ 78.2130, 12.8820,
8.8340

■ 78.2130, 12.8820,
8.8340

■ 71.6590, 17.5580,
12.1980

■ 84.7670, 8.2060,
5.4700

■ 65.6920, 21.9590,
15.0390

■ 90.7340, 3.8050,
2.6290

■ 59.1380, 26.6350,
18.4030

■ 97.2880, -0.8710,
-0.7350

■ 53.1710, 31.0360,
21.2440

■ 103.2550, -5.2720,
-3.5760

■ 46.6170, 35.7120,
24.6080

■ 109.8090, -9.9480,
-6.9400

■ 40.0630, 40.3880,
27.9720

■ 116.3630,
-14.6240, -10.3040

■ 34.0960, 44.7890,
30.8130

■ 122.3300,
-19.0250, -13.1450

■ 32.8080, 45.6600,
31.5480

■ 128.8840,
-23.7010, -16.5090

■ 134.8510,
-28.1020, -19.3500

Harmonies

Analogous

The Analogous color harmony consists of three colors that are next to each other on the color wheel.



78.1350, 4.3540, 9.2020



78.2130, 12.8820, 8.8340



77.5570, 17.6050, 5.8370

Triad

The Triadic color harmony groups three colors that are evenly spaced from another and form a triangle on the color wheel.



78.2130, 12.8820, 8.8340



74.7090, 4.9530, -7.1670



72.8000, -22.9240, -3.0520

Complementary

The Complementary color scheme is a pair of colors which are on the opposite of each other on the color wheel.



78.2130, 12.8820, 8.8340



86.7870, -12.8820, -8.8340

Split Complementary

Split-complementary colors differ from the complementary color scheme. The scheme consists of three colors, the original color and two neighbors of the complement color.



71.5780, -22.4190, -6.6990



78.2130, 12.8820, 8.8340



73.6800, -5.2710, -9.1030

Square

The Square scheme is like the rectangle color scheme, but the four colors are evenly spaced on the color wheel.



78.2130, 12.8820, 8.8340



76.1230, 12.6550, -3.5770



72.1180, -15.3120, -8.8480



75.0830, -16.2310, 2.3050

Rectangle

The Rectangle color scheme consists of four colors that form a rectangle on the color wheel.



78.2130, 12.8820, 8.8340



77.4490, 17.7890, 2.5010



72.1180, -15.3120, -8.8480



71.9740, -23.4740, -4.0980

Sweetspot

The Sweet Spot groups the original color and five complimentary colors.



78.2130, 12.8820, 8.8340



118.4460, 4.6760, 3.3640



77.1610, 1.4650, 12.0010



59.4350, 3.2090, 2.4170



191.0000, -0.0000, -0.0000



64.0000, -0.0000, -0.0000

Same Dimension

The Same Dimension uses a secret algorithm to generate beautiful new colors.



78.2130, 12.8820, 8.8340



96.6810, 20.4920, 14.0920



78.8340, 15.2670, 4.1550



45.3100, 2.0630, 1.1590



38.2760, 53.2700, 36.8060



81.9060, 114.4710, 78.5590

Inverse Universe

The Inverse Universe completely reimagines the original color for something new.



78.2130, 12.8820, 8.8340



96.6810, 20.4920, 14.0920



86.1660, -15.2670, -4.1550



45.3100, 2.0630, 1.1590



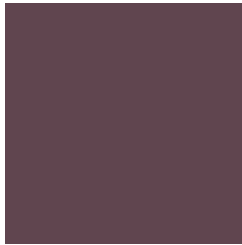
38.2760, 53.2700, 36.8060



81.9060, 114.4710, 78.5590

Previews

White Background



This preview shows how the YIQ color 78.2130, 12.8820, 8.8340 looks on a white background.

Color Contrast Check

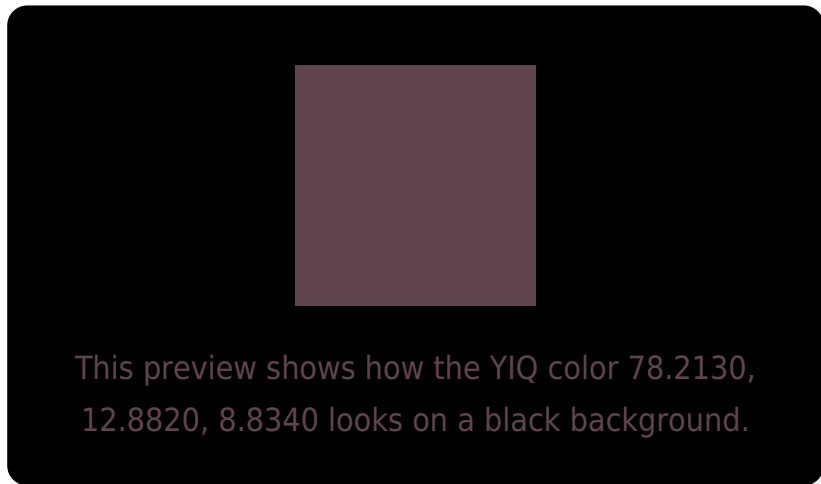
Large Text (above 18pt) WCAG AA ✓ Pass

Any Text WCAG AA ✓ Pass

Large Text (above 18pt) WCAG AAA ✓ Pass

Any Text WCAG AAA ✓ Pass

Black Background



Color Contrast Check

Large Text (above 18pt) WCAG AA × Fail

Any Text WCAG AA × Fail

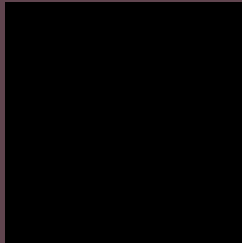
Large Text (above 18pt) WCAG AAA × Fail

Any Text WCAG AAA × Fail

If you want to check with other color combinations, try the [Color Contrast Checker](#).

YIQ 78.2130, 12.8820, 8.8340

Background



This preview shows how black text looks on a background with the YIQ color 78.2130, 12.8820, 8.8340.



This preview shows how white text looks on a background with the YIQ color 78.2130, 12.8820,

Color Blindness Simulation

Color vision deficiency is a very complex topic, and I could not describe the different causes any better than Wikipedia does, so if you want to learn more, you should check out their [article about color blindness](#).

Dichromacy



Original Color

78.2130, 12.8820, 8.8340

Protanopia

76.7980, -2.2470, 2.1770

Deuteranopia

77.1470, 4.0800, 3.1520



Tritanopia

78.3440, 13.8910, 7.0670

Trichromacy



Original Color

78.2130, 12.8820, 8.8340

Protanomaly

77.0160, 3.0710, 4.9190

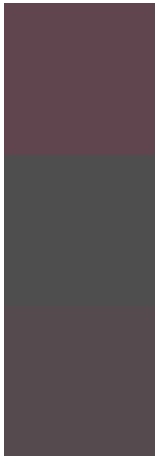
Deuteranomaly

77.4680, 7.6100, 5.2580

Tritanomaly

78.4580, 13.5700, 7.3780

Monochromacy



Original Color

78.2130, 12.8820, 8.8340

Achromatopsia

78.0000, -0.0000, -0.0000

Achromatomaly

78.3320, 4.9970, 3.0530

CSS Examples

Text

The CSS property to change the color of the text to YIQ 78.2130, 12.8820, 8.8340 is called "color". The color property can be set on classes, ids or directly on the HTML element.

This example shows how text in the color `rgb(96, 69, 79)` looks like.

```
.text, #text, p{  
    color:rgb(96, 69, 79)  
}
```

If you want to add a text shadow in that color use the text-shadow property, you can generate a text shadow directly with our [CSS Text Shadow Generator](#).

Here you see how black text with a 4 pixel rgb(96, 69, 79) colored shadow looks like.

```
.shadow{ text-shadow: 4px 4px 2px rgb(96, 69, 79) }
```

Border

The CSS property to change the border of an element to YIQ 78.2130, 12.8820, 8.8340 is called "border". The border property can be set on classes, ids or directly on the HTML element.

This example shows the color as border, it can be applied via the CSS property "border" or "border-color".

```
.border, #border, table{ border:4px solid rgb(96, 69, 79) }
```


If only the border color should be changed use the property `border-color`.

```
.border{ border-color:rgb(96, 69, 79) }
```

If you want to add a box shadow in that color use:

Here you see how a box with a 4 pixel `rgb(96, 69, 79)` colored shadow looks like.

```
.boxshadow{ -moz-box-shadow:4px 4px 4px  
4px rgb(96, 69, 79); -webkit-box-  
shadow:4px 4px 4px 4px rgb(96, 69, 79);  
box-shadow:4px 4px 4px 4px rgb(96, 69, 79)  
}
```

Background

The CSS property to change the background color of an element to YIQ 78.2130, 12.8820, 8.8340 is called "background". The background property can be set on classes, ids or directly on the HTML element.

```
.background, #background, body{  
background: rgb(96, 69, 79) }
```

If only the background color should be changed can be used:

```
.background{ background-color: rgb(96, 69,  
79) }
```

This example shows the color as background, it is applied via the CSS property "background".

To optimize and compress your CSS code, you can use our [online CSS compressor and optimizer](#) based on csstidy. If you want to create a linear or radial gradient as background or border, check our [CSS Gradient Generator](#).

Hey! You found this booklet interesting? Support Converting Colors with the new Membership Option!

The pro membership hides all ads, plus gives you double the colors in the color bucket, and more awesome pro features!

[Learn more, Memberships starting at \\$2.50/m!](#)

**Follow me
on Twitter!**

@ConvertingColor