

Converting Colors

YIQ(78.4040, 13.6620, 5.7100)

Have a look what the booklet for
YIQ(78.4040, 13.6620, 5.7100)
contains.

YIQ(78.4040, 13.6620, 5.7100)	3
<i>Conversions</i>	4
<i>Details</i>	6
<i>Harmonies</i>	12
<i>Previews</i>	24
<i>Color Blindness Simulation</i>	28
<i>CSS Examples</i>	31

Color

**YIQ(78.4040, 13.6620,
5.7100)**

Conversions

Conversions Part 1

Format	Color
Hex	5F4749
RGB	95, 71, 73
RGB Percent	37%, 28%, 29%
CMY	0.6274, 0.7216, 0.7137
CMYK	0.00, 0.25, 0.23, 0.63
HSL	355°, 14%, 33%
HSV	355°, 25%, 37%
XYZ	8.1765, 7.4201, 7.3069
YIQ	78.4040, 13.6620, 5.7100

Conversions

Conversions Part 2

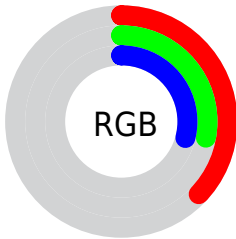
Format	Color
RYB	95, 71, 73
Decimal	6244169
CIELab	32.74, 10.62, 2.77
CIElCh	33, 10.971, 14.615
Yxy	7.4201, 0.3570, 0.3240
Android (android.graphics.Color)	4284434249 (0xFF5F4749)
YUV	78.4040, -2.6642, 14.5547
Hunter-Lab	27.2399, 5.9100, 3.1637

Details

The YIQ color **78.4040, 13.6620, 5.7100** is a dark color, and the websafe version is hex **666666**. A complement of this color would be **87.5960, -13.6620, -5.7100**, and the grayscale version is **78.0000, -0.0000, -0.0000**.

A 20% lighter version of the original color is **127.8880, 15.1750, 5.8230**, and **33.6210, 11.5530, 5.3850** is the 20% darker color. If you saturate the color by 10%, you get **71.5080, 19.3010, 8.1410**, and if you desaturate by 10%, it is **84.7130, 8.2980, 3.8020**.

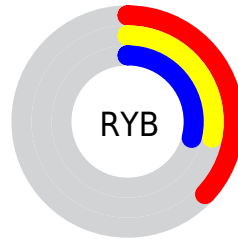
Distribution



 Red (37%)

 Green (28%)

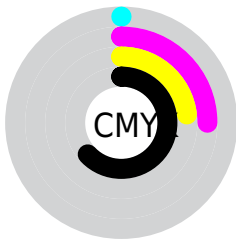
 Blue (29%)



 Red (37%)

 Yellow (28%)

 Blue (29%)

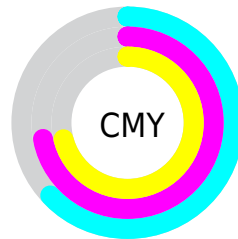


 Cyan (0%)

 Magenta (25%)

 Yellow (23%)

 Black (63%)



 Cyan (63%)

 Magenta (72%)

 Yellow (71%)

Brightness & Saturation Gradients

These gradients show how the YIQ color 78.4040, 13.6620, 5.7100 changes by changing the brightness by 10 percent. The first figure shows a shift by +10% for each color and the second figure -10%.

Similar to the brightness gradients but the following saturation gradients show a change of the YIQ color 78.4040, 13.6620, 5.7100 by changing the saturation by 10% instead.

■ 78.4040, 13.6620,
5.7100

■ 78.4040, 13.6620,
5.7100

■ 255.0000, -0.0000,
-0.0000

■ 55.2190, 12.7450,
5.8090

■ 128.0020, 14.8540,
6.1340

■ 33.6210, 11.5530,
5.3850

■ 153.6000, 16.0460,
6.5580

■ 9.7140, 15.7250,
6.8690

■ 180.6000, 16.0460,
6.5580

■ 0.0000, 0.0000,
0.0000

■ 207.8990, 16.6420,
6.7700

■ 235.6000, 16.0460,
6.5580

■ 78.4040, 13.6620,
5.7100

■ 78.4040, 13.6620,
5.7100

■ 71.5080, 19.3010,
8.1410

■ 84.7130, 8.2980,
3.8020

■ 65.3130, 24.3440,
10.3600

■ 91.4950, 2.9800,
1.0600

■ 58.4170, 29.9830,
12.7910

■ 97.8040, -2.3840,
-0.8480

■ 52.1080, 35.3470,
14.6990

■ 104.7000, -8.0230,
-3.2790

■ 45.3260, 40.6650,
17.4410

■ 111.5960,
-13.6620, -5.7100

■ 39.0170, 46.0290,
19.3490

■ 117.7910,
-18.7050, -7.9290

■ 32.1210, 51.6680,
21.7800

■ 124.6870,
-24.3440, -10.3600

■ 29.3170, 54.0520,

■ 130.9960,

22.6280

-29.7080, -12.2680

■ 137.7780,
-35.0260, -15.0100

Harmonies

Analogous

The Analogous color harmony consists of three colors that are next to each other on the color wheel.



78.5330, 8.9850, 7.8730



78.4040, 13.6620, 5.7100



77.7800, 15.3590, 2.4870

Triad

The Triadic color harmony groups three colors that are evenly spaced from another and form a triangle on the color wheel.



78.4040, 13.6620, 5.7100



75.0010, -1.7410, -6.9970



75.5130, -14.6260, 0.7500

Complementary

The Complementary color scheme is a pair of colors which are on the opposite of each other on the color wheel.



78.4040, 13.6620, 5.7100



87.5960, -13.6620, -5.7100

Split Complementary

Split-complementary colors differ from the complementary color scheme. The scheme consists of three colors, the original color and two neighbors of the complement color.



73.8390, -18.6600, -3.2360



78.4040, 13.6620, 5.7100



74.2820, -9.9020, -7.7740

Square

The Square scheme is like the rectangle color scheme, but the four colors are evenly spaced on the color wheel.



78.4040, 13.6620, 5.7100



76.2470, 6.3740, -5.3860



73.5140, -16.3670, -6.2470



77.1550, -7.5660, 4.9620

Rectangle

The Rectangle color scheme consists of four colors that form a rectangle on the color wheel.



78.4040, 13.6620, 5.7100



77.4160, 13.3880, -0.3400



73.5140, -16.3670, -6.2470



75.0890, -16.3680, -0.7200

Sweetspot

The Sweet Spot groups the original color and five complimentary colors.



78.4040, 13.6620, 5.7100



115.6910, 5.3640, 1.9080



80.3140, 5.4080, 12.1280



56.9080, 3.2550, 1.5830



189.0000, -0.0000, -0.0000



61.0000, 0.0000, -0.0000

Same Dimension

The Same Dimension uses a secret algorithm to generate beautiful new colors.



78.4040, 13.6620, 5.7100



97.1060, 20.4930, 8.5650



84.0460, 11.5540, -0.1420



45.1960, 2.3840, 0.8480



34.5140, 63.8630, 26.5430



74.0400, 136.6200, 57.1000

Inverse Universe

The Inverse Universe completely reimagines the original color for something new.



78.4040, 13.6620, 5.7100



97.1060, 20.4930, 8.5650



81.9540, -11.5540, 0.1420



45.1960, 2.3840, 0.8480



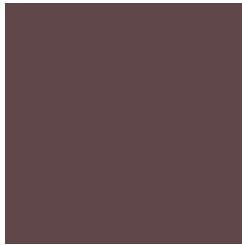
34.5140, 63.8630, 26.5430



74.0400, 136.6200, 57.1000

Previews

White Background



This preview shows how the YIQ color 78.4040, 13.6620, 5.7100 looks on a white background.

Color Contrast Check

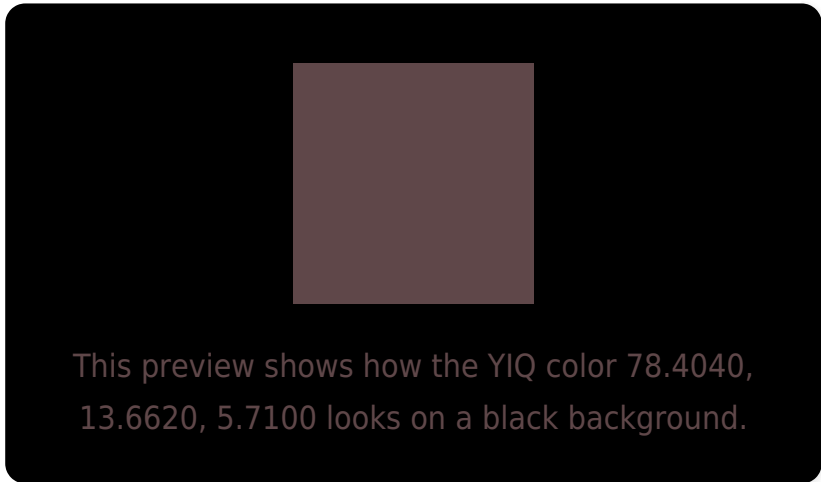
Large Text (above 18pt) WCAG AA ✓ Pass

Any Text WCAG AA ✓ Pass

Large Text (above 18pt) WCAG AAA ✓ Pass

Any Text WCAG AAA ✓ Pass

Black Background



Color Contrast Check

Large Text (above 18pt) WCAG AA × Fail

Any Text WCAG AA × Fail

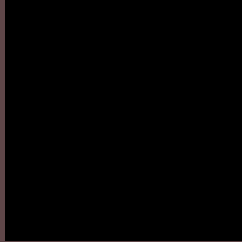
Large Text (above 18pt) WCAG AAA × Fail

Any Text WCAG AAA × Fail

If you want to check with other color combinations, try the [Color Contrast Checker](#).

YIQ 78.4040, 13.6620, 5.7100

Background



This preview shows how black text looks on a background with the YIQ color 78.4040, 13.6620, 5.7100.

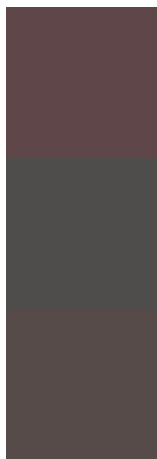


This preview shows how white text looks on a background with the YIQ color 78.4040, 13.6620,

Color Blindness Simulation

Color vision deficiency is a very complex topic, and I could not describe the different causes any better than Wikipedia does, so if you want to learn more, you should check out their [article about color blindness](#).

Dichromacy



Original Color

78.4040, 13.6620, 5.7100

Protanopia

77.4840, 1.5130, 0.1130

Deuteranopia

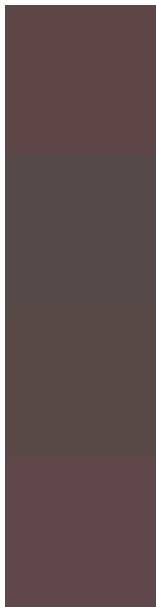
77.9470, 7.5190, 1.3990



Tritanopia

78.7460, 12.6990, 6.6430

Trichromacy



Original Color

78.4040, 13.6620, 5.7100

Protanomaly

77.9900, 5.9600, 2.1200

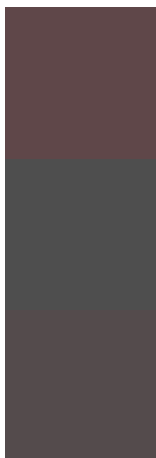
Deuteranomaly

78.2570, 9.5820, 2.5580

Tritanomaly

78.6320, 13.0200, 6.3320

Monochromacy



Original Color

78.4040, 13.6620, 5.7100

Achromatopsia

78.0000, -0.0000, -0.0000

Achromatomaly

77.8050, 5.0430, 2.2190

CSS Examples

Text

The CSS property to change the color of the text to YIQ 78.4040, 13.6620, 5.7100 is called "color". The color property can be set on classes, ids or directly on the HTML element.

This example shows how text in the color `rgb(95, 71, 73)` looks like.

```
.text, #text, p{  
    color:rgb(95, 71, 73)  
}
```

If you want to add a text shadow in that color use the text-shadow property, you can generate a text shadow directly with our [CSS Text Shadow Generator](#).

Here you see how black text with a 4 pixel rgb(95, 71, 73) colored shadow looks like.

```
.shadow{ text-shadow: 4px 4px 2px rgb(95, 71, 73) }
```

Border

The CSS property to change the border of an element to YIQ 78.4040, 13.6620, 5.7100 is called "border". The border property can be set on classes, ids or directly on the HTML element.

This example shows the color as border, it can be applied via the CSS property "border" or "border-color".

```
.border, #border, table{ border:4px solid rgb(95, 71, 73) }
```


If only the border color should be changed use the property border-color.

```
.border{ border-color:rgb(95, 71, 73) }
```

If you want to add a box shadow in that color use:

Here you see how a box with a 4 pixel rgb(95, 71, 73) colored shadow looks like.

```
.boxshadow{ -moz-box-shadow:4px 4px 4px  
4px rgb(95, 71, 73); -webkit-box-  
shadow:4px 4px 4px 4px rgb(95, 71, 73);  
box-shadow:4px 4px 4px 4px rgb(95, 71, 73)  
}
```

Background

The CSS property to change the background color of an element to YIQ 78.4040, 13.6620, 5.7100 is called "background". The background property can be set on classes, ids or directly on the HTML element.

```
.background, #background, body{  
background: rgb(95, 71, 73) }
```

If only the background color should be changed can be used:

```
.background{ background-color: rgb(95, 71,  
73) }
```

This example shows the color as background, it is applied via the CSS property "background".

To optimize and compress your CSS code, you can use our [online CSS compressor and optimizer](#) based on csstidy. If you want to create a linear or radial gradient as background or border, check our [CSS Gradient Generator](#).

Hey! You found this booklet interesting? Support Converting Colors with the new Membership Option!

The pro membership hides all ads, plus gives you double the colors in the color bucket, and more awesome pro features!

[Learn more, Memberships starting at \\$2.50/m!](#)

**Follow me
on Twitter!**

@ConvertingColor