

Converting Colors

YIQ(80.9250, 13.7530, 9.5690)

Have a look what the booklet for
YIQ(80.9250, 13.7530, 9.5690)
contains.

YIQ(80.9250, 13.7530, 9.5690)	3
<i>Conversions</i>	4
<i>Details</i>	6
<i>Harmonies</i>	12
<i>Previews</i>	24
<i>Color Blindness Simulation</i>	28
<i>CSS Examples</i>	31

Color

**YIQ(80.9250, 13.7530,
9.5690)**

Conversions

Conversions Part 1

Format	Color
Hex	644752
RGB	100, 71, 82
RGB Percent	39%, 28%, 32%
CMY	0.6078, 0.7216, 0.6784
CMYK	0.00, 0.29, 0.18, 0.61
HSL	337°, 17%, 34%
HSV	337°, 29%, 39%
XYZ	9.0336, 7.8247, 9.0192
YIQ	80.9250, 13.7530, 9.5690

Conversions

Conversions Part 2

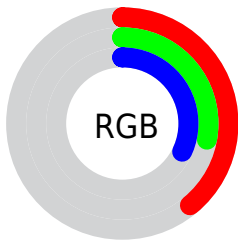
Format	Color
R_{YB}	100, 71, 82
Decimal	6571858
CIE _{Lab}	33.62, 14.32, -1.64
CIE _{LCh}	34, 14.415, 353.468
Yxy	7.8247, 0.3491, 0.3024
Android (android.graphics.Color)	4284761938 (0xFF644752)
YUV	80.9250, 0.5300, 16.7288
Hunter-Lab	27.9727, 8.6929, 0.4641

Details

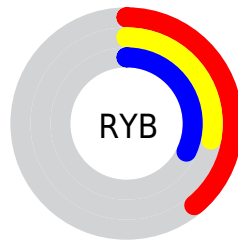
The YIQ color **80.9250, 13.7530, 9.5690** is a dark color, and the websafe version is hex **663333**. A complement of this color would be **90.0750, -13.7530, -9.5690**, and the grayscale version is **81.0000, -0.0000, 0.0000**.

A 20% lighter version of the original color is **130.5230, 14.9450, 9.9930**, and **35.9140, 12.2860, 8.6220** is the 20% darker color. If you saturate the color by 10%, you get **74.3710, 18.4290, 12.9330**, and if you desaturate by 10%, it is **87.4790, 9.0770, 6.2050**.

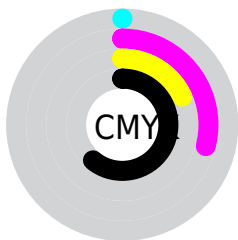
Distribution



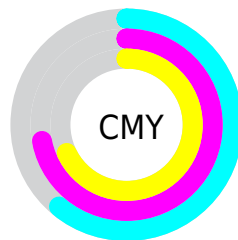
- Red (39%)
- Green (28%)
- Blue (32%)



- Red (39%)
- Yellow (28%)
- Blue (32%)



- Cyan (0%)
- Magenta (29%)
- Yellow (18%)
- Black (61%)



- Cyan (61%)
- Magenta (72%)
- Yellow (68%)

Brightness & Saturation Gradients

These gradients show how the YIQ color 80.9250, 13.7530, 9.5690 changes by changing the brightness by 10 percent. The first figure shows a shift by +10% for each color and the second figure -10%.

Similar to the brightness gradients but the following saturation gradients show a change of the YIQ color 80.9250, 13.7530, 9.5690 by changing the saturation by 10% instead.

80.9250, 13.7530,
9.5690

80.9250, 13.7530,
9.5690

255.0000, -0.0000,
-0.0000

57.6260, 13.1570,
9.3570

130.5230, 14.9450,
9.9930

35.9140, 12.2860,
8.6220

156.2350, 15.8160,
10.7280

12.6800, 13.0650,
11.0250

183.5340, 16.4120,
10.9400

0.0000, 0.0000,
0.0000

210.9470, 16.6870,
11.4630

237.4410, 12.2400,
9.4560

80.9250, 13.7530,
9.5690

80.9250, 13.7530,
9.5690

74.3710, 18.4290,
12.9330

87.4790, 9.0770,
6.2050

67.8170, 23.1050,
16.2970

94.0330, 4.4010,
2.8410

61.1490, 28.1020,
19.3500

100.7010, -0.5960,
-0.2120

54.5950, 32.7780,
22.7140

107.2550, -5.2720,
-3.5760

48.0410, 37.4540,
26.0780

113.8090, -9.9480,
-6.9400

41.4870, 42.1300,
29.4420

120.3630,
-14.6240, -10.3040

34.9330, 46.8060,
32.8060

126.9170,
-19.3000, -13.6680

34.2320, 47.4020,

133.5850,

33.0180

-24.2970, -16.7210

■ 140.1390,
-28.9730, -20.0850

Harmonies

Analogous

The Analogous color harmony consists of three colors that are next to each other on the color wheel.



80.6620, 4.3080, 10.0360



80.9250, 13.7530, 9.5690



80.1550, 18.7970, 6.2610

Triad

The Triadic color harmony groups three colors that are evenly spaced from another and form a triangle on the color wheel.



80.9250, 13.7530, 9.5690



77.4810, 5.5950, -7.7890



75.0170, -25.0330, -3.3770

Complementary

The Complementary color scheme is a pair of colors which are on the opposite of each other on the color wheel.



80.9250, 13.7530, 9.5690



90.0750, -13.7530, -9.5690

Split Complementary

Split-complementary colors differ from the complementary color scheme. The scheme consists of three colors, the original color and two neighbors of the complement color.



73.6810, -24.2070, -7.3350



80.9250, 13.7530, 9.5690



76.1530, -5.2250, -9.9370

Square

The Square scheme is like the rectangle color scheme, but the four colors are evenly spaced on the color wheel.



80.9250, 13.7530, 9.5690



78.6070, 14.1680, -3.4640



74.4060, -16.1830, -9.5830



77.5990, -17.7440, 2.1920

Rectangle

The Rectangle color scheme consists of four colors that form a rectangle on the color wheel.



80.9250, 13.7530, 9.5690



80.0470, 18.9810, 2.9250



74.4060, -16.1830, -9.5830



74.0770, -25.2620, -4.7340

Sweetspot

The Sweet Spot groups the original color and five complimentary colors.



80.9250, 13.7530, 9.5690



122.1580, 5.5470, 4.0990



79.6880, 1.4190, 12.8350



61.4350, 3.2090, 2.4170



194.0000, -0.0000, 0.0000



66.0000, -0.0000, -0.0000

Same Dimension

The Same Dimension uses a secret algorithm to generate beautiful new colors.



80.9250, 13.7530, 9.5690



100.3930, 21.3630, 14.8270



81.4320, 16.4590, 4.5790



47.7230, 2.3380, 1.6820



39.4010, 54.4160, 38.0640



82.8460, 114.7000, 79.9160

Inverse Universe

The Inverse Universe completely reimagines the original color for something new.



80.9250, 13.7530, 9.5690



100.3930, 21.3630, 14.8270



89.5680, -16.4590, -4.5790



47.7230, 2.3380, 1.6820



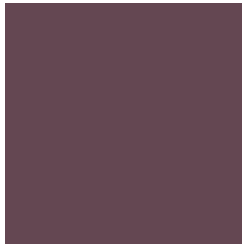
39.4010, 54.4160, 38.0640



82.8460, 114.7000, 79.9160

Previews

White Background



This preview shows how the YIQ color 80.9250, 13.7530, 9.5690 looks on a white background.

Color Contrast Check

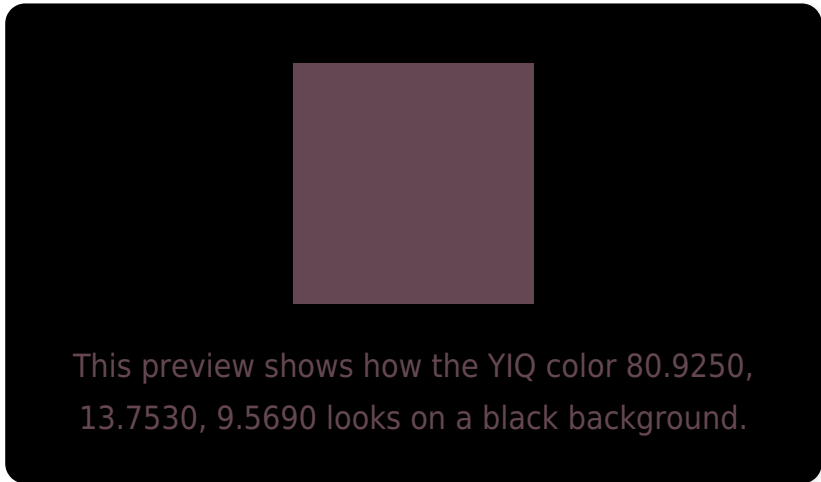
Large Text (above 18pt) WCAG AA ✓ Pass

Any Text WCAG AA ✓ Pass

Large Text (above 18pt) WCAG AAA ✓ Pass

Any Text WCAG AAA ✓ Pass

Black Background



Color Contrast Check

Large Text (above 18pt) WCAG AA × Fail

Any Text WCAG AA × Fail

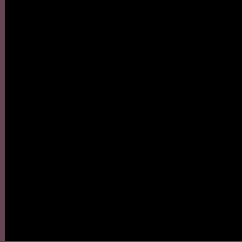
Large Text (above 18pt) WCAG AAA × Fail

Any Text WCAG AAA × Fail

If you want to check with other color combinations, try the [Color Contrast Checker](#).

YIQ 80.9250, 13.7530, 9.5690

Background



This preview shows how black text looks on a background with the YIQ color 80.9250, 13.7530, 9.5690.



This preview shows how white text looks on a background with the YIQ color 80.9250, 13.7530,

Color Blindness Simulation

Color vision deficiency is a very complex topic, and I could not describe the different causes any better than Wikipedia does, so if you want to learn more, you should check out their [article about color blindness](#).

Dichromacy



Original Color

80.9250, 13.7530, 9.5690

Protanopia

79.9120, -2.5680, 2.4880

Deuteranopia

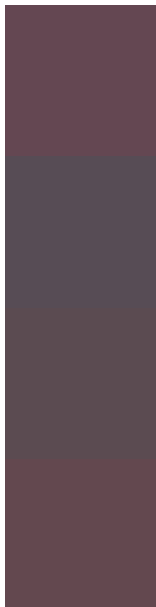
80.1470, 4.0800, 3.1520



Tritanopia

80.6430, 14.4870, 7.2790

Trichromacy



Original Color

80.9250, 13.7530, 9.5690

Protanomaly

80.3150, 3.6670, 5.1310

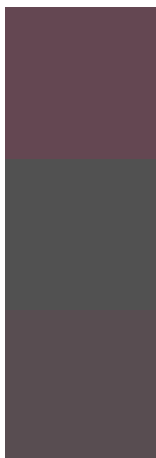
Deuteranomaly

80.4680, 7.6100, 5.2580

Tritanomaly

80.8710, 13.8450, 7.9010

Monochromacy



Original Color

80.9250, 13.7530, 9.5690

Achromatopsia

81.0000, -0.0000, 0.0000

Achromatomaly

80.7450, 5.2720, 3.5760

CSS Examples

Text

The CSS property to change the color of the text to YIQ 80.9250, 13.7530, 9.5690 is called "color". The color property can be set on classes, ids or directly on the HTML element.

This example shows how text in the color `rgb(100, 71, 82)` looks like.

```
.text, #text, p{  
    color:rgb(100, 71, 82)  
}
```

If you want to add a text shadow in that color use the text-shadow property, you can generate a text shadow directly with our [CSS Text Shadow Generator](#).

Here you see how black text with a 4 pixel rgb(100, 71, 82) colored shadow looks like.

```
.shadow{ text-shadow: 4px 4px 2px rgb(100, 71, 82) }
```

Border

The CSS property to change the border of an element to YIQ 80.9250, 13.7530, 9.5690 is called "border". The border property can be set on classes, ids or directly on the HTML element.

This example shows the color as border, it can be applied via the CSS property "border" or "border-color".

```
.border, #border, table{ border:4px solid rgb(100, 71, 82) }
```


If only the border color should be changed use the property `border-color`.

```
.border{ border-color:rgb(100, 71, 82) }
```

If you want to add a box shadow in that color use:

Here you see how a box with a 4 pixel `rgb(100, 71, 82)` colored shadow looks like.

```
.boxshadow{ -moz-box-shadow:4px 4px 4px  
4px rgb(100, 71, 82); -webkit-box-  
shadow:4px 4px 4px 4px rgb(100, 71, 82);  
box-shadow:4px 4px 4px 4px rgb(100, 71,  
82) }
```

Background

The CSS property to change the background color of an element to YIQ 80.9250, 13.7530, 9.5690 is called "background". The background property can be set on classes, ids or directly on the HTML element.

```
.background, #background, body{  
background: rgb(100, 71, 82) }
```

If only the background color should be changed can be used:

```
.background{ background-color: rgb(100, 71,  
82) }
```

This example shows the color as background, it is applied via the CSS property "background".

To optimize and compress your CSS code, you can use our [online CSS compressor and optimizer](#) based on csstidy. If you want to create a linear or radial gradient as background or border, check our [CSS Gradient Generator](#).

Hey! You found this booklet interesting? Support Converting Colors with the new Membership Option!

The pro membership hides all ads, plus gives you double the colors in the color bucket, and more awesome pro features!

[Learn more, Memberships starting at \\$2.50/m!](#)

**Follow me
on Twitter!**

@ConvertingColor