

Converting Colors

YIQ(81.1480, 11.5070, 6.2190)

Have a look what the booklet for
YIQ(81.1480, 11.5070, 6.2190)
contains.

YIQ(81.1480, 11.5070, 6.2190)	3
<i>Conversions</i>	4
<i>Details</i>	6
<i>Harmonies</i>	12
<i>Previews</i>	24
<i>Color Blindness Simulation</i>	28
<i>CSS Examples</i>	31

Color

**YIQ(81.1480, 11.5070,
6.2190)**

Conversions

Conversions Part 1

Format	Color
Hex	604A4F
RGB	96, 74, 79
RGB Percent	38%, 29%, 31%
CMY	0.6235, 0.7098, 0.6902
CMYK	0.00, 0.23, 0.18, 0.62
HSL	346°, 13%, 33%
HSV	346°, 23%, 38%
XYZ	8.6852, 7.9486, 8.4756
YIQ	81.1480, 11.5070, 6.2190

Conversions

Conversions Part 2

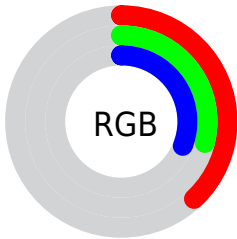
Format	Color
RYB	96, 74, 79
Decimal	6310479
CIELab	33.88, 10.23, 0.60
CIElCh	34, 10.245, 3.341
Yxy	7.9486, 0.3459, 0.3166
Android (android.graphics.Color)	4284500559 (0xFF604A4F)
YUV	81.1480, -1.0590, 13.0252
Hunter-Lab	28.1932, 5.6506, 1.9111

Details

The YIQ color **81.1480, 11.5070, 6.2190** is a dark color, and the websafe version is hex **666666**. A complement of this color would be **88.8520, -11.5070, -6.2190**, and the grayscale version is **81.0000, -0.0000, 0.0000**.

A 20% lighter version of the original color is **130.7460, 12.6990, 6.6430**, and **36.2510, 9.7190, 5.5830** is the 20% darker color. If you saturate the color by 10%, you get **74.4800, 16.5040, 9.2720**, and if you desaturate by 10%, it is **87.8160, 6.5100, 3.1660**.

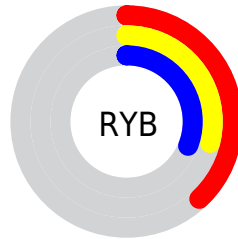
Distribution



Red (38%)

Green (29%)

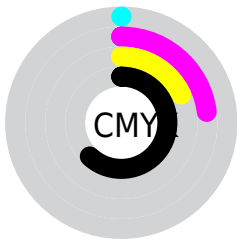
Blue (31%)



Red (38%)

Yellow (29%)

Blue (31%)

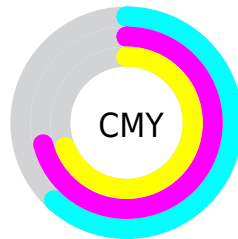


Cyan (0%)

Magenta (23%)

Yellow (18%)

Black (62%)



Cyan (62%)

Magenta (71%)

Yellow (69%)

Brightness & Saturation Gradients

These gradients show how the YIQ color 81.1480, 11.5070, 6.2190 changes by changing the brightness by 10 percent. The first figure shows a shift by +10% for each color and the second figure -10%.

Similar to the brightness gradients but the following saturation gradients show a change of the YIQ color 81.1480, 11.5070, 6.2190 by changing the saturation by 10% instead.

■ 81.1480, 11.5070,
6.2190

■ 81.1480, 11.5070,
6.2190

■ 255.0000, -0.0000,
-0.0000

■ 57.8490, 10.9110,
6.0070

■ 130.7460, 12.6990,
6.6430

■ 36.2510, 9.7190,
5.5830

■ 157.0450, 13.2950,
6.8550

■ 13.6750, 11.4610,
7.0530

■ 183.4580, 13.5700,
7.3780

■ 0.0000, 0.0000,
0.0000

■ 211.3440, 13.8910,
7.0670

■ 238.8600, 12.3780,
6.9540

81.1480, 11.5070,
6.2190

81.1480, 11.5070,
6.2190

74.4800, 16.5040,
9.2720

87.8160, 6.5100,
3.1660

68.2850, 21.5470,
11.4910

94.0110, 1.4670,
0.9470

61.6170, 26.5440,
14.5440

100.6790, -3.5300,
-2.1060

55.4220, 31.5870,
16.7630

106.8740, -8.5730,
-4.3250

48.7540, 36.5840,
19.8160

113.5420,
-13.5700, -7.3780

42.0860, 41.5810,
22.8690

120.2100,
-18.5670, -10.4310

35.8910, 46.6240,
25.0880

126.4050,
-23.6100, -12.6500

31.2120, 50.1540,

133.0730,

27.1940

-28.6070, -15.7030

■ 139.2680,
-33.6500, -17.9220

Harmonies

Analogous

The Analogous color harmony consists of three colors that are next to each other on the color wheel.



81.1520, 5.6840, 7.1240



81.1480, 11.5070, 6.2190



80.8230, 13.8000, 3.2080

Triad

The Triadic color harmony groups three colors that are evenly spaced from another and form a triangle on the color wheel.



81.1480, 11.5070, 6.2190



78.3820, 1.5600, -6.2480



77.3880, -15.7720, -0.5080

Complementary

The Complementary color scheme is a pair of colors which are on the opposite of each other on the color wheel.



81.1480, 11.5070, 6.2190



88.8520, -11.5070, -6.2190

Split Complementary

Split-complementary colors differ from the complementary color scheme. The scheme consists of three colors, the original color and two neighbors of the complement color.



76.6820, -16.7800, -4.2680



81.1480, 11.5070, 6.2190



77.5490, -6.2800, -7.3360

Square

The Square scheme is like the rectangle color scheme, but the four colors are evenly spaced on the color wheel.



81.1480, 11.5070, 6.2190



79.0840, 8.3910, -3.3930



76.3680, -13.0200, -6.3320



79.4320, -9.9040, 3.2800

Rectangle

The Rectangle color scheme consists of four colors that form a rectangle on the color wheel.



81.1480, 11.5070, 6.2190



80.3560, 13.6170, 1.0170



76.3680, -13.0200, -6.3320



77.1490, -16.5970, -2.0770

Sweetspot

The Sweet Spot groups the original color and five complimentary colors.



81.1480, 11.5070, 6.2190



118.9190, 4.7220, 2.5300



81.5910, 3.0700, 10.4460



60.6090, 2.6590, 1.3710



191.0000, -0.0000, -0.0000



64.0000, -0.0000, -0.0000

Same Dimension

The Same Dimension uses a secret algorithm to generate beautiful new colors.



81.1480, 11.5070, 6.2190



101.3770, 18.2920, 9.9080



84.1000, 11.4620, 1.5260



45.3100, 2.0630, 1.1590



36.4520, 58.4060, 31.8300



78.0300, 125.3850, 67.9850

Inverse Universe

The Inverse Universe completely reimagines the original color for something new.



81.1480, 11.5070, 6.2190



101.3770, 18.2920, 9.9080



85.9000, -11.4620, -1.5260



45.3100, 2.0630, 1.1590



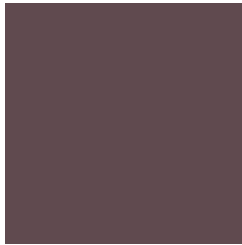
36.4520, 58.4060, 31.8300



78.0300, 125.3850, 67.9850

Previews

White Background



This preview shows how the YIQ color 81.1480, 11.5070, 6.2190 looks on a white background.

Color Contrast Check

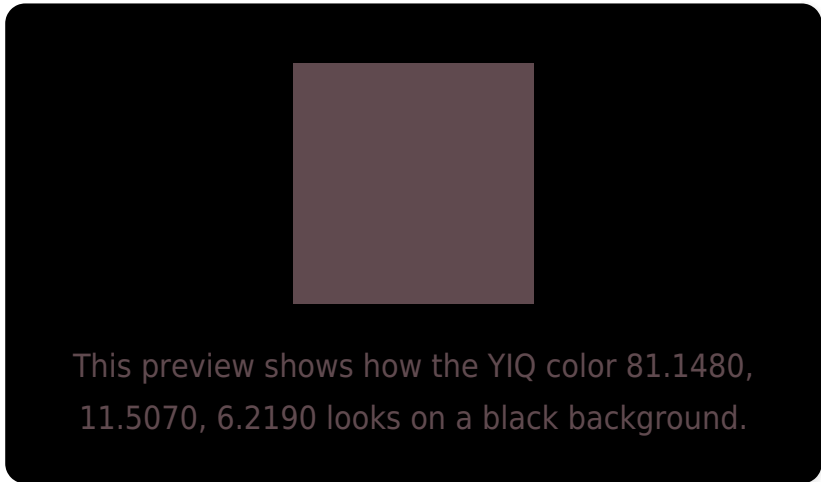
Large Text (above 18pt) WCAG AA ✓ Pass

Any Text WCAG AA ✓ Pass

Large Text (above 18pt) WCAG AAA ✓ Pass

Any Text WCAG AAA ✓ Pass

Black Background



Color Contrast Check

Large Text (above 18pt) WCAG AA × Fail

Any Text WCAG AA × Fail

Large Text (above 18pt) WCAG AAA × Fail

Any Text WCAG AAA × Fail

If you want to check with other color combinations, try the [Color Contrast Checker](#).

YIQ 81.1480, 11.5070, 6.2190

Background



This preview shows how black text looks on a background with the YIQ color 81.1480, 11.5070, 6.2190.

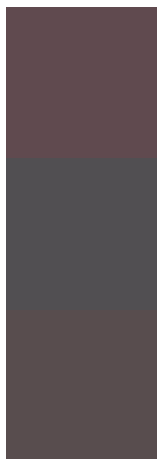


This preview shows how white text looks on a background with the YIQ color 81.1480, 11.5070,

Color Blindness Simulation

Color vision deficiency is a very complex topic, and I could not describe the different causes any better than Wikipedia does, so if you want to learn more, you should check out their [article about color blindness](#).

Dichromacy



Original Color

81.1480, 11.5070, 6.2190

Protanopia

79.9400, 0.2290, 1.3570

Deuteranopia

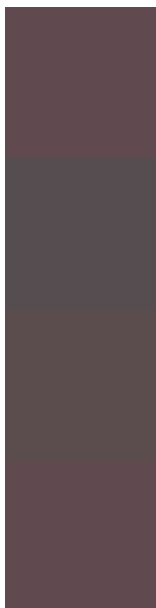
80.4030, 6.2350, 2.6430



Tritanopia

81.2620, 11.1860, 6.5300

Trichromacy



Original Color

81.1480, 11.5070, 6.2190

Protanomaly

80.1470, 4.0800, 3.1520

Deuteranomaly

80.7130, 8.2980, 3.8020

Tritanomaly

81.2620, 11.1860, 6.5300

Monochromacy



Original Color

81.1480, 11.5070, 6.2190

Achromatopsia

81.0000, -0.0000, 0.0000

Achromatomaly

80.6200, 4.1260, 2.3180

CSS Examples

Text

The CSS property to change the color of the text to YIQ 81.1480, 11.5070, 6.2190 is called "color". The color property can be set on classes, ids or directly on the HTML element.

This example shows how text in the color `rgb(96, 74, 79)` looks like.

```
.text, #text, p{  
    color:rgb(96, 74, 79)  
}
```

If you want to add a text shadow in that color use the text-shadow property, you can generate a text shadow directly with our [CSS Text Shadow Generator](#).

Here you see how black text with a 4 pixel rgb(96, 74, 79) colored shadow looks like.

```
.shadow{ text-shadow: 4px 4px 2px rgb(96, 74, 79) }
```

Border

The CSS property to change the border of an element to YIQ 81.1480, 11.5070, 6.2190 is called "border". The border property can be set on classes, ids or directly on the HTML element.

This example shows the color as border, it can be applied via the CSS property "border" or "border-color".

```
.border, #border, table{ border:4px solid rgb(96, 74, 79) }
```


If only the border color should be changed use the property `border-color`.

```
.border{ border-color:rgb(96, 74, 79) }
```

If you want to add a box shadow in that color use:

Here you see how a box with a 4 pixel `rgb(96, 74, 79)` colored shadow looks like.

```
.boxshadow{ -moz-box-shadow:4px 4px 4px  
4px rgb(96, 74, 79); -webkit-box-  
shadow:4px 4px 4px 4px rgb(96, 74, 79);  
box-shadow:4px 4px 4px 4px rgb(96, 74, 79)  
}
```

Background

The CSS property to change the background color of an element to YIQ 81.1480, 11.5070, 6.2190 is called "background". The background property can be set on classes, ids or directly on the HTML element.

```
.background, #background, body{  
background: rgb(96, 74, 79) }
```

If only the background color should be changed can be used:

```
.background{ background-color: rgb(96, 74,  
79) }
```

This example shows the color as background, it is applied via the CSS property "background".

To optimize and compress your CSS code, you can use our [online CSS compressor and optimizer](#) based on csstidy. If you want to create a linear or radial gradient as background or border, check our [CSS Gradient Generator](#).

Hey! You found this booklet interesting? Support Converting Colors with the new Membership Option!

The pro membership hides all ads, plus gives you double the colors in the color bucket, and more awesome pro features!

[Learn more, Memberships starting at \\$2.50/m!](#)

**Follow me
on Twitter!**

@ConvertingColor