

Converting Colors

YIQ(82.3020, 13.7090, -0.6510)

Have a look what the booklet for
YIQ(82.3020, 13.7090, -0.6510)
contains.

YIQ(82.3020, 13.7090, -0.6510)	3
<i>Conversions</i>	4
<i>Details</i>	6
<i>Harmonies</i>	12
<i>Previews</i>	24
<i>Color Blindness Simulation</i>	28
<i>CSS Examples</i>	31

Color

**YIQ(82.3020, 13.7090,
-0.6510)**

Conversions

Conversions Part 1

Format	Color
Hex	5F4F42
RGB	95, 79, 66
RGB Percent	37%, 31%, 26%
CMY	0.6274, 0.6902, 0.7411
CMYK	0.00, 0.17, 0.31, 0.63
HSL	27°, 18%, 32%
HSV	27°, 31%, 37%
XYZ	8.4995, 8.4178, 6.3336
YIQ	82.3020, 13.7090, -0.6510

Conversions

Conversions Part 2

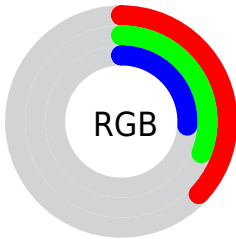
Format	Color
R_{YB}	95, 90, 66
Decimal	6246210
CIE Lab	34.84, 4.46, 10.16
CIE LCh	35, 11.096, 66.298
Yxy	8.4178, 0.3656, 0.3620
Android (android.graphics.Color)	4284436290 (0xFF5F4F42)
YUV	82.3020, -8.0369, 11.1361
Hunter-Lab	29.0135, 1.5176, 7.3665

Details

The YIQ color **82.3020, 13.7090, -0.6510** is a dark color, and the websafe version is hex **666666**. A complement of this color would be **78.6980, -13.7090, 0.6510**, and the grayscale version is **82.0000, 0.0000, -0.0000**.

A 20% lighter version of the original color is **131.7860, 15.2220, -0.5380**, and **37.5190, 11.6000, -0.9760** is the 20% darker color. If you saturate the color by 10%, you get **78.3410, 17.9730, -0.8350**, and if you desaturate by 10%, it is **86.3770, 9.1240, -0.1560**.

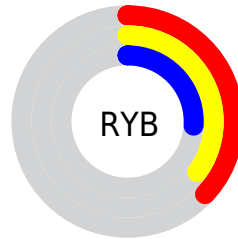
Distribution



 Red (37%)

 Green (31%)

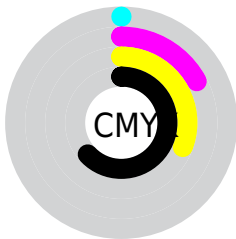
 Blue (26%)



 Red (37%)

 Yellow (35%)

 Blue (26%)

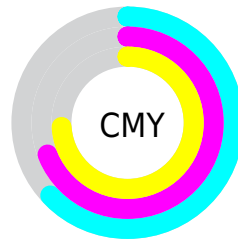


 Cyan (0%)

 Magenta (17%)

 Yellow (31%)

 Black (63%)



 Cyan (63%)

 Magenta (69%)

 Yellow (74%)

Brightness & Saturation Gradients

These gradients show how the YIQ color 82.3020, 13.7090, -0.6510 changes by changing the brightness by 10 percent. The first figure shows a shift by +10% for each color and the second figure -10%.

Similar to the brightness gradients but the following saturation gradients show a change of the YIQ color 82.3020, 13.7090, -0.6510 by changing the saturation by 10% instead.

■ 82.3020, 13.7090,
-0.6510

■ 82.3020, 13.7090,
-0.6510

■ 255.0000, -0.0000,
-0.0000

■ 59.1170, 12.7920,
-0.5520

■ 131.7860, 15.2220,
-0.5380

■ 37.5190, 11.6000,
-0.9760

■ 157.9710, 16.1390,
-0.6370

■ 16.0030, 13.1130,
-0.8630

■ 184.9710, 16.1390,
-0.6370

■ 0.0000, 0.0000,
0.0000

■ 212.2700, 16.7350,
-0.4250

■ 240.5580, 15.8640,
-1.1600

■ 254.3160, 1.9260,

-1.8660

■ 82.3020, 13.7090,
-0.6510

■ 82.3020, 13.7090,
-0.6510

■ 78.3410, 17.9730,
-0.8350

■ 86.3770, 9.1240,
-0.1560

■ 74.2660, 22.5580,
-1.3300

■ 90.3380, 4.8600,
0.0280

■ 69.7180, 27.0970,
-0.9910

■ 95.0000, -0.0000,
-0.0000

■ 65.6430, 31.6820,
-1.4860

■ 98.9610, -4.2640,
0.1840

■ 61.6820, 35.9460,
-1.6700

■ 103.0360, -8.8490,
0.6790

■ 57.6070, 40.5310,
-2.1650

■ 106.9970,
-13.1130, 0.8630

■ 53.6460, 44.7950,
-2.3490

■ 111.6590,
-17.9730, 0.8350

■ 115.6200,
-22.2370, 1.0190

■ 119.6950,
-26.8220, 1.5140

Harmonies

Analogous

The Analogous color harmony consists of three colors that are next to each other on the color wheel.



83.3070, 15.3130, 3.3210



82.3020, 13.7090, -0.6510



81.4430, 8.7580, -4.5380

Triad

The Triadic color harmony groups three colors that are evenly spaced from another and form a triangle on the color wheel.



82.3020, 13.7090, -0.6510



78.5850, -15.1290, -6.6570



83.0310, -1.2850, 6.7710

Complementary

The Complementary color scheme is a pair of colors which are on the opposite of each other on the color wheel.



82.3020, 13.7090, -0.6510



78.6980, -13.7090, 0.6510

Split Complementary

Split-complementary colors differ from the complementary color scheme. The scheme consists of three colors, the original color and two neighbors of the complement color.



81.5460, -10.2250, 3.5910



82.3020, 13.7090, -0.6510



78.8990, -18.8890, -4.5930

Square

The Square scheme is like the rectangle color scheme, but the four colors are evenly spaced on the color wheel.



82.3020, 13.7090, -0.6510



79.0650, -7.7930, -7.4490



80.2030, -16.6890, -0.4090



83.7500, 6.8760, 7.5480

Rectangle

The Rectangle color scheme consists of four colors that form a rectangle on the color wheel.



82.3020, 13.7090, -0.6510



80.7520, 3.3940, -6.4460



80.2030, -16.6890, -0.4090



82.6500, -4.5860, 6.0220

Sweetspot

The Sweet Spot groups the original color and five complimentary colors.



82.3020, 13.7090, -0.6510



117.2240, 5.1810, -0.2830



76.4950, 12.1480, 11.1240



57.8540, 3.3470, -0.0850



189.0000, -0.0000, -0.0000



61.0000, 0.0000, -0.0000

Same Dimension

The Same Dimension uses a secret algorithm to generate beautiful new colors.



82.3020, 13.7090, -0.6510



102.1950, 21.3200, -0.9200



90.5200, 9.8590, -7.9730



46.3700, 1.8340, -0.1980



62.8380, 53.0020, -2.4060



134.5690, 113.6150, -5.0810

Inverse Universe

The Inverse Universe completely reimagines the original color for something new.



78.6980, -13.7090, 0.6510



96.8050, -21.3200, 0.9200



70.4800, -9.8590, 7.9730



45.6300, -1.8340, 0.1980



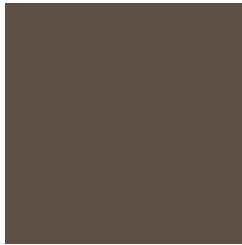
49.1620, -53.0020, 2.4060



104.8440, -113.3400, 5.6040

Previews

White Background



This preview shows how the YIQ color 82.3020, 13.7090, -0.6510 looks on a white background.

Color Contrast Check

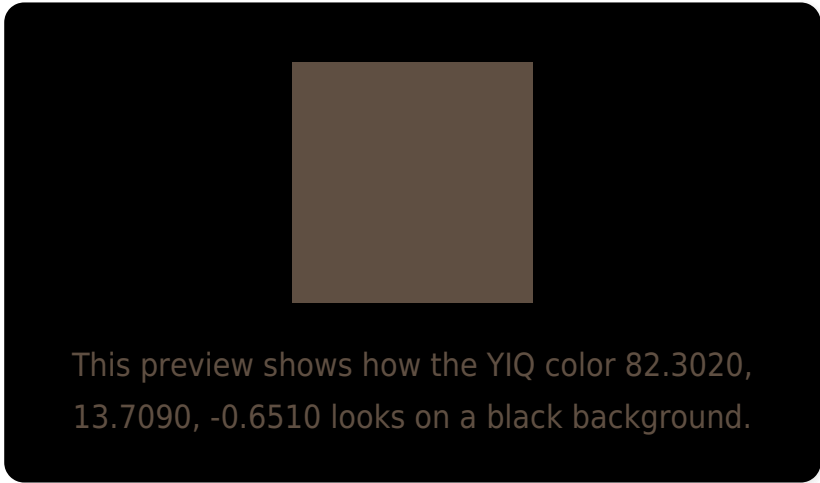
Large Text (above 18pt) WCAG AA ✓ Pass

Any Text WCAG AA ✓ Pass

Large Text (above 18pt) WCAG AAA ✓ Pass

Any Text WCAG AAA ✓ Pass

Black Background



Color Contrast Check

Large Text (above 18pt) WCAG AA × Fail

Any Text WCAG AA × Fail

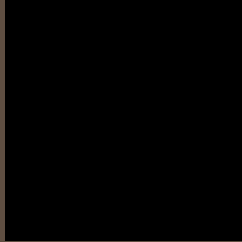
Large Text (above 18pt) WCAG AAA × Fail

Any Text WCAG AAA × Fail

If you want to check with other color combinations, try the [Color Contrast Checker](#).

YIQ 82.3020, 13.7090, -0.6510

Background



This preview shows how black text looks on a background with the YIQ color 82.3020, 13.7090, -0.6510.



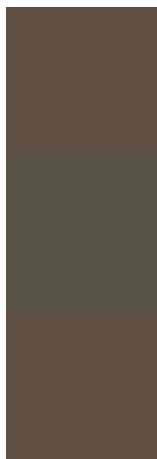
This preview shows how white text looks on a background with the YIQ color 82.3020, 13.7090,

-0.6510.

Color Blindness Simulation

Color vision deficiency is a very complex topic, and I could not describe the different causes any better than Wikipedia does, so if you want to learn more, you should check out their [article about color blindness](#).

Dichromacy



Original Color

82.3020, 13.7090, -0.6510

Protanopia

81.7850, 7.7950, -3.6050

Deuteranopia

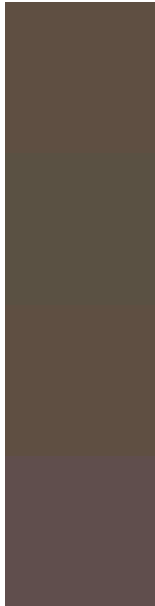
82.3020, 13.7090, -0.6510



Tritanopia

83.6640, 9.9940, 6.1060

Trichromacy



Original Color

82.3020, 13.7090, -0.6510

Protanomaly

82.0950, 9.8580, -2.4460

Deuteranomaly

82.3020, 13.7090, -0.6510

Tritanomaly

83.2680, 11.0490, 3.5050

Monochromacy



Original Color

82.3020, 13.7090, -0.6510

Achromatopsia

82.0000, 0.0000, -0.0000

Achromatomaly

82.2240, 5.1810, -0.2830

CSS Examples

Text

The CSS property to change the color of the text to YIQ 82.3020, 13.7090, -0.6510 is called "color". The color property can be set on classes, ids or directly on the HTML element.

This example shows how text in the color `rgb(95, 79, 66)` looks like.

```
.text, #text, p{  
    color:rgb(95, 79, 66)  
}
```

If you want to add a text shadow in that color use the text-shadow property, you can generate a text shadow directly with our [CSS Text Shadow Generator](#).

Here you see how black text with a 4 pixel rgb(95, 79, 66) colored shadow looks like.

```
.shadow{ text-shadow: 4px 4px 2px rgb(95, 79, 66) }
```

Border

The CSS property to change the border of an element to YIQ 82.3020, 13.7090, -0.6510 is called "border". The border property can be set on classes, ids or directly on the HTML element.

This example shows the color as border, it can be applied via the CSS property "border" or "border-color".

```
.border, #border, table{ border:4px solid rgb(95, 79, 66) }
```


If only the border color should be changed use the property `border-color`.

```
.border{ border-color:rgb(95, 79, 66) }
```

If you want to add a box shadow in that color use:

Here you see how a box with a 4 pixel `rgb(95, 79, 66)` colored shadow looks like.

```
.boxshadow{ -moz-box-shadow:4px 4px 4px  
4px rgb(95, 79, 66); -webkit-box-  
shadow:4px 4px 4px 4px rgb(95, 79, 66);  
box-shadow:4px 4px 4px 4px rgb(95, 79, 66)  
}
```

Background

The CSS property to change the background color of an element to YIQ 82.3020, 13.7090, -0.6510 is called "background". The background property can be set on classes, ids or directly on the HTML element.

```
.background, #background, body{  
background: rgb(95, 79, 66) }
```

If only the background color should be changed can be used:

```
.background{ background-color: rgb(95, 79,  
66) }
```

This example shows the color as background, it is applied via the CSS property "background".

To optimize and compress your CSS code, you can use our [online CSS compressor and optimizer](#) based on csstidy. If you want to create a linear or radial gradient as background or border, check our [CSS Gradient Generator](#).

Hey! You found this booklet interesting? Support Converting Colors with the new Membership Option!

The pro membership hides all ads, plus gives you double the colors in the color bucket, and more awesome pro features!

[Learn more, Memberships starting at \\$2.50/m!](#)

**Follow me
on Twitter!**

@ConvertingColor