

Converting Colors

YIQ(83.2350, 15.8160, 10.7280)

Have a look what the booklet for
YIQ(83.2350, 15.8160, 10.7280)
contains.

YIQ(83.2350, 15.8160, 10.7280)	3
<i>Conversions</i>	4
<i>Details</i>	6
<i>Harmonies</i>	12
<i>Previews</i>	24
<i>Color Blindness Simulation</i>	28
<i>CSS Examples</i>	31

Color

**YIQ(83.2350, 15.8160,
10.7280)**

Conversions

Conversions Part 1

Format	Color
Hex	694854
RGB	105, 72, 84
RGB Percent	41%, 28%, 33%
CMY	0.5881, 0.7177, 0.6705
CMYK	0.00, 0.31, 0.20, 0.59
HSL	338°, 19%, 35%
HSV	338°, 31%, 41%
XYZ	9.7455, 8.2778, 9.4744
YIQ	83.2350, 15.8160, 10.7280

Conversions

Conversions Part 2

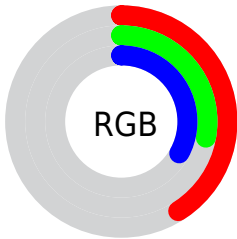
Format	Color
R_{YB}	105, 72, 84
Decimal	6899796
CIE _{Lab}	34.55, 16.11, -1.46
CIE _{LCh}	35, 16.180, 354.815
Yxy	8.2778, 0.3544, 0.3010
Android (android.graphics.Color)	4285089876 (0xFF694854)
YUV	83.2350, 0.3771, 19.0879
Hunter-Lab	28.7712, 10.1126, 0.6155

Details

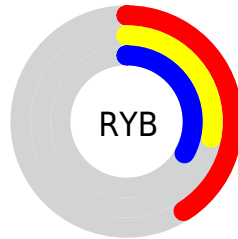
The YIQ color **83.2350, 15.8160, 10.7280** is a dark color, and the websafe version is hex **663333**. A complement of this color would be **93.7650, -15.8160, -10.7280**, and the grayscale version is **83.0000, -0.0000, 0.0000**.

A 20% lighter version of the original color is **133.1320, 17.6040, 11.3640**, and **37.9250, 13.7530, 9.5690** is the 20% darker color. If you saturate the color by 10%, you get **75.9800, 21.0880, 14.3040**, and if you desaturate by 10%, it is **89.9030, 10.8190, 7.6750**.

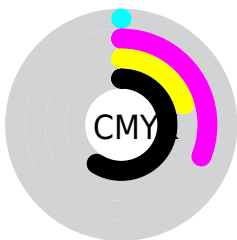
Distribution



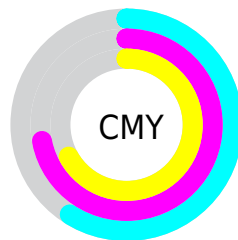
- Red (41%)
- Green (28%)
- Blue (33%)



- Red (41%)
- Yellow (28%)
- Blue (33%)



- Cyan (0%)
- Magenta (31%)
- Yellow (20%)
- Black (59%)



- Cyan (59%)
- Magenta (72%)
- Yellow (67%)

Brightness & Saturation Gradients

These gradients show how the YIQ color 83.2350, 15.8160, 10.7280 changes by changing the brightness by 10 percent. The first figure shows a shift by +10% for each color and the second figure -10%.

Similar to the brightness gradients but the following saturation gradients show a change of the YIQ color 83.2350, 15.8160, 10.7280 by changing the saturation by 10% instead.

■ 83.2350, 15.8160,
10.7280

■ 83.2350, 15.8160,
10.7280

■ 255.0000, -0.0000,
-0.0000

■ 59.6370, 14.6240,
10.3040

■ 133.1320, 17.6040,
11.3640

■ 37.9250, 13.7530,
9.5690

■ 159.5450, 17.8790,
11.8870

■ 15.2780, 14.2570,
11.4490

■ 186.2570, 18.7500,
12.6220

■ 0.0000, 0.0000,
0.0000

■ 214.1430, 19.0710,
12.3110

■ 238.3700, 11.0020,
9.8660

■ 83.2350, 15.8160,
10.7280

■ 83.2350, 15.8160,
10.7280

■ 75.9800, 21.0880,
14.3040

■ 89.9030, 10.8190,
7.6750

■ 69.4260, 25.7640,
17.6680

■ 97.0440, 5.8680,
3.7880

■ 62.1710, 31.0360,
21.2440

■ 103.7120, 0.8710,
0.7350

■ 55.5030, 36.0330,
24.2970

■ 110.9670, -4.4010,
-2.8410

■ 48.3620, 40.9840,
28.1840

■ 118.1080, -9.3520,
-6.7280

■ 41.6940, 45.9810,
31.2370

■ 124.7760,
-14.3490, -9.7810

■ 35.7270, 50.3820,
34.0780

■ 132.0310,
-19.6210, -13.3570

■ 138.5850,

-24.2970, -16.7210

■ 145.8400,
-29.5690, -20.2970

Harmonies

Analogous

The Analogous color harmony consists of three colors that are next to each other on the color wheel.



83.0860, 6.0500, 11.5060



83.2350, 15.8160, 10.7280



82.3510, 21.1810, 7.1090

Triad

The Triadic color harmony groups three colors that are evenly spaced from another and form a triangle on the color wheel.



83.2350, 15.8160, 10.7280



79.5410, 5.3660, -9.1460



75.8640, -28.9760, -3.5040

Complementary

The Complementary color scheme is a pair of colors which are on the opposite of each other on the color wheel.



83.2350, 15.8160, 10.7280



93.7650, -15.8160, -10.7280

Split Complementary

Split-complementary colors differ from the complementary color scheme. The scheme consists of three colors, the original color and two neighbors of the complement color.



74.7020, -28.7000, -8.5080



83.2350, 15.8160, 10.7280



77.7290, -6.9670, -11.4070

Square

The Square scheme is like the rectangle color scheme, but the four colors are evenly spaced on the color wheel.



83.2350, 15.8160, 10.7280



81.1510, 15.4520, -4.7080



75.7970, -18.8420, -10.9540



79.4570, -20.2200, 3.0120

Rectangle

The Rectangle color scheme consists of four colors that form a rectangle on the color wheel.



83.2350, 15.8160, 10.7280



82.1290, 21.6860, 3.4620



75.7970, -18.8420, -10.9540



75.2120, -30.0760, -5.5960

Sweetspot

The Sweet Spot groups the original color and five complimentary colors.



83.2350, 15.8160, 10.7280



129.4570, 6.1430, 4.3110



82.0410, 1.9230, 14.7150



63.7340, 3.8050, 2.6290



196.0000, -0.0000, -0.0000



69.0000, -0.0000, -0.0000

Same Dimension

The Same Dimension uses a secret algorithm to generate beautiful new colors.



83.2350, 15.8160, 10.7280



103.0130, 25.4890, 17.1450



84.2150, 18.5680, 4.9040



50.0220, 2.9340, 1.8940



39.8850, 55.9290, 38.1770



83.4010, 117.4510, 79.6190

Inverse Universe

The Inverse Universe completely reimagines the original color for something new.



83.2350, 15.8160, 10.7280



103.0130, 25.4890, 17.1450



92.7850, -18.5680, -4.9040



50.0220, 2.9340, 1.8940



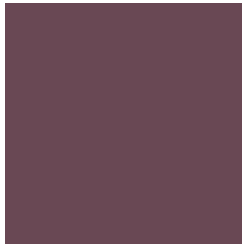
39.8850, 55.9290, 38.1770



83.4010, 117.4510, 79.6190

Previews

White Background



This preview shows how the YIQ color 83.2350, 15.8160, 10.7280 looks on a white background.

Color Contrast Check

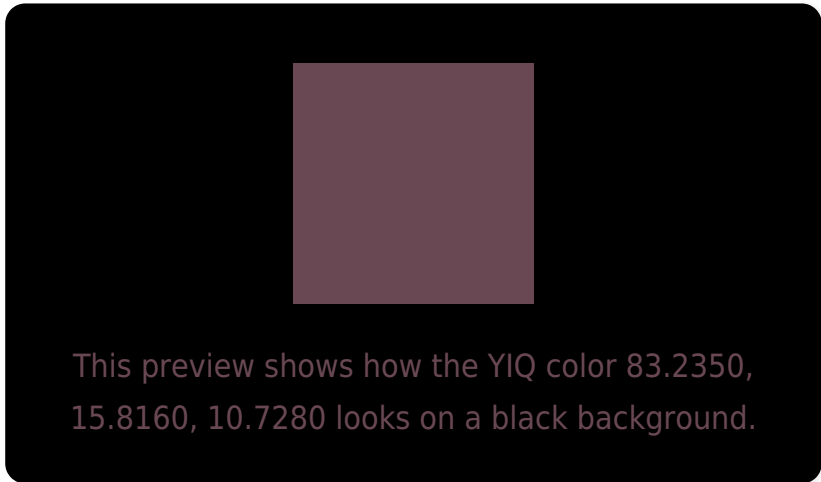
Large Text (above 18pt) WCAG AA ✓ Pass

Any Text WCAG AA ✓ Pass

Large Text (above 18pt) WCAG AAA ✓ Pass

Any Text WCAG AAA ✓ Pass

Black Background



Color Contrast Check

Large Text (above 18pt) WCAG AA × Fail

Any Text WCAG AA × Fail

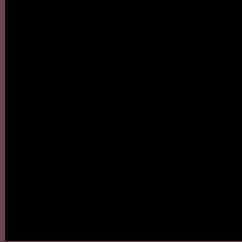
Large Text (above 18pt) WCAG AAA × Fail

Any Text WCAG AAA × Fail

If you want to check with other color combinations, try the [Color Contrast Checker](#).

YIQ 83.2350, 15.8160, 10.7280

Background



This preview shows how black text looks on a background with the YIQ color 83.2350, 15.8160, 10.7280.



This preview shows how white text looks on a background with the YIQ color 83.2350, 15.8160,

Color Blindness Simulation

Color vision deficiency is a very complex topic, and I could not describe the different causes any better than Wikipedia does, so if you want to learn more, you should check out their [article about color blindness](#).

Dichromacy



Original Color

83.2350, 15.8160, 10.7280

Protanopia

81.9120, -2.5680, 2.4880

Deuteranopia

82.4460, 4.6760, 3.3640



Tritanopia

82.8390, 16.8710, 8.1270

Trichromacy



Original Color

83.2350, 15.8160, 10.7280

Protanomaly

82.6140, 4.2630, 5.3430

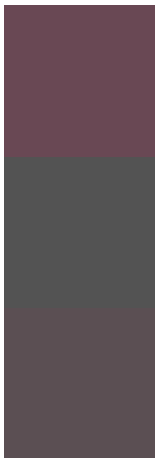
Deuteranomaly

82.4790, 9.0770, 6.2050

Tritanomaly

83.0670, 16.2290, 8.7490

Monochromacy



Original Color

83.2350, 15.8160, 10.7280

Achromatopsia

83.0000, -0.0000, 0.0000

Achromatomaly

83.0440, 5.8680, 3.7880

CSS Examples

Text

The CSS property to change the color of the text to YIQ 83.2350, 15.8160, 10.7280 is called "color". The color property can be set on classes, ids or directly on the HTML element.

This example shows how text in the color `rgb(105, 72, 84)` looks like.

```
.text, #text, p{  
    color:rgb(105, 72, 84)  
}
```

If you want to add a text shadow in that color use the text-shadow property, you can generate a text shadow directly with our [CSS Text Shadow Generator](#).

Here you see how black text with a 4 pixel rgb(105, 72, 84) colored shadow looks like.

```
.shadow{ text-shadow: 4px 4px 2px rgb(105, 72, 84) }
```

Border

The CSS property to change the border of an element to YIQ 83.2350, 15.8160, 10.7280 is called "border". The border property can be set on classes, ids or directly on the HTML element.

This example shows the color as border, it can be applied via the CSS property "border" or "border-color".

```
.border, #border, table{ border:4px solid rgb(105, 72, 84) }
```


If only the border color should be changed use the property `border-color`.

```
.border{ border-color:rgb(105, 72, 84) }
```

If you want to add a box shadow in that color use:

Here you see how a box with a 4 pixel `rgb(105, 72, 84)` colored shadow looks like.

```
.boxshadow{ -moz-box-shadow:4px 4px 4px  
4px rgb(105, 72, 84); -webkit-box-  
shadow:4px 4px 4px 4px rgb(105, 72, 84);  
box-shadow:4px 4px 4px 4px rgb(105, 72,  
84) }
```

Background

The CSS property to change the background color of an element to YIQ 83.2350, 15.8160, 10.7280 is called "background". The background property can be set on classes, ids or directly on the HTML element.

```
.background, #background, body{  
background: rgb(105, 72, 84) }
```

If only the background color should be changed can be used:

```
.background{ background-color: rgb(105, 72,  
84) }
```

This example shows the color as background, it is applied via the CSS property "background".

To optimize and compress your CSS code, you can use our [online CSS compressor and optimizer](#) based on csstidy. If you want to create a linear or radial gradient as background or border, check our [CSS Gradient Generator](#).

Hey! You found this booklet interesting? Support Converting Colors with the new Membership Option!

The pro membership hides all ads, plus gives you double the colors in the color bucket, and more awesome pro features!

[Learn more, Memberships starting at \\$2.50/m!](#)

**Follow me
on Twitter!**

@ConvertingColor