

Converting Colors

YIQ(83.7730, 8.0690, 2.4450)

Have a look what the booklet for
YIQ(83.7730, 8.0690, 2.4450)
contains.

YIQ(83.7730, 8.0690, 2.4450)	3
<i>Conversions</i>	4
<i>Details</i>	6
<i>Harmonies</i>	12
<i>Previews</i>	24
<i>Color Blindness Simulation</i>	27
<i>CSS Examples</i>	30

Color

YIQ(83.7730, 8.0690, 2.4450)

Conversions

Conversions Part 1

Format	Color
Hex	5D504F
RGB	93, 80, 79
RGB Percent	36%, 31%, 31%
CMY	0.6353, 0.6863, 0.6902
CMYK	0.00, 0.14, 0.15, 0.64
HSL	4°, 8%, 34%
HSV	4°, 15%, 36%
XYZ	8.7948, 8.6287, 8.6007
YIQ	83.7730, 8.0690, 2.4450

Conversions

Conversions Part 2

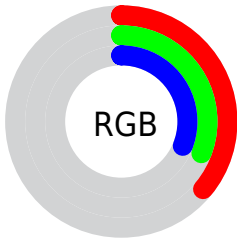
Format	Color
RYB	93, 80, 79
Decimal	6115407
CIELab	35.26, 5.21, 2.56
CIELCh	35, 5.804, 26.229
Yxy	8.6287, 0.3379, 0.3316
Android (android.graphics.Color)	4284305487 (0xFF5D504F)
YUV	83.7730, -2.3531, 8.0921
Hunter-Lab	29.3747, 2.0375, 3.2026

Details

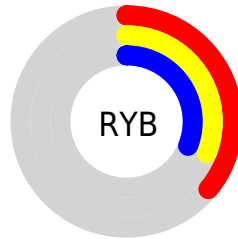
The YIQ color **83.7730, 8.0690, 2.4450** is a dark color, and the websafe version is hex **666666**. A complement of this color would be **88.2270, -8.0690, -2.4450**, and the grayscale version is **84.0000, -0.0000, -0.0000**.

A 20% lighter version of the original color is **133.0720, 8.6650, 2.6570**, and **39.1750, 6.8770, 2.0210** is the 20% darker color. If you saturate the color by 10%, you get **77.4640, 13.4330, 4.3530**, and if you desaturate by 10%, it is **90.0820, 2.7050, 0.5370**.

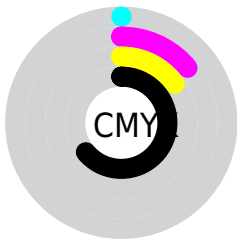
Distribution



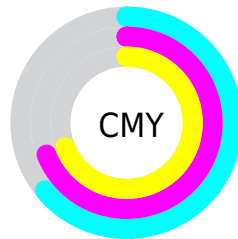
- Red (36%)
- Green (31%)
- Blue (31%)



- Red (36%)
- Yellow (31%)
- Blue (31%)



- Cyan (0%)
- Magenta (14%)
- Yellow (15%)
- Black (64%)



- Cyan (64%)
- Magenta (69%)
- Yellow (69%)

Brightness & Saturation Gradients

These gradients show how the YIQ color 83.7730, 8.0690, 2.4450 changes by changing the brightness by 10 percent. The first figure shows a shift by +10% for each color and the second figure -10%.

Similar to the brightness gradients but the following saturation gradients show a change of the YIQ color 83.7730, 8.0690, 2.4450 by changing the saturation by 10% instead.

■ 83.7730, 8.0690,
2.4450

■ 83.7730, 8.0690,
2.4450

■ 255.0000, -0.0000,
-0.0000

■ 60.4740, 7.4730,
2.2330

■ 133.0720, 8.6650,
2.6570

■ 39.1750, 6.8770,
2.0210

■ 159.3710, 9.2610,
2.8690

■ 17.7730, 8.0690,
2.4450

■ 186.3710, 9.2610,
2.8690

■ 0.0000, 0.0000,
0.0000

■ 214.2570, 9.5820,
2.5580

■ 242.6700, 9.8570,
3.0810

■ 83.7730, 8.0690,
2.4450

■ 83.7730, 8.0690,
2.4450

■ 77.4640, 13.4330,
4.3530

■ 90.0820, 2.7050,
0.5370

■ 71.6280, 18.8430,
5.4270

■ 95.9180, -2.7050,
-0.5370

■ 65.3190, 24.2070,
7.3350

■ 102.2270, -8.0690,
-2.4450

■ 59.0100, 29.5710,
9.2430

■ 108.5360,
-13.4330, -4.3530

■ 53.2880, 34.6600,
10.6280

■ 114.3720,
-18.8430, -5.4270

■ 46.8650, 40.3450,
12.2250

■ 120.6810,
-24.2070, -7.3350

■ 40.5560, 45.7090,
14.1330

■ 126.9900,
-29.5710, -9.2430

■ 34.8340, 50.7980,

■ 132.7120,

15.5180

-34.6600, -10.6280

■ 31.9160, 53.5030,
16.0550

■ 139.1350,
-40.3450, -12.2250

Harmonies

Analogous

The Analogous color harmony consists of three colors that are next to each other on the color wheel.



84.0440, 5.8680, 3.7880



83.7730, 8.0690, 2.4450



83.3060, 7.8860, 0.2540

Triad

The Triadic color harmony groups three colors that are evenly spaced from another and form a triangle on the color wheel.



83.7730, 8.0690, 2.4450



81.8100, -2.5210, -3.8730



82.2320, -6.4650, 1.5270

Complementary

The Complementary color scheme is a pair of colors which are on the opposite of each other on the color wheel.



83.7730, 8.0690, 2.4450



88.2270, -8.0690, -2.4450

Split Complementary

Split-complementary colors differ from the complementary color scheme. The scheme consists of three colors, the original color and two neighbors of the complement color.



81.9820, -8.7570, -0.9890



83.7730, 8.0690, 2.4450



81.6570, -6.4640, -4.0000

Square

The Square scheme is like the rectangle color scheme, but the four colors are evenly spaced on the color wheel.



83.7730, 8.0690, 2.4450



82.3760, 1.6970, -3.2230



81.6290, -9.2610, -2.8690



83.3250, -2.2930, 3.0110

Rectangle

The Rectangle color scheme consists of four colors that form a rectangle on the color wheel.



83.7730, 8.0690, 2.4450



83.1810, 6.7400, -1.0040



81.6290, -9.2610, -2.8690



82.5200, -7.3360, 0.7920

Sweetspot

The Sweet Spot groups the original color and five complimentary colors.



83.7730, 8.0690, 2.4450



115.7940, 3.5760, 1.2720



84.6680, 4.1710, 7.0110



58.8970, 1.7880, 0.6360



189.0000, -0.0000, -0.0000



61.0000, 0.0000, -0.0000

Same Dimension

The Same Dimension uses a secret algorithm to generate beautiful new colors.



83.7730, 8.0690, 2.4450



105.7520, 12.5620, 3.6180



87.8820, 6.1440, -1.2160



43.0820, 2.7050, 0.5370



37.5860, 63.3600, 19.1360



80.8420, 136.5770, 41.3530

Inverse Universe

The Inverse Universe completely reimagines the original color for something new.



88.2270, -8.0690, -2.4450



112.2480, -12.5620, -3.6180



84.1180, -6.1440, 1.2160



44.5050, -2.9800, -1.0600



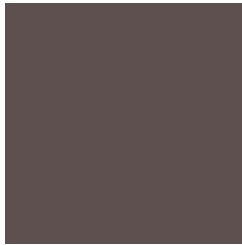
72.4140, -63.3600, -19.1360



156.1580, -136.5770, -41.3530

Previews

White Background



This preview shows how the YIQ color 83.7730, 8.0690, 2.4450 looks on a white background.

Color Contrast Check

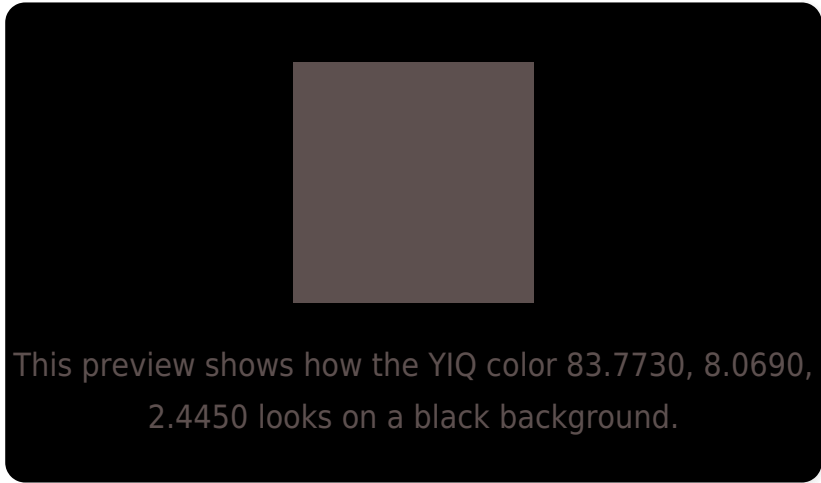
Large Text (above 18pt) WCAG AA ✓ Pass

Any Text WCAG AA ✓ Pass

Large Text (above 18pt) WCAG AAA ✓ Pass

Any Text WCAG AAA ✓ Pass

Black Background



Color Contrast Check

Large Text (above 18pt) WCAG AA × Fail

Any Text WCAG AA × Fail

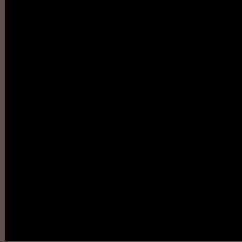
Large Text (above 18pt) WCAG AAA × Fail

Any Text WCAG AAA × Fail

If you want to check with other color combinations, try the [Color Contrast Checker](#).

YIQ 83.7730, 8.0690, 2.4450

Background



This preview shows how black text looks on a background with the YIQ color 83.7730, 8.0690, 2.4450.



This preview shows how white text looks on a background with the YIQ color 83.7730, 8.0690, 2.4450.

Color Blindness Simulation

Color vision deficiency is a very complex topic, and I could not describe the different causes any better than Wikipedia does, so if you want to learn more, you should check out their [article about color blindness](#).

Dichromacy



Original Color

83.7730, 8.0690, 2.4450

Protanopia

83.2560, 2.1550, -0.5090

Deuteranopia

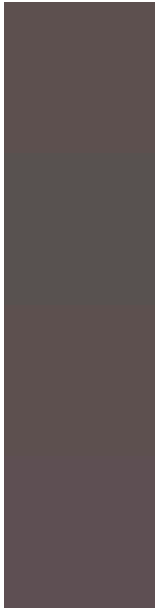
83.7730, 8.0690, 2.4450



Tritanopia

84.1690, 7.0140, 5.0460

Trichromacy



Original Color

83.7730, 8.0690, 2.4450

Protanomaly

83.5660, 4.2180, 0.6500

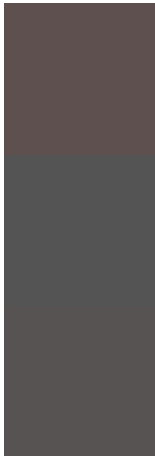
Deuteranomaly

83.7730, 8.0690, 2.4450

Tritanomaly

83.9410, 7.6560, 4.4240

Monochromacy



Original Color

83.7730, 8.0690, 2.4450

Achromatopsia

84.0000, -0.0000, -0.0000

Achromatomaly

84.0820, 2.7050, 0.5370

CSS Examples

Text

The CSS property to change the color of the text to YIQ 83.7730, 8.0690, 2.4450 is called "color". The color property can be set on classes, ids or directly on the HTML element.

This example shows how text in the color `rgb(93, 80, 79)` looks like.

```
.text, #text, p{  
    color:rgb(93, 80, 79)  
}
```

If you want to add a text shadow in that color use the text-shadow property, you can generate a text shadow directly with our [CSS Text Shadow Generator](#).

Here you see how black text with a 4 pixel rgb(93, 80, 79) colored shadow looks like.

```
.shadow{ text-shadow: 4px 4px 2px rgb(93, 80, 79) }
```

Border

The CSS property to change the border of an element to YIQ 83.7730, 8.0690, 2.4450 is called "border". The border property can be set on classes, ids or directly on the HTML element.

This example shows the color as border, it can be applied via the CSS property "border" or "border-color".

```
.border, #border, table{ border:4px solid rgb(93, 80, 79) }
```

If only the border color should be changed use the property `border-color`.

```
.border{ border-color:rgb(93, 80, 79) }
```

If you want to add a box shadow in that color use:

Here you see how a box with a 4 pixel `rgb(93, 80, 79)` colored shadow looks like.

```
.boxshadow{ -moz-box-shadow:4px 4px 4px  
4px rgb(93, 80, 79); -webkit-box-  
shadow:4px 4px 4px 4px rgb(93, 80, 79);  
box-shadow:4px 4px 4px 4px rgb(93, 80, 79)  
}
```


Background

The CSS property to change the background color of an element to YIQ 83.7730, 8.0690, 2.4450 is called "background". The background property can be set on classes, ids or directly on the HTML element.

```
.background, #background, body{  
background: rgb(93, 80, 79) }
```

If only the background color should be changed can be used:

```
.background{ background-color: rgb(93, 80,  
79) }
```

This example shows the color as background, it is applied via the CSS property "background".

To optimize and compress your CSS code, you can use our [online CSS compressor and optimizer](#) based on csstidy. If you want to create a linear or radial gradient as background or border, check our [CSS Gradient Generator](#).

Hey! You found this booklet interesting? Support Converting Colors with the new Membership Option!

The pro membership hides all ads, plus gives you double the colors in the color bucket, and more awesome pro features!

[Learn more, Memberships starting at \\$2.50/m!](#)

**Follow me
on Twitter!**

@ConvertingColor