

Converting Colors

YIQ(83.8260, 36.0810, 12.4090)

Have a look what the booklet for
YIQ(83.8260, 36.0810, 12.4090)
contains.

YIQ(83.8260, 36.0810, 12.4090)	3
<i>Conversions</i>	4
<i>Details</i>	6
<i>Harmonies</i>	12
<i>Previews</i>	24
<i>Color Blindness Simulation</i>	28
<i>CSS Examples</i>	31

Color

**YIQ(83.8260, 36.0810,
12.4090)**

Conversions

Conversions Part 1

Format	Color
Hex	7E4241
RGB	126, 66, 65
RGB Percent	49%, 26%, 25%
CMY	0.5057, 0.7413, 0.7450
CMYK	0.00, 0.48, 0.48, 0.51
HSL	1°, 32%, 37%
HSV	1°, 48%, 49%
XYZ	11.5115, 8.7139, 6.0818
YIQ	83.8260, 36.0810, 12.4090

Conversions

Conversions Part 2

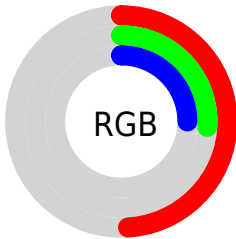
Format	Color
R_{YB}	126, 66, 65
Decimal	8274497
CIE Lab	35.43, 25.71, 12.22
CIE LCh	35, 28.466, 25.414
Yxy	8.7139, 0.4376, 0.3312
Android (android.graphics.Color)	4286464577 (0xFF7E4241)
YUV	83.8260, -9.2812, 36.9866
Hunter-Lab	29.5194, 17.9495, 8.4481

Details

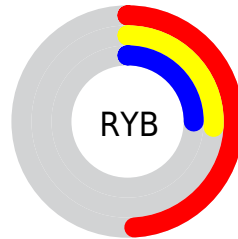
The YIQ color **83.8260, 36.0810, 12.4090** is a dark color, and the websafe version is hex **663333**. A complement of this color would be **107.1740, -36.0810, -12.4090**, and the grayscale version is **84.0000, -0.0000, -0.0000**.

A 20% lighter version of the original color is **134.5060, 39.9780, 13.3700**, and **36.1890, 30.6250, 12.1690** is the 20% darker color. If you saturate the color by 10%, you get **75.3000, 43.5540, 14.6420**, and if you desaturate by 10%, it is **92.3520, 28.6080, 10.1760**.

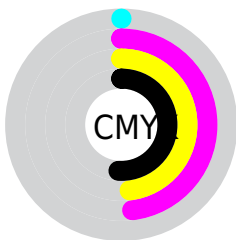
Distribution



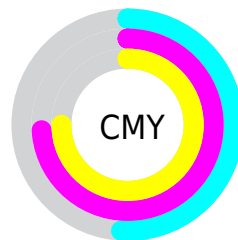
- Red (49%)
- Green (26%)
- Blue (25%)



- Red (49%)
- Yellow (26%)
- Blue (25%)



- Cyan (0%)
- Magenta (48%)
- Yellow (48%)
- Black (51%)



- Cyan (51%)
- Magenta (74%)
- Yellow (75%)

Brightness & Saturation Gradients

These gradients show how the YIQ color 83.8260, 36.0810, 12.4090 changes by changing the brightness by 10 percent. The first figure shows a shift by +10% for each color and the second figure -10%.

Similar to the brightness gradients but the following saturation gradients show a change of the YIQ color 83.8260, 36.0810, 12.4090 by changing the saturation by 10% instead.

83.8260, 36.0810,
12.4090

83.8260, 36.0810,
12.4090

255.0000, -0.0000,
-0.0000

59.7440, 33.3760,
11.8720

134.5060, 39.9780,
13.3700

36.4880, 31.2210,
12.3810

161.2890, 42.0870,
13.6950

14.9500, 29.8000,
10.6000

188.8870, 43.2790,
14.1190

4.4850, 8.9400,
3.1800

212.5980, 36.7230,
11.7870

0.0000, 0.0000,
0.0000

232.1120, 20.3560,
5.5400

252.4410, 3.0720,

-0.6080

■ 83.8260, 36.0810,
12.4090

■ 83.8260, 36.0810,
12.4090

■ 75.3000, 43.5540,
14.6420

■ 92.3520, 28.6080,
10.1760

■ 66.3010, 50.9810,
17.7090

■ 101.3510, 21.1810,
7.1090

■ 57.7750, 58.4540,
19.9420

■ 109.8770, 13.7080,
4.8760

■ 48.7760, 65.8810,
23.0090

■ 118.8760, 6.2810,
1.8090

■ 40.2500, 73.3540,
25.2420

■ 127.4020, -1.1920,
-0.4240

■ 38.8480, 74.5460,
25.6660

■ 135.9280, -8.6650,
-2.6570

■ 144.9270,
-16.0920, -5.7240

■ 153.4530,
-23.5650, -7.9570

■ 162.4520,
-30.9920, -11.0240

Harmonies

Analogous

The Analogous color harmony consists of three colors that are next to each other on the color wheel.



85.2630, 27.7810, 19.6610



83.8260, 36.0810, 12.4090



83.0780, 34.8910, 0.9310

Triad

The Triadic color harmony groups three colors that are evenly spaced from another and form a triangle on the color wheel.



83.8260, 36.0810, 12.4090



75.4520, -13.7970, -19.7890



76.4250, -43.5570, 1.9390

Complementary

The Complementary color scheme is a pair of colors which are on the opposite of each other on the color wheel.



83.8260, 36.0810, 12.4090



107.1740, -36.0810, -12.4090

Split Complementary

Split-complementary colors differ from the complementary color scheme. The scheme consists of three colors, the original color and two neighbors of the complement color.



67.6840, -63.8200, -10.7960



83.8260, 36.0810, 12.4090



65.0700, -50.8880, -24.9040

Square

The Square scheme is like the rectangle color scheme, but the four colors are evenly spaced on the color wheel.



83.8260, 36.0810, 12.4090



79.6520, 9.1270, -16.7370



67.3930, -58.8670, -17.9630



84.4290, -13.8490, 14.2070

Rectangle

The Rectangle color scheme consists of four colors that form a rectangle on the color wheel.



83.8260, 36.0810, 12.4090



82.2250, 29.8030, -5.9810



67.3930, -58.8670, -17.9630



69.4120, -59.8780, -5.1420

Sweetspot

The Sweet Spot groups the original color and five complimentary colors.



83.8260, 36.0810, 12.4090



146.1760, 14.3040, 5.0880



90.1930, 16.7750, 31.9030



71.4850, 8.9400, 3.1800



209.0000, 0.0000, 0.0000



82.0000, 0.0000, -0.0000

Same Dimension

The Same Dimension uses a secret algorithm to generate beautiful new colors.



83.8260, 36.0810, 12.4090



97.6930, 55.7490, 19.4050



101.4360, 27.8310, -3.2810



59.0930, 4.1720, 1.4840



39.4460, 75.7380, 26.0900



0.0000, 0.0000, 0.0000

Inverse Universe

The Inverse Universe completely reimagines the original color for something new.



107.1740, -36.0810, -12.4090



134.3070, -55.7490, -19.4050



90.1510, -28.1060, 2.7580



61.9070, -4.1720, -1.4840



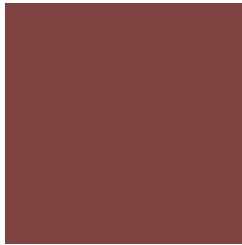
88.5540, -75.7380, -26.0900



0.0000, 0.0000, 0.0000

Previews

White Background



This preview shows how the YIQ color 83.8260, 36.0810, 12.4090 looks on a white background.

Color Contrast Check

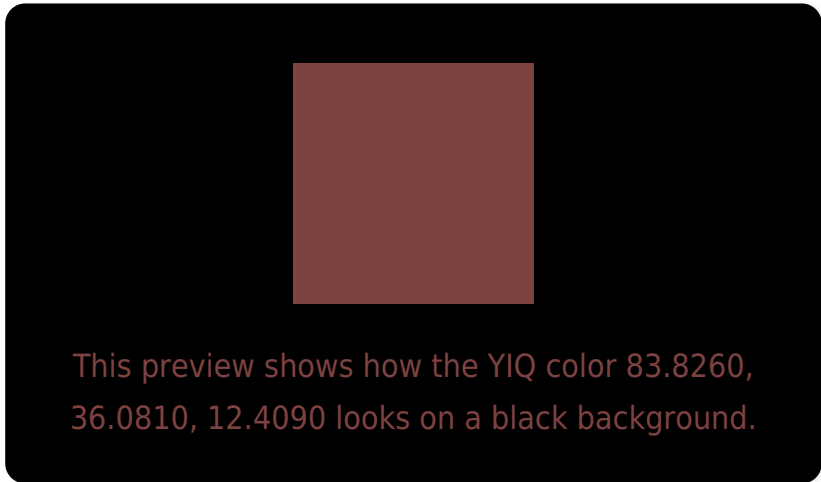
Large Text (above 18pt) WCAG AA ✓ Pass

Any Text WCAG AA ✓ Pass

Large Text (above 18pt) WCAG AAA ✓ Pass

Any Text WCAG AAA ✓ Pass

Black Background



Color Contrast Check

Large Text (above 18pt) WCAG AA × Fail

Any Text WCAG AA × Fail

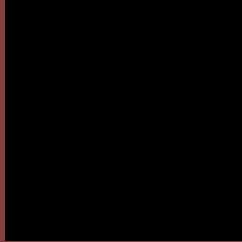
Large Text (above 18pt) WCAG AAA × Fail

Any Text WCAG AAA × Fail

If you want to check with other color combinations, try the [Color Contrast Checker](#).

YIQ 83.8260, 36.0810, 12.4090

Background



This preview shows how black text looks on a background with the YIQ color 83.8260, 36.0810, 12.4090.



This preview shows how white text looks on a background with the YIQ color 83.8260, 36.0810,

Color Blindness Simulation

Color vision deficiency is a very complex topic, and I could not describe the different causes any better than Wikipedia does, so if you want to learn more, you should check out their [article about color blindness](#).

Dichromacy



Original Color

83.8260, 36.0810, 12.4090

Protanopia

83.9420, 5.9150, -2.5730

Deuteranopia

83.7430, 16.7810, -1.2590



Tritanopia

83.8090, 34.7510, 14.4870

Trichromacy



Original Color

83.8260, 36.0810, 12.4090

Protanomaly

83.6770, 17.1470, 3.1230

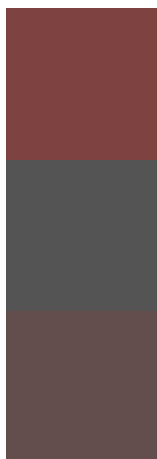
Deuteranomaly

83.9120, 23.7950, 3.7870

Tritanomaly

83.5810, 35.3930, 13.8650

Monochromacy



Original Color

83.8260, 36.0810, 12.4090

Achromatopsia

84.0000, -0.0000, -0.0000

Achromatomaly

83.5780, 13.1120, 4.6640

CSS Examples

Text

The CSS property to change the color of the text to YIQ 83.8260, 36.0810, 12.4090 is called "color". The color property can be set on classes, ids or directly on the HTML element.

This example shows how text in the color `rgb(126, 66, 65)` looks like.

```
.text, #text, p{  
    color:rgb(126, 66, 65)  
}
```

If you want to add a text shadow in that color use the text-shadow property, you can generate a text shadow directly with our [CSS Text Shadow Generator](#).

Here you see how black text with a 4 pixel rgb(126, 66, 65) colored shadow looks like.

```
.shadow{ text-shadow: 4px 4px 2px rgb(126, 66, 65) }
```

Border

The CSS property to change the border of an element to YIQ 83.8260, 36.0810, 12.4090 is called "border". The border property can be set on classes, ids or directly on the HTML element.

This example shows the color as border, it can be applied via the CSS property "border" or "border-color".

```
.border, #border, table{ border:4px solid rgb(126, 66, 65) }
```


If only the border color should be changed use the property `border-color`.

```
.border{ border-color:rgb(126, 66, 65) }
```

If you want to add a box shadow in that color use:

Here you see how a box with a 4 pixel `rgb(126, 66, 65)` colored shadow looks like.

```
.boxshadow{ -moz-box-shadow:4px 4px 4px  
4px rgb(126, 66, 65); -webkit-box-  
shadow:4px 4px 4px 4px rgb(126, 66, 65);  
box-shadow:4px 4px 4px 4px rgb(126, 66,  
65) }
```

Background

The CSS property to change the background color of an element to YIQ 83.8260, 36.0810, 12.4090 is called "background". The background property can be set on classes, ids or directly on the HTML element.

```
.background, #background, body{  
background: rgb(126, 66, 65) }
```

If only the background color should be changed can be used:

```
.background{ background-color: rgb(126, 66,  
65) }
```

This example shows the color as background, it is applied via the CSS property "background".

To optimize and compress your CSS code, you can use our [online CSS compressor and optimizer](#) based on csstidy. If you want to create a linear or radial gradient as background or border, check our [CSS Gradient Generator](#).

Hey! You found this booklet interesting? Support Converting Colors with the new Membership Option!

The pro membership hides all ads, plus gives you double the colors in the color bucket, and more awesome pro features!

[Learn more, Memberships starting at \\$2.50/m!](#)

**Follow me
on Twitter!**

@ConvertingColor