

Converting Colors

YIQ(85.2950, 15.5870, 9.3710)

Have a look what the booklet for
YIQ(85.2950, 15.5870, 9.3710)
contains.

YIQ(85.2950, 15.5870, 9.3710)	3
<i>Conversions</i>	4
<i>Details</i>	6
<i>Harmonies</i>	12
<i>Previews</i>	24
<i>Color Blindness Simulation</i>	28
<i>CSS Examples</i>	31

Color

**YIQ(85.2950, 15.5870,
9.3710)**

Conversions

Conversions Part 1

Format	Color
Hex	6A4B54
RGB	106, 75, 84
RGB Percent	42%, 29%, 33%
CMY	0.5842, 0.7059, 0.6705
CMYK	0.00, 0.29, 0.21, 0.58
HSL	343°, 17%, 35%
HSV	343°, 29%, 42%
XYZ	10.0622, 8.7361, 9.5463
YIQ	85.2950, 15.5870, 9.3710

Conversions

Conversions Part 2

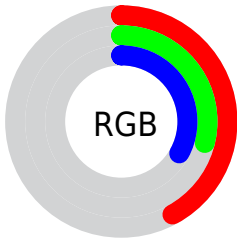
Format	Color
R_{YB}	106, 75, 84
Decimal	6966100
CIE _{Lab}	35.47, 14.67, -0.11
CIE _{LCh}	35, 14.673, 359.586
Yxy	8.7361, 0.3550, 0.3082
Android (android.graphics.Color)	4285156180 (0xFF6A4B54)
YUV	85.2950, -0.6384, 18.1583
Hunter-Lab	29.5569, 9.0432, 1.5404

Details

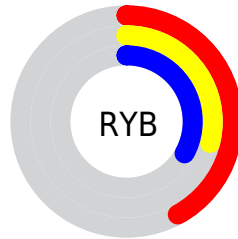
The YIQ color **85.2950, 15.5870, 9.3710** is a dark color, and the websafe version is hex **663333**. A complement of this color would be **95.7050, -15.5870, -9.3710**, and the grayscale version is **85.0000, -0.0000, 0.0000**.

A 20% lighter version of the original color is **135.1920, 17.3750, 10.0070**, and **39.9850, 13.5240, 8.2120** is the 20% darker color. If you saturate the color by 10%, you get **77.9260, 21.1800, 12.6360**, and if you desaturate by 10%, it is **92.6640, 9.9940, 6.1060**.

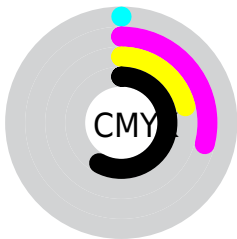
Distribution



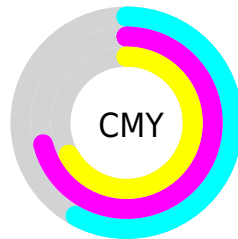
- Red (42%)
- Green (29%)
- Blue (33%)



- Red (42%)
- Yellow (29%)
- Blue (33%)



- Cyan (0%)
- Magenta (29%)
- Yellow (21%)
- Black (58%)



- Cyan (58%)
- Magenta (71%)
- Yellow (67%)

Brightness & Saturation Gradients

These gradients show how the YIQ color 85.2950, 15.5870, 9.3710 changes by changing the brightness by 10 percent. The first figure shows a shift by +10% for each color and the second figure -10%.

Similar to the brightness gradients but the following saturation gradients show a change of the YIQ color 85.2950, 15.5870, 9.3710 by changing the saturation by 10% instead.

■ 85.2950, 15.5870,
9.3710

■ 85.2950, 15.5870,
9.3710

■ 255.0000, -0.0000,
-0.0000

■ 61.6970, 14.3950,
8.9470

■ 135.1920, 17.3750,
10.0070

■ 39.9850, 13.5240,
8.2120

■ 161.6050, 17.6500,
10.5300

■ 17.6260, 13.1570,
9.3570

■ 188.9040, 18.2460,
10.7420

■ 0.0000, 0.0000,
0.0000

■ 216.2030, 18.8420,
10.9540

■ 240.1310, 10.1770,
8.2970

85.2950, 15.5870,
9.3710

85.2950, 15.5870,
9.3710

77.9260, 21.1800,
12.6360

92.6640, 9.9940,
6.1060

71.2580, 26.1770,
15.6890

99.3320, 4.9970,
3.0530

63.8890, 31.7700,
18.9540

106.7010, -0.5960,
-0.2120

57.2210, 36.7670,
22.0070

113.3690, -5.5930,
-3.2650

49.8520, 42.3600,
25.2720

120.7380,
-11.1860, -6.5300

42.5970, 47.6320,
28.8480

127.9930,
-16.4580, -10.1060

35.8150, 52.9500,
31.5900

134.7750,
-21.7760, -12.8480

35.2280, 53.2250,

142.0300,

32.1130

-27.0480, -16.4240

■ 148.8120,
-32.3660, -19.1660

Harmonies

Analogous

The Analogous color harmony consists of three colors that are next to each other on the color wheel.



85.3310, 6.7380, 10.0500



85.2950, 15.5870, 9.3710



84.8130, 19.7600, 5.3280

Triad

The Triadic color harmony groups three colors that are evenly spaced from another and form a triangle on the color wheel.



85.2950, 15.5870, 9.3710



81.5840, 3.8070, -8.4250



79.8430, -24.4830, -2.3310

Complementary

The Complementary color scheme is a pair of colors which are on the opposite of each other on the color wheel.



85.2950, 15.5870, 9.3710



95.7050, -15.5870, -9.3710

Split Complementary

Split-complementary colors differ from the complementary color scheme. The scheme consists of three colors, the original color and two neighbors of the complement color.



78.3110, -26.0410, -7.1370



85.2950, 15.5870, 9.3710



80.0710, -7.9300, -10.4740

Square

The Square scheme is like the rectangle color scheme, but the four colors are evenly spaced on the color wheel.



85.2950, 15.5870, 9.3710



83.0690, 12.7470, -5.2450



78.7370, -18.6130, -9.5970



82.7240, -16.5980, 3.4500

Rectangle

The Rectangle color scheme consists of four colors that form a rectangle on the color wheel.



85.2950, 15.5870, 9.3710



84.4060, 19.3480, 1.7800



78.7370, -18.6130, -9.5970



79.3050, -25.9040, -4.1120

Sweetspot

The Sweet Spot groups the original color and five complimentary colors.



85.2950, 15.5870, 9.3710



129.3430, 6.4640, 4.0000



85.1120, 3.1610, 14.3050



63.6200, 4.1260, 2.3180



196.0000, -0.0000, -0.0000



69.0000, -0.0000, -0.0000

Same Dimension

The Same Dimension uses a secret algorithm to generate beautiful new colors.



85.2950, 15.5870, 9.3710



105.9480, 24.1140, 14.5300



87.7910, 16.8260, 3.4340



50.0220, 2.9340, 1.8940



38.8590, 58.8180, 35.3780



81.3490, 123.2290, 74.0210

Inverse Universe

The Inverse Universe completely reimagines the original color for something new.



85.2950, 15.5870, 9.3710



105.9480, 24.1140, 14.5300



93.2090, -16.8260, -3.4340



50.0220, 2.9340, 1.8940



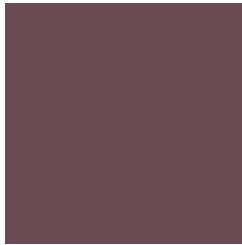
38.8590, 58.8180, 35.3780



81.3490, 123.2290, 74.0210

Previews

White Background



This preview shows how the YIQ color 85.2950, 15.5870, 9.3710 looks on a white background.

Color Contrast Check

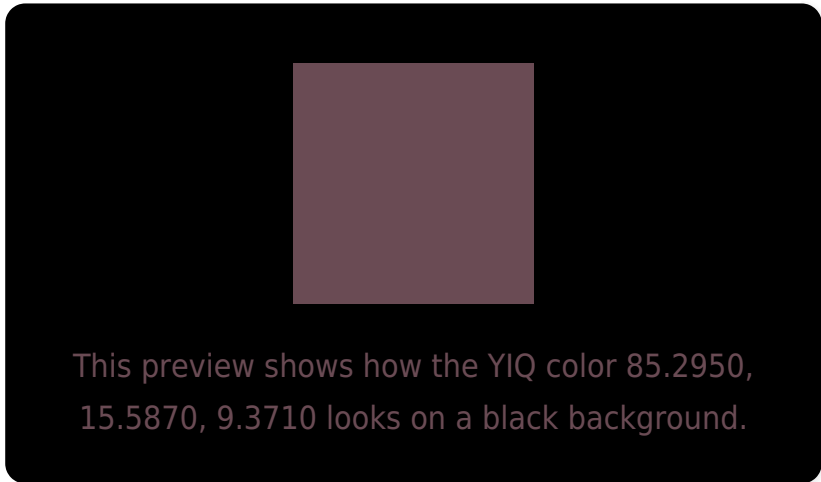
Large Text (above 18pt) WCAG AA ✓ Pass

Any Text WCAG AA ✓ Pass

Large Text (above 18pt) WCAG AAA ✓ Pass

Any Text WCAG AAA ✓ Pass

Black Background



Color Contrast Check

Large Text (above 18pt) WCAG AA × Fail

Any Text WCAG AA × Fail

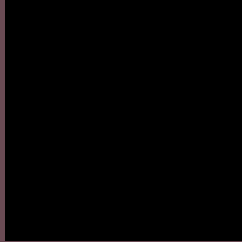
Large Text (above 18pt) WCAG AAA × Fail

Any Text WCAG AAA × Fail

If you want to check with other color combinations, try the [Color Contrast Checker](#).

YIQ 85.2950, 15.5870, 9.3710

Background



This preview shows how black text looks on a background with the YIQ color 85.2950, 15.5870, 9.3710.

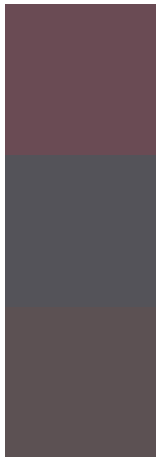


This preview shows how white text looks on a background with the YIQ color 85.2950, 15.5870,

Color Blindness Simulation

Color vision deficiency is a very complex topic, and I could not describe the different causes any better than Wikipedia does, so if you want to learn more, you should check out their [article about color blindness](#).

Dichromacy



Original Color

85.2950, 15.5870, 9.3710

Protanopia

83.9830, -1.3300, 2.0780

Deuteranopia

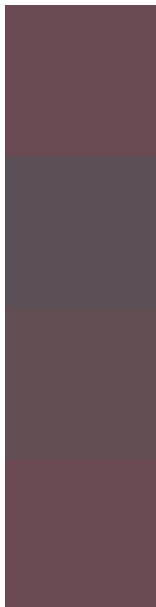
84.5170, 5.9140, 2.9540



Tritanopia

84.9530, 16.5500, 8.4380

Trichromacy



Original Color

85.2950, 15.5870, 9.3710

Protanomaly

84.3860, 4.9050, 4.7210

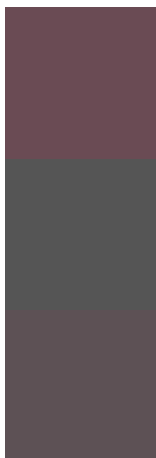
Deuteranomaly

84.8380, 9.4440, 5.0600

Tritanomaly

85.0670, 16.2290, 8.7490

Monochromacy



Original Color

85.2950, 15.5870, 9.3710

Achromatopsia

85.0000, -0.0000, 0.0000

Achromatomaly

85.0440, 5.8680, 3.7880

CSS Examples

Text

The CSS property to change the color of the text to YIQ 85.2950, 15.5870, 9.3710 is called "color". The color property can be set on classes, ids or directly on the HTML element.

This example shows how text in the color `rgb(106, 75, 84)` looks like.

```
.text, #text, p{  
    color:rgb(106, 75, 84)  
}
```

If you want to add a text shadow in that color use the text-shadow property, you can generate a text shadow directly with our [CSS Text Shadow Generator](#).

Here you see how black text with a 4 pixel rgb(106, 75, 84) colored shadow looks like.

```
.shadow{ text-shadow: 4px 4px 2px rgb(106, 75, 84) }
```

Border

The CSS property to change the border of an element to YIQ 85.2950, 15.5870, 9.3710 is called "border". The border property can be set on classes, ids or directly on the HTML element.

This example shows the color as border, it can be applied via the CSS property "border" or "border-color".

```
.border, #border, table{ border:4px solid rgb(106, 75, 84) }
```


If only the border color should be changed use the property `border-color`.

```
.border{ border-color:rgb(106, 75, 84) }
```

If you want to add a box shadow in that color use:

Here you see how a box with a 4 pixel `rgb(106, 75, 84)` colored shadow looks like.

```
.boxshadow{ -moz-box-shadow:4px 4px 4px  
4px rgb(106, 75, 84); -webkit-box-  
shadow:4px 4px 4px 4px rgb(106, 75, 84);  
box-shadow:4px 4px 4px 4px rgb(106, 75,  
84) }
```

Background

The CSS property to change the background color of an element to YIQ 85.2950, 15.5870, 9.3710 is called "background". The background property can be set on classes, ids or directly on the HTML element.

```
.background, #background, body{  
background: rgb(106, 75, 84) }
```

If only the background color should be changed can be used:

```
.background{ background-color: rgb(106, 75,  
84) }
```

This example shows the color as background, it is applied via the CSS property "background".

To optimize and compress your CSS code, you can use our [online CSS compressor and optimizer](#) based on csstidy. If you want to create a linear or radial gradient as background or border, check our [CSS Gradient Generator](#).

Hey! You found this booklet interesting? Support Converting Colors with the new Membership Option!

The pro membership hides all ads, plus gives you double the colors in the color bucket, and more awesome pro features!

[Learn more, Memberships starting at \\$2.50/m!](#)

**Follow me
on Twitter!**

@ConvertingColor