

Converting Colors

YIQ(85.5610, 11.7820, 6.7420)

Have a look what the booklet for
YIQ(85.5610, 11.7820, 6.7420)
contains.

YIQ(85.5610, 11.7820, 6.7420)	3
<i>Conversions</i>	4
<i>Details</i>	6
<i>Harmonies</i>	12
<i>Previews</i>	24
<i>Color Blindness Simulation</i>	28
<i>CSS Examples</i>	31

Color

**YIQ(85.5610, 11.7820,
6.7420)**

Conversions

Conversions Part 1

Format	Color
Hex	654E54
RGB	101, 78, 84
RGB Percent	40%, 31%, 33%
CMY	0.6039, 0.6941, 0.6705
CMYK	0.00, 0.23, 0.17, 0.60
HSL	344°, 13%, 35%
HSV	344°, 23%, 40%
XYZ	9.6929, 8.8552, 9.5881
YIQ	85.5610, 11.7820, 6.7420

Conversions

Conversions Part 2

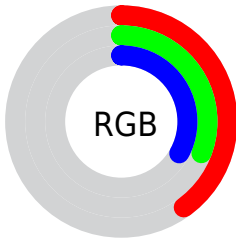
Format	Color
RYB	101, 78, 84
Decimal	6639188
CIELab	35.70, 10.74, 0.17
CIElCh	36, 10.740, 0.886
Yxy	8.8552, 0.3445, 0.3147
Android (android.graphics.Color)	4284829268 (0xFF654E54)
YUV	85.5610, -0.7696, 13.5400
Hunter-Lab	29.7577, 6.0660, 1.7269

Details

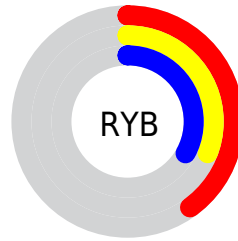
The YIQ color **85.5610, 11.7820, 6.7420** is a dark color, and the websafe version is hex **666666**. A complement of this color would be **93.4390, -11.7820, -6.7420**, and the grayscale version is **86.0000, -0.0000, -0.0000**.

A 20% lighter version of the original color is **135.1590, 12.9740, 7.1660**, and **40.5500, 10.3150, 5.7950** is the 20% darker color. If you saturate the color by 10%, you get **78.8930, 16.7790, 9.7950**, and if you desaturate by 10%, it is **92.2290, 6.7850, 3.6890**.

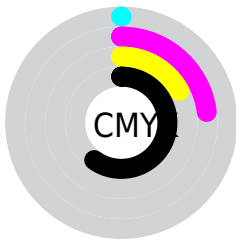
Distribution



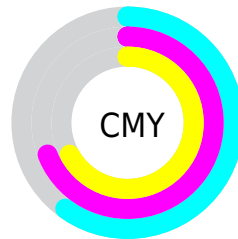
- Red (40%)
- Green (31%)
- Blue (33%)



- Red (40%)
- Yellow (31%)
- Blue (33%)



- Cyan (0%)
- Magenta (23%)
- Yellow (17%)
- Black (60%)



- Cyan (60%)
- Magenta (69%)
- Yellow (67%)

Brightness & Saturation Gradients

These gradients show how the YIQ color 85.5610, 11.7820, 6.7420 changes by changing the brightness by 10 percent. The first figure shows a shift by +10% for each color and the second figure -10%.

Similar to the brightness gradients but the following saturation gradients show a change of the YIQ color 85.5610, 11.7820, 6.7420 by changing the saturation by 10% instead.

85.5610, 11.7820,
6.7420

85.5610, 11.7820,
6.7420

255.0000, -0.0000,
-0.0000

62.2620, 11.1860,
6.5300

135.1590, 12.9740,
7.1660

40.5500, 10.3150,
5.7950

161.5720, 13.2490,
7.6890

19.0770, 10.2690,
6.6290

188.8710, 13.8450,
7.9010

0.0000, 0.0000,
0.0000

216.1700, 14.4410,
8.1130

242.4790, 9.0770,
6.2050

85.5610, 11.7820,
6.7420

85.5610, 11.7820,
6.7420

78.8930, 16.7790,
9.7950

92.2290, 6.7850,
3.6890

72.1110, 22.0970,
12.5370

99.0110, 1.4670,
0.9470

65.4430, 27.0940,
15.5900

105.6790, -3.5300,
-2.1060

58.6610, 32.4120,
18.3320

112.4610, -8.8480,
-4.8480

51.4060, 37.6840,
21.9080

119.7160,
-14.1200, -8.4240

44.6240, 43.0020,
24.6500

126.4980,
-19.4380, -11.1660

37.9560, 47.9990,
27.7030

133.1660,
-24.4350, -14.2190

33.1630, 51.8500,

139.9480,

29.4980

-29.7530, -16.9610

■ 146.6160,
-34.7500, -20.0140

Harmonies

Analogous

The Analogous color harmony consists of three colors that are next to each other on the color wheel.



85.2660, 5.3630, 7.4350



85.5610, 11.7820, 6.7420



85.5350, 14.6710, 3.9430

Triad

The Triadic color harmony groups three colors that are evenly spaced from another and form a triangle on the color wheel.



85.5610, 11.7820, 6.7420



82.5670, 2.4770, -6.3470



81.7900, -16.9640, -0.9320

Complementary

The Complementary color scheme is a pair of colors which are on the opposite of each other on the color wheel.



85.5610, 11.7820, 6.7420



93.4390, -11.7820, -6.7420

Split Complementary

Split-complementary colors differ from the complementary color scheme. The scheme consists of three colors, the original color and two neighbors of the complement color.



80.9700, -17.6510, -5.0030



85.5610, 11.7820, 6.7420



81.4350, -5.9590, -7.6470

Square

The Square scheme is like the rectangle color scheme, but the four colors are evenly spaced on the color wheel.



85.5610, 11.7820, 6.7420



83.2690, 9.3080, -3.4920



80.9550, -13.2950, -6.8550



83.8340, -11.0960, 2.8560

Rectangle

The Rectangle color scheme consists of four colors that form a rectangle on the color wheel.



85.5610, 11.7820, 6.7420



84.9540, 14.8090, 1.4410



80.9550, -13.2950, -6.8550



81.5510, -17.7890, -2.5010

Sweetspot

The Sweet Spot groups the original color and five complimentary colors.



85.5610, 11.7820, 6.7420



123.9190, 4.7220, 2.5300



85.7050, 2.7490, 10.7570



62.6090, 2.6590, 1.3710



194.0000, -0.0000, 0.0000



66.0000, -0.0000, -0.0000

Same Dimension

The Same Dimension uses a secret algorithm to generate beautiful new colors.



85.5610, 11.7820, 6.7420



106.4910, 17.9710, 10.2190



87.8120, 12.3330, 2.2610



47.6090, 2.6590, 1.3710



37.8050, 58.9100, 33.7100



79.5400, 124.0090, 70.8970

Inverse Universe

The Inverse Universe completely reimagines the original color for something new.



85.5610, 11.7820, 6.7420



106.4910, 17.9710, 10.2190



91.1880, -12.3330, -2.2610



47.6090, 2.6590, 1.3710



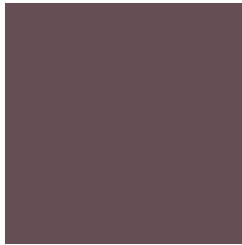
37.8050, 58.9100, 33.7100



79.5400, 124.0090, 70.8970

Previews

White Background



This preview shows how the YIQ color 85.5610, 11.7820, 6.7420 looks on a white background.

Color Contrast Check

Large Text (above 18pt) WCAG AA ✓ Pass

Any Text WCAG AA ✓ Pass

Large Text (above 18pt) WCAG AAA ✓ Pass

Any Text WCAG AAA ✓ Pass

Black Background



This preview shows how the YIQ color 85.5610, 11.7820, 6.7420 looks on a black background.

Color Contrast Check

Large Text (above 18pt) WCAG AA × Fail

Any Text WCAG AA × Fail

Large Text (above 18pt) WCAG AAA × Fail

Any Text WCAG AAA × Fail

If you want to check with other color combinations, try the [Color Contrast Checker](#).

YIQ 85.5610, 11.7820, 6.7420

Background



This preview shows how black text looks on a background with the YIQ color 85.5610, 11.7820, 6.7420.



This preview shows how white text looks on a background with the YIQ color 85.5610, 11.7820,

Color Blindness Simulation

Color vision deficiency is a very complex topic, and I could not describe the different causes any better than Wikipedia does, so if you want to learn more, you should check out their [article about color blindness](#).

Dichromacy



Original Color

85.5610, 11.7820, 6.7420

Protanopia

84.6410, -0.3670, 1.1450

Deuteranopia

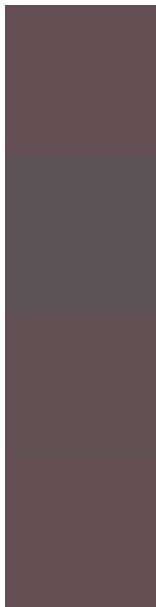
84.8160, 6.5100, 3.1660



Tritanopia

85.5610, 11.7820, 6.7420

Trichromacy



Original Color

85.5610, 11.7820, 6.7420

Protanomaly

85.1470, 4.0800, 3.1520

Deuteranomaly

85.1260, 8.5730, 4.3250

Tritanomaly

85.5610, 11.7820, 6.7420

Monochromacy



Original Color

85.5610, 11.7820, 6.7420

Achromatopsia

86.0000, -0.0000, -0.0000

Achromatomaly

85.6200, 4.1260, 2.3180

CSS Examples

Text

The CSS property to change the color of the text to YIQ 85.5610, 11.7820, 6.7420 is called "color". The color property can be set on classes, ids or directly on the HTML element.

This example shows how text in the color `rgb(101, 78, 84)` looks like.

```
.text, #text, p{  
    color:rgb(101, 78, 84)  
}
```

If you want to add a text shadow in that color use the text-shadow property, you can generate a text shadow directly with our [CSS Text Shadow Generator](#).

Here you see how black text with a 4 pixel rgb(101, 78, 84) colored shadow looks like.

```
.shadow{ text-shadow: 4px 4px 2px rgb(101, 78, 84) }
```

Border

The CSS property to change the border of an element to YIQ 85.5610, 11.7820, 6.7420 is called "border". The border property can be set on classes, ids or directly on the HTML element.

This example shows the color as border, it can be applied via the CSS property "border" or "border-color".

```
.border, #border, table{ border:4px solid rgb(101, 78, 84) }
```


If only the border color should be changed use the property border-color.

```
.border{ border-color:rgb(101, 78, 84) }
```

If you want to add a box shadow in that color use:

Here you see how a box with a 4 pixel rgb(101, 78, 84) colored shadow looks like.

```
.boxshadow{ -moz-box-shadow:4px 4px 4px  
4px rgb(101, 78, 84); -webkit-box-  
shadow:4px 4px 4px 4px rgb(101, 78, 84);  
box-shadow:4px 4px 4px 4px rgb(101, 78,  
84) }
```

Background

The CSS property to change the background color of an element to YIQ 85.5610, 11.7820, 6.7420 is called "background". The background property can be set on classes, ids or directly on the HTML element.

```
.background, #background, body{  
background: rgb(101, 78, 84) }
```

If only the background color should be changed can be used:

```
.background{ background-color: rgb(101, 78,  
84) }
```

This example shows the color as background, it is applied via the CSS property "background".

To optimize and compress your CSS code, you can use our [online CSS compressor and optimizer](#) based on csstidy. If you want to create a linear or radial gradient as background or border, check our [CSS Gradient Generator](#).

Hey! You found this booklet interesting? Support Converting Colors with the new Membership Option!

The pro membership hides all ads, plus gives you double the colors in the color bucket, and more awesome pro features!

[Learn more, Memberships starting at \\$2.50/m!](#)

**Follow me
on Twitter!**

@ConvertingColor