

Converting Colors

YIQ(87.5680, 19.0720, 6.7840)

Have a look what the booklet for
YIQ(87.5680, 19.0720, 6.7840)
contains.

YIQ(87.5680, 19.0720, 6.7840)	3
<i>Conversions</i>	4
<i>Details</i>	6
<i>Harmonies</i>	12
<i>Previews</i>	24
<i>Color Blindness Simulation</i>	28
<i>CSS Examples</i>	31

Color

**YIQ(87.5680, 19.0720,
6.7840)**

Conversions

Conversions Part 1

Format	Color
Hex	6E4E4E
RGB	110, 78, 78
RGB Percent	43%, 31%, 31%
CMY	0.5686, 0.6942, 0.6940
CMYK	0.00, 0.29, 0.29, 0.57
HSL	360°, 17%, 37%
HSV	360°, 29%, 43%
XYZ	10.5321, 9.3134, 8.4539
YIQ	87.5680, 19.0720, 6.7840

Conversions

Conversions Part 2

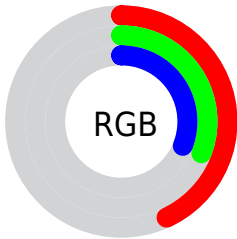
Format	Color
R_{YB}	110, 78, 78
Decimal	7229006
CIE Lab	36.58, 13.52, 5.33
CIE LCh	37, 14.530, 21.539
Yxy	9.3134, 0.3722, 0.3291
Android (android.graphics.Color)	4285419086 (0xFF6E4E4E)
YUV	87.5680, -4.7170, 19.6729
Hunter-Lab	30.5179, 8.1960, 4.9383

Details

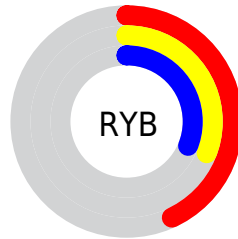
The YIQ color **87.5680, 19.0720, 6.7840** is a dark color, and the websafe version is hex **663333**. A complement of this color would be **100.4320, -19.0720, -6.7840**, and the grayscale version is **88.0000, -0.0000, -0.0000**.

A 20% lighter version of the original color is **137.4650, 20.8600, 7.4200**, and **41.4860, 16.3670, 6.2470** is the 20% darker color. If you saturate the color by 10%, you get **79.8570, 25.6280, 9.1160**, and if you desaturate by 10%, it is **95.2790, 12.5160, 4.4520**.

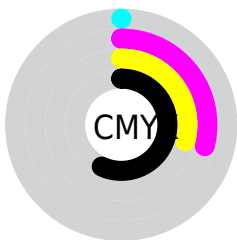
Distribution



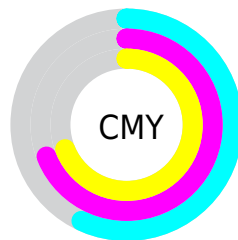
- Red (43%)
- Green (31%)
- Blue (31%)



- Red (43%)
- Yellow (31%)
- Blue (31%)



- Cyan (0%)
- Magenta (29%)
- Yellow (29%)
- Black (57%)



- Cyan (57%)
- Magenta (69%)
- Yellow (69%)

Brightness & Saturation Gradients

These gradients show how the YIQ color 87.5680, 19.0720, 6.7840 changes by changing the brightness by 10 percent. The first figure shows a shift by +10% for each color and the second figure -10%.

Similar to the brightness gradients but the following saturation gradients show a change of the YIQ color 87.5680, 19.0720, 6.7840 by changing the saturation by 10% instead.

■ 87.5680, 19.0720,
6.7840

■ 87.5680, 19.0720,
6.7840

■ 255.0000, -0.0000,
-0.0000

■ 63.9700, 17.8800,
6.3600

■ 137.4650, 20.8600,
7.4200

■ 41.4860, 16.3670,
6.2470

■ 164.0630, 22.0520,
7.8440

■ 20.0730, 16.0920,
5.7240

■ 191.3620, 22.6480,
8.0560

■ 0.0000, 0.0000,
0.0000

■ 219.5470, 23.5650,
7.9570

■ 241.5670, 11.6450,
3.7170

87.5680, 19.0720,
6.7840

87.5680, 19.0720,
6.7840

79.8570, 25.6280,
9.1160

95.2790, 12.5160,
4.4520

72.1460, 32.1840,
11.4480

102.9900, 5.9600,
2.1200

64.4350, 38.7400,
13.7800

110.7010, -0.5960,
-0.2120

56.7240, 45.2960,
16.1120

118.4120, -7.1520,
-2.5440

49.0130, 51.8520,
18.4440

126.1230,
-13.7080, -4.8760

41.3020, 58.4080,
20.7760

133.8340,
-20.2640, -7.2080

33.5910, 64.9640,
23.1080

141.5450,
-26.8200, -9.5400

32.8900, 65.5600,

149.2560,

23.3200

-33.3760, -11.8720

■ 156.9670,
-39.9320, -14.2040

Harmonies

Analogous

The Analogous color harmony consists of three colors that are next to each other on the color wheel.



88.0390, 13.4320, 9.8800



87.5680, 19.0720, 6.7840



86.7050, 19.9440, 1.9920

Triad

The Triadic color harmony groups three colors that are evenly spaced from another and form a triangle on the color wheel.



87.5680, 19.0720, 6.7840



83.3380, -4.3080, -10.0360



84.4140, -18.6610, 2.2910

Complementary

The Complementary color scheme is a pair of colors which are on the opposite of each other on the color wheel.



87.5680, 19.0720, 6.7840



100.4320, -19.0720, -6.7840

Split Complementary

Split-complementary colors differ from the complementary color scheme. The scheme consists of three colors, the original color and two neighbors of the complement color.



81.7180, -25.6290, -3.5890



87.5680, 19.0720, 6.7840



81.2920, -15.8620, -9.8940

Square

The Square scheme is like the rectangle color scheme, but the four colors are evenly spaced on the color wheel.



87.5680, 19.0720, 6.7840



84.6660, 6.5120, -7.8880



81.1540, -24.1610, -8.1690



86.7360, -7.7040, 7.4640

Rectangle

The Rectangle color scheme consists of four colors that form a rectangle on the color wheel.



87.5680, 19.0720, 6.7840



86.2160, 16.8270, -2.0930



81.1540, -24.1610, -8.1690



83.3920, -21.5950, 0.3970

Sweetspot

The Sweet Spot groups the original color and five complimentary colors.



87.5680, 19.0720, 6.7840



133.8870, 7.7480, 2.7560



90.9170, 8.2040, 16.5240



66.0930, 4.1720, 1.4840



199.0000, -0.0000, 0.0000



71.0000, -0.0000, -0.0000

Same Dimension

The Same Dimension uses a secret algorithm to generate beautiful new colors.



87.5680, 19.0720, 6.7840



107.9500, 29.8000, 10.6000



96.3730, 14.9470, -1.0610



51.7940, 3.5760, 1.2720



35.8800, 71.5200, 25.4400



73.8530, 147.2120, 52.3640

Inverse Universe

The Inverse Universe completely reimagines the original color for something new.



87.5680, 19.0720, 6.7840



107.9500, 29.8000, 10.6000



91.6270, -14.9470, 1.0610



51.7940, 3.5760, 1.2720



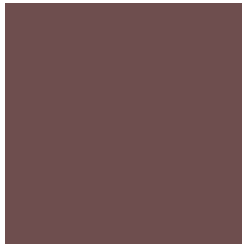
35.8800, 71.5200, 25.4400



73.8530, 147.2120, 52.3640

Previews

White Background



This preview shows how the YIQ color 87.5680, 19.0720, 6.7840 looks on a white background.

Color Contrast Check

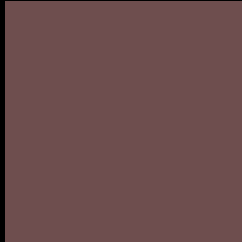
Large Text (above 18pt) WCAG AA ✓ Pass

Any Text WCAG AA ✓ Pass

Large Text (above 18pt) WCAG AAA ✓ Pass

Any Text WCAG AAA ✓ Pass

Black Background



This preview shows how the YIQ color 87.5680, 19.0720, 6.7840 looks on a black background.

Color Contrast Check

Large Text (above 18pt) WCAG AA × Fail

Any Text WCAG AA × Fail

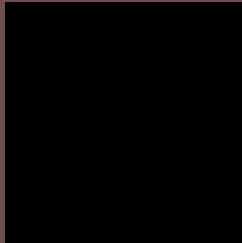
Large Text (above 18pt) WCAG AAA × Fail

Any Text WCAG AAA × Fail

If you want to check with other color combinations, try the [Color Contrast Checker](#).

YIQ 87.5680, 19.0720, 6.7840

Background



This preview shows how black text looks on a background with the YIQ color 87.5680, 19.0720, 6.7840.



This preview shows how white text looks on a background with the YIQ color 87.5680, 19.0720,

Color Blindness Simulation

Color vision deficiency is a very complex topic, and I could not describe the different causes any better than Wikipedia does, so if you want to learn more, you should check out their [article about color blindness](#).

Dichromacy



Original Color

87.5680, 19.0720, 6.7840

Protanopia

86.4410, 3.0720, -0.6080

Deuteranopia

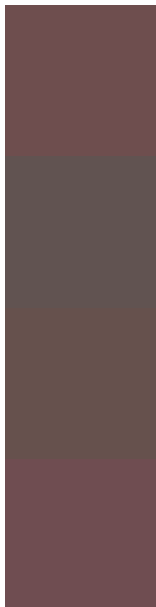
86.8010, 10.8660, 1.3140



Tritanopia

87.8500, 18.3380, 9.0740

Trichromacy



Original Color

87.5680, 19.0720, 6.7840

Protanomaly

86.9580, 8.9860, 2.3460

Deuteranomaly

86.8230, 13.8000, 3.2080

Tritanomaly

87.6220, 18.9800, 8.4520

Monochromacy



Original Color

87.5680, 19.0720, 6.7840

Achromatopsia

88.0000, -0.0000, -0.0000

Achromatomaly

87.5880, 7.1520, 2.5440

CSS Examples

Text

The CSS property to change the color of the text to YIQ 87.5680, 19.0720, 6.7840 is called "color". The color property can be set on classes, ids or directly on the HTML element.

This example shows how text in the color `rgb(110, 78, 78)` looks like.

```
.text, #text, p{  
    color:rgb(110, 78, 78)  
}
```

If you want to add a text shadow in that color use the text-shadow property, you can generate a text shadow directly with our [CSS Text Shadow Generator](#).

Here you see how black text with a 4 pixel rgb(110, 78, 78) colored shadow looks like.

```
.shadow{ text-shadow: 4px 4px 2px rgb(110, 78, 78) }
```

Border

The CSS property to change the border of an element to YIQ 87.5680, 19.0720, 6.7840 is called "border". The border property can be set on classes, ids or directly on the HTML element.

This example shows the color as border, it can be applied via the CSS property "border" or "border-color".

```
.border, #border, table{ border:4px solid rgb(110, 78, 78) }
```


If only the border color should be changed use the property `border-color`.

```
.border{ border-color:rgb(110, 78, 78) }
```

If you want to add a box shadow in that color use:

Here you see how a box with a 4 pixel `rgb(110, 78, 78)` colored shadow looks like.

```
.boxshadow{ -moz-box-shadow:4px 4px 4px  
4px rgb(110, 78, 78); -webkit-box-  
shadow:4px 4px 4px 4px rgb(110, 78, 78);  
box-shadow:4px 4px 4px 4px rgb(110, 78,  
78) }
```

Background

The CSS property to change the background color of an element to YIQ 87.5680, 19.0720, 6.7840 is called "background". The background property can be set on classes, ids or directly on the HTML element.

```
.background, #background, body{  
background: rgb(110, 78, 78) }
```

If only the background color should be changed can be used:

```
.background{ background-color: rgb(110, 78,  
78) }
```

This example shows the color as background, it is applied via the CSS property "background".

To optimize and compress your CSS code, you can use our [online CSS compressor and optimizer](#) based on csstidy. If you want to create a linear or radial gradient as background or border, check our [CSS Gradient Generator](#).

Hey! You found this booklet interesting? Support Converting Colors with the new Membership Option!

The pro membership hides all ads, plus gives you double the colors in the color bucket, and more awesome pro features!

[Learn more, Memberships starting at \\$2.50/m!](#)

**Follow me
on Twitter!**

@ConvertingColor