

Converting Colors

YIQ(87.8820, 15.3120, 8.8480)

Have a look what the booklet for
YIQ(87.8820, 15.3120, 8.8480)
contains.

YIQ(87.8820, 15.3120, 8.8480)	3
<i>Conversions</i>	4
<i>Details</i>	6
<i>Harmonies</i>	12
<i>Previews</i>	24
<i>Color Blindness Simulation</i>	28
<i>CSS Examples</i>	31

Color

**YIQ(87.8820, 15.3120,
8.8480)**

Conversions

Conversions Part 1

Format	Color
Hex	6C4E56
RGB	108, 78, 86
RGB Percent	42%, 31%, 34%
CMY	0.5764, 0.6942, 0.6627
CMYK	0.00, 0.28, 0.20, 0.58
HSL	344°, 16%, 36%
HSV	344°, 28%, 42%
XYZ	10.5905, 9.3085, 10.0456
YIQ	87.8820, 15.3120, 8.8480

Conversions

Conversions Part 2

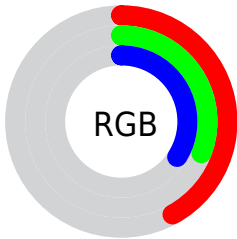
Format	Color
R_{YB}	108, 78, 86
Decimal	7097942
CIE Lab	36.57, 14.00, 0.27
CIE LCh	37, 14.001, 1.098
Yxy	9.3085, 0.3537, 0.3109
Android (android.graphics.Color)	4285288022 (0xFF6C4E56)
YUV	87.8820, -0.9278, 17.6435
Hunter-Lab	30.5098, 8.5684, 1.8352

Details

The YIQ color **87.8820, 15.3120, 8.8480** is a dark color, and the websafe version is hex **666666**. A complement of this color would be **98.1180, -15.3120, -8.8480**, and the grayscale version is **88.0000, -0.0000, -0.0000**.

A 20% lighter version of the original color is **137.8930, 16.7790, 9.7950**, and **41.9850, 13.5240, 8.2120** is the 20% darker color. If you saturate the color by 10%, you get **80.5130, 20.9050, 12.1130**, and if you desaturate by 10%, it is **95.2510, 9.7190, 5.5830**.

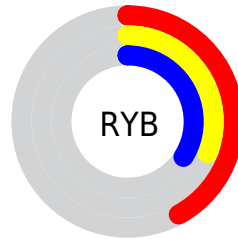
Distribution



Red (42%)

Green (31%)

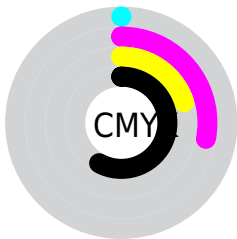
Blue (34%)



Red (42%)

Yellow (31%)

Blue (34%)

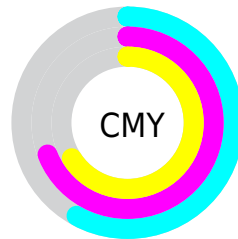


Cyan (0%)

Magenta (28%)

Yellow (20%)

Black (58%)



Cyan (58%)

Magenta (69%)

Yellow (66%)

Brightness & Saturation Gradients

These gradients show how the YIQ color 87.8820, 15.3120, 8.8480 changes by changing the brightness by 10 percent. The first figure shows a shift by +10% for each color and the second figure -10%.

Similar to the brightness gradients but the following saturation gradients show a change of the YIQ color 87.8820, 15.3120, 8.8480 by changing the saturation by 10% instead.

■ 87.8820, 15.3120,
8.8480

■ 87.8820, 15.3120,
8.8480

■ 255.0000, -0.0000,
-0.0000

■ 64.2840, 14.1200,
8.4240

■ 137.8930, 16.7790,
9.7950

■ 41.9850, 13.5240,
8.2120

■ 164.1920, 17.3750,
10.0070

■ 20.5010, 12.0110,
8.0990

■ 191.4910, 17.9710,
10.2190

■ 0.0000, 0.0000,
0.0000

■ 219.7900, 18.5670,
10.4310

■ 242.7070, 8.4350,
6.8270

87.8820, 15.3120,
8.8480

87.8820, 15.3120,
8.8480

80.5130, 20.9050,
12.1130

95.2510, 9.7190,
5.5830

73.1440, 26.4980,
15.3780

102.6200, 4.1260,
2.3180

66.3620, 31.8160,
18.1200

109.4020, -1.1920,
-0.4240

58.9930, 37.4090,
21.3850

116.7710, -6.7850,
-3.6890

51.6240, 43.0020,
24.6500

124.1400,
-12.3780, -6.9540

44.3690, 48.2740,
28.2260

131.5090,
-17.9710, -10.2190

37.0000, 53.8670,
31.4910

138.7640,
-23.2430, -13.7950

35.5980, 55.0590,

145.5460,

31.9150

-28.5610, -16.5370

■ 152.9150,
-34.1540, -19.8020

Harmonies

Analogous

The Analogous color harmony consists of three colors that are next to each other on the color wheel.



88.2170, 7.0590, 9.7390



87.8820, 15.3120, 8.8480



87.5140, 19.1640, 5.1160

Triad

The Triadic color harmony groups three colors that are evenly spaced from another and form a triangle on the color wheel.



87.8820, 15.3120, 8.8480



84.3990, 2.8900, -8.3260



82.7400, -22.6950, -1.6950

Complementary

The Complementary color scheme is a pair of colors which are on the opposite of each other on the color wheel.



87.8820, 15.3120, 8.8480



98.1180, -15.3120, -8.8480

Split Complementary

Split-complementary colors differ from the complementary color scheme. The scheme consists of three colors, the original color and two neighbors of the complement color.



81.2080, -24.2530, -6.5010



87.8820, 15.3120, 8.8480



82.5980, -7.9760, -9.6400

Square

The Square scheme is like the rectangle color scheme, but the four colors are evenly spaced on the color wheel.



87.8820, 15.3120, 8.8480



85.2970, 12.1050, -4.6230



81.1500, -18.3380, -9.0740



85.2080, -15.0850, 3.5630

Rectangle

The Rectangle color scheme consists of four colors that form a rectangle on the color wheel.



87.8820, 15.3120, 8.8480



87.1070, 18.7520, 1.5680



81.1500, -18.3380, -9.0740



82.2020, -24.1160, -3.4760

Sweetspot

The Sweet Spot groups the original color and five complimentary colors.



87.8820, 15.3120, 8.8480



132.6310, 5.5930, 3.2650



87.9980, 3.4820, 13.9940



66.3210, 3.5300, 2.1060



199.0000, -0.0000, 0.0000



71.0000, -0.0000, -0.0000

Same Dimension

The Same Dimension uses a secret algorithm to generate beautiful new colors.



87.8820, 15.3120, 8.8480



109.1220, 23.5640, 13.4840



90.4920, 16.2300, 3.2220



50.0220, 2.9340, 1.8940



38.5170, 59.7810, 34.4450



80.6650, 125.1550, 72.1550

Inverse Universe

The Inverse Universe completely reimagines the original color for something new.



87.8820, 15.3120, 8.8480



109.1220, 23.5640, 13.4840



95.5080, -16.2300, -3.2220



50.0220, 2.9340, 1.8940



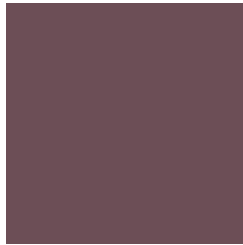
38.5170, 59.7810, 34.4450



80.6650, 125.1550, 72.1550

Previews

White Background



This preview shows how the YIQ color 87.8820, 15.3120, 8.8480 looks on a white background.

Color Contrast Check

Large Text (above 18pt) WCAG AA ✓ Pass

Any Text WCAG AA ✓ Pass

Large Text (above 18pt) WCAG AAA ✓ Pass

Any Text WCAG AAA ✓ Pass

Black Background



This preview shows how the YIQ color 87.8820, 15.3120, 8.8480 looks on a black background.

Color Contrast Check

Large Text (above 18pt) WCAG AA × Fail

Any Text WCAG AA × Fail

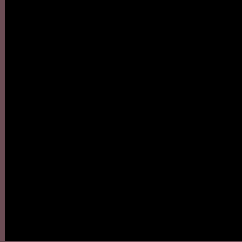
Large Text (above 18pt) WCAG AAA × Fail

Any Text WCAG AAA × Fail

If you want to check with other color combinations, try the [Color Contrast Checker](#).

YIQ 87.8820, 15.3120, 8.8480

Background



This preview shows how black text looks on a background with the YIQ color 87.8820, 15.3120, 8.8480.



This preview shows how white text looks on a background with the YIQ color 87.8820, 15.3120,

Color Blindness Simulation

Color vision deficiency is a very complex topic, and I could not describe the different causes any better than Wikipedia does, so if you want to learn more, you should check out their [article about color blindness](#).

Dichromacy



Original Color

87.8820, 15.3120, 8.8480

Protanopia

86.8690, -1.0090, 1.7670

Deuteranopia

86.8160, 6.5100, 3.1660



Tritanopia

87.6540, 15.9540, 8.2260

Trichromacy



Original Color

87.8820, 15.3120, 8.8480

Protanomaly

87.2720, 5.2260, 4.4100

Deuteranomaly

87.1370, 10.0400, 5.2720

Tritanomaly

87.7680, 15.6330, 8.5370

Monochromacy



Original Color

87.8820, 15.3120, 8.8480

Achromatopsia

88.0000, -0.0000, -0.0000

Achromatomaly

87.6310, 5.5930, 3.2650

CSS Examples

Text

The CSS property to change the color of the text to YIQ 87.8820, 15.3120, 8.8480 is called "color". The color property can be set on classes, ids or directly on the HTML element.

This example shows how text in the color `rgb(108, 78, 86)` looks like.

```
.text, #text, p{  
    color:rgb(108, 78, 86)  
}
```

If you want to add a text shadow in that color use the text-shadow property, you can generate a text shadow directly with our [CSS Text Shadow Generator](#).

Here you see how black text with a 4 pixel rgb(108, 78, 86) colored shadow looks like.

```
.shadow{ text-shadow: 4px 4px 2px rgb(108, 78, 86) }
```

Border

The CSS property to change the border of an element to YIQ 87.8820, 15.3120, 8.8480 is called "border". The border property can be set on classes, ids or directly on the HTML element.

This example shows the color as border, it can be applied via the CSS property "border" or "border-color".

```
.border, #border, table{ border:4px solid rgb(108, 78, 86) }
```


If only the border color should be changed use the property border-color.

```
.border{ border-color:rgb(108, 78, 86) }
```

If you want to add a box shadow in that color use:

Here you see how a box with a 4 pixel rgb(108, 78, 86) colored shadow looks like.

```
.boxshadow{ -moz-box-shadow:4px 4px 4px  
4px rgb(108, 78, 86); -webkit-box-  
shadow:4px 4px 4px 4px rgb(108, 78, 86);  
box-shadow:4px 4px 4px 4px rgb(108, 78,  
86) }
```

Background

The CSS property to change the background color of an element to YIQ 87.8820, 15.3120, 8.8480 is called "background". The background property can be set on classes, ids or directly on the HTML element.

```
.background, #background, body{  
background: rgb(108, 78, 86) }
```

If only the background color should be changed can be used:

```
.background{ background-color: rgb(108, 78,  
86) }
```

This example shows the color as background, it is applied via the CSS property "background".

To optimize and compress your CSS code, you can use our [online CSS compressor and optimizer](#) based on csstidy. If you want to create a linear or radial gradient as background or border, check our [CSS Gradient Generator](#).

Hey! You found this booklet interesting? Support Converting Colors with the new Membership Option!

The pro membership hides all ads, plus gives you double the colors in the color bucket, and more awesome pro features!

[Learn more, Memberships starting at \\$2.50/m!](#)

**Follow me
on Twitter!**

@ConvertingColor