

# Converting Colors

YIQ(89.8060, 12.4700, 5.2860)

Have a look what the booklet for  
YIQ(89.8060, 12.4700, 5.2860)  
contains.

<b>YIQ(89.8060, 12.4700, 5.2860)</b> .....	3
<b><i>Conversions</i></b> .....	4
<b><i>Details</i></b> .....	6
<b><i>Harmonies</i></b> .....	12
<b><i>Previews</i></b> .....	24
<b><i>Color Blindness Simulation</i></b> .....	28
<b><i>CSS Examples</i></b> .....	31

# Color

**YIQ(89.8060, 12.4700,  
5.2860)**

# Conversions

## Conversions Part 1

<b>Format</b>	<b>Color</b>
Hex	695355
RGB	105, 83, 85
RGB Percent	41%, 33%, 33%
CMY	0.5882, 0.6745, 0.6666
CMYK	0.00, 0.21, 0.19, 0.59
HSL	354°, 12%, 37%
HSV	354°, 21%, 41%
XYZ	10.5600, 9.8453, 9.9406
YIQ	89.8060, 12.4700, 5.2860

# Conversions

## Conversions Part 2

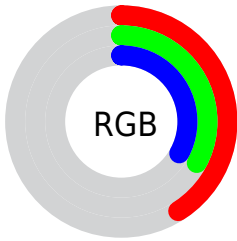
<b>Format</b>	<b>Color</b>
<b>R<sub>YB</sub></b>	105, 83, 85
Decimal	6902613
CIE Lab	37.56, 9.49, 2.29
CIE LCh	38, 9.766, 13.585
Yxy	9.8453, 0.3480, 0.3244
Android (android.graphics.Color)	4285092693 (0xFF695355)
YUV	89.8060, -2.3694, 13.3251
Hunter-Lab	31.3771, 5.1645, 3.1803

# Details

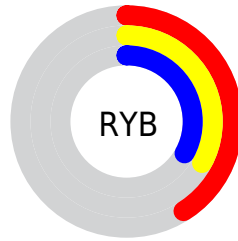
The YIQ color **89.8060, 12.4700, 5.2860** is a dark color, and the websafe version is hex **666666**. A complement of this color would be **98.1940, -12.4700, -5.2860**, and the grayscale version is **90.0000, -0.0000, -0.0000**.

A 20% lighter version of the original color is **140.4040, 13.6620, 5.7100**, and **43.9090, 10.6820, 4.6500** is the 20% darker color. If you saturate the color by 10%, you get **82.2090, 18.7050, 7.9290**, and if you desaturate by 10%, it is **96.8160, 6.5100, 3.1660**.

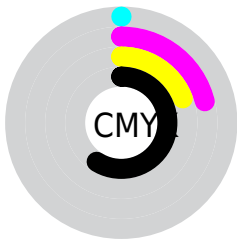
# Distribution



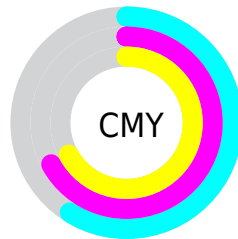
- Red (41%)
- Green (33%)
- Blue (33%)



- Red (41%)
- Yellow (33%)
- Blue (33%)



- Cyan (0%)
- Magenta (21%)
- Yellow (19%)
- Black (59%)



- Cyan (59%)
- Magenta (67%)
- Yellow (67%)

# Brightness & Saturation Gradients

These gradients show how the YIQ color 89.8060, 12.4700, 5.2860 changes by changing the brightness by 10 percent. The first figure shows a shift by +10% for each color and the second figure -10%.

Similar to the brightness gradients but the following saturation gradients show a change of the YIQ color 89.8060, 12.4700, 5.2860 by changing the saturation by 10% instead.



■ 89.8060, 12.4700,  
5.2860

■ 89.8060, 12.4700,  
5.2860

■ 255.0000, -0.0000,  
-0.0000

■ 66.5070, 11.8740,  
5.0740

■ 140.4040, 13.6620,  
5.7100

■ 43.9090, 10.6820,  
4.6500

■ 166.7030, 14.2580,  
5.9220

■ 23.3110, 9.4900,  
4.2260

■ 193.7030, 14.2580,  
5.9220

■ 0.0000, 0.0000,  
0.0000

■ 221.3010, 15.4500,  
6.3460

■ 246.1150, 7.1060,  
3.3780

■ 89.8060, 12.4700,  
5.2860

■ 89.8060, 12.4700,  
5.2860

■ 82.2090, 18.7050,  
7.9290

■ 96.8160, 6.5100,  
3.1660

■ 75.3130, 24.3440,  
10.3600

■ 104.2990, 0.5960,  
0.2120

■ 67.7160, 30.5790,  
13.0030

■ 111.3090, -5.3640,  
-1.9080

■ 60.8200, 36.2180,  
15.4340

■ 118.7920,  
-11.2780, -4.8620

■ 53.2230, 42.4530,  
18.0770

■ 126.3890,  
-17.5130, -7.5050

■ 46.3270, 48.0920,  
20.5080

■ 133.2850,  
-23.1520, -9.9360

■ 38.7300, 54.3270,  
23.1510

■ 140.8820,  
-29.3870, -12.5790

■ 32.5350, 59.3700,

■ 147.7780,

25.3700

-35.0260, -15.0100

■ 155.3750,  
-41.2610, -17.6530

# Harmonies

## Analogous

The Analogous color harmony consists of three colors that are next to each other on the color wheel.



89.8210, 8.1140, 7.1380



89.8060, 12.4700, 5.2860



89.2960, 13.8460, 2.3740

# Triad

The Triadic color harmony groups three colors that are evenly spaced from another and form a triangle on the color wheel.



89.8060, 12.4700, 5.2860



86.7130, -0.8700, -6.2620



86.9970, -13.1130, 0.8630

# Complementary

The Complementary color scheme is a pair of colors which are on the opposite of each other on the color wheel.



89.8060, 12.4700, 5.2860



98.1940, -12.4700, -5.2860

# Split Complementary

Split-complementary colors differ from the complementary color scheme. The scheme consists of three colors, the original color and two neighbors of the complement color.



85.9210, -15.9550, -2.6990



89.8060, 12.4700, 5.2860



86.2930, -8.4350, -6.8270

# Square

The Square scheme is like the rectangle color scheme, but the four colors are evenly spaced on the color wheel.



89.8060, 12.4700, 5.2860



87.7740, 6.3280, -4.5520



85.4110, -14.5790, -5.6110



88.6280, -7.5200, 4.1280



# Rectangle

The Rectangle color scheme consists of four colors that form a rectangle on the color wheel.



89.8060, 12.4700, 5.2860



89.2310, 12.4710, -0.2410



85.4110, -14.5790, -5.6110



86.5730, -14.8550, -0.6070

# Sweetspot

The Sweet Spot groups the original color and five complimentary colors.



89.8060, 12.4700, 5.2860



131.8050, 5.0430, 2.2190



91.4880, 4.8580, 11.0820



65.4950, 2.9800, 1.0600



196.0000, -0.0000, -0.0000



69.0000, -0.0000, -0.0000



# Same Dimension

The Same Dimension uses a secret algorithm to generate beautiful new colors.



89.8060, 12.4700, 5.2860



113.8070, 19.8970, 8.3530



94.8610, 10.6370, -0.0430



49.9080, 3.2550, 1.5830



36.2370, 66.2010, 28.2250



75.7630, 138.9580, 58.7820



# Inverse Universe

The Inverse Universe completely reimagines the original color for something new.



89.8060, 12.4700, 5.2860



113.8070, 19.8970, 8.3530



93.1390, -10.6370, 0.0430



49.9080, 3.2550, 1.5830



36.2370, 66.2010, 28.2250

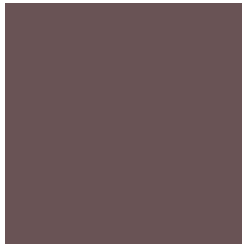


75.7630, 138.9580, 58.7820



# Previews

## White Background



This preview shows how the YIQ color 89.8060, 12.4700, 5.2860 looks on a white background.

## Color Contrast Check

Large Text (above 18pt) WCAG AA ✓ Pass

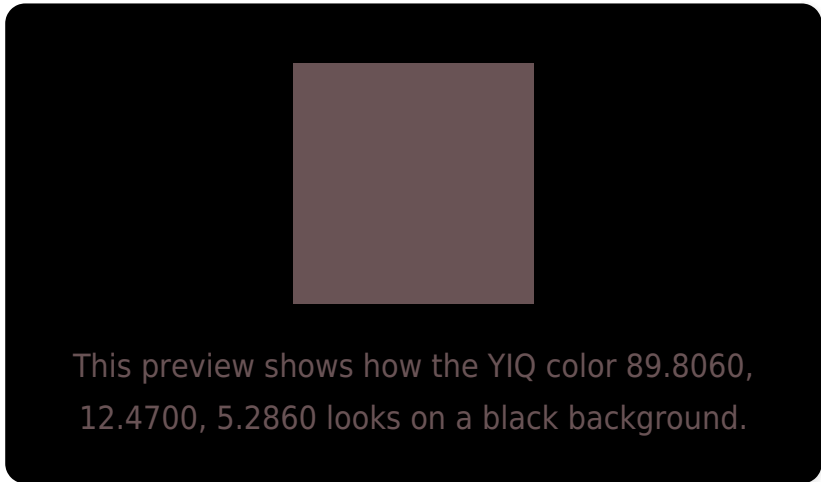
Any Text WCAG AA ✓ Pass

Large Text (above 18pt) WCAG AAA ✓ Pass

Any Text WCAG AAA ✓ Pass



# Black Background



## Color Contrast Check

Large Text (above 18pt) WCAG AA × Fail

Any Text WCAG AA × Fail

Large Text (above 18pt) WCAG AAA × Fail

Any Text WCAG AAA × Fail

If you want to check with other color combinations, try the [Color Contrast Checker](#).

**YIQ 89.8060, 12.4700, 5.2860**

## **Background**



This preview shows how black text looks on a background with the YIQ color 89.8060, 12.4700, 5.2860.



This preview shows how white text looks on a background with the YIQ color 89.8060, 12.4700,



# Color Blindness Simulation

Color vision deficiency is a very complex topic, and I could not describe the different causes any better than Wikipedia does, so if you want to learn more, you should check out their [article about color blindness](#).

## Dichromacy



### Original Color

89.8060, 12.4700, 5.2860

### Protanopia

88.5980, 1.1920, 0.4240

### Deuteranopia

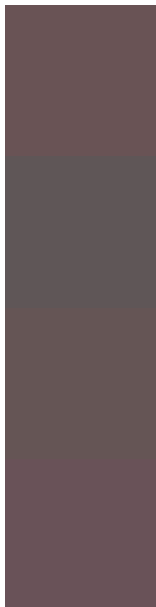
89.7730, 8.0690, 2.4450



## Tritanopia

89.6750, 11.4610, 7.0530

# Trichromacy



## Original Color

89.8060, 12.4700, 5.2860

## Protanomaly

88.8050, 5.0430, 2.2190

## Deuteranomaly

89.7840, 9.5360, 3.3920

## Tritanomaly

89.5610, 11.7820, 6.7420

# Monochromacy



## Original Color

89.8060, 12.4700, 5.2860

## Achromatopsia

90.0000, -0.0000, -0.0000

## Achromatomaly

89.5060, 4.4470, 2.0070

# CSS Examples

## Text

The CSS property to change the color of the text to YIQ 89.8060, 12.4700, 5.2860 is called "color". The color property can be set on classes, ids or directly on the HTML element.

This example shows how text in the color `rgb(105, 83, 85)` looks like.

```
.text, #text, p{  
    color:rgb(105, 83, 85)  
}
```

If you want to add a text shadow in that color use the text-shadow property, you can generate a text shadow directly with our [CSS Text Shadow Generator](#).

Here you see how black text with a 4 pixel rgb(105, 83, 85) colored shadow looks like.

```
.shadow{ text-shadow: 4px 4px 2px rgb(105, 83, 85) }
```

## Border

The CSS property to change the border of an element to YIQ 89.8060, 12.4700, 5.2860 is called "border". The border property can be set on classes, ids or directly on the HTML element.

This example shows the color as border, it can be applied via the CSS property "border" or "border-color".

```
.border, #border, table{ border:4px solid rgb(105, 83, 85) }
```



If only the border color should be changed use the property `border-color`.

```
.border{ border-color:rgb(105, 83, 85) }
```

If you want to add a box shadow in that color use:

Here you see how a box with a 4 pixel `rgb(105, 83, 85)` colored shadow looks like.

```
.boxshadow{ -moz-box-shadow:4px 4px 4px  
4px rgb(105, 83, 85); -webkit-box-  
shadow:4px 4px 4px 4px rgb(105, 83, 85);  
box-shadow:4px 4px 4px 4px rgb(105, 83,  
85) }
```

# Background

The CSS property to change the background color of an element to YIQ 89.8060, 12.4700, 5.2860 is called "background". The background property can be set on classes, ids or directly on the HTML element.

```
.background, #background, body{  
background: rgb(105, 83, 85) }
```

If only the background color should be changed can be used:

```
.background{ background-color: rgb(105, 83,  
85) }
```

This example shows the color as background, it is applied via the CSS property "background".

To optimize and compress your CSS code, you can use our [online CSS compressor and optimizer](#) based on csstidy. If you want to create a linear or radial gradient as background or border, check our [CSS Gradient Generator](#).

Hey! You found this booklet interesting? Support Converting Colors with the new Membership Option!

The pro membership hides all ads, plus gives you double the colors in the color bucket, and more awesome pro features!

**[Learn more, Memberships starting at \\$2.50/m!](#)**

**Follow me  
on Twitter!**

@ConvertingColor