

Converting Colors

YIQ(90.1760, 14.3040, 5.0880)

Have a look what the booklet for
YIQ(90.1760, 14.3040, 5.0880)
contains.

YIQ(90.1760, 14.3040, 5.0880)	3
<i>Conversions</i>	4
<i>Details</i>	6
<i>Harmonies</i>	12
<i>Previews</i>	24
<i>Color Blindness Simulation</i>	28
<i>CSS Examples</i>	31

Color

**YIQ(90.1760, 14.3040,
5.0880)**

Conversions

Conversions Part 1

Format	Color
Hex	6B5353
RGB	107, 83, 83
RGB Percent	42%, 33%, 33%
CMY	0.5803, 0.6745, 0.6745
CMYK	0.00, 0.22, 0.22, 0.58
HSL	360°, 13%, 37%
HSV	360°, 22%, 42%
XYZ	10.7195, 9.9364, 9.5395
YIQ	90.1760, 14.3040, 5.0880

Conversions

Conversions Part 2

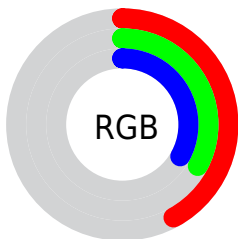
Format	Color
R_{YB}	107, 83, 83
Decimal	7033683
CIE Lab	37.73, 9.99, 3.81
CIE LCh	38, 10.688, 20.863
Yxy	9.9364, 0.3550, 0.3291
Android (android.graphics.Color)	4285223763 (0xFF6B5353)
YUV	90.1760, -3.5378, 14.7546
Hunter-Lab	31.5221, 5.5378, 4.1226

Details

The YIQ color **90.1760, 14.3040, 5.0880** is a dark color, and the websafe version is hex **666666**. A complement of this color would be **99.8240, -14.3040, -5.0880**, and the grayscale version is **90.0000, -0.0000, -0.0000**.

A 20% lighter version of the original color is **140.6600, 15.8170, 5.2010**, and **44.2790, 12.5160, 4.4520** is the 20% darker color. If you saturate the color by 10%, you get **82.4650, 20.8600, 7.4200**, and if you desaturate by 10%, it is **97.8870, 7.7480, 2.7560**.

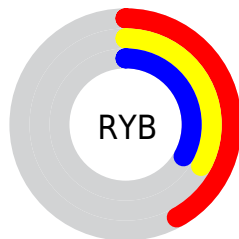
Distribution



Red (42%)

Green (33%)

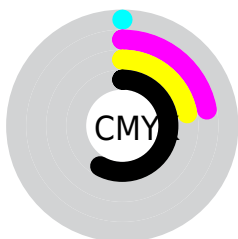
Blue (33%)



Red (42%)

Yellow (33%)

Blue (33%)

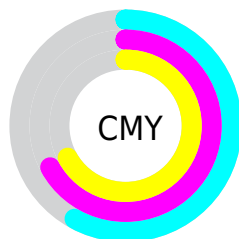


Cyan (0%)

Magenta (22%)

Yellow (22%)

Black (58%)



Cyan (58%)

Magenta (67%)

Yellow (67%)

Brightness & Saturation Gradients

These gradients show how the YIQ color 90.1760, 14.3040, 5.0880 changes by changing the brightness by 10 percent. The first figure shows a shift by +10% for each color and the second figure -10%.

Similar to the brightness gradients but the following saturation gradients show a change of the YIQ color 90.1760, 14.3040, 5.0880 by changing the saturation by 10% instead.

■ 90.1760, 14.3040,
5.0880

■ 90.1760, 14.3040,
5.0880

255.0000, -0.0000,
-0.0000

■ 66.5780, 13.1120,
4.6640

■ 140.6600, 15.8170,
5.2010

■ 44.2790, 12.5160,
4.4520

■ 167.0730, 16.0920,
5.7240

■ 23.6810, 11.3240,
4.0280

■ 194.2580, 17.0090,
5.6250

■ 0.2990, 0.5960,
0.2120

■ 221.6710, 17.2840,
6.1480

■ 0.0000, 0.0000,
0.0000

■ 245.7730, 8.0690,
2.4450

■ 90.1760, 14.3040,
5.0880

■ 90.1760, 14.3040,
5.0880

■ 82.4650, 20.8600,
7.4200

■ 97.8870, 7.7480,
2.7560

■ 75.4550, 26.8200,
9.5400

■ 104.8970, 1.7880,
0.6360

■ 67.7440, 33.3760,
11.8720

■ 112.6080, -4.7680,
-1.6960

■ 60.0330, 39.9320,
14.2040

■ 120.3190,
-11.3240, -4.0280

■ 52.4360, 46.1670,
16.8470

■ 127.9160,
-17.5590, -6.6710

■ 45.3120, 52.4480,
18.6560

■ 135.0400,
-23.8400, -8.4800

■ 37.6010, 59.0040,
20.9880

■ 142.7510,
-30.3960, -10.8120

■ 31.9930, 63.7720,

■ 150.4620,

22.6840

-36.9520, -13.1440

■ 157.4720,
-42.9120, -15.2640

Harmonies

Analogous

The Analogous color harmony consists of three colors that are next to each other on the color wheel.



90.6040, 10.2230, 7.4630



90.1760, 14.3040, 5.0880



89.9540, 14.8090, 1.4410

Triad

The Triadic color harmony groups three colors that are evenly spaced from another and form a triangle on the color wheel.



90.1760, 14.3040, 5.0880



86.5170, -3.2540, -7.1100



87.6380, -13.4800, 2.0080

Complementary

The Complementary color scheme is a pair of colors which are on the opposite of each other on the color wheel.



90.1760, 14.3040, 5.0880



99.8240, -14.3040, -5.0880

Split Complementary

Split-complementary colors differ from the complementary color scheme. The scheme consists of three colors, the original color and two neighbors of the complement color.



86.5510, -17.7890, -2.5010



90.1760, 14.3040, 5.0880



86.2110, -11.1400, -7.3640

Square

The Square scheme is like the rectangle color scheme, but the four colors are evenly spaced on the color wheel.



90.1760, 14.3040, 5.0880



87.7630, 4.8610, -5.4990



85.7420, -17.0090, -5.6250



89.0520, -5.7780, 5.5980

Rectangle

The Rectangle color scheme consists of four colors that form a rectangle on the color wheel.



90.1760, 14.3040, 5.0880



89.0030, 13.1130, -0.8630



85.7420, -17.0090, -5.6250



87.2140, -15.2220, 0.5380

Sweetspot

The Sweet Spot groups the original color and five complimentary colors.



90.1760, 14.3040, 5.0880



132.9900, 5.9600, 2.1200



92.9120, 6.6000, 12.5520



67.4950, 2.9800, 1.0600



199.0000, -0.0000, 0.0000



71.0000, -0.0000, -0.0000

Same Dimension

The Same Dimension uses a secret algorithm to generate beautiful new colors.



90.1760, 14.3040, 5.0880



113.3620, 22.6480, 8.0560



97.2200, 11.0040, -1.1880



49.7940, 3.5760, 1.2720



34.9830, 69.7320, 24.8040



73.2550, 146.0200, 51.9400

Inverse Universe

The Inverse Universe completely reimagines the original color for something new.



90.1760, 14.3040, 5.0880



113.3620, 22.6480, 8.0560



92.7800, -11.0040, 1.1880



49.7940, 3.5760, 1.2720



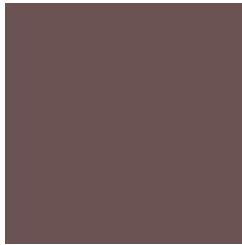
34.9830, 69.7320, 24.8040



73.2550, 146.0200, 51.9400

Previews

White Background



This preview shows how the YIQ color 90.1760, 14.3040, 5.0880 looks on a white background.

Color Contrast Check

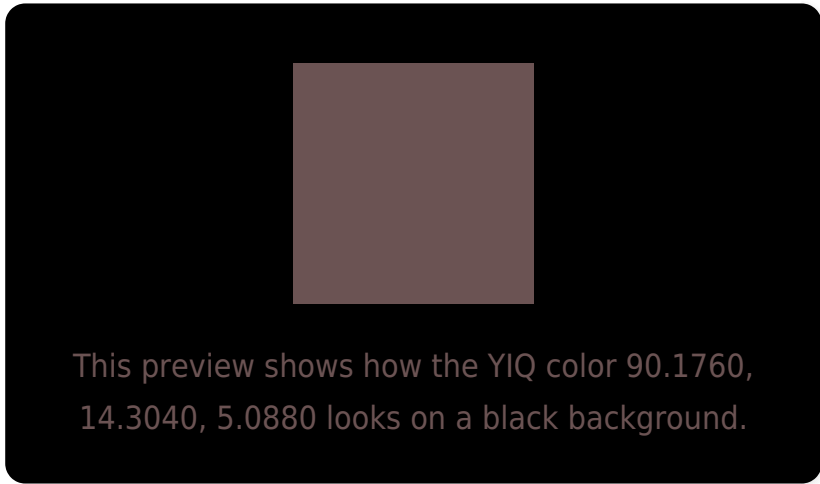
Large Text (above 18pt) WCAG AA ✓ Pass

Any Text WCAG AA ✓ Pass

Large Text (above 18pt) WCAG AAA ✓ Pass

Any Text WCAG AAA ✓ Pass

Black Background



Color Contrast Check

Large Text (above 18pt) WCAG AA × Fail

Any Text WCAG AA × Fail

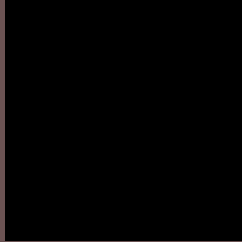
Large Text (above 18pt) WCAG AAA × Fail

Any Text WCAG AAA × Fail

If you want to check with other color combinations, try the [Color Contrast Checker](#).

YIQ 90.1760, 14.3040, 5.0880

Background



This preview shows how black text looks on a background with the YIQ color 90.1760, 14.3040, 5.0880.

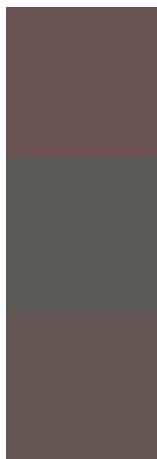


This preview shows how white text looks on a background with the YIQ color 90.1760, 14.3040,

Color Blindness Simulation

Color vision deficiency is a very complex topic, and I could not describe the different causes any better than Wikipedia does, so if you want to learn more, you should check out their [article about color blindness](#).

Dichromacy



Original Color

90.1760, 14.3040, 5.0880

Protanopia

89.2560, 2.1550, -0.5090

Deuteranopia

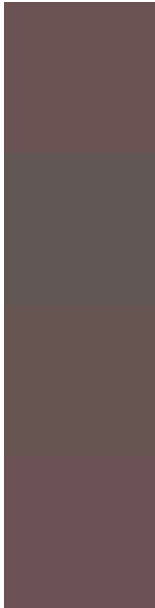
89.7300, 9.6280, 1.7240



Tritanopia

90.4580, 13.5700, 7.3780

Trichromacy



Original Color

90.1760, 14.3040, 5.0880

Protanomaly

89.7620, 6.6020, 1.4980

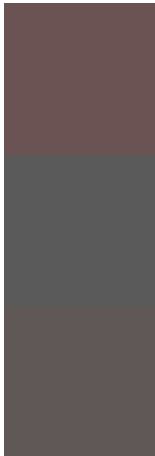
Deuteranomaly

90.0400, 11.6910, 2.8830

Tritanomaly

90.2300, 14.2120, 6.7560

Monochromacy



Original Color

90.1760, 14.3040, 5.0880

Achromatopsia

90.0000, -0.0000, -0.0000

Achromatomaly

89.6910, 5.3640, 1.9080

CSS Examples

Text

The CSS property to change the color of the text to YIQ 90.1760, 14.3040, 5.0880 is called "color". The color property can be set on classes, ids or directly on the HTML element.

This example shows how text in the color `rgb(107, 83, 83)` looks like.

```
.text, #text, p{  
    color:rgb(107, 83, 83)  
}
```

If you want to add a text shadow in that color use the text-shadow property, you can generate a text shadow directly with our [CSS Text Shadow Generator](#).

Here you see how black text with a 4 pixel rgb(107, 83, 83) colored shadow looks like.

```
.shadow{ text-shadow: 4px 4px 2px rgb(107, 83, 83) }
```

Border

The CSS property to change the border of an element to YIQ 90.1760, 14.3040, 5.0880 is called "border". The border property can be set on classes, ids or directly on the HTML element.

This example shows the color as border, it can be applied via the CSS property "border" or "border-color".

```
.border, #border, table{ border:4px solid rgb(107, 83, 83) }
```


If only the border color should be changed use the property border-color.

```
.border{ border-color:rgb(107, 83, 83) }
```

If you want to add a box shadow in that color use:

Here you see how a box with a 4 pixel rgb(107, 83, 83) colored shadow looks like.

```
.boxshadow{ -moz-box-shadow:4px 4px 4px  
4px rgb(107, 83, 83); -webkit-box-  
shadow:4px 4px 4px 4px rgb(107, 83, 83);  
box-shadow:4px 4px 4px 4px rgb(107, 83,  
83) }
```

Background

The CSS property to change the background color of an element to YIQ 90.1760, 14.3040, 5.0880 is called "background". The background property can be set on classes, ids or directly on the HTML element.

```
.background, #background, body{  
background: rgb(107, 83, 83) }
```

If only the background color should be changed can be used:

```
.background{ background-color: rgb(107, 83,  
83) }
```

This example shows the color as background, it is applied via the CSS property "background".

To optimize and compress your CSS code, you can use our [online CSS compressor and optimizer](#) based on csstidy. If you want to create a linear or radial gradient as background or border, check our [CSS Gradient Generator](#).

Hey! You found this booklet interesting? Support Converting Colors with the new Membership Option!

The pro membership hides all ads, plus gives you double the colors in the color bucket, and more awesome pro features!

[Learn more, Memberships starting at \\$2.50/m!](#)

**Follow me
on Twitter!**

@ConvertingColor