

Converting Colors

YIQ(90.1980, 17.2380, 6.9820)

Have a look what the booklet for
YIQ(90.1980, 17.2380, 6.9820)
contains.

YIQ(90.1980, 17.2380, 6.9820)	3
<i>Conversions</i>	4
<i>Details</i>	6
<i>Harmonies</i>	12
<i>Previews</i>	24
<i>Color Blindness Simulation</i>	28
<i>CSS Examples</i>	31

Color

**YIQ(90.1980, 17.2380,
6.9820)**

Conversions

Conversions Part 1

Format	Color
Hex	6F5153
RGB	111, 81, 83
RGB Percent	44%, 32%, 33%
CMY	0.5646, 0.6824, 0.6744
CMYK	0.00, 0.27, 0.25, 0.56
HSL	356°, 16%, 38%
HSV	356°, 27%, 44%
XYZ	11.0614, 9.8885, 9.5127
YIQ	90.1980, 17.2380, 6.9820

Conversions

Conversions Part 2

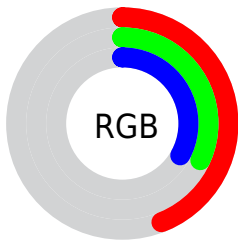
Format	Color
R_{YB}	111, 81, 83
Decimal	7295315
CIE Lab	37.64, 12.90, 3.74
CIE LCh	38, 13.432, 16.168
Yxy	9.8885, 0.3631, 0.3246
Android (android.graphics.Color)	4285485395 (0xFF6F5153)
YUV	90.1980, -3.5486, 18.2434
Hunter-Lab	31.4460, 7.7583, 4.0763

Details

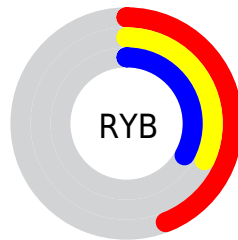
The YIQ color **90.1980, 17.2380, 6.9820** is a dark color, and the websafe version is hex **996666**. A complement of this color would be **101.8020, -17.2380, -6.9820**, and the grayscale version is **90.0000, -0.0000, -0.0000**.

A 20% lighter version of the original color is **140.0950, 19.0260, 7.6180**, and **44.0020, 14.8540, 6.1340** is the 20% darker color. If you saturate the color by 10%, you get **82.6010, 23.4730, 9.6250**, and if you desaturate by 10%, it is **97.7950, 11.0030, 4.3390**.

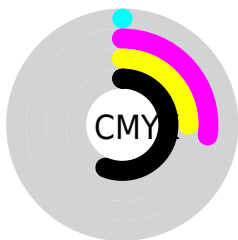
Distribution



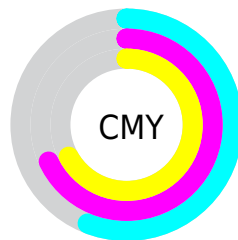
- Red (44%)
- Green (32%)
- Blue (33%)



- Red (44%)
- Yellow (32%)
- Blue (33%)



- Cyan (0%)
- Magenta (27%)
- Yellow (25%)
- Black (56%)



- Cyan (56%)
- Magenta (68%)
- Yellow (67%)

Brightness & Saturation Gradients

These gradients show how the YIQ color 90.1980, 17.2380, 6.9820 changes by changing the brightness by 10 percent. The first figure shows a shift by +10% for each color and the second figure -10%.

Similar to the brightness gradients but the following saturation gradients show a change of the YIQ color 90.1980, 17.2380, 6.9820 by changing the saturation by 10% instead.

90.1980, 17.2380,
6.9820

90.1980, 17.2380,
6.9820

255.0000, -0.0000,
-0.0000

66.6000, 16.0460,
6.5580

140.0950, 19.0260,
7.6180

44.0020, 14.8540,
6.1340

167.3940, 19.6220,
7.8300

23.4040, 13.6620,
5.7100

194.5790, 20.5390,
7.7310

2.0930, 4.1720,
1.4840

221.9920, 20.8140,
8.2540

0.0000, 0.0000,
0.0000

244.5990, 8.6190,
3.4910

90.1980, 17.2380,
6.9820

90.1980, 17.2380,
6.9820

82.6010, 23.4730,
9.6250

97.7950, 11.0030,
4.3390

74.8900, 30.0290,
11.9570

105.5060, 4.4470,
2.0070

67.2930, 36.2640,
14.6000

113.1030, -1.7880,
-0.6360

59.6960, 42.4990,
17.2430

120.7000, -8.0230,
-3.2790

51.3980, 49.3300,
20.0980

128.4110,
-14.5790, -5.6110

43.8010, 55.5650,
22.7410

136.5950,
-21.0890, -8.7770

36.2040, 61.8000,
25.3840

144.1920,
-27.3240, -11.4200

33.9870, 63.9090,

151.9030,

25.7090

-33.8800, -13.7520

■ 159.5000,
-40.1150, -16.3950

Harmonies

Analogous

The Analogous color harmony consists of three colors that are next to each other on the color wheel.



90.2560, 11.3230, 9.5550



90.1980, 17.2380, 6.9820



89.6340, 18.7060, 2.4020

Triad

The Triadic color harmony groups three colors that are evenly spaced from another and form a triangle on the color wheel.



90.1980, 17.2380, 6.9820



86.2350, -2.5200, -9.4000



86.4740, -18.8900, 0.9340

Complementary

The Complementary color scheme is a pair of colors which are on the opposite of each other on the color wheel.



90.1980, 17.2380, 6.9820



101.8020, -17.2380, -6.9820

Split Complementary

Split-complementary colors differ from the complementary color scheme. The scheme consists of three colors, the original color and two neighbors of the complement color.



84.9740, -23.4740, -4.0980



90.1980, 17.2380, 6.9820



84.6730, -12.5610, -9.1450

Square

The Square scheme is like the rectangle color scheme, but the four colors are evenly spaced on the color wheel.



90.1980, 17.2380, 6.9820



87.7910, 7.6580, -6.6300



84.1220, -21.1350, -7.9430



89.1980, -9.1250, 5.6830

Rectangle

The Rectangle color scheme consists of four colors that form a rectangle on the color wheel.



90.1980, 17.2380, 6.9820



88.8570, 16.4600, -0.9480



84.1220, -21.1350, -7.9430



85.7510, -21.2280, -0.7480

Sweetspot

The Sweet Spot groups the original color and five complimentary colors.



90.1980, 17.2380, 6.9820



137.4030, 6.2350, 2.6430



92.7920, 7.0580, 15.2660



69.0930, 4.1720, 1.4840



201.0000, -0.0000, 0.0000



74.0000, -0.0000, 0.0000

Same Dimension

The Same Dimension uses a secret algorithm to generate beautiful new colors.



90.1980, 17.2380, 6.9820



113.0960, 26.4530, 10.6850



97.6010, 14.3050, -0.4390



51.9080, 3.2550, 1.5830



36.7920, 68.9520, 27.9280



75.7910, 141.7550, 57.6510

Inverse Universe

The Inverse Universe completely reimagines the original color for something new.



90.1980, 17.2380, 6.9820



113.0960, 26.4530, 10.6850



94.9860, -14.5800, -0.0840



51.9080, 3.2550, 1.5830



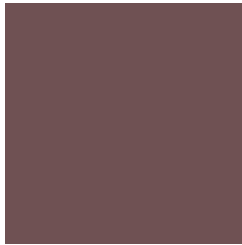
36.7920, 68.9520, 27.9280



75.7910, 141.7550, 57.6510

Previews

White Background



This preview shows how the YIQ color 90.1980, 17.2380, 6.9820 looks on a white background.

Color Contrast Check

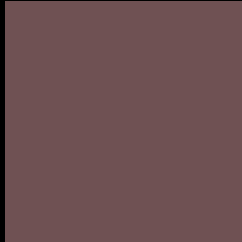
Large Text (above 18pt) WCAG AA ✓ Pass

Any Text WCAG AA ✓ Pass

Large Text (above 18pt) WCAG AAA ✓ Pass

Any Text WCAG AAA ✓ Pass

Black Background



This preview shows how the YIQ color 90.1980, 17.2380, 6.9820 looks on a black background.

Color Contrast Check

Large Text (above 18pt) WCAG AA × Fail

Any Text WCAG AA × Fail

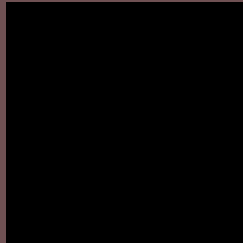
Large Text (above 18pt) WCAG AAA × Fail

Any Text WCAG AAA × Fail

If you want to check with other color combinations, try the [Color Contrast Checker](#).

YIQ 90.1980, 17.2380, 6.9820

Background



This preview shows how black text looks on a background with the YIQ color 90.1980, 17.2380, 6.9820.



This preview shows how white text looks on a background with the YIQ color 90.1980, 17.2380,

Color Blindness Simulation

Color vision deficiency is a very complex topic, and I could not describe the different causes any better than Wikipedia does, so if you want to learn more, you should check out their [article about color blindness](#).

Dichromacy



Original Color

90.1980, 17.2380, 6.9820

Protanopia

88.7830, 2.1090, 0.3250

Deuteranopia

89.7300, 9.6280, 1.7240



Tritanopia

90.0670, 16.2290, 8.7490

Trichromacy



Original Color

90.1980, 17.2380, 6.9820

Protanomaly

89.0010, 7.4270, 3.0670

Deuteranomaly

89.7520, 12.5620, 3.6180

Tritanomaly

89.9530, 16.5500, 8.4380

Monochromacy



Original Color

90.1980, 17.2380, 6.9820

Achromatopsia

90.0000, -0.0000, -0.0000

Achromatomaly

90.2890, 6.5560, 2.3320

CSS Examples

Text

The CSS property to change the color of the text to YIQ 90.1980, 17.2380, 6.9820 is called "color". The color property can be set on classes, ids or directly on the HTML element.

This example shows how text in the color `rgb(111, 81, 83)` looks like.

```
.text, #text, p{  
    color:rgb(111, 81, 83)  
}
```

If you want to add a text shadow in that color use the text-shadow property, you can generate a text shadow directly with our [CSS Text Shadow Generator](#).

Here you see how black text with a 4 pixel rgb(111, 81, 83) colored shadow looks like.

```
.shadow{ text-shadow: 4px 4px 2px rgb(111, 81, 83) }
```

Border

The CSS property to change the border of an element to YIQ 90.1980, 17.2380, 6.9820 is called "border". The border property can be set on classes, ids or directly on the HTML element.

This example shows the color as border, it can be applied via the CSS property "border" or "border-color".

```
.border, #border, table{ border:4px solid rgb(111, 81, 83) }
```


If only the border color should be changed use the property `border-color`.

```
.border{ border-color:rgb(111, 81, 83) }
```

If you want to add a box shadow in that color use:

Here you see how a box with a 4 pixel `rgb(111, 81, 83)` colored shadow looks like.

```
.boxshadow{ -moz-box-shadow:4px 4px 4px  
4px rgb(111, 81, 83); -webkit-box-  
shadow:4px 4px 4px 4px rgb(111, 81, 83);  
box-shadow:4px 4px 4px 4px rgb(111, 81,  
83) }
```

Background

The CSS property to change the background color of an element to YIQ 90.1980, 17.2380, 6.9820 is called "background". The background property can be set on classes, ids or directly on the HTML element.

```
.background, #background, body{  
background: rgb(111, 81, 83) }
```

If only the background color should be changed can be used:

```
.background{ background-color: rgb(111, 81,  
83) }
```

This example shows the color as background, it is applied via the CSS property "background".

To optimize and compress your CSS code, you can use our [online CSS compressor and optimizer](#) based on csstidy. If you want to create a linear or radial gradient as background or border, check our [CSS Gradient Generator](#).

Hey! You found this booklet interesting? Support Converting Colors with the new Membership Option!

The pro membership hides all ads, plus gives you double the colors in the color bucket, and more awesome pro features!

[Learn more, Memberships starting at \\$2.50/m!](#)

**Follow me
on Twitter!**

@ConvertingColor