

Converting Colors

YIQ(90.3200, 22.4660, 0.3380)

Have a look what the booklet for
YIQ(90.3200, 22.4660, 0.3380)
contains.

YIQ(90.3200, 22.4660, 0.3380)	3
<i>Conversions</i>	4
<i>Details</i>	6
<i>Harmonies</i>	12
<i>Previews</i>	24
<i>Color Blindness Simulation</i>	28
<i>CSS Examples</i>	31

Color

**YIQ(90.3200, 22.4660,
0.3380)**

Conversions

Conversions Part 1

Format	Color
Hex	705442
RGB	112, 84, 66
RGB Percent	44%, 33%, 26%
CMY	0.5607, 0.6706, 0.7411
CMYK	0.00, 0.25, 0.41, 0.56
HSL	23°, 26%, 35%
HSV	23°, 41%, 44%
XYZ	10.8374, 10.1781, 6.5517
YIQ	90.3200, 22.4660, 0.3380

Conversions

Conversions Part 2

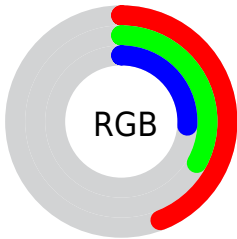
Format	Color
R_{YB}	112, 96, 66
Decimal	7361602
CIE _{Lab}	38.16, 9.01, 15.01
CIE _{LCh}	38, 17.503, 59.031
Yxy	10.1781, 0.3931, 0.3692
Android (android.graphics.Color)	4285551682 (0xFF705442)
YUV	90.3200, -11.9898, 19.0134
Hunter-Lab	31.9032, 4.8054, 10.1563

Details

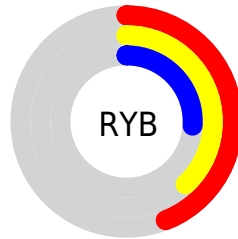
The YIQ color **90.3200, 22.4660, 0.3380** is a dark color, and the websafe version is hex **996666**. A complement of this color would be **87.6800, -22.4660, -0.3380**, and the grayscale version is **90.0000, -0.0000, -0.0000**.

A 20% lighter version of the original color is **140.9890, 24.8960, 0.3520**, and **44.3520, 19.4400, 0.1120** is the 20% darker color. If you saturate the color by 10%, you get **84.9570, 27.9220, 0.5780**, and if you desaturate by 10%, it is **95.6830, 17.0100, 0.0980**.

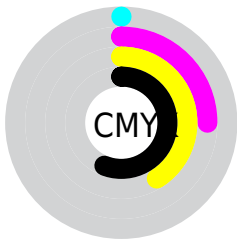
Distribution



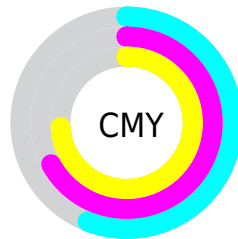
- Red (44%)
- Green (33%)
- Blue (26%)



- Red (44%)
- Yellow (38%)
- Blue (26%)



- Cyan (0%)
- Magenta (25%)
- Yellow (41%)
- Black (56%)



- Cyan (56%)
- Magenta (67%)
- Yellow (74%)

Brightness & Saturation Gradients

These gradients show how the YIQ color 90.3200, 22.4660, 0.3380 changes by changing the brightness by 10 percent. The first figure shows a shift by +10% for each color and the second figure -10%.

Similar to the brightness gradients but the following saturation gradients show a change of the YIQ color 90.3200, 22.4660, 0.3380 by changing the saturation by 10% instead.

90.3200, 22.4660,
0.3380

90.3200, 22.4660,
0.3380

255.0000, -0.0000,
-0.0000

66.8360, 20.9530,
0.2250

140.9890, 24.8960,
0.3520

44.3520, 19.4400,
0.1120

167.2880, 25.4920,
0.5640

22.8250, 19.4860,
-0.7220

194.7720, 27.0050,
0.6770

0.8970, 1.7880,
0.6360

222.0710, 27.6010,
0.8890

0.0000, 0.0000,
0.0000

244.0800, 14.2140,
-4.2980

254.4300, 1.6050,

-1.5550

■ 90.3200, 22.4660,
0.3380

■ 90.3200, 22.4660,
0.3380

■ 84.9570, 27.9220,
0.5780

■ 95.6830, 17.0100,
0.0980

■ 79.5940, 33.3780,
0.8180

■ 101.0460, 11.5540,
-0.1420

■ 74.7040, 38.8800,
0.2240

■ 105.9360, 6.0520,
0.4520

■ 69.3410, 44.3360,
0.4640

■ 111.2990, 0.5960,
0.2120

■ 63.9780, 49.7920,
0.7040

■ 116.6620, -4.8600,
-0.0280

■ 59.3160, 54.6520,
0.7320

■ 122.0250,
-10.3160, -0.2680

■ 127.3880,
-15.7720, -0.5080

■ 132.8650,
-21.5490, -0.4370

■ 137.6410,
-26.7300, -0.1540

Harmonies

Analogous

The Analogous color harmony consists of three colors that are next to each other on the color wheel.



91.0200, 23.6110, 7.1230



90.3200, 22.4660, 0.3380



89.2110, 15.2230, -6.0650

Triad

The Triadic color harmony groups three colors that are evenly spaced from another and form a triangle on the color wheel.



90.3200, 22.4660, 0.3380



83.8180, -23.3350, -12.1270



90.8010, -6.3290, 10.0790

Complementary

The Complementary color scheme is a pair of colors which are on the opposite of each other on the color wheel.



90.3200, 22.4660, 0.3380



87.6800, -22.4660, -0.3380

Split Complementary

Split-complementary colors differ from the complementary color scheme. The scheme consists of three colors, the original color and two neighbors of the complement color.



88.0980, -20.5870, 4.1570



90.3200, 22.4660, 0.3380



82.4350, -32.3220, -8.9460

Square

The Square scheme is like the rectangle color scheme, but the four colors are evenly spaced on the color wheel.



90.3200, 22.4660, 0.3380



85.5330, -9.3510, -12.2550



84.6080, -31.1310, -2.9950



92.3960, 8.1130, 12.6650

Rectangle

The Rectangle color scheme consists of four colors that form a rectangle on the color wheel.



90.3200, 22.4660, 0.3380



88.3950, 8.7130, -9.2310



84.6080, -31.1310, -2.9950



90.2950, -10.7760, 8.0720

Sweetspot

The Sweet Spot groups the original color and five complimentary colors.



90.3200, 22.4660, 0.3380



137.1920, 8.2070, -0.0570



82.9460, 18.4280, 18.4600



69.3380, 4.8600, 0.0280



201.0000, -0.0000, 0.0000



74.0000, -0.0000, 0.0000

Same Dimension

The Same Dimension uses a secret algorithm to generate beautiful new colors.



90.3200, 22.4660, 0.3380



111.6650, 34.6160, 0.4080



103.8210, 16.1410, -11.6910



53.5550, 2.7510, -0.2970



63.4690, 58.5950, 0.8590



130.7920, 120.5370, 1.6330

Inverse Universe

The Inverse Universe completely reimagines the original color for something new.



87.6800, -22.4660, -0.3380



107.9220, -34.8910, -0.9310



74.1790, -16.1410, 11.6910



53.0320, -3.0260, -0.2260



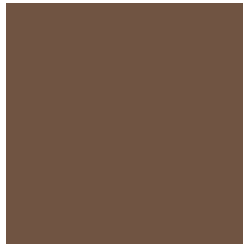
56.5310, -58.5950, -0.8590



116.7950, -120.8120, -2.1560

Previews

White Background



This preview shows how the YIQ color 90.3200, 22.4660, 0.3380 looks on a white background.

Color Contrast Check

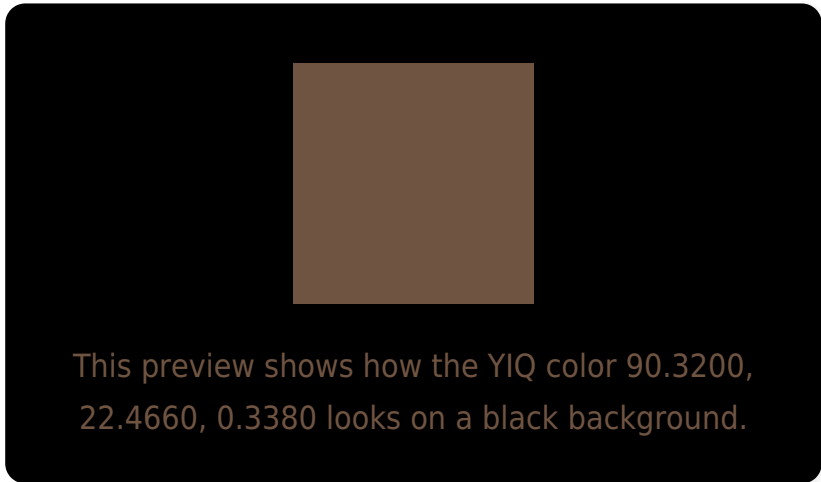
Large Text (above 18pt) WCAG AA ✓ Pass

Any Text WCAG AA ✓ Pass

Large Text (above 18pt) WCAG AAA ✓ Pass

Any Text WCAG AAA × Fail

Black Background



Color Contrast Check

Large Text (above 18pt) WCAG AA ✓ Pass

Any Text WCAG AA × Fail

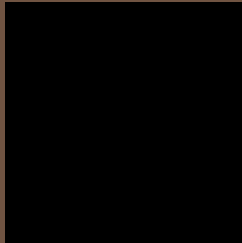
Large Text (above 18pt) WCAG AAA × Fail

Any Text WCAG AAA × Fail

If you want to check with other color combinations, try the [Color Contrast Checker](#).

YIQ 90.3200, 22.4660, 0.3380

Background



This preview shows how black text looks on a background with the YIQ color 90.3200, 22.4660, 0.3380.



This preview shows how white text looks on a background with the YIQ color 90.3200, 22.4660,

0.3380.

Color Blindness Simulation

Color vision deficiency is a very complex topic, and I could not describe the different causes any better than Wikipedia does, so if you want to learn more, you should check out their [article about color blindness](#).

Dichromacy



Original Color

90.3200, 22.4660, 0.3380

Protanopia

89.4000, 10.3170, -5.2590

Deuteranopia

89.9990, 18.9360, -1.7680



Tritanopia

91.5510, 17.7420, 8.8620

Trichromacy



Original Color

90.3200, 22.4660, 0.3380

Protanomaly

89.9060, 14.7640, -3.2520

Deuteranomaly

90.0100, 20.4030, -0.8210

Tritanomaly

90.9270, 19.4390, 5.6390

Monochromacy



Original Color

90.3200, 22.4660, 0.3380

Achromatopsia

90.0000, -0.0000, -0.0000

Achromatomaly

90.1920, 8.2070, -0.0570

CSS Examples

Text

The CSS property to change the color of the text to YIQ 90.3200, 22.4660, 0.3380 is called "color". The color property can be set on classes, ids or directly on the HTML element.

This example shows how text in the color `rgb(112, 84, 66)` looks like.

```
.text, #text, p{  
    color:rgb(112, 84, 66)  
}
```

If you want to add a text shadow in that color use the text-shadow property, you can generate a text shadow directly with our [CSS Text Shadow Generator](#).

Here you see how black text with a 4 pixel rgb(112, 84, 66) colored shadow looks like.

```
.shadow{ text-shadow: 4px 4px 2px rgb(112, 84, 66) }
```

Border

The CSS property to change the border of an element to YIQ 90.3200, 22.4660, 0.3380 is called "border". The border property can be set on classes, ids or directly on the HTML element.

This example shows the color as border, it can be applied via the CSS property "border" or "border-color".

```
.border, #border, table{ border:4px solid rgb(112, 84, 66) }
```


If only the border color should be changed use the property `border-color`.

```
.border{ border-color:rgb(112, 84, 66) }
```

If you want to add a box shadow in that color use:

Here you see how a box with a 4 pixel `rgb(112, 84, 66)` colored shadow looks like.

```
.boxshadow{ -moz-box-shadow:4px 4px 4px  
4px rgb(112, 84, 66); -webkit-box-  
shadow:4px 4px 4px 4px rgb(112, 84, 66);  
box-shadow:4px 4px 4px 4px rgb(112, 84,  
66) }
```

Background

The CSS property to change the background color of an element to YIQ 90.3200, 22.4660, 0.3380 is called "background". The background property can be set on classes, ids or directly on the HTML element.

```
.background, #background, body{  
background: rgb(112, 84, 66) }
```

If only the background color should be changed can be used:

```
.background{ background-color: rgb(112, 84,  
66) }
```

This example shows the color as background, it is applied via the CSS property "background".

To optimize and compress your CSS code, you can use our [online CSS compressor and optimizer](#) based on csstidy. If you want to create a linear or radial gradient as background or border, check our [CSS Gradient Generator](#).

Hey! You found this booklet interesting? Support Converting Colors with the new Membership Option!

The pro membership hides all ads, plus gives you double the colors in the color bucket, and more awesome pro features!

[Learn more, Memberships starting at \\$2.50/m!](#)

**Follow me
on Twitter!**

@ConvertingColor