

Converting Colors

YIQ(91.7960, 18.4300, 7.4060)

Have a look what the booklet for
YIQ(91.7960, 18.4300, 7.4060)
contains.

YIQ(91.7960, 18.4300, 7.4060)	3
<i>Conversions</i>	4
<i>Details</i>	6
<i>Harmonies</i>	12
<i>Previews</i>	24
<i>Color Blindness Simulation</i>	28
<i>CSS Examples</i>	31

Color

**YIQ(91.7960, 18.4300,
7.4060)**

Conversions

Conversions Part 1

Format	Color
Hex	725254
RGB	114, 82, 84
RGB Percent	45%, 32%, 33%
CMY	0.5529, 0.6785, 0.6705
CMYK	0.00, 0.28, 0.26, 0.55
HSL	356°, 16%, 38%
HSV	356°, 28%, 45%
XYZ	11.5592, 10.2517, 9.7608
YIQ	91.7960, 18.4300, 7.4060

Conversions

Conversions Part 2

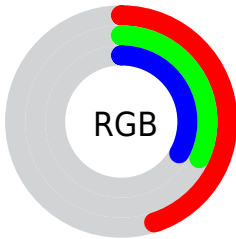
Format	Color
R_{YB}	114, 82, 84
Decimal	7492180
CIE _{Lab}	38.29, 13.71, 4.09
CIE _{LCh}	38, 14.311, 16.623
Yxy	10.2517, 0.3661, 0.3247
Android (android.graphics.Color)	4285682260 (0xFF725254)
YUV	91.7960, -3.8434, 19.4729
Hunter-Lab	32.0182, 8.4102, 4.3381

Details

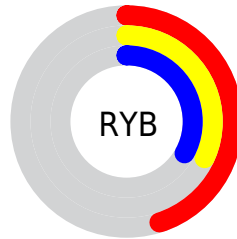
The YIQ color **91.7960, 18.4300, 7.4060** is a dark color, and the websafe version is hex **996666**. A complement of this color would be **104.2040, -18.4300, -7.4060**, and the grayscale version is **92.0000, 0.0000, -0.0000**.

A 20% lighter version of the original color is **142.5790, 20.5390, 7.7310**, and **45.6000, 16.0460, 6.5580** is the 20% darker color. If you saturate the color by 10%, you get **84.0850, 24.9860, 9.7380**, and if you desaturate by 10%, it is **99.5070, 11.8740, 5.0740**.

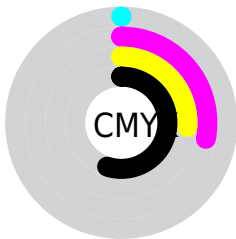
Distribution



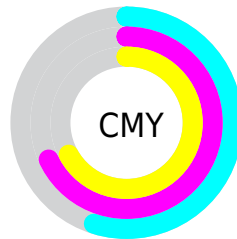
- Red (45%)
- Green (32%)
- Blue (33%)



- Red (45%)
- Yellow (32%)
- Blue (33%)



- Cyan (0%)
- Magenta (28%)
- Yellow (26%)
- Black (55%)



- Cyan (55%)
- Magenta (68%)
- Yellow (67%)

Brightness & Saturation Gradients

These gradients show how the YIQ color 91.7960, 18.4300, 7.4060 changes by changing the brightness by 10 percent. The first figure shows a shift by +10% for each color and the second figure -10%.

Similar to the brightness gradients but the following saturation gradients show a change of the YIQ color 91.7960, 18.4300, 7.4060 by changing the saturation by 10% instead.

■ 91.7960, 18.4300,
7.4060

■ 91.7960, 18.4300,
7.4060

■ 255.0000, -0.0000,
-0.0000

■ 68.1980, 17.2380,
6.9820

■ 142.5790, 20.5390,
7.7310

■ 45.6000, 16.0460,
6.5580

■ 168.9920, 20.8140,
8.2540

■ 24.1160, 14.5330,
6.4450

■ 196.2910, 21.4100,
8.4660

■ 4.7840, 9.5360,
3.3920

■ 223.8890, 22.6020,
8.8900

■ 0.0000, 0.0000,
0.0000

■ 245.4140, 7.7020,
3.5900

■ 91.7960, 18.4300,
7.4060

■ 91.7960, 18.4300,
7.4060

■ 84.0850, 24.9860,
9.7380

■ 99.5070, 11.8740,
5.0740

■ 75.9010, 31.4960,
12.9040

■ 107.6910, 5.3640,
1.9080

■ 68.1900, 38.0520,
15.2360

■ 115.4020, -1.1920,
-0.4240

■ 59.8920, 44.8830,
18.0910

■ 123.7000, -8.0230,
-3.2790

■ 52.2950, 51.1180,
20.7340

■ 131.2970,
-14.2580, -5.9220

■ 44.5840, 57.6740,
23.0660

■ 139.0080,
-20.8140, -8.2540

■ 36.2860, 64.5050,
25.9210

■ 147.3060,
-27.6450, -11.1090

■ 34.8840, 65.6970,

■ 154.9030,

26.3450

-33.8800, -13.7520

■ 163.2010,
-40.7110, -16.6070

Harmonies

Analogous

The Analogous color harmony consists of three colors that are next to each other on the color wheel.



91.9680, 12.1940, 10.2900



91.7960, 18.4300, 7.4060



91.2320, 19.8980, 2.8260

Triad

The Triadic color harmony groups three colors that are evenly spaced from another and form a triangle on the color wheel.



91.7960, 18.4300, 7.4060



87.8220, -2.7950, -9.9230



88.2890, -19.8070, 1.0330

Complementary

The Complementary color scheme is a pair of colors which are on the opposite of each other on the color wheel.



91.7960, 18.4300, 7.4060



104.2040, -18.4300, -7.4060

Split Complementary

Split-complementary colors differ from the complementary color scheme. The scheme consists of three colors, the original color and two neighbors of the complement color.



85.6040, -25.3080, -3.9000



91.7960, 18.4300, 7.4060



85.6620, -14.0280, -10.0920

Square

The Square scheme is like the rectangle color scheme, but the four colors are evenly spaced on the color wheel.



91.7960, 18.4300, 7.4060



88.6770, 7.9790, -6.9410



85.2250, -22.9230, -8.5790



90.4260, -9.7670, 6.3050

Rectangle

The Rectangle color scheme consists of four colors that form a rectangle on the color wheel.



91.7960, 18.4300, 7.4060



90.3410, 17.9730, -0.8350



85.2250, -22.9230, -8.5790



87.2670, -22.7410, -0.8610

Sweetspot

The Sweet Spot groups the original color and five complimentary colors.



91.7960, 18.4300, 7.4060



139.7020, 6.8310, 2.8550



94.6180, 7.6080, 16.3120



69.0930, 4.1720, 1.4840



201.0000, -0.0000, 0.0000



74.0000, -0.0000, 0.0000

Same Dimension

The Same Dimension uses a secret algorithm to generate beautiful new colors.



91.7960, 18.4300, 7.4060



113.2920, 28.8370, 11.5330



99.7860, 15.2220, -0.5380



51.9080, 3.2550, 1.5830



36.7920, 68.9520, 27.9280



75.6770, 142.0760, 57.3400

Inverse Universe

The Inverse Universe completely reimagines the original color for something new.



91.7960, 18.4300, 7.4060



113.2920, 28.8370, 11.5330



96.2140, -15.2220, 0.5380



51.9080, 3.2550, 1.5830



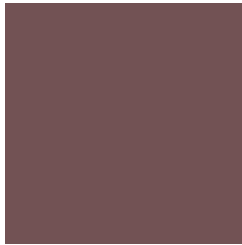
36.7920, 68.9520, 27.9280



75.6770, 142.0760, 57.3400

Previews

White Background



This preview shows how the YIQ color 91.7960, 18.4300, 7.4060 looks on a white background.

Color Contrast Check

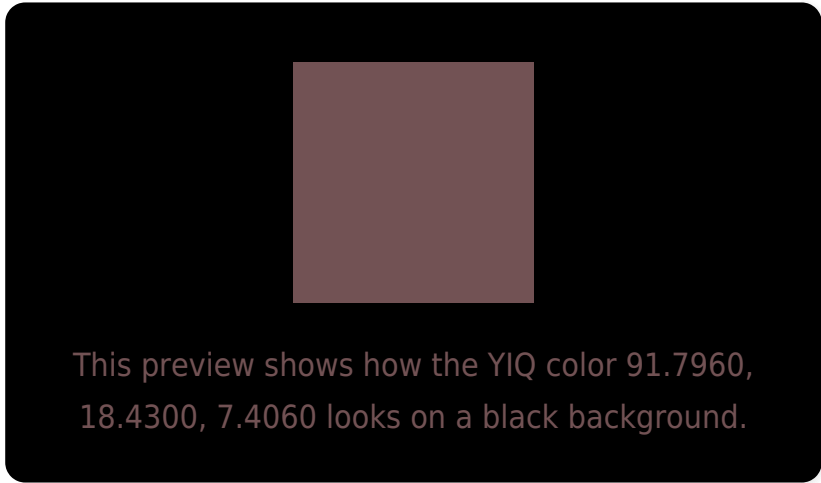
Large Text (above 18pt) WCAG AA ✓ Pass

Any Text WCAG AA ✓ Pass

Large Text (above 18pt) WCAG AAA ✓ Pass

Any Text WCAG AAA × Fail

Black Background



Color Contrast Check

Large Text (above 18pt) WCAG AA ✓ Pass

Any Text WCAG AA × Fail

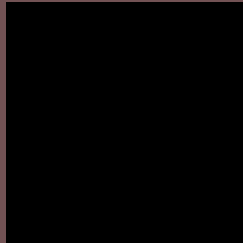
Large Text (above 18pt) WCAG AAA × Fail

Any Text WCAG AAA × Fail

If you want to check with other color combinations, try the [Color Contrast Checker](#).

YIQ 91.7960, 18.4300, 7.4060

Background



This preview shows how black text looks on a background with the YIQ color 91.7960, 18.4300, 7.4060.

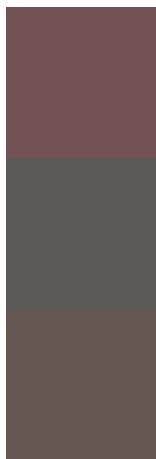


This preview shows how white text looks on a background with the YIQ color 91.7960, 18.4300,

Color Blindness Simulation

Color vision deficiency is a very complex topic, and I could not describe the different causes any better than Wikipedia does, so if you want to learn more, you should check out their [article about color blindness](#).

Dichromacy



Original Color

91.7960, 18.4300, 7.4060

Protanopia

90.3700, 1.8340, -0.1980

Deuteranopia

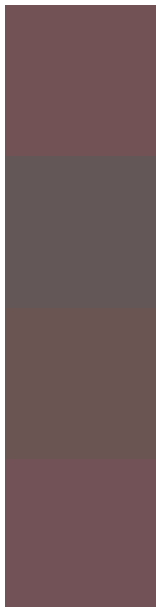
91.0290, 10.2240, 1.9360



Tritanopia

91.6650, 17.4210, 9.1730

Trichromacy



Original Color

91.7960, 18.4300, 7.4060

Protanomaly

90.8870, 7.7480, 2.7560

Deuteranomaly

91.0510, 13.1580, 3.8300

Tritanomaly

91.5510, 17.7420, 8.8620

Monochromacy



Original Color

91.7960, 18.4300, 7.4060

Achromatopsia

92.0000, 0.0000, -0.0000

Achromatomaly

91.7020, 6.8310, 2.8550

CSS Examples

Text

The CSS property to change the color of the text to YIQ 91.7960, 18.4300, 7.4060 is called "color". The color property can be set on classes, ids or directly on the HTML element.

This example shows how text in the color `rgb(114, 82, 84)` looks like.

```
.text, #text, p{  
    color:rgb(114, 82, 84)  
}
```

If you want to add a text shadow in that color use the text-shadow property, you can generate a text shadow directly with our [CSS Text Shadow Generator](#).

Here you see how black text with a 4 pixel rgb(114, 82, 84) colored shadow looks like.

```
.shadow{ text-shadow: 4px 4px 2px rgb(114, 82, 84) }
```

Border

The CSS property to change the border of an element to YIQ 91.7960, 18.4300, 7.4060 is called "border". The border property can be set on classes, ids or directly on the HTML element.

This example shows the color as border, it can be applied via the CSS property "border" or "border-color".

```
.border, #border, table{ border:4px solid rgb(114, 82, 84) }
```


If only the border color should be changed use the property `border-color`.

```
.border{ border-color:rgb(114, 82, 84) }
```

If you want to add a box shadow in that color use:

Here you see how a box with a 4 pixel `rgb(114, 82, 84)` colored shadow looks like.

```
.boxshadow{ -moz-box-shadow:4px 4px 4px  
4px rgb(114, 82, 84); -webkit-box-  
shadow:4px 4px 4px 4px rgb(114, 82, 84);  
box-shadow:4px 4px 4px 4px rgb(114, 82,  
84) }
```

Background

The CSS property to change the background color of an element to YIQ 91.7960, 18.4300, 7.4060 is called "background". The background property can be set on classes, ids or directly on the HTML element.

```
.background, #background, body{  
background: rgb(114, 82, 84) }
```

If only the background color should be changed can be used:

```
.background{ background-color: rgb(114, 82,  
84) }
```

This example shows the color as background, it is applied via the CSS property "background".

To optimize and compress your CSS code, you can use our [online CSS compressor and optimizer](#) based on csstidy. If you want to create a linear or radial gradient as background or border, check our [CSS Gradient Generator](#).

Hey! You found this booklet interesting? Support Converting Colors with the new Membership Option!

The pro membership hides all ads, plus gives you double the colors in the color bucket, and more awesome pro features!

[Learn more, Memberships starting at \\$2.50/m!](#)

**Follow me
on Twitter!**

@ConvertingColor