

Converting Colors

YUV(100.4930, -0.2430,
124.9786)

Have a look what the booklet for
YUV(100.4930, -0.2430, 124.9786)
contains.

YUV(100.4930, -0.2430, 124.9786)	3
<i>Conversions</i>	4
<i>Details</i>	6
<i>Harmonies</i>	12
<i>Previews</i>	24
<i>Color Blindness Simulation</i>	28
<i>CSS Examples</i>	31

Color

**YUV(100.4930, -0.2430,
124.9786)**

Conversions

Conversions Part 1

Format	Color
Hex	F31C64
RGB	243, 28, 100
RGB Percent	95%, 11%, 39%
CMY	0.0471, 0.8902, 0.6078
CMYK	0.00, 0.88, 0.59, 0.05
HSL	340°, 90%, 53%
HSV	340°, 88%, 95%
XYZ	39.6777, 20.8053, 13.9812
YIQ	100.4930, 105.0280, 67.9720

Conversions

Conversions Part 2

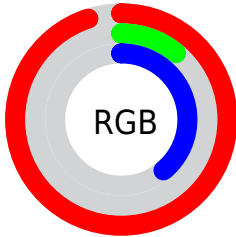
Format	Color
R_{YB}	243, 28, 100
Decimal	15932516
CIE Lab	52.74, 77.41, 17.61
CIE LCh	53, 79.388, 12.816
Yxy	20.8053, 0.5328, 0.2794
Android (android.graphics.Color)	4294122596 (0xFFFF31C64)
YUV	100.4930, -0.2430, 124.9786
Hunter-Lab	45.6128, 75.4510, 13.7555

Details

The YUV color **100.4930, -0.2430, 124.9786** is a dark color, and the websafe version is hex **FF0066**. The color can be described as dark washed rose. A complement of this color would be **170.5070, 0.2430, -124.9786**, and the grayscale version is **100.0000, 0.0000, 0.0000**.

A 20% lighter version of the original color is **154.3930, -2.1657, 88.2323**, and **59.6770, -2.7988, 104.6463** is the 20% darker color. If you saturate the color by 10%, you get **84.5810, -0.2864, 138.9335**, and if you desaturate by 10%, it is **116.4050, -0.1997, 111.0238**.

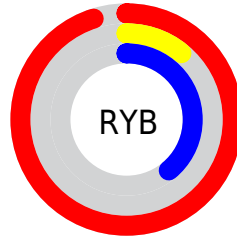
Distribution



Red (95%)

Green (11%)

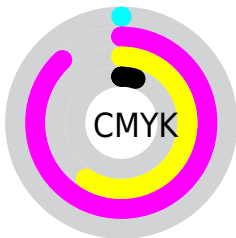
Blue (39%)



Red (95%)

Yellow (11%)

Blue (39%)

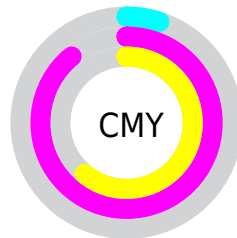


Cyan (0%)

Magenta (88%)

Yellow (59%)

Black (5%)



Cyan (5%)

Magenta (89%)

Yellow (61%)

Brightness & Saturation Gradients

These gradients show how the YUV color 100.4930, -0.2430, 124.9786 changes by changing the brightness by 10 percent. The first figure shows a shift by +10% for each color and the second figure -10%.

Similar to the brightness gradients but the following saturation gradients show a change of the YUV color 100.4930, -0.2430, 124.9786 by changing the saturation by 10% instead.

100.4930, -0.2430,
124.9786

100.4930, -0.2430,
124.9786

255.0000, 0.0000,
0.0000

71.7530, 2.0938,
122.1196

154.3930, -2.1657,
88.2323

59.6770, -2.7988,
104.6463

175.0810, 0.9461,
70.0890

48.1280, -6.9651,
87.5877

195.7690, 4.0579,
51.9456

36.0520, -11.8576,
70.1144

216.5710, 7.6065,
33.7022

26.0560, -11.3666,
52.5709

237.3900, 8.6817,
15.4440

16.3740, -7.0864,
32.9980

2.3920, -1.1793,

4.9182

■ 0.0000, 0.0000,
0.0000

■ 100.4930, -0.2430,
124.9786

■ 100.4930, -0.2430,
124.9786

■ 84.5810, -0.2864,
138.9335

■ 116.4050, -0.1997,
111.0238

■ 81.8910, -0.4393,
141.2926

■ 132.9040, -0.4457,
96.5542

■ 148.8160, -0.4023,
82.5994

■ 164.8420, 0.0779,
68.5446

■ 180.7540, 0.1213,
54.5897

■ 197.2530, -0.1247,
40.1201

■ 213.1650, -0.0813,
26.1653

■ 229.0770, -0.0380,
12.2105

■ 245.5760, -0.2840,
-2.2592

Harmonies

Analogous

The Analogous color harmony consists of three colors that are next to each other on the color wheel.



113.4290, 26.9035, 97.8478



100.4930, -0.2430, 124.9786



113.0130, -39.4464, 99.0896

Triad

The Triadic color harmony groups three colors that are evenly spaced from another and form a triangle on the color wheel.



100.4930, -0.2430, 124.9786



95.8680, -47.2629, -54.2582



114.1850, 69.4218, -100.1402

Complementary

The Complementary color scheme is a pair of colors which are on the opposite of each other on the color wheel.



100.4930, -0.2430, 124.9786



170.5070, 0.2430, -124.9786

Split Complementary

Split-complementary colors differ from the complementary color scheme. The scheme consists of three colors, the original color and two neighbors of the complement color.



114.6630, 50.9451, -100.5595



100.4930, -0.2430, 124.9786



98.6860, -7.7332, -86.5476

Square

The Square scheme is like the rectangle color scheme, but the four colors are evenly spaced on the color wheel.



100.4930, -0.2430, 124.9786



115.1580, -56.7729, 9.5084



108.5410, 22.4113, -95.1905



102.4450, 75.2096, -89.8443

Rectangle

The Rectangle color scheme consists of four colors that form a rectangle on the color wheel.



100.4930, -0.2430, 124.9786



116.7390, -57.5523, 73.0199



108.5410, 22.4113, -95.1905



115.7350, 65.2066, -101.4996

Sweetspot

The Sweet Spot groups the original color and five complimentary colors.



100.4930, -0.2430, 124.9786



209.2530, -0.1247, 40.1201



94.3700, 73.2746, 64.5735



100.7410, -0.3653, 23.9061



0.0000, 0.0000, 0.0000



128.0000, 0.0000, 0.0000

Same Dimension

The Same Dimension uses a secret algorithm to generate beautiful new colors.



100.4930, -0.2430, 124.9786



85.9350, -0.4610, 148.2700



111.0690, -40.9530, 115.7035



114.0440, -0.0217, 6.9774



62.6820, -0.3362, 108.1499



19.9210, 0.0389, 34.2723

Inverse Universe

The Inverse Universe completely reimagines the original color for something new.



100.4930, -0.2430, 124.9786



85.9350, -0.4610, 148.2700



159.9310, 40.9530, -115.7035



114.0440, -0.0217, 6.9774



62.6820, -0.3362, 108.1499



19.9210, 0.0389, 34.2723

Previews

White Background



This preview shows how the YUV color 100.4930, -0.2430, 124.9786 looks on a white background.

Color Contrast Check

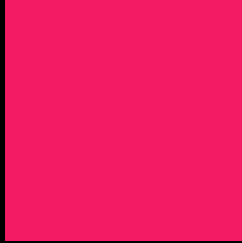
Large Text (above 18pt) WCAG AA ✓ Pass

Any Text WCAG AA × Fail

Large Text (above 18pt) WCAG AAA × Fail

Any Text WCAG AAA × Fail

Black Background



This preview shows how the YUV color 100.4930, -0.2430, 124.9786 looks on a black background.

Color Contrast Check

Large Text (above 18pt) WCAG AA ✓ Pass

Any Text WCAG AA ✓ Pass

Large Text (above 18pt) WCAG AAA ✓ Pass

Any Text WCAG AAA × Fail

If you want to check with other color combinations, try the [Color Contrast Checker](#).

YUV 100.4930, -0.2430, 124.9786

Background



This preview shows how black text looks on a background with the YUV color 100.4930, -0.2430, 124.9786.

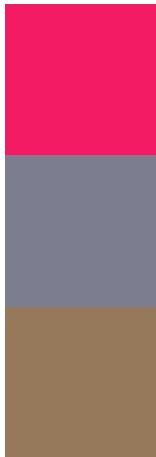


This preview shows how white text looks on a background with the YUV color 100.4930, -0.2430,

Color Blindness Simulation

Color vision deficiency is a very complex topic, and I could not describe the different causes any better than Wikipedia does, so if you want to learn more, you should check out their [article about color blindness](#).

Dichromacy



Original Color

100.4930, -0.2430, 124.9786

Protanopia

127.3400, 7.7204, -2.9292

Deuteranopia

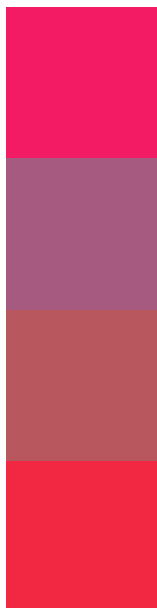
126.1370, -17.8155, 20.9279



Tritanopia

104.3050, -28.7444, 119.8815

Trichromacy



Original Color

100.4930, -0.2430, 124.9786

Protanomaly

117.2410, 4.8112, 43.6386

Deuteranomaly

116.8010, -11.2409, 58.9335

Tritanomaly

102.7750, -18.1301, 122.1003

Monochromacy



Original Color

100.4930, -0.2430, 124.9786

Achromatopsia

100.0000, 0.0000, 0.0000

Achromatomaly

100.2860, -0.1410, 45.3532

CSS Examples

Text

The CSS property to change the color of the text to YUV 100.4930, -0.2430, 124.9786 is called "color". The color property can be set on classes, ids or directly on the HTML element.

This example shows how text in the color `rgb(243, 28, 100)` looks like.

```
.text, #text, p{  
    color:rgb(243, 28, 100)  
}
```

If you want to add a text shadow in that color use the text-shadow property, you can generate a text shadow directly with our [CSS Text Shadow Generator](#).

Here you see how black text with a 4 pixel rgb(243, 28, 100) colored shadow looks like.

```
.shadow{ text-shadow: 4px 4px 2px rgb(243, 28, 100) }
```

Border

The CSS property to change the border of an element to YUV 100.4930, -0.2430, 124.9786 is called "border".

The border property can be set on classes, ids or directly on the HTML element.

This example shows the color as border, it can be applied via the CSS property "border" or "border-color".

```
.border, #border, table{ border:4px solid rgb(243, 28, 100) }
```


If only the border color should be changed use the property `border-color`.

```
.border{ border-color:rgb(243, 28, 100) }
```

If you want to add a box shadow in that color use:

Here you see how a box with a 4 pixel `rgb(243, 28, 100)` colored shadow looks like.

```
.boxshadow{ -moz-box-shadow:4px 4px 4px  
4px rgb(243, 28, 100); -webkit-box-  
shadow:4px 4px 4px 4px rgb(243, 28, 100);  
box-shadow:4px 4px 4px 4px rgb(243, 28,  
100) }
```

Background

The CSS property to change the background color of an element to YUV 100.4930, -0.2430, 124.9786 is called "background". The background property can be set on classes, ids or directly on the HTML element.

```
.background, #background, body{  
background: rgb(243, 28, 100) }
```

If only the background color should be changed can be used:

```
.background{ background-color: rgb(243, 28,  
100) }
```

This example shows the color as background, it is applied via the CSS property "background".

To optimize and compress your CSS code, you can use our [online CSS compressor and optimizer](#) based on csstidy. If you want to create a linear or radial gradient as background or border, check our [CSS Gradient Generator](#).

Hey! You found this booklet interesting? Support Converting Colors with the new Membership Option!

The pro membership hides all ads, plus gives you double the colors in the color bucket, and more awesome pro features!

[Learn more, Memberships starting at \\$2.50/m!](#)

**Follow me
on Twitter!**

@ConvertingColor