

# Converting Colors

YUV(101.2150, -2.0780,  
106.8054)

Have a look what the booklet for  
YUV(101.2150, -2.0780, 106.8054)  
contains.

<b>YUV(101.2150, -2.0780, 106.8054)</b> .....	3
<b><i>Conversions</i></b> .....	4
<b><i>Details</i></b> .....	6
<b><i>Harmonies</i></b> .....	12
<b><i>Previews</i></b> .....	24
<b><i>Color Blindness Simulation</i></b> .....	28
<b><i>CSS Examples</i></b> .....	31

# Color

**YUV(101.2150, -2.0780,  
106.8054)**

# Conversions

## Conversions Part 1

<b>Format</b>	<b>Color</b>
Hex	DF2861
RGB	223, 40, 97
RGB Percent	87%, 16%, 38%
CMY	0.1255, 0.8431, 0.6196
CMYK	0.00, 0.82, 0.57, 0.13
HSL	341°, 74%, 52%
HSV	341°, 82%, 87%
XYZ	33.3479, 18.0686, 13.0392
YIQ	101.2150, 90.7710, 56.5230

# Conversions

## Conversions Part 2

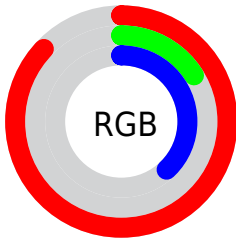
<b>Format</b>	<b>Color</b>
<b>R<sub>YB</sub></b>	223, 40, 97
Decimal	14624865
CIE <sub>Lab</sub>	49.58, 69.98, 14.49
CIE <sub>LCh</sub>	50, 71.467, 11.695
Yxy	18.0686, 0.5174, 0.2803
Android (android.graphics.Color)	4292814945 (0xFFDF2861)
YUV	101.2150, -2.0780, 106.8054
Hunter-Lab	42.5072, 65.6498, 11.5676

# Details

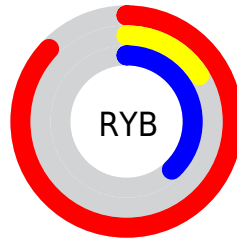
The YUV color **101.2150, -2.0780, 106.8054** is a dark color, and the websafe version is hex **CC3366**. The color can be described as dark washed rose. A complement of this color would be **161.7850, 2.0780, -106.8054**, and the grayscale version is **101.0000, 0.0000, 0.0000**.

A 20% lighter version of the original color is **155.2250, -4.0549, 87.5027**, and **53.9530, -1.4558, 93.8802** is the 20% darker color. If you saturate the color by 10%, you get **86.5910, -2.2634, 119.6307**, and if you desaturate by 10%, it is **115.8390, -1.8926, 93.9802**.

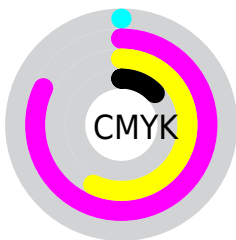
# Distribution



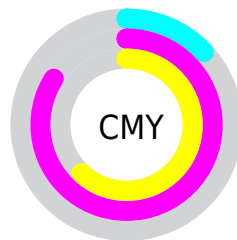
- Red (87%)
- Green (16%)
- Blue (38%)



- Red (87%)
- Yellow (16%)
- Blue (38%)



- Cyan (0%)
- Magenta (82%)
- Yellow (57%)
- Black (13%)



- Cyan (13%)
- Magenta (84%)
- Yellow (62%)

# Brightness & Saturation Gradients

These gradients show how the YUV color 101.2150, -2.0780, 106.8054 changes by changing the brightness by 10 percent. The first figure shows a shift by +10% for each color and the second figure -10%.

Similar to the brightness gradients but the following saturation gradients show a change of the YUV color 101.2150, -2.0780, 106.8054 by changing the saturation by 10% instead.



■ 101.2150, -2.0780,  
106.8054

■ 101.2150, -2.0780,  
106.8054

255.0000, 0.0000,  
0.0000

■ 65.7300, 3.5841,  
110.7388

■ 155.2250, -4.0549,  
87.5027

■ 53.9530, -1.4558,  
93.8802

■ 175.3260, -0.6537,  
69.8741

■ 42.4040, -5.6222,  
76.8217

■ 196.0140, 2.4581,  
51.7307

■ 30.5840, -12.1199,  
60.8778

■ 216.2290, 6.2961,  
34.0022

■ 21.6850, -8.7187,  
43.2493

■ 236.8030, 8.9711,  
15.9588

■ 11.4760, -5.1647,  
23.2615

254.4130, 0.2894,

■ 0.0000, 0.0000,

0.5148

0.0000

■ 101.2150, -2.0780,  
106.8054

■ 101.2150, -2.0780,  
106.8054

■ 86.5910, -2.2634,  
119.6307

■ 115.8390, -1.8926,  
93.9802

■ 74.5430, -2.7327,  
130.1968

■ 131.1640, -1.5599,  
80.5402

■ 145.7880, -1.3745,  
67.7149


■ 160.4120, -1.1891,  
54.8897

■ 175.7370, -0.8563,  
41.4497

■ 190.3610, -0.6710,  
28.6244

 204.9850, -0.4856,  
15.7992

 219.7230, 0.1366,  
2.8739

 234.9340, 0.0325,  
-10.4661

# Harmonies

## Analogous

The Analogous color harmony consists of three colors that are next to each other on the color wheel.



110.6030, 22.8737, 83.6632



101.2150, -2.0780, 106.8054



107.9130, -34.4671, 88.6533

# Triad

The Triadic color harmony groups three colors that are evenly spaced from another and form a triangle on the color wheel.



101.2150, -2.0780, 106.8054



93.8850, -46.2853, -41.1181



105.9210, 63.1429, -92.8927

# Complementary

The Complementary color scheme is a pair of colors which are on the opposite of each other on the color wheel.



101.2150, -2.0780, 106.8054



161.7850, 2.0780, -106.8054

# Split Complementary

Split-complementary colors differ from the complementary color scheme. The scheme consists of three colors, the original color and two neighbors of the complement color.



106.5130, 45.1031, -93.4119



101.2150, -2.0780, 106.8054



92.1320, -7.4601, -80.7998

# Square

The Square scheme is like the rectangle color scheme, but the four colors are evenly spaced on the color wheel.



101.2150, -2.0780, 106.8054



108.3800, -53.4313, 11.0677



100.6020, 19.9162, -88.2280



96.3980, 69.8098, -84.5410



# Rectangle

The Rectangle color scheme consists of four colors that form a rectangle on the color wheel.



101.2150, -2.0780, 106.8054



109.9170, -54.1891, 67.6018



100.6020, 19.9162, -88.2280



107.2430, 58.0542, -94.0521

# Sweetspot

The Sweet Spot groups the original color and five complimentary colors.



101.2150, -2.0780, 106.8054



212.4160, -0.6981, 37.3462



98.2370, 61.5082, 58.5512



102.0290, -0.5073, 22.7766



0.0000, 0.0000, 0.0000



128.0000, 0.0000, 0.0000



# Same Dimension

The Same Dimension uses a secret algorithm to generate beautiful new colors.



101.2150, -2.0780, 106.8054



88.6420, -2.7815, 145.8960



114.6750, -36.8148, 95.0010



104.6310, -0.3111, 6.4626



58.8940, -1.9197, 102.7020



16.0620, -0.5236, 28.0096



# Inverse Universe

The Inverse Universe completely reimagines the original color for something new.



101.2150, -2.0780, 106.8054



88.6420, -2.7815, 145.8960



148.3250, 36.8148, -95.0010



104.6310, -0.3111, 6.4626



58.8940, -1.9197, 102.7020

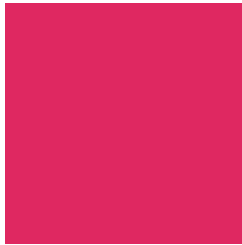


16.0620, -0.5236, 28.0096



# Previews

## White Background



This preview shows how the YUV color 101.2150, -2.0780, 106.8054 looks on a white background.

## Color Contrast Check

Large Text (above 18pt) WCAG AA ✓ Pass

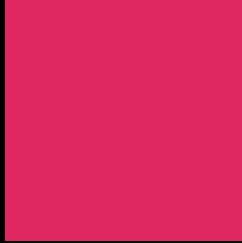
Any Text WCAG AA ✓ Pass

Large Text (above 18pt) WCAG AAA ✓ Pass

Any Text WCAG AAA × Fail



# Black Background



This preview shows how the YUV color 101.2150, -2.0780, 106.8054 looks on a black background.

## Color Contrast Check

Large Text (above 18pt) WCAG AA ✓ Pass

Any Text WCAG AA ✓ Pass

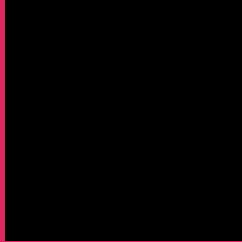
Large Text (above 18pt) WCAG AAA ✓ Pass

Any Text WCAG AAA × Fail

If you want to check with other color combinations, try the [Color Contrast Checker](#).

# YUV 101.2150, -2.0780, 106.8054

## Background



This preview shows how black text looks on a background with the YUV color 101.2150, -2.0780, 106.8054.



This preview shows how white text looks on a background with the YUV color 101.2150, -2.0780,



# Color Blindness Simulation

Color vision deficiency is a very complex topic, and I could not describe the different causes any better than Wikipedia does, so if you want to learn more, you should check out their [article about color blindness](#).

## Dichromacy



### Original Color

101.2150, -2.0780, 106.8054

### Protanopia

119.2260, 7.2836, -2.8292

### Deuteranopia

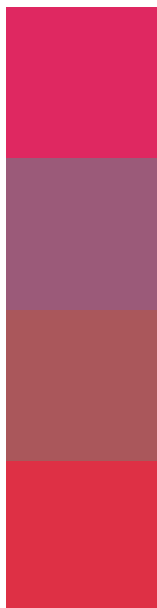
118.8100, -15.1893, 18.5836



## Tritanopia

102.6450, -24.4750, 103.7973

# Trichromacy



## Original Color

101.2150, -2.0780, 106.8054

## Protanomaly

112.9690, 3.9593, 36.8612

## Deuteranomaly

112.2730, -10.4876, 50.6266

## Tritanomaly

102.4200, -16.4761, 104.8717

# Monochromacy



## Original Color

101.2150, -2.0780, 106.8054

## Achromatopsia

101.0000, 0.0000, 0.0000

## Achromatomaly

101.1280, -0.5561, 38.4757

# CSS Examples

## Text

The CSS property to change the color of the text to YUV 101.2150, -2.0780, 106.8054 is called "color". The color property can be set on classes, ids or directly on the HTML element.

This example shows how text in the color `rgb(223, 40, 97)` looks like.

```
.text, #text, p{  
    color:rgb(223, 40, 97)  
}
```

If you want to add a text shadow in that color use the text-shadow property, you can generate a text shadow directly with our [CSS Text Shadow Generator](#).

Here you see how black text with a 4 pixel rgb(223, 40, 97) colored shadow looks like.

```
.shadow{ text-shadow: 4px 4px 2px rgb(223, 40, 97) }
```

## Border

The CSS property to change the border of an element to YUV 101.2150, -2.0780, 106.8054 is called "border".

The border property can be set on classes, ids or directly on the HTML element.

This example shows the color as border, it can be applied via the CSS property "border" or "border-color".

```
.border, #border, table{ border:4px solid rgb(223, 40, 97) }
```



If only the border color should be changed use the property border-color.

```
.border{ border-color:rgb(223, 40, 97) }
```

If you want to add a box shadow in that color use:

Here you see how a box with a 4 pixel rgb(223, 40, 97) colored shadow looks like.

```
.boxshadow{ -moz-box-shadow:4px 4px 4px  
4px rgb(223, 40, 97); -webkit-box-  
shadow:4px 4px 4px 4px rgb(223, 40, 97);  
box-shadow:4px 4px 4px 4px rgb(223, 40,  
97) }
```

# Background

The CSS property to change the background color of an element to YUV 101.2150, -2.0780, 106.8054 is called "background". The background property can be set on classes, ids or directly on the HTML element.

```
.background, #background, body{  
background: rgb(223, 40, 97) }
```

If only the background color should be changed can be used:

```
.background{ background-color: rgb(223, 40,  
97) }
```

This example shows the color as background, it is applied via the CSS property "background".

To optimize and compress your CSS code, you can use our [online CSS compressor and optimizer](#) based on csstidy. If you want to create a linear or radial gradient as background or border, check our [CSS Gradient Generator](#).

Hey! You found this booklet interesting? Support Converting Colors with the new Membership Option!

The pro membership hides all ads, plus gives you double the colors in the color bucket, and more awesome pro features!

**[Learn more, Memberships starting at \\$2.50/m!](#)**

**Follow me  
on Twitter!**

@ConvertingColor