

Converting Colors

YUV(105.4990, -2.7110,
123.2194)

Have a look what the booklet for
YUV(105.4990, -2.7110, 123.2194)
contains.

YUV(105.4990, -2.7110, 123.2194)	3
<i>Conversions</i>	4
<i>Details</i>	6
<i>Harmonies</i>	12
<i>Previews</i>	24
<i>Color Blindness Simulation</i>	28
<i>CSS Examples</i>	31

Color

**YUV(105.4990, -2.7110,
123.2194)**

Conversions

Conversions Part 1

Format	Color
Hex	F62364
RGB	246, 35, 100
RGB Percent	96%, 14%, 39%
CMY	0.0353, 0.8627, 0.6078
CMYK	0.00, 0.86, 0.59, 0.04
HSL	342°, 92%, 55%
HSV	342°, 86%, 96%
XYZ	40.9073, 21.7150, 14.0919
YIQ	105.4990, 104.8910, 64.9470

Conversions

Conversions Part 2

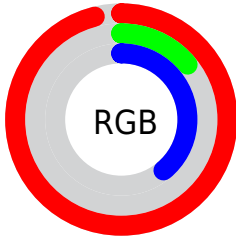
Format	Color
R_{YB}	246, 35, 100
Decimal	16130916
CIE Lab	53.72, 76.97, 19.05
CIE LCh	54, 79.296, 13.898
Yxy	21.7150, 0.5332, 0.2831
Android (android.graphics.Color)	4294320996 (0xFFFF62364)
YUV	105.4990, -2.7110, 123.2194
Hunter-Lab	46.5993, 75.1477, 14.6899

Details

The YUV color **105.4990, -2.7110, 123.2194** is a dark color, and the websafe version is hex **FF3366**. The color can be described as dark washed rose. A complement of this color would be **175.5010, 2.7110, -123.2194**, and the grayscale version is **105.0000, 0.0000, 0.0000**.

A 20% lighter version of the original color is **156.1540, -3.0339, 86.6879**, and **60.5740, -3.2410, 106.4906** is the 20% darker color. If you saturate the color by 10%, you get **88.8860, -2.9018, 137.7890**, and if you desaturate by 10%, it is **122.1120, -2.5202, 108.6498**.

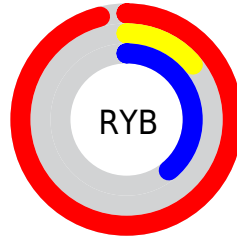
Distribution



Red (96%)

Green (14%)

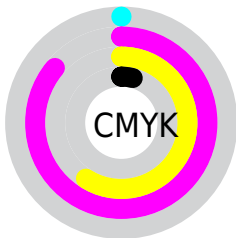
Blue (39%)



Red (96%)

Yellow (14%)

Blue (39%)

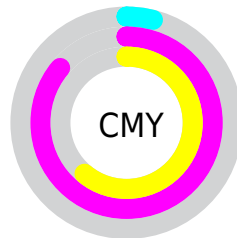


Cyan (0%)

Magenta (86%)

Yellow (59%)

Black (4%)



Cyan (4%)

Magenta (86%)

Yellow (61%)

Brightness & Saturation Gradients

These gradients show how the YUV color 105.4990, -2.7110, 123.2194 changes by changing the brightness by 10 percent. The first figure shows a shift by +10% for each color and the second figure -10%.

Similar to the brightness gradients but the following saturation gradients show a change of the YUV color 105.4990, -2.7110, 123.2194 by changing the saturation by 10% instead.

105.4990, -2.7110,
123.2194

105.4990, -2.7110,
123.2194

255.0000, 0.0000,
0.0000

72.6500, 1.6516,
123.9640

156.1540, -3.0339,
86.6879

60.5740, -3.2410,
106.4906

177.4290, -0.2115,
68.0298

48.7260, -7.2599,
88.8173

198.1170, 2.9003,
49.8864

36.9490, -12.2999,
71.9587

218.9190, 6.4489,
31.6430

26.6540, -11.6614,
53.8004

239.1510, 7.8136,
13.8996

17.2710, -7.5286,
34.8423

5.0830, -2.5059,

10.4512

■ 0.0000, 0.0000,
0.0000

■ 105.4990, -2.7110,
123.2194

■ 105.4990, -2.7110,
123.2194

■ 88.8860, -2.9018,
137.7890

■ 122.1120, -2.5202,
108.6498


■ 82.2180, -3.0655,
143.6368

■ 138.1380, -2.0400,
94.5950


■ 154.7510, -1.8492,
80.0254


■ 170.7770, -1.3691,
65.9706

■ 187.3900, -1.1783,
51.4010

 204.0030, -0.9875,
36.8314

 220.0290, -0.5073,
22.7766

 236.6420, -0.3165,
8.2070

 252.0810, 0.4531,
-5.3330

Harmonies

Analogous

The Analogous color harmony consists of three colors that are next to each other on the color wheel.



116.0980, 25.5877, 99.8921



105.4990, -2.7110, 123.2194



116.5460, -41.1882, 97.7452

Triad

The Triadic color harmony groups three colors that are evenly spaced from another and form a triangle on the color wheel.



105.4990, -2.7110, 123.2194



96.7320, -47.6889, -57.6470



115.3590, 68.8430, -101.1698

Complementary

The Complementary color scheme is a pair of colors which are on the opposite of each other on the color wheel.



105.4990, -2.7110, 123.2194



175.5010, 2.7110, -123.2194

Split Complementary

Split-complementary colors differ from the complementary color scheme. The scheme consists of three colors, the original color and two neighbors of the complement color.



116.9940, 52.2610, -102.6037



105.4990, -2.7110, 123.2194



101.0170, -6.4174, -88.5919

Square

The Square scheme is like the rectangle color scheme, but the four colors are evenly spaced on the color wheel.



105.4990, -2.7110, 123.2194



116.9190, -57.6411, 7.9640



110.8720, 23.7271, -97.2347



103.0320, 74.9202, -90.3591

Rectangle

The Rectangle color scheme consists of four colors that form a rectangle on the color wheel.



105.4990, -2.7110, 123.2194



119.6850, -59.0047, 72.1903



110.8720, 23.7271, -97.2347



117.3650, 66.3751, -102.9291

Sweetspot

The Sweet Spot groups the original color and five complimentary colors.



105.4990, -2.7110, 123.2194



211.0140, -0.9929, 38.5757



102.1100, 70.9378, 67.4325



101.3280, -0.6547, 23.3913



0.0000, 0.0000, 0.0000



128.0000, 0.0000, 0.0000

Same Dimension

The Same Dimension uses a secret algorithm to generate beautiful new colors.



105.4990, -2.7110, 123.2194



85.2510, -3.0817, 148.8699



120.9820, -42.3891, 109.6408



114.0440, -0.0217, 6.9774



62.1120, -2.5202, 108.6498



19.6930, -0.8346, 34.4722

Inverse Universe

The Inverse Universe completely reimagines the original color for something new.



105.4990, -2.7110, 123.2194



85.2510, -3.0817, 148.8699



160.0180, 42.3891, -109.6408



114.0440, -0.0217, 6.9774



62.1120, -2.5202, 108.6498



19.6930, -0.8346, 34.4722

Previews

White Background



This preview shows how the YUV color 105.4990, -2.7110, 123.2194 looks on a white background.

Color Contrast Check

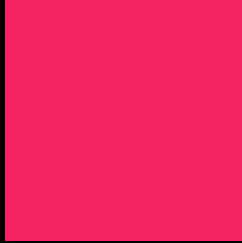
Large Text (above 18pt) WCAG AA ✓ Pass

Any Text WCAG AA × Fail

Large Text (above 18pt) WCAG AAA × Fail

Any Text WCAG AAA × Fail

Black Background



This preview shows how the YUV color 105.4990, -2.7110, 123.2194 looks on a black background.

Color Contrast Check

Large Text (above 18pt) WCAG AA ✓ Pass

Any Text WCAG AA ✓ Pass

Large Text (above 18pt) WCAG AAA ✓ Pass

Any Text WCAG AAA × Fail

If you want to check with other color combinations, try the [Color Contrast Checker](#).

YUV 105.4990, -2.7110, 123.2194

Background



This preview shows how black text looks on a background with the YUV color 105.4990, -2.7110, 123.2194.



This preview shows how white text looks on a background with the YUV color 105.4990, -2.7110,

Color Blindness Simulation

Color vision deficiency is a very complex topic, and I could not describe the different causes any better than Wikipedia does, so if you want to learn more, you should check out their [article about color blindness](#).

Dichromacy



Original Color

105.4990, -2.7110, 123.2194

Protanopia

129.4820, 5.6784, -1.2997

Deuteranopia

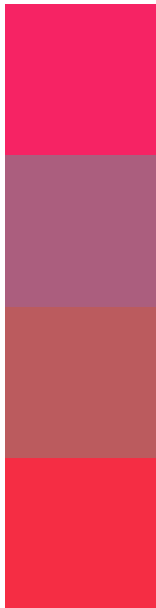
128.5070, -18.9840, 22.3574



Tritanopia

108.0060, -28.5970, 119.2667

Trichromacy



Original Color

105.4990, -2.7110, 123.2194

Protanomaly

120.6710, 2.6272, 44.1385

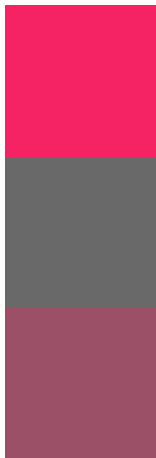
Deuteranomaly

120.0460, -12.8407, 58.7187

Tritanomaly

107.4220, -19.4350, 120.6559

Monochromacy



Original Color

105.4990, -2.7110, 123.2194

Achromatopsia

105.0000, 0.0000, 0.0000

Achromatomaly

105.3460, -1.1566, 44.4236

CSS Examples

Text

The CSS property to change the color of the text to YUV 105.4990, -2.7110, 123.2194 is called "color". The color property can be set on classes, ids or directly on the HTML element.

This example shows how text in the color `rgb(246, 35, 100)` looks like.

```
.text, #text, p{  
    color:rgb(246, 35, 100)  
}
```

If you want to add a text shadow in that color use the text-shadow property, you can generate a text shadow directly with our [CSS Text Shadow Generator](#).

Here you see how black text with a 4 pixel rgb(246, 35, 100) colored shadow looks like.

```
.shadow{ text-shadow: 4px 4px 2px rgb(246, 35, 100) }
```

Border

The CSS property to change the border of an element to YUV 105.4990, -2.7110, 123.2194 is called "border".

The border property can be set on classes, ids or directly on the HTML element.

This example shows the color as border, it can be applied via the CSS property "border" or "border-color".

```
.border, #border, table{ border:4px solid rgb(246, 35, 100) }
```


If only the border color should be changed use the property `border-color`.

```
.border{ border-color:rgb(246, 35, 100) }
```

If you want to add a box shadow in that color use:

Here you see how a box with a 4 pixel `rgb(246, 35, 100)` colored shadow looks like.

```
.boxshadow{ -moz-box-shadow:4px 4px 4px  
4px rgb(246, 35, 100); -webkit-box-  
shadow:4px 4px 4px 4px rgb(246, 35, 100);  
box-shadow:4px 4px 4px 4px rgb(246, 35,  
100) }
```

Background

The CSS property to change the background color of an element to YUV 105.4990, -2.7110, 123.2194 is called "background". The background property can be set on classes, ids or directly on the HTML element.

```
.background, #background, body{  
background: rgb(246, 35, 100) }
```

If only the background color should be changed can be used:

```
.background{ background-color: rgb(246, 35,  
100) }
```

This example shows the color as background, it is applied via the CSS property "background".

To optimize and compress your CSS code, you can use our [online CSS compressor and optimizer](#) based on csstidy. If you want to create a linear or radial gradient as background or border, check our [CSS Gradient Generator](#).

Hey! You found this booklet interesting? Support Converting Colors with the new Membership Option!

The pro membership hides all ads, plus gives you double the colors in the color bucket, and more awesome pro features!

[Learn more, Memberships starting at \\$2.50/m!](#)

**Follow me
on Twitter!**

@ConvertingColor