

Converting Colors

YUV(108.2870, -1.1275,
128.6673)

Have a look what the booklet for
YUV(108.2870, -1.1275, 128.6673)
contains.

YUV(108.2870, -1.1275, 128.6673)	3
<i>Conversions</i>	4
<i>Details</i>	6
<i>Harmonies</i>	12
<i>Previews</i>	24
<i>Color Blindness Simulation</i>	28
<i>CSS Examples</i>	31

Color

**YUV(108.2870, -1.1275,
128.6673)**

Conversions

Conversions Part 1

Format	Color
Hex	FF226A
RGB	255, 34, 106
RGB Percent	100%, 13%, 42%
CMY	0.0000, 0.8667, 0.5843
CMYK	0.00, 0.87, 0.58, 0.00
HSL	340°, 100%, 57%
HSV	340°, 87%, 100%
XYZ	44.4135, 23.4447, 15.8201
YIQ	108.2870, 108.6040, 69.2440

Conversions

Conversions Part 2

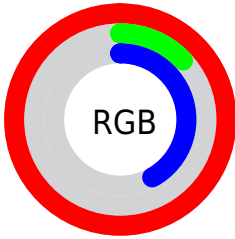
Format	Color
R_{YB}	255, 34, 106
Decimal	16720490
CIE _{Lab}	55.53, 79.69, 18.18
CIE _{LCh}	56, 81.737, 12.851
Yxy	23.4447, 0.5308, 0.2802
Android (android.graphics.Color)	4294910570 (0xFFFF226A)
YUV	108.2870, -1.1275, 128.6673
Hunter-Lab	48.4197, 78.9968, 14.5221

Details

The YUV color **108.2870, -1.1275, 128.6673** is a dark color, and the websafe version is hex **FF0066**. The color can be described as dark washed rose. A complement of this color would be **180.7130, 1.1275, -128.6673**, and the grayscale version is **108.0000, 0.0000, 0.0000**.

A 20% lighter version of the original color is **157.5390, -0.2657, 85.4733**, and **63.9490, -1.9469, 111.4237** is the 20% darker color. If you saturate the color by 10%, you get **91.0870, -1.0289, 143.7517**, and if you desaturate by 10%, it is **124.9000, -0.9367, 114.0977**.

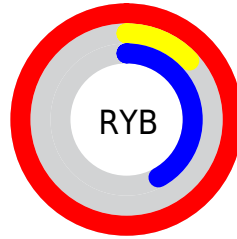
Distribution



Red (100%)

Green (13%)

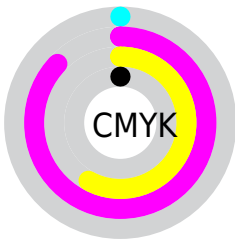
Blue (42%)



Red (100%)

Yellow (13%)

Blue (42%)

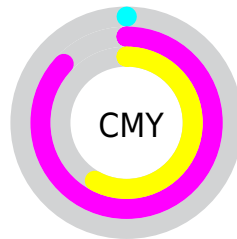


Cyan (0%)

Magenta (87%)

Yellow (58%)

Black (0%)



Cyan (0%)

Magenta (87%)

Yellow (58%)

Brightness & Saturation Gradients

These gradients show how the YUV color 108.2870, -1.1275, 128.6673 changes by changing the brightness by 10 percent. The first figure shows a shift by +10% for each color and the second figure -10%.

Similar to the brightness gradients but the following saturation gradients show a change of the YUV color 108.2870, -1.1275, 128.6673 by changing the saturation by 10% instead.

■ 108.2870, -1.1275,
128.6673

■ 108.2870, -1.1275,
128.6673

255.0000, 0.0000,
0.0000

■ 76.0250, 2.9457,
128.8971

■ 157.5390, -0.2657,
85.4733

■ 63.9490, -1.9469,
111.4237

■ 178.8140, 2.5567,
66.8151

■ 51.9870, -6.4026,
93.8504

■ 200.0890, 5.3791,
48.1569

■ 40.1390, -10.4215,
76.1771

■ 220.8910, 8.9277,
29.9136

■ 29.0460, -12.8407,
58.7187

■ 240.3250, 7.2348,
12.8700

■ 19.7770, -8.2711,
39.6606

■ 9.3830, -4.1328,

18.9581

■ 0.0000, 0.0000,
0.0000

■ 108.2870, -1.1275,
128.6673

■ 108.2870, -1.1275,
128.6673

■ 91.0870, -1.0289,
143.7517

■ 124.9000, -0.9367,
114.0977

■ 85.7070, -1.3346,
148.4700

■ 142.1000, -1.0353,
99.0133

■ 158.8270, -0.4077,
84.3437

■ 176.0270, -0.5063,
69.2593

■ 193.2270, -0.6049,
54.1749

■ 209.8400, -0.4141,
39.6053

■ 226.4530, -0.2233,
25.0357

■ 243.7670, 0.1149,
9.8513

■ 255.0000, 0.0000,
0.0000

Harmonies

Analogous

The Analogous color harmony consists of three colors that are next to each other on the color wheel.



120.9780, 27.6188, 101.7513



108.2870, -1.1275, 128.6673



120.1660, -41.4938, 102.4634

Triad

The Triadic color harmony groups three colors that are evenly spaced from another and form a triangle on the color wheel.



108.2870, -1.1275, 128.6673



102.0590, -50.3151, -55.3027



118.8810, 67.1067, -104.2586

Complementary

The Complementary color scheme is a pair of colors which are on the opposite of each other on the color wheel.



108.2870, -1.1275, 128.6673



180.7130, 1.1275, -128.6673

Split Complementary

Split-complementary colors differ from the complementary color scheme. The scheme consists of three colors, the original color and two neighbors of the complement color.



121.2000, 53.1454, -106.2924



108.2870, -1.1275, 128.6673



104.5390, -8.1537, -91.6807

Square

The Square scheme is like the rectangle color scheme, but the four colors are evenly spaced on the color wheel.



108.2870, -1.1275, 128.6673



121.9470, -60.1199, 9.6935



114.2630, 24.0273, -100.2087



106.5540, 73.1839, -93.4479

Rectangle

The Rectangle color scheme consists of four colors that form a rectangle on the color wheel.



108.2870, -1.1275, 128.6673



123.5500, -60.9101, 76.6937



114.2630, 24.0273, -100.2087



121.2290, 65.9491, -106.3178

Sweetspot

The Sweet Spot groups the original color and five complimentary colors.



108.2870, -1.1275, 128.6673



211.1280, -0.5561, 38.4757



103.1470, 74.8635, 68.2771



101.4420, -0.2179, 23.2914



0.0000, 0.0000, 0.0000



128.0000, 0.0000, 0.0000

Same Dimension

The Same Dimension uses a secret algorithm to generate beautiful new colors.



108.2870, -1.1275, 128.6673



85.7070, -1.3346, 148.4700



121.7980, -43.2844, 116.8182



119.3430, -0.1691, 7.5922



64.1770, -1.0733, 111.2238



21.5300, -0.2613, 37.2462

Inverse Universe

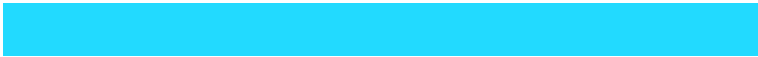
The Inverse Universe completely reimagines the original color for something new.



108.2870, -1.1275, 128.6673



85.7070, -1.3346, 148.4700



167.2020, 43.2844, -116.8182



119.3430, -0.1691, 7.5922



64.1770, -1.0733, 111.2238



21.5300, -0.2613, 37.2462

Previews

White Background



This preview shows how the YUV color 108.2870, -1.1275, 128.6673 looks on a white background.

Color Contrast Check

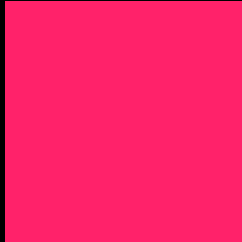
Large Text (above 18pt) WCAG AA ✓ Pass

Any Text WCAG AA × Fail

Large Text (above 18pt) WCAG AAA × Fail

Any Text WCAG AAA × Fail

Black Background



This preview shows how the YUV color 108.2870, -1.1275, 128.6673 looks on a black background.

Color Contrast Check

Large Text (above 18pt) WCAG AA ✓ Pass

Any Text WCAG AA ✓ Pass

Large Text (above 18pt) WCAG AAA ✓ Pass

Any Text WCAG AAA × Fail

If you want to check with other color combinations, try the [Color Contrast Checker](#).

YUV 108.2870, -1.1275, 128.6673

Background



This preview shows how black text looks on a background with the YUV color 108.2870, -1.1275, 128.6673.



This preview shows how white text looks on a background with the YUV color 108.2870, -1.1275,

Color Blindness Simulation

Color vision deficiency is a very complex topic, and I could not describe the different causes any better than Wikipedia does, so if you want to learn more, you should check out their [article about color blindness](#).

Dichromacy



Original Color

108.2870, -1.1275, 128.6673

Protanopia

133.7530, 8.0098, -2.4144

Deuteranopia

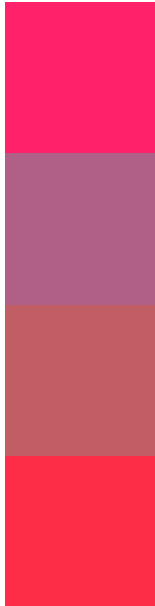
133.3220, -18.3997, 21.6426



Tritanopia

111.3980, -29.7762, 124.1850

Trichromacy



Original Color

108.2870, -1.1275, 128.6673

Protanomaly

124.2520, 4.8058, 45.3830

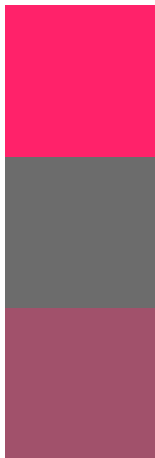
Deuteranomaly

124.2850, -11.9725, 60.2631

Tritanomaly

110.4550, -19.4513, 125.8890

Monochromacy



Original Color

108.2870, -1.1275, 128.6673

Achromatopsia

108.0000, 0.0000, 0.0000

Achromatomaly

107.8840, -0.4358, 46.5827

CSS Examples

Text

The CSS property to change the color of the text to YUV 108.2870, -1.1275, 128.6673 is called "color". The color property can be set on classes, ids or directly on the HTML element.

This example shows how text in the color `rgb(255, 34, 106)` looks like.

```
.text, #text, p{  
    color:rgb(255, 34, 106)  
}
```

If you want to add a text shadow in that color use the text-shadow property, you can generate a text shadow directly with our [CSS Text Shadow Generator](#).

Here you see how black text with a 4 pixel rgb(255, 34, 106) colored shadow looks like.

```
.shadow{ text-shadow: 4px 4px 2px rgb(255, 34, 106) }
```

Border

The CSS property to change the border of an element to YUV 108.2870, -1.1275, 128.6673 is called "border".

The border property can be set on classes, ids or directly on the HTML element.

This example shows the color as border, it can be applied via the CSS property "border" or "border-color".

```
.border, #border, table{ border:4px solid rgb(255, 34, 106) }
```


If only the border color should be changed use the property `border-color`.

```
.border{ border-color:rgb(255, 34, 106) }
```

If you want to add a box shadow in that color use:

Here you see how a box with a 4 pixel `rgb(255, 34, 106)` colored shadow looks like.

```
.boxshadow{ -moz-box-shadow:4px 4px 4px  
4px rgb(255, 34, 106); -webkit-box-  
shadow:4px 4px 4px 4px rgb(255, 34, 106);  
box-shadow:4px 4px 4px 4px rgb(255, 34,  
106) }
```

Background

The CSS property to change the background color of an element to YUV 108.2870, -1.1275, 128.6673 is called "background". The background property can be set on classes, ids or directly on the HTML element.

```
.background, #background, body{  
background: rgb(255, 34, 106) }
```

If only the background color should be changed can be used:

```
.background{ background-color: rgb(255, 34,  
106) }
```

This example shows the color as background, it is applied via the CSS property "background".

To optimize and compress your CSS code, you can use our [online CSS compressor and optimizer](#) based on csstidy. If you want to create a linear or radial gradient as background or border, check our [CSS Gradient Generator](#).

Hey! You found this booklet interesting? Support Converting Colors with the new Membership Option!

The pro membership hides all ads, plus gives you double the colors in the color bucket, and more awesome pro features!

[Learn more, Memberships starting at \\$2.50/m!](#)

**Follow me
on Twitter!**

@ConvertingColor