

Converting Colors

YUV(108.3920, -14.4903,
27.7202)

Have a look what the booklet for
YUV(108.3920, -14.4903, 27.7202)
contains.

YUV(108.3920, -14.4903, 27.7202)	3
<i>Conversions</i>	4
<i>Details</i>	6
<i>Harmonies</i>	12
<i>Previews</i>	24
<i>Color Blindness Simulation</i>	28
<i>CSS Examples</i>	31

Color

**YUV(108.3920, -14.4903,
27.7202)**

Conversions

Conversions Part 1

Format	Color
Hex	8C624F
RGB	140, 98, 79
RGB Percent	55%, 38%, 31%
CMY	0.4510, 0.6157, 0.6902
CMYK	0.00, 0.30, 0.44, 0.45
HSL	19°, 28%, 43%
HSV	19°, 44%, 55%
XYZ	16.5942, 14.8753, 9.3938
YIQ	108.3920, 31.1310, 2.9950

Conversions

Conversions Part 2

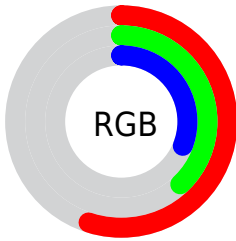
Format	Color
R_{YB}	140, 107, 79
Decimal	9200207
CIE _{Lab}	45.46, 14.53, 17.60
CIE _{LCh}	45, 22.818, 50.460
Yxy	14.8753, 0.4061, 0.3640
Android (android.graphics.Color)	4287390287 (0xFF8C624F)
YUV	108.3920, -14.4903, 27.7202
Hunter-Lab	38.5685, 9.3050, 12.5573

Details

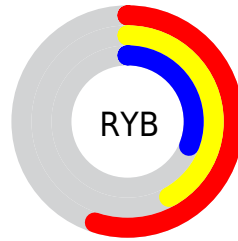
The YUV color **108.3920, -14.4903, 27.7202** is a dark color, and the websafe version is hex **996666**. A complement of this color would be **110.6080, 14.4903, -27.7202**, and the grayscale version is **109.0000, 0.0000, 0.0000**.

A 20% lighter version of the original color is **160.3600, -15.9535, 30.3793**, and **60.1250, -12.8796, 24.4464** is the 20% darker color. If you saturate the color by 10%, you get **100.9260, -17.7115, 34.2679**, and if you desaturate by 10%, it is **115.8580, -11.2690, 21.1725**.

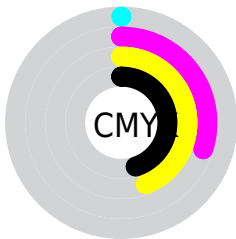
Distribution



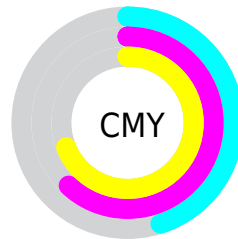
- Red (55%)
- Green (38%)
- Blue (31%)



- Red (55%)
- Yellow (42%)
- Blue (31%)



- Cyan (0%)
- Magenta (30%)
- Yellow (44%)
- Black (45%)



- Cyan (45%)
- Magenta (62%)
- Yellow (69%)

Brightness & Saturation Gradients

These gradients show how the YUV color 108.3920, -14.4903, 27.7202 changes by changing the brightness by 10 percent. The first figure shows a shift by +10% for each color and the second figure -10%.

Similar to the brightness gradients but the following saturation gradients show a change of the YUV color 108.3920, -14.4903, 27.7202 by changing the saturation by 10% instead.

■ 108.3920,
-14.4903, 27.7202

■ 108.3920,
-14.4903, 27.7202

■ 255.0000, 0.0000,
0.0000

■ 83.6090, -13.6112,
25.7759

■ 160.3600,
-15.9535, 30.3793

■ 60.1250, -12.8796,
24.4464

■ 187.8440,
-16.6851, 31.7088

■ 37.9290, -12.2900,
21.9873

■ 215.4420,
-16.9799, 32.9384

■ 16.6560, -8.2114,
20.4727

■ 235.6680,
-13.1473, 16.9542

■ 0.0000, 0.0000,
0.0000

■ 252.9480, -7.8624,
1.7996

■ 108.3920,
-14.4903, 27.7202

■ 108.3920,
-14.4903, 27.7202

■ 100.9260,
-17.7115, 34.2679

■ 115.8580,
-11.2690, 21.1725

■ 94.0470, -21.2222,
40.3008

■ 122.7370, -7.7583,
15.1397

■ 86.5810, -24.4434,
46.8485

■ 130.2030, -4.5371,
8.5920

■ 79.1150, -27.6647,
53.3961

■ 137.6690, -1.3158,
2.0443

■ 72.2360, -31.1753,
59.4290

■ 144.5480, 2.1948,
-3.9886

■ 67.6880, -33.3702,
63.4176

■ 152.0140, 5.4161,
-10.5363

■ 158.8930, 8.9268,
-16.5692

■ 166.3590, 12.1480,

-23.1168

■ 173.8250, 15.3693,
-29.6645

Harmonies

Analogous

The Analogous color harmony consists of three colors that are next to each other on the color wheel.



109.6620, -7.2284, 31.8684



108.3920, -14.4903, 27.7202



106.7020, -18.0941, 16.9243

Triad

The Triadic color harmony groups three colors that are evenly spaced from another and form a triangle on the color wheel.



108.3920, -14.4903, 27.7202



99.6170, 0.6818, -32.1131



108.4350, 17.0405, -5.6435

Complementary

The Complementary color scheme is a pair of colors which are on the opposite of each other on the color wheel.



108.3920, -14.4903, 27.7202



110.6080, 14.4903, -27.7202

Split Complementary

Split-complementary colors differ from the complementary color scheme. The scheme consists of three colors, the original color and two neighbors of the complement color.



103.5140, 20.4526, -26.7608



108.3920, -14.4903, 27.7202



96.7000, 11.4869, -44.4639

Square

The Square scheme is like the rectangle color scheme, but the four colors are evenly spaced on the color wheel.



108.3920, -14.4903, 27.7202



102.6810, -9.7027, -14.6292



98.2470, 18.6122, -43.1896



110.2480, 10.7237, 13.8145

Rectangle

The Rectangle color scheme consists of four colors that form a rectangle on the color wheel.



108.3920, -14.4903, 27.7202



106.0490, -17.7722, 6.9730



98.2470, 18.6122, -43.1896



106.8470, 18.8094, -13.0208

Sweetspot

The Sweet Spot groups the original color and five complimentary colors.



108.3920, -14.4903, 27.7202



168.9860, -5.4161, 10.5363



102.1410, 9.7905, 33.2023



84.4200, -3.6581, 6.6477



219.0000, 0.0000, 0.0000



92.0000, 0.0000, 0.0000

Same Dimension

The Same Dimension uses a secret algorithm to generate beautiful new colors.



108.3920, -14.4903, 27.7202



132.1290, -22.2486, 42.8599



126.0020, -23.1720, 12.2762



65.2670, -1.6106, 3.2738



63.8340, -31.4702, 60.6586



2.6690, -1.3158, 2.0443

Inverse Universe

The Inverse Universe completely reimagines the original color for something new.



110.6080, 14.4903, -27.7202



135.8710, 22.2486, -42.8599



92.9980, 23.1720, -12.2762



65.7330, 1.6106, -3.2738



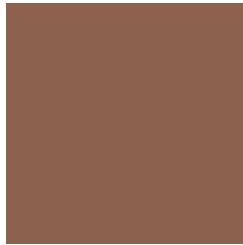
68.5790, 31.7596, -60.1438



2.9180, 1.0264, -2.5591

Previews

White Background



This preview shows how the YUV color 108.3920, -14.4903, 27.7202 looks on a white background.

Color Contrast Check

Large Text (above 18pt) WCAG AA ✓ Pass

Any Text WCAG AA ✓ Pass

Large Text (above 18pt) WCAG AAA ✓ Pass

Any Text WCAG AAA × Fail

Black Background



This preview shows how the YUV color 108.3920, -14.4903, 27.7202 looks on a black background.

Color Contrast Check

Large Text (above 18pt) WCAG AA ✓ Pass

Any Text WCAG AA × Fail

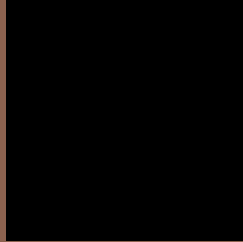
Large Text (above 18pt) WCAG AAA × Fail

Any Text WCAG AAA × Fail

If you want to check with other color combinations, try the [Color Contrast Checker](#).

YUV 108.3920, -14.4903, 27.7202

Background



This preview shows how black text looks on a background with the YUV color 108.3920, -14.4903, 27.7202.



This preview shows how white text looks on a background with the YUV color 108.3920, -14.4903, 27.7202.

Color Blindness Simulation

Color vision deficiency is a very complex topic, and I could not describe the different causes any better than Wikipedia does, so if you want to learn more, you should check out their [article about color blindness](#).

Dichromacy



Original Color

108.3920, -14.4903, 27.7202

Protanopia

107.2430, -11.9518, 6.8029

Deuteranopia

107.6250, -14.6051, 17.8689



Tritanopia

109.8510, -3.8705, 28.1947

Trichromacy



Original Color

108.3920, -14.4903, 27.7202

Protanomaly

107.4720, -12.5577, 14.4951

Deuteranomaly

107.6470, -14.6160, 21.3576

Tritanomaly

109.2270, -7.5069, 27.8649

Monochromacy



Original Color

108.3920, -14.4903, 27.7202

Achromatopsia

108.0000, 0.0000, 0.0000

Achromatomaly

107.9860, -5.4161, 10.5363

CSS Examples

Text

The CSS property to change the color of the text to YUV 108.3920, -14.4903, 27.7202 is called "color". The color property can be set on classes, ids or directly on the HTML element.

This example shows how text in the color `rgb(140, 98, 79)` looks like.

```
.text, #text, p{  
    color:rgb(140, 98, 79)  
}
```

If you want to add a text shadow in that color use the text-shadow property, you can generate a text shadow directly with our [CSS Text Shadow Generator](#).

Here you see how black text with a 4 pixel rgb(140, 98, 79) colored shadow looks like.

```
.shadow{ text-shadow: 4px 4px 2px rgb(140, 98, 79) }
```

Border

The CSS property to change the border of an element to YUV 108.3920, -14.4903, 27.7202 is called "border".

The border property can be set on classes, ids or directly on the HTML element.

This example shows the color as border, it can be applied via the CSS property "border" or "border-color".

```
.border, #border, table{ border:4px solid rgb(140, 98, 79) }
```


If only the border color should be changed use the property `border-color`.

```
.border{ border-color:rgb(140, 98, 79) }
```

If you want to add a box shadow in that color use:

Here you see how a box with a 4 pixel `rgb(140, 98, 79)` colored shadow looks like.

```
.boxshadow{ -moz-box-shadow:4px 4px 4px  
4px rgb(140, 98, 79); -webkit-box-  
shadow:4px 4px 4px 4px rgb(140, 98, 79);  
box-shadow:4px 4px 4px 4px rgb(140, 98,  
79) }
```

Background

The CSS property to change the background color of an element to YUV 108.3920, -14.4903, 27.7202 is called "background". The background property can be set on classes, ids or directly on the HTML element.

```
.background, #background, body{  
background: rgb(140, 98, 79) }
```

If only the background color should be changed can be used:

```
.background{ background-color: rgb(140, 98,  
79) }
```

This example shows the color as background, it is applied via the CSS property "background".

To optimize and compress your CSS code, you can use our [online CSS compressor and optimizer](#) based on csstidy. If you want to create a linear or radial gradient as background or border, check our [CSS Gradient Generator](#).

Hey! You found this booklet interesting? Support Converting Colors with the new Membership Option!

The pro membership hides all ads, plus gives you double the colors in the color bucket, and more awesome pro features!

[Learn more, Memberships starting at \\$2.50/m!](#)

**Follow me
on Twitter!**

@ConvertingColor