

Converting Colors

YUV(110.0490, -14.3212,
20.1280)

Have a look what the booklet for
YUV(110.0490, -14.3212, 20.1280)
contains.

YUV(110.0490, -14.3212, 20.1280)	3
<i>Conversions</i>	4
<i>Details</i>	6
<i>Harmonies</i>	12
<i>Previews</i>	24
<i>Color Blindness Simulation</i>	28
<i>CSS Examples</i>	31

Color

**YUV(110.0490, -14.3212,
20.1280)**

Conversions

Conversions Part 1

Format	Color
Hex	856851
RGB	133, 104, 81
RGB Percent	52%, 41%, 32%
CMY	0.4784, 0.5922, 0.6824
CMYK	0.00, 0.22, 0.39, 0.48
HSL	27°, 24%, 42%
HSV	27°, 39%, 52%
XYZ	16.1084, 15.4813, 9.9238
YIQ	110.0490, 24.6670, -1.0050

Conversions

Conversions Part 2

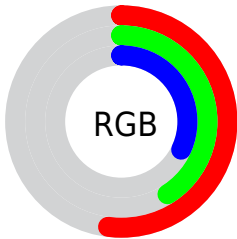
Format	Color
R_{YB}	133, 122, 81
Decimal	8742993
CIE Lab	46.29, 8.22, 17.38
CIE LCh	46, 19.232, 64.686
Yxy	15.4813, 0.3880, 0.3729
Android (android.graphics.Color)	4286933073 (0xFF856851)
YUV	110.0490, -14.3212, 20.1280
Hunter-Lab	39.3462, 4.2222, 12.5885

Details

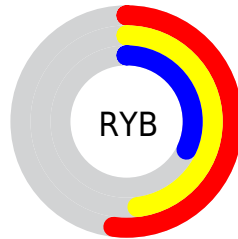
The YUV color **110.0490, -14.3212, 20.1280** is a dark color, and the websafe version is hex **996666**. A complement of this color would be **103.9510, 14.3212, -20.1280**, and the grayscale version is **110.0000, 0.0000, 0.0000**.

A 20% lighter version of the original color is **161.7180, -15.6370, 22.1723**, and **62.0810, -12.8579, 17.4690** is the 20% darker color. If you saturate the color by 10%, you get **104.4580, -17.9738, 25.0313**, and if you desaturate by 10%, it is **115.6400, -10.6685, 15.2247**.

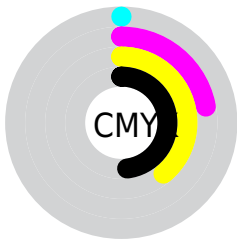
Distribution



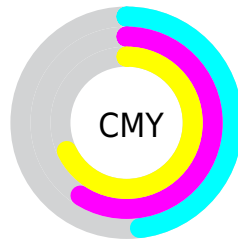
- Red (52%)
- Green (41%)
- Blue (32%)



- Red (52%)
- Yellow (48%)
- Blue (32%)



- Cyan (0%)
- Magenta (22%)
- Yellow (39%)
- Black (48%)



- Cyan (48%)
- Magenta (59%)
- Yellow (68%)

Brightness & Saturation Gradients

These gradients show how the YUV color 110.0490, -14.3212, 20.1280 changes by changing the brightness by 10 percent. The first figure shows a shift by +10% for each color and the second figure -10%.

Similar to the brightness gradients but the following saturation gradients show a change of the YUV color 110.0490, -14.3212, 20.1280 by changing the saturation by 10% instead.

■ 110.0490,
-14.3212, 20.1280

■ 110.0490,
-14.3212, 20.1280

■ 255.0000, 0.0000,
0.0000

■ 85.5650, -13.5895,
18.7985

■ 161.7180,
-15.6370, 22.1723

■ 62.0810, -12.8579,
17.4690

■ 189.0170,
-15.7844, 22.7871

■ 39.5970, -12.1263,
16.1394

■ 217.2020,
-16.3686, 23.5018

■ 19.5690, -9.6475,
14.4100

■ 240.0050,
-14.2995, 13.1506

■ 0.0000, 0.0000,
0.0000

■ 253.2900, -6.5520,
1.4997

■ 110.0490,
-14.3212, 20.1280

■ 110.0490,
-14.3212, 20.1280

■ 104.4580,
-17.9738, 25.0313

■ 115.6400,
-10.6685, 15.2247

■ 98.1660, -21.7738,
30.5494

■ 121.9320, -6.8685,
9.7066

■ 92.5750, -25.4265,
35.4527

■ 127.5230, -3.2158,
4.8033

■ 86.3970, -28.7897,
40.8708

■ 133.7010, 0.1474,
-0.6148

■ 80.8060, -32.4424,
45.7741

■ 139.4060, 4.2368,
-5.6181

■ 74.5140, -36.2424,
51.2922

■ 145.5840, 7.6001,
-11.0362

■ 74.4000, -36.6792,
51.3922

■ 151.1750, 11.2527,
-15.9395

■ 156.7660, 14.9054,

-20.8428

■ 163.0580, 18.7054,
-26.3609

Harmonies

Analogous

The Analogous color harmony consists of three colors that are next to each other on the color wheel.



111.3470, -9.5381, 26.0057



110.0490, -14.3212, 20.1280



108.4560, -15.0148, 9.2471

Triad

The Triadic color harmony groups three colors that are evenly spaced from another and form a triangle on the color wheel.



110.0490, -14.3212, 20.1280



102.6540, 4.6076, -31.2686



111.5240, 12.0667, 3.0485

Complementary

The Complementary color scheme is a pair of colors which are on the opposite of each other on the color wheel.



110.0490, -14.3212, 20.1280



103.9510, 14.3212, -20.1280

Split Complementary

Split-complementary colors differ from the complementary color scheme. The scheme consists of three colors, the original color and two neighbors of the complement color.



108.4510, 16.0467, -13.5505



110.0490, -14.3212, 20.1280



101.9830, 12.3334, -35.9421

Square

The Square scheme is like the rectangle color scheme, but the four colors are evenly spaced on the color wheel.



110.0490, -14.3212, 20.1280



104.3260, -4.5977, -18.7029



104.7650, 16.3849, -28.7349



112.6030, 5.6187, 17.8882

Rectangle

The Rectangle color scheme consists of four colors that form a rectangle on the color wheel.



110.0490, -14.3212, 20.1280



107.4440, -13.5299, -0.3894



104.7650, 16.3849, -28.7349



110.9470, 13.8301, -2.5845

Sweetspot

The Sweet Spot groups the original color and five complimentary colors.



110.0490, -14.3212, 20.1280



164.2630, -5.5527, 7.6623



99.8540, 5.0020, 29.0690



81.5230, -3.2158, 4.8033



214.0000, 0.0000, 0.0000



87.0000, 0.0000, 0.0000

Same Dimension

The Same Dimension uses a secret algorithm to generate beautiful new colors.



110.0490, -14.3212, 20.1280



137.3510, -22.3580, 31.2642



125.3110, -21.8453, 6.7433



63.5550, -1.7526, 2.1443



72.9160, -35.9476, 50.0627



1.4840, -0.7316, 1.3295

Inverse Universe

The Inverse Universe completely reimagines the original color for something new.



103.9510, 14.3212, -20.1280



127.6490, 22.3580, -31.2642



88.6890, 21.8453, -6.7433



62.4450, 1.7526, -2.1443



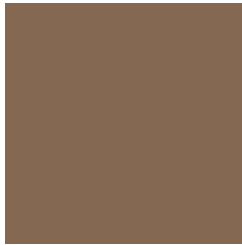
57.6710, 35.6582, -50.5775



0.9290, 1.0210, -0.8147

Previews

White Background



This preview shows how the YUV color 110.0490, -14.3212, 20.1280 looks on a white background.

Color Contrast Check

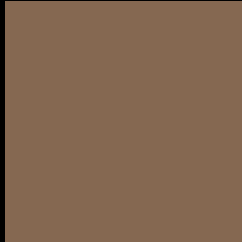
Large Text (above 18pt) WCAG AA ✓ Pass

Any Text WCAG AA ✓ Pass

Large Text (above 18pt) WCAG AAA ✓ Pass

Any Text WCAG AAA × Fail

Black Background



This preview shows how the YUV color 110.0490, -14.3212, 20.1280 looks on a black background.

Color Contrast Check

Large Text (above 18pt) WCAG AA ✓ Pass

Any Text WCAG AA × Fail

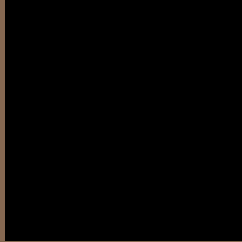
Large Text (above 18pt) WCAG AAA × Fail

Any Text WCAG AAA × Fail

If you want to check with other color combinations, try the [Color Contrast Checker](#).

YUV 110.0490, -14.3212, 20.1280

Background



This preview shows how black text looks on a background with the YUV color 110.0490, -14.3212, 20.1280.



This preview shows how white text looks on a background with the YUV color 110.0490, -14.3212, 20.1280.

Color Blindness Simulation

Color vision deficiency is a very complex topic, and I could not describe the different causes any better than Wikipedia does, so if you want to learn more, you should check out their [article about color blindness](#).

Dichromacy



Original Color

110.0490, -14.3212, 20.1280

Protanopia

109.1290, -12.3886, 6.9029

Deuteranopia

109.7390, -14.1683, 17.7689



Tritanopia

111.6760, -1.8123, 21.3321

Trichromacy



Original Color

110.0490, -14.3212, 20.1280

Protanomaly

109.6350, -13.1311, 11.7211

Deuteranomaly

110.0380, -14.3157, 18.3837

Tritanomaly

110.8240, -6.3222, 21.2024

Monochromacy



Original Color

110.0490, -14.3212, 20.1280

Achromatopsia

110.0000, 0.0000, 0.0000

Achromatomaly

109.9640, -5.4053, 7.0476

CSS Examples

Text

The CSS property to change the color of the text to YUV 110.0490, -14.3212, 20.1280 is called "color". The color property can be set on classes, ids or directly on the HTML element.

This example shows how text in the color `rgb(133, 104, 81)` looks like.

```
.text, #text, p{  
    color:rgb(133, 104, 81)  
}
```

If you want to add a text shadow in that color use the text-shadow property, you can generate a text shadow directly with our [CSS Text Shadow Generator](#).

Here you see how black text with a 4 pixel rgb(133, 104, 81) colored shadow looks like.

```
.shadow{ text-shadow: 4px 4px 2px rgb(133, 104, 81) }
```

Border

The CSS property to change the border of an element to YUV 110.0490, -14.3212, 20.1280 is called "border".

The border property can be set on classes, ids or directly on the HTML element.

This example shows the color as border, it can be applied via the CSS property "border" or "border-color".

```
.border, #border, table{ border:4px solid rgb(133, 104, 81) }
```


If only the border color should be changed use the property `border-color`.

```
.border{ border-color:rgb(133, 104, 81) }
```

If you want to add a box shadow in that color use:

Here you see how a box with a 4 pixel `rgb(133, 104, 81)` colored shadow looks like.

```
.boxshadow{ -moz-box-shadow:4px 4px 4px  
4px rgb(133, 104, 81); -webkit-box-  
shadow:4px 4px 4px 4px rgb(133, 104, 81);  
box-shadow:4px 4px 4px 4px rgb(133, 104,  
81) }
```

Background

The CSS property to change the background color of an element to YUV 110.0490, -14.3212, 20.1280 is called "background". The background property can be set on classes, ids or directly on the HTML element.

```
.background, #background, body{  
background: rgb(133, 104, 81) }
```

If only the background color should be changed can be used:

```
.background{ background-color: rgb(133,  
104, 81) }
```

This example shows the color as background, it is applied via the CSS property "background".

To optimize and compress your CSS code, you can use our [online CSS compressor and optimizer](#) based on csstidy. If you want to create a linear or radial gradient as background or border, check our [CSS Gradient Generator](#).

Hey! You found this booklet interesting? Support Converting Colors with the new Membership Option!

The pro membership hides all ads, plus gives you double the colors in the color bucket, and more awesome pro features!

[Learn more, Memberships starting at \\$2.50/m!](#)

**Follow me
on Twitter!**

@ConvertingColor