

Converting Colors

YUV(110.6810, 8.0453,
126.5678)

Have a look what the booklet for
YUV(110.6810, 8.0453, 126.5678)
contains.

YUV(110.6810, 8.0453, 126.5678)	3
<i>Conversions</i>	4
<i>Details</i>	6
<i>Harmonies</i>	12
<i>Previews</i>	24
<i>Color Blindness Simulation</i>	28
<i>CSS Examples</i>	31

Color

**YUV(110.6810, 8.0453,
126.5678)**

Conversions

Conversions Part 1

Format	Color
Hex	FF227F
RGB	255, 34, 127
RGB Percent	100%, 13%, 50%
CMY	0.0000, 0.8667, 0.5020
CMYK	0.00, 0.87, 0.50, 0.00
HSL	335°, 100%, 57%
HSV	335°, 87%, 100%
XYZ	45.6428, 23.9364, 22.2932
YIQ	110.6810, 101.8630, 75.7750

Conversions

Conversions Part 2

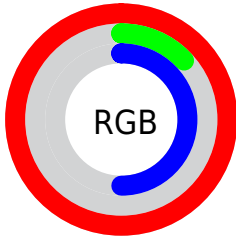
Format	Color
R_{YB}	255, 34, 127
Decimal	16720511
CIE _{Lab}	56.02, 81.10, 6.30
CIE _{LCh}	56, 81.341, 4.443
Yxy	23.9364, 0.4968, 0.2605
Android (android.graphics.Color)	4294910591 (0xFFFF227F)
YUV	110.6810, 8.0453, 126.5678
Hunter-Lab	48.9248, 80.9073, 7.2311

Details

The YUV color **110.6810, 8.0453, 126.5678** is a dark color, and the websafe version is hex **FF3399**. The color can be described as middle washed rose. A complement of this color would be **178.3190, -8.0453, -126.5678**, and the grayscale version is **111.0000, 0.0000, 0.0000**.

A 20% lighter version of the original color is **160.6340, 9.0544, 82.7590**, and **66.0010, 5.9155, 109.6241** is the 20% darker color. If you saturate the color by 10%, you get **93.7090, 9.0175, 141.4522**, and if you desaturate by 10%, it is **127.0660, 7.3625, 112.1981**.

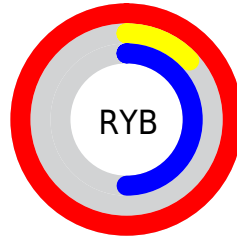
Distribution



Red (100%)

Green (13%)

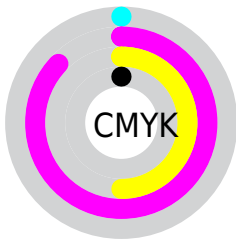
Blue (50%)



Red (100%)

Yellow (13%)

Blue (50%)

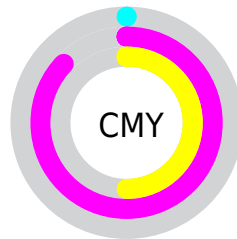


Cyan (0%)

Magenta (87%)

Yellow (50%)

Black (0%)



Cyan (0%)

Magenta (87%)

Yellow (50%)

Brightness & Saturation Gradients

These gradients show how the YUV color 110.6810, 8.0453, 126.5678 changes by changing the brightness by 10 percent. The first figure shows a shift by +10% for each color and the second figure -10%.

Similar to the brightness gradients but the following saturation gradients show a change of the YUV color 110.6810, 8.0453, 126.5678 by changing the saturation by 10% instead.

110.6810, 8.0453,
126.5678

110.6810, 8.0453,
126.5678

255.0000, 0.0000,
0.0000

78.3050, 11.6816,
126.8975

160.6340, 9.0544,
82.7590

66.0010, 5.9155,
109.6241

182.0230, 12.3137,
64.0008

54.2240, 0.8756,
92.7656

203.4120, 15.5729,
45.2427

42.5610, -3.7276,
75.8070

223.3020, 15.6271,
27.7991

30.7840, -8.7675,
58.9484

240.9120, 6.9454,
12.3552

20.6740, -8.7133,
41.5049

10.5790, -4.7224,

21.4172

■ 0.0000, 0.0000,
0.0000

■ 110.6810, 8.0453,
126.5678

■ 110.6810, 8.0453,
126.5678

■ 93.7090, 9.0175,
141.4522

■ 127.0660, 7.3625,
112.1981

■ 88.4430, 9.1486,
146.0705

■ 144.0380, 6.3903,
97.3137

■ 160.3090, 5.2707,
83.0440

■ 177.2810, 4.2985,
68.1596

■ 194.2530, 3.3263,
53.2751

■ 210.6380, 2.6435,
38.9055

■ 226.9090, 1.5239,
24.6358

■ 243.8810, 0.5517,
9.7514

■ 255.0000, 0.0000,
0.0000

Harmonies

Analogous

The Analogous color harmony consists of three colors that are next to each other on the color wheel.



128.4750, 33.7828, 84.6524



110.6810, 8.0453, 126.5678



118.9080, -30.0276, 111.4597

Triad

The Triadic color harmony groups three colors that are evenly spaced from another and form a triangle on the color wheel.



110.6810, 8.0453, 126.5678



112.2470, -55.3378, -30.9116



121.2290, 65.9491, -106.3178

Complementary

The Complementary color scheme is a pair of colors which are on the opposite of each other on the color wheel.



110.6810, 8.0453, 126.5678



178.3190, -8.0453, -126.5678

Split Complementary

Split-complementary colors differ from the complementary color scheme. The scheme consists of three colors, the original color and two neighbors of the complement color.



120.5500, 45.5778, -105.7223



110.6810, 8.0453, 126.5678



102.2590, -16.8897, -89.6811

Square

The Square scheme is like the rectangle color scheme, but the four colors are evenly spaced on the color wheel.



110.6810, 8.0453, 126.5678



124.9920, -61.6211, 24.5630



112.5700, 15.0020, -98.7239



111.2500, 70.8688, -97.5662

Rectangle

The Rectangle color scheme consists of four colors that form a rectangle on the color wheel.



110.6810, 8.0453, 126.5678



122.1540, -60.2219, 89.3189



112.5700, 15.0020, -98.7239



122.3060, 62.4601, -107.2624

Sweetspot

The Sweet Spot groups the original color and five complimentary colors.



110.6810, 8.0453, 126.5678



211.9260, 2.5015, 37.7759



96.5690, 78.1065, 54.7520



101.8980, 1.5293, 22.8915



0.0000, 0.0000, 0.0000



128.0000, 0.0000, 0.0000

Same Dimension

The Same Dimension uses a secret algorithm to generate beautiful new colors.



110.6810, 8.0453, 126.5678



88.4430, 9.1486, 146.0705



108.8840, -36.9178, 128.1437



119.4570, 0.2677, 7.4922



66.2290, 6.7891, 109.4242



22.2140, 2.3595, 36.6463

Inverse Universe

The Inverse Universe completely reimagines the original color for something new.



110.6810, 8.0453, 126.5678



88.4430, 9.1486, 146.0705



180.1160, 36.9178, -128.1437



119.4570, 0.2677, 7.4922



66.2290, 6.7891, 109.4242



22.2140, 2.3595, 36.6463

Previews

White Background



This preview shows how the YUV color 110.6810, 8.0453, 126.5678 looks on a white background.

Color Contrast Check

Large Text (above 18pt) WCAG AA ✓ Pass

Any Text WCAG AA × Fail

Large Text (above 18pt) WCAG AAA × Fail

Any Text WCAG AAA × Fail

Black Background



This preview shows how the YUV color 110.6810, 8.0453, 126.5678 looks on a black background.

Color Contrast Check

Large Text (above 18pt) WCAG AA ✓ Pass

Any Text WCAG AA ✓ Pass

Large Text (above 18pt) WCAG AAA ✓ Pass

Any Text WCAG AAA × Fail

If you want to check with other color combinations, try the [Color Contrast Checker](#).

YUV 110.6810, 8.0453, 126.5678

Background



This preview shows how black text looks on a background with the YUV color 110.6810, 8.0453, 126.5678.



This preview shows how white text looks on a background with the YUV color 110.6810, 8.0453,

Color Blindness Simulation

Color vision deficiency is a very complex topic, and I could not describe the different causes any better than Wikipedia does, so if you want to learn more, you should check out their [article about color blindness](#).

Dichromacy



Original Color

110.6810, 8.0453, 126.5678

Protanopia

134.9550, 21.7142, -11.3615

Deuteranopia

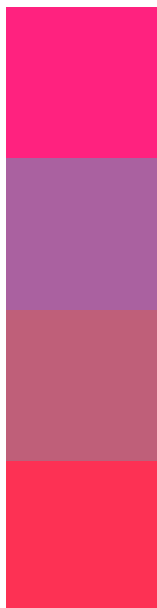
135.6940, -9.2161, 16.0544



Tritanopia

116.1200, -28.1602, 119.1668

Trichromacy



Original Color

110.6810, 8.0453, 126.5678

Protanomaly

126.0090, 16.7576, 38.5801

Deuteranomaly

126.6680, -2.7943, 56.4192

Tritanomaly

113.9860, -14.7831, 121.9153

Monochromacy



Original Color

110.6810, 8.0453, 126.5678

Achromatopsia

111.0000, 0.0000, 0.0000

Achromatomaly

110.7960, 3.0586, 45.7829

CSS Examples

Text

The CSS property to change the color of the text to YUV 110.6810, 8.0453, 126.5678 is called "color". The color property can be set on classes, ids or directly on the HTML element.

This example shows how text in the color `rgb(255, 34, 127)` looks like.

```
.text, #text, p{  
  color:rgb(255, 34, 127)  
}
```

If you want to add a text shadow in that color use the text-shadow property, you can generate a text shadow directly with our [CSS Text Shadow Generator](#).

Here you see how black text with a 4 pixel rgb(255, 34, 127) colored shadow looks like.

```
.shadow{ text-shadow: 4px 4px 2px rgb(255, 34, 127) }
```

Border

The CSS property to change the border of an element to YUV 110.6810, 8.0453, 126.5678 is called "border". The border property can be set on classes, ids or directly on the HTML element.

This example shows the color as border, it can be applied via the CSS property "border" or "border-color".

```
.border, #border, table{ border:4px solid rgb(255, 34, 127) }
```


If only the border color should be changed use the property `border-color`.

```
.border{ border-color:rgb(255, 34, 127) }
```

If you want to add a box shadow in that color use:

Here you see how a box with a 4 pixel `rgb(255, 34, 127)` colored shadow looks like.

```
.boxshadow{ -moz-box-shadow:4px 4px 4px  
4px rgb(255, 34, 127); -webkit-box-  
shadow:4px 4px 4px 4px rgb(255, 34, 127);  
box-shadow:4px 4px 4px 4px rgb(255, 34,  
127) }
```

Background

The CSS property to change the background color of an element to YUV 110.6810, 8.0453, 126.5678 is called "background". The background property can be set on classes, ids or directly on the HTML element.

```
.background, #background, body{  
background: rgb(255, 34, 127) }
```

If only the background color should be changed can be used:

```
.background{ background-color: rgb(255, 34,  
127) }
```

This example shows the color as background, it is applied via the CSS property "background".

To optimize and compress your CSS code, you can use our [online CSS compressor and optimizer](#) based on csstidy. If you want to create a linear or radial gradient as background or border, check our [CSS Gradient Generator](#).

Hey! You found this booklet interesting? Support Converting Colors with the new Membership Option!

The pro membership hides all ads, plus gives you double the colors in the color bucket, and more awesome pro features!

[Learn more, Memberships starting at \\$2.50/m!](#)

**Follow me
on Twitter!**

@ConvertingColor