

Converting Colors

YUV(111.9700, -3.9292,
93.8653)

Have a look what the booklet for
YUV(111.9700, -3.9292, 93.8653)
contains.

YUV(111.9700, -3.9292, 93.8653)	3
<i>Conversions</i>	4
<i>Details</i>	6
<i>Harmonies</i>	12
<i>Previews</i>	24
<i>Color Blindness Simulation</i>	28
<i>CSS Examples</i>	31

Color

**YUV(111.9700, -3.9292,
93.8653)**

Conversions

Conversions Part 1

Format	Color
Hex	DB3B68
RGB	219, 59, 104
RGB Percent	86%, 23%, 41%
CMY	0.1412, 0.7686, 0.5922
CMYK	0.00, 0.73, 0.53, 0.14
HSL	343°, 69%, 55%
HSV	343°, 73%, 86%
XYZ	33.2761, 19.1875, 15.0464
YIQ	111.9700, 80.9150, 47.9150

Conversions

Conversions Part 2

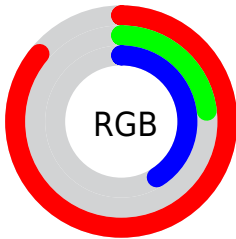
Format	Color
R_{YB}	219, 59, 104
Decimal	14367592
CIE _{Lab}	50.91, 64.01, 11.95
CIE _{LCh}	51, 65.118, 10.579
Yxy	19.1875, 0.4929, 0.2842
Android (android.graphics.Color)	4292557672 (0xFFDB3B68)
YUV	111.9700, -3.9292, 93.8653
Hunter-Lab	43.8035, 58.9444, 10.2965

Details

The YUV color **111.9700, -3.9292, 93.8653** is a dark color, and the websafe version is hex **CC3366**. The color can be described as dark muted rose. A complement of this color would be **166.0300, 3.9292, -93.8653**, and the grayscale version is **112.0000, 0.0000, 0.0000**.

A 20% lighter version of the original color is **163.1810, -4.0332, 80.5253**, and **53.7400, 1.6072, 91.4360** is the 20% darker color. If you saturate the color by 10%, you get **97.2320, -4.5514, 106.7905**, and if you desaturate by 10%, it is **126.7080, -3.3070, 80.9401**.

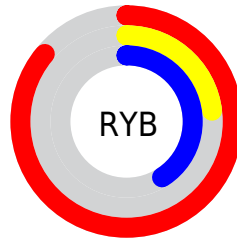
Distribution



Red (86%)

Green (23%)

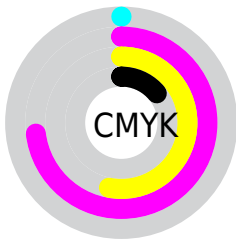
Blue (41%)



Red (86%)

Yellow (23%)

Blue (41%)

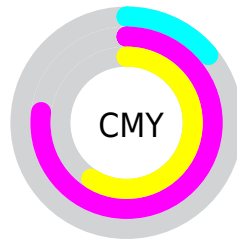


Cyan (0%)

Magenta (73%)

Yellow (53%)

Black (14%)



Cyan (14%)

Magenta (77%)

Yellow (59%)

Brightness & Saturation Gradients

These gradients show how the YUV color 111.9700, -3.9292, 93.8653 changes by changing the brightness by 10 percent. The first figure shows a shift by +10% for each color and the second figure -10%.

Similar to the brightness gradients but the following saturation gradients show a change of the YUV color 111.9700, -3.9292, 93.8653 by changing the saturation by 10% instead.

■ 111.9700, -3.9292,
93.8653

■ 111.9700, -3.9292,
93.8653

255.0000, 0.0000,
0.0000

■ 77.0720, 1.4435,
97.2839

■ 163.1810, -4.0332,
80.5253

■ 53.7400, 1.6072,
91.4360

■ 183.2820, -0.6320,
62.8967

■ 42.3760, -3.1434,
75.0922

■ 203.3830, 2.7692,
45.2681

■ 31.1260, -7.4571,
58.6485

■ 223.5980, 6.6072,
27.5396

■ 21.2720, -9.0081,
42.7345

■ 242.6730, 6.0772,
10.8108

■ 11.4760, -5.1647,
23.2615

■ 0.0000, 0.0000,

0.0000

■ 111.9700, -3.9292,
93.8653

■ 111.9700, -3.9292,
93.8653

■ 97.2320, -4.5514,
106.7905

■ 126.7080, -3.3070,
80.9401

■ 82.6080, -4.7367,
119.6158

■ 141.3320, -3.1217,
68.1148

■ 72.5490, -5.2007,
128.4375

■ 156.0700, -2.4995,
55.1896

■ 170.8080, -1.8773,
42.2644

■ 184.9590, -0.9658,
29.8540

■ 199.5830, -0.7804,
17.0287

■ 214.3210, -0.1583,
4.1035

■ 229.0590, 0.4639,
-8.8217

■ 243.2100, 1.3755,
-21.2322

Harmonies

Analogous

The Analogous color harmony consists of three colors that are next to each other on the color wheel.



118.7280, 19.8541, 72.1525



111.9700, -3.9292, 93.8653



114.3790, -31.2458, 82.1056

Triad

The Triadic color harmony groups three colors that are evenly spaced from another and form a triangle on the color wheel.



111.9700, -3.9292, 93.8653



102.4760, -39.1817, -32.8665



106.1830, 59.0698, -93.1225

Complementary

The Complementary color scheme is a pair of colors which are on the opposite of each other on the color wheel.



111.9700, -3.9292, 93.8653



166.0300, 3.9292, -93.8653

Split Complementary

Split-complementary colors differ from the complementary color scheme. The scheme consists of three colors, the original color and two neighbors of the complement color.



107.1170, 42.3403, -93.9416



111.9700, -3.9292, 93.8653



93.8760, -5.8549, -82.3293

Square

The Square scheme is like the rectangle color scheme, but the four colors are evenly spaced on the color wheel.



111.9700, -3.9292, 93.8653



111.6470, -55.0420, 14.3416



101.6620, 18.9006, -89.1576



97.9480, 65.5946, -85.9004

Rectangle

The Rectangle color scheme consists of four colors that form a rectangle on the color wheel.



111.9700, -3.9292, 93.8653



114.5190, -50.5419, 64.4428



101.6620, 18.9006, -89.1576



107.6190, 54.4178, -94.3819

Sweetspot

The Sweet Spot groups the original color and five complimentary colors.



111.9700, -3.9292, 93.8653



217.5680, -1.2660, 32.8279



111.6250, 52.9359, 54.7029



105.3060, -0.6439, 19.9026



0.0000, 0.0000, 0.0000



128.0000, 0.0000, 0.0000

Same Dimension

The Same Dimension uses a secret algorithm to generate beautiful new colors.



111.9700, -3.9292, 93.8653



105.1580, -5.5009, 131.4114



127.3850, -33.7138, 80.3464



102.6310, -0.3111, 6.4626



57.3130, -4.0983, 101.4575



15.2360, -1.1023, 26.9800

Inverse Universe

The Inverse Universe completely reimagines the original color for something new.



111.9700, -3.9292, 93.8653



105.1580, -5.5009, 131.4114



150.6150, 33.7138, -80.3464



102.6310, -0.3111, 6.4626



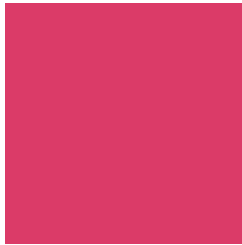
57.3130, -4.0983, 101.4575



15.2360, -1.1023, 26.9800

Previews

White Background



This preview shows how the YUV color 111.9700, -3.9292, 93.8653 looks on a white background.

Color Contrast Check

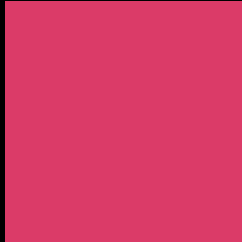
Large Text (above 18pt) WCAG AA ✓ Pass

Any Text WCAG AA × Fail

Large Text (above 18pt) WCAG AAA × Fail

Any Text WCAG AAA × Fail

Black Background



This preview shows how the YUV color 111.9700, -3.9292, 93.8653 looks on a black background.

Color Contrast Check

Large Text (above 18pt) WCAG AA ✓ Pass

Any Text WCAG AA ✓ Pass

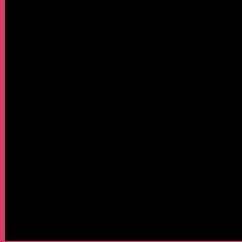
Large Text (above 18pt) WCAG AAA ✓ Pass

Any Text WCAG AAA × Fail

If you want to check with other color combinations, try the [Color Contrast Checker](#).

YUV 111.9700, -3.9292, 93.8653

Background



This preview shows how black text looks on a background with the YUV color 111.9700, -3.9292, 93.8653.



This preview shows how white text looks on a background with the YUV color 111.9700, -3.9292,

Color Blindness Simulation

Color vision deficiency is a very complex topic, and I could not describe the different causes any better than Wikipedia does, so if you want to learn more, you should check out their [article about color blindness](#).

Dichromacy



Original Color

111.9700, -3.9292, 93.8653

Protanopia

122.4110, 6.6994, -2.1144

Deuteranopia

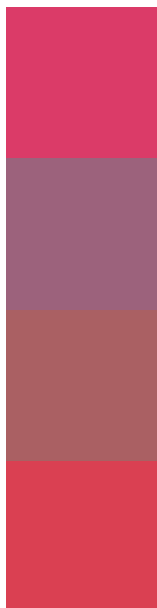
122.0810, -12.8579, 17.4690



Tritanopia

112.1920, -20.8007, 91.9166

Trichromacy



Original Color

111.9700, -3.9292, 93.8653

Protanomaly

118.3060, 2.8071, 33.0576

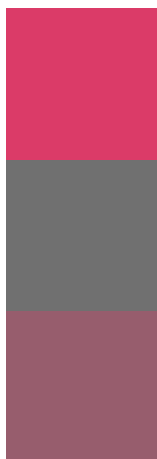
Deuteranomaly

118.4680, -9.5977, 45.1936

Tritanomaly

112.0980, -14.8383, 92.8761

Monochromacy



Original Color

111.9700, -3.9292, 93.8653

Achromatopsia

112.0000, 0.0000, 0.0000

Achromatomaly

112.1660, -1.5608, 34.0574

CSS Examples

Text

The CSS property to change the color of the text to YUV 111.9700, -3.9292, 93.8653 is called "color". The color property can be set on classes, ids or directly on the HTML element.

This example shows how text in the color `rgb(219, 59, 104)` looks like.

```
.text, #text, p{  
    color:rgb(219, 59, 104)  
}
```

If you want to add a text shadow in that color use the text-shadow property, you can generate a text shadow directly with our [CSS Text Shadow Generator](#).

Here you see how black text with a 4 pixel rgb(219, 59, 104) colored shadow looks like.

```
.shadow{ text-shadow: 4px 4px 2px rgb(219, 59, 104) }
```

Border

The CSS property to change the border of an element to YUV 111.9700, -3.9292, 93.8653 is called "border". The border property can be set on classes, ids or directly on the HTML element.

This example shows the color as border, it can be applied via the CSS property "border" or "border-color".

```
.border, #border, table{ border:4px solid rgb(219, 59, 104) }
```


If only the border color should be changed use the property `border-color`.

```
.border{ border-color:rgb(219, 59, 104) }
```

If you want to add a box shadow in that color use:

Here you see how a box with a 4 pixel `rgb(219, 59, 104)` colored shadow looks like.

```
.boxshadow{ -moz-box-shadow:4px 4px 4px 4px rgb(219, 59, 104); -webkit-box-shadow:4px 4px 4px 4px rgb(219, 59, 104); box-shadow:4px 4px 4px 4px rgb(219, 59, 104) }
```

Background

The CSS property to change the background color of an element to YUV 111.9700, -3.9292, 93.8653 is called "background". The background property can be set on classes, ids or directly on the HTML element.

```
.background, #background, body{  
background: rgb(219, 59, 104) }
```

If only the background color should be changed can be used:

```
.background{ background-color: rgb(219, 59,  
104) }
```

This example shows the color as background, it is applied via the CSS property "background".

To optimize and compress your CSS code, you can use our [online CSS compressor and optimizer](#) based on csstidy. If you want to create a linear or radial gradient as background or border, check our [CSS Gradient Generator](#).

Hey! You found this booklet interesting? Support Converting Colors with the new Membership Option!

The pro membership hides all ads, plus gives you double the colors in the color bucket, and more awesome pro features!

[Learn more, Memberships starting at \\$2.50/m!](#)

**Follow me
on Twitter!**

@ConvertingColor